

Sunny and mild before plummeting temperatures in afternoon



1800 m

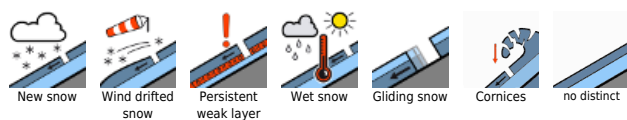
Ennstaler Alpen, Totes Gebirge, Dachsteingebiet, Schladminger Tauern Nord, Nördliche Wölzer Tauern, Rottenmanner Tauern, Eisenerzer Alpen, Hochschwabgebiet



Seetaler Alpen, Stub- und Gleinalpe, Koralpe, Gurktaler Alpen, Schladminger Tauern Süd, Südliche Wölzer Tauern, Gaaler Alpen, Triebener Tauern, Mürzsteiger Alpen



Avalanche problems



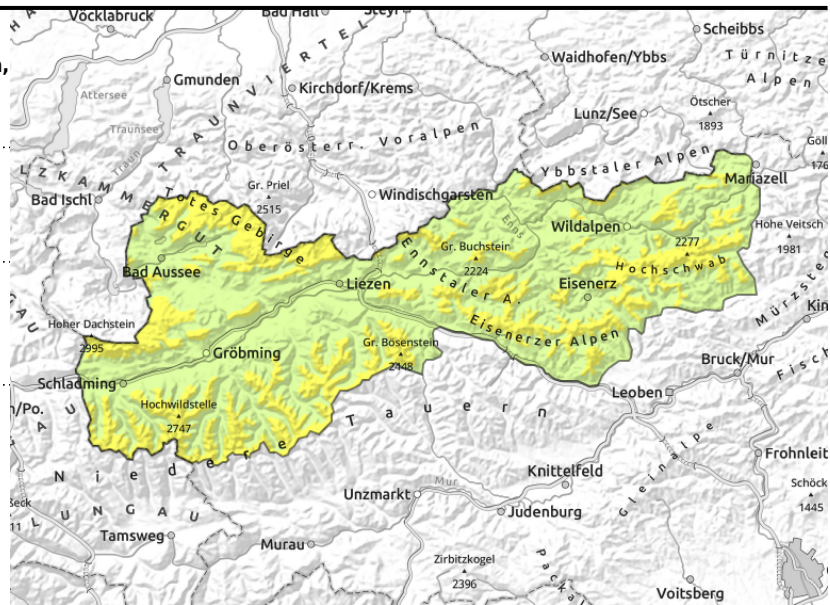
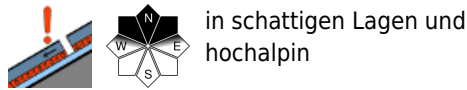
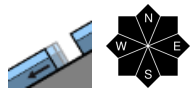
Danger ratings



Expositions



Ennstaler Alpen, Totes Gebirge, Dachsteingebiet, Schladminger Tauern Nord, Nördliche Wölzer Tauern, Rottenmanner Tauern, Eisenerzer Alpen, Hochschwabgebiet



Moderate avalanche danger at high altitudes - on north-facing slopes trigger-prone snowpack, on south-facing slopes naturally triggered wet-snow avalanches

Avalanche danger above 1800 m is moderate. Main danger: natureally triggered glide-snow and wet-snow avalanches from steep slopes in all aspects which have not yet discharged, and can reach medium size. Avoid zones below glide cracks and opening shooting cracks, esp. in regions where snowfall has been heavy the likelihood of wet loose-snow avalanches in steep rocky south-facing terrain is high. On steep north-facing slopes above 2000 m, slab avalanches can be triggered by 1 person.

Snowpack structure

The snowpack fundament is isotherm up to high altitudes and is losing firmness. The melt-freeze encrusted snowpack surface will soften quickly on sunny slopes by midday. The snowpack is bare up to intermediate altitudes. On shady slopes above 2000 m there are faceted crystals inside the snowpack which can serve as a weak layer for a slab avalanche - triggerable by 1 person is possible.

Weather

On Saturday it will remain dry until midday, and quite sunny, accompanied by brisk SW winds, but mild. In afternoon, a marked cold front from the northwest will move in, bringing stormy NW winds, heavy showers and plummeting temperatures at all altitudes. In the evening in the Northern Alps snowfall is possible down to below 1000 m. At 2000 m: +5 degrees at midday, in evening only -5 degrees; at 1500 m: -1 degree.

Outlook

On Palm Sunday, cold and instable weather conditions. Some sunshine and some snow or graupel showers, with reduced visibility. Snowfall level will rise to 1000 m. All in all by Sunday evening in Upper Styria, up to 15 cm of fresh snow is expected. Inmoring, a moderate, increasingly brisk NW wind will be blowing and it will remain cold. The fresh snowdrifts are prone to triggering, raising avalanche danger levels temporarily.

Avalanche problems



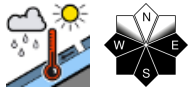
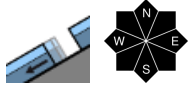
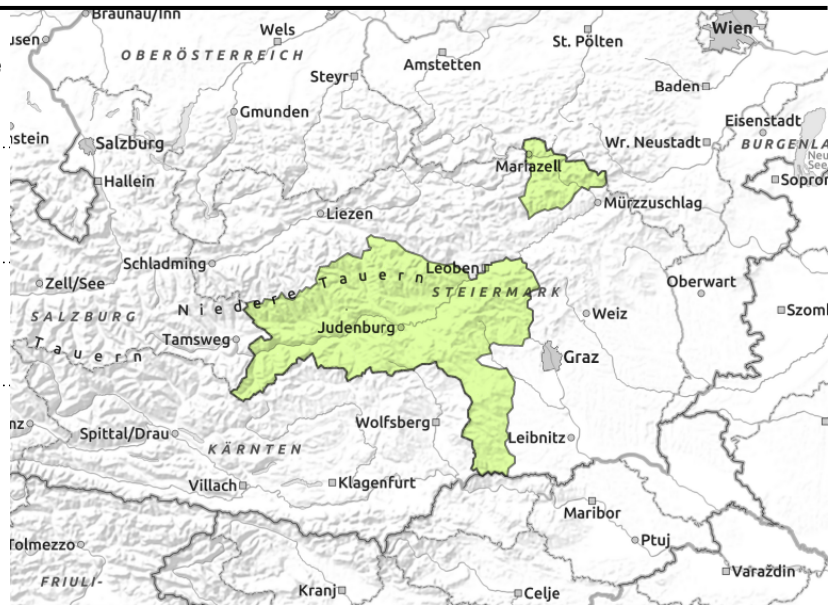
Danger ratings



Expositions



Seetaler Alpen, Stub- und Gleinalpe, Koralpe, Gurktaler Alpen, Schladminger Tauern Süd, Südliche Wölzer Tauern, Gaaler Alpen, Triebener Tauern, Mürzsteiger Alpen



Low avalanche danger - naturally triggered wet-snow/glide-snow avalanches possible

Avalanche danger is low, but avalanches cannot be excluded from starting zones which have not yet discharged (esp. grass-covered steep terrain in all aspects) and glide-snow avalanches are still possible. Avoid the danger zones: indicated by glide cracks. Wet loose-snow avalanches can trigger naturally in steep rocky terrain.

Snowpack structure

The snowpack fundament is isotherm up to high altitudes and is losing firmness. The melt-freeze encrusted snowpack surface will soften quickly on sunny slopes by midday. The snowpack is bare up to intermediate altitudes.

Weather

On Saturday it will remain dry until midday, and quite sunny, accompanied by brisk SW winds, but mild. In afternoon, a marked cold front from the northwest will move in, bringing stormy NW winds, heavy showers and plummeting temperatures at all altitudes. In the evening in the Northern Alps snowfall is possible down to below 1000 m. At 2000 m: +5 degrees at midday, in evening only -5 degrees; at 1500 m: -1 degree.

Outlook

On Palm Sunday, cold and instable weather conditions. Some sunshine and some snow or graupel showers, with reduced visibility. Snowfall level will rise to 1000 m. All in all by Sunday evening in Upper Styria, up to 15 cm of fresh snow is expected. In morning, a moderate, increasingly brisk NW wind will be blowing and it will remain cold. The fresh snowdrifts are prone to triggering, raising avalanche danger levels temporarily.

Translated by Jeffrey McCabe, www.creativtrans.com

Avalanche problems



Danger ratings



Expositions

