

Interim high-pressure front improving weather conditions



Mürzsteiger Alpen, Hochschwabgebiet, Ennstaler Alpen, Totes Gebirge, Dachsteingebiet, Schladminger Tauern Nord, Nördliche Wölzer Tauern, Schladminger Tauern Süd, Südliche Wölzer Tauern, Rottenmanner Tauern, Triebener Tauern, Eisenerzer Alpen, Gaaler Alpen, Gurktaler Alpen



Seetaler Alpen, Stub- und Gleinalpe, Koralpe



Avalanche problems



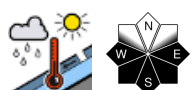
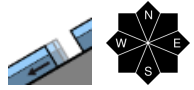
Danger ratings



Expositions



Mürzsteiger Alpen, Hochschwabgebiet, Ennstaler Alpen, Totes Gebirge, Dachsteingebiet, Schladminger Tauern Nord, Nördliche Wölzer Tauern, Schladminger Tauern Süd, Südliche Wölzer Tauern, Rottenmanner Tauern, Triebener Tauern, Eisenerzer Alpen, Gaaler Alpen, Gurktaler Alpen



Danger of glide-snow/wet-snow avalanches dominates at high altitude

Avalanche danger at high altitude is still moderate, avalanches cannot be excluded from starting zones which have not yet discharged (esp. grass-covered steep terrain in all aspects) and glide-snow avalanches are still possible. Avoid the danger zones: indicated by glide cracks. On steep sunny slopes the loss of firmness is increasing. Loose-snow avalanches in steep rocky terrain can trigger naturally, esp. where recent snowfall has been heaviest between Dachstein and Totes Gebirge.

Snowpack structure

Due to solar radiation and warmth on Wednesday and rainfall on Thursday, the snowpack surface has become quite moist. Also the fundament is generally isotherm, thus losing its firmness increasingly. At night the temperatures drop, at high altitudes a melt-freeze crust forms, then softens in the morning, and re-forms again.

Weather

High-pressure front conditions are increasing. On Friday, initially lots of clouds, peaks in fog, minor snowfall possible. Slowly sunshine will prevail, later in the northeast. Winds westerly and moderate. At 2000 m: +1 to +3 degrees

On Saturday, sunny and dry until midday, the SW winds will be brisk. Mild. A marked cold front will arrive in afternoon bringing storm-strength NW winds, heavy showers and plummeting temperatures at all altitudes. In the evening, snowfall in the Northern Alps down to 1000 m.

On Saturday night and during the day on Palm Sunday, snowfall throughout Styria with stormy winds. At 2000 m: -7 degrees.

Outlook

To begin with, no change in avalanche danger levels

Avalanche problems



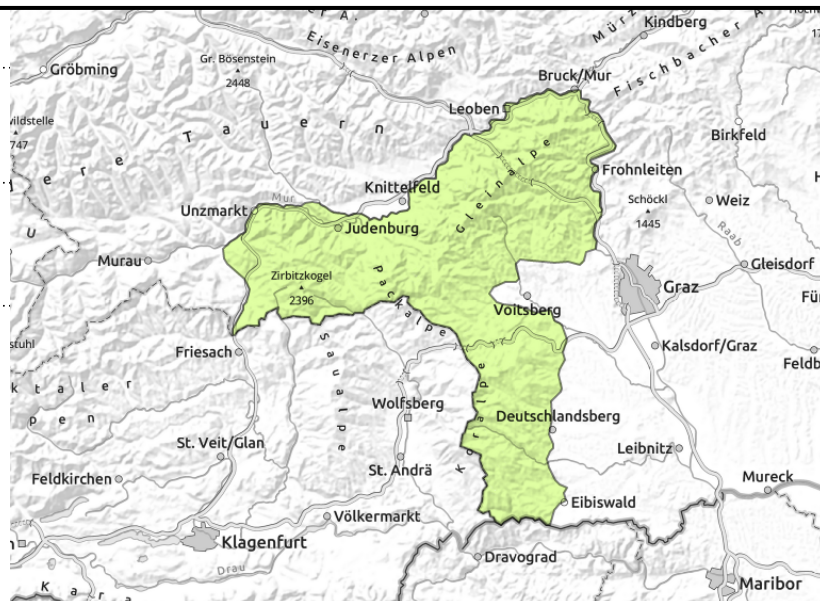
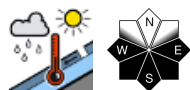
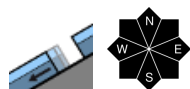
Danger ratings



Expositions



Seetaler Alpen, Stub- und Gleinalpe, Koralpe



Low avalanche danger - only few danger zones in outlying terrain

Avalanche danger is low, but avalanches cannot be excluded from starting zones which have not yet discharged (esp. grass-covered steep terrain in all aspects) and glide-snow avalanches are still possible. Avoid the danger zones: indicated by glide cracks. On steep sunny slopes the loss of firmness is increasing. Loose-snow avalanches in steep rocky terrain can trigger naturally.

Snowpack structure

Due to solar radiation and warmth on Wednesday, the snowpack surface has become quite moist. Also the fundament is generally isotherm, thus losing its firmness increasingly. At night the temperatures drop, at high altitudes a melt-freeze crust forms, then softens in the morning, and reforms again.

Weather

High-pressure front conditions are increasing. On Friday, initially lots of clouds, peaks in fog, minor snowfall possible. Slowly sunshine will prevail, later in the northeast. Winds westerly and moderate. At 2000 m: +1 to +3 degrees

On Saturday, sunny and dry until midday, the SW winds will be brisk. Mild. A marked cold front will arrive in afternoon bringing storm-strength NW winds, heavy showers and plummeting temperatures at all altitudes. In the evening, snowfall in the Northern Alps down to 1000 m.

On Saturday night and during the day on Palm Sunday, snowfall throughout Styria with stormy winds. At 2000 m: -7 degrees.

Outlook

To begin with, no change in avalanche danger levels

Translated by Jeffrey McCabe, www.creativtrans.com

Avalanche problems



Danger ratings



Expositions

