

Decreasing impact of high-pressure front. Perturbances from the west.



2200 m

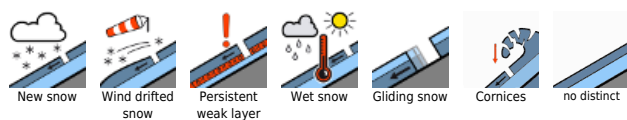
Mürztoger Alpen, Hochschwabgebiet, Ennstaler Alpen, Totes Gebirge, Dachsteingebiet, Schladminger Tauern Nord, Nördliche Wölzer Tauern, Schladminger Tauern Süd, Südliche Wölzer Tauern, Rottenmanner Tauern, Triebener Tauern, Eisenerzer Alpen, Gaaler Alpen, Gurktaler Alpen



Seetaler Alpen, Stub- und Gleinalpe, Koralpe



Avalanche problems



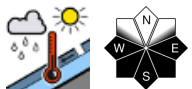
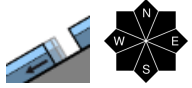
Danger ratings



Expositions



Mürzsteiger Alpen, Hochschwabgebiet, Ennstaler Alpen, Totes Gebirge, Dachsteingebiet, Schladminger Tauern Nord, Nördliche Wölzer Tauern, Schladminger Tauern Süd, Südliche Wölzer Tauern, Rottenmanner Tauern, Triebener Tauern, Eisenerzer Alpen, Gaaler Alpen, Gurktaler Alpen



Danger of glide-snow/wet-snow avalanches predominant at high altitude

Avalanche danger at high altitude is still moderate, avalanches cannot be excluded from starting zones which have not yet discharged (esp. grass-covered steep terrain in all aspects) and glide-snow avalanches are still possible. Avoid the danger zones: indicated by glide cracks. On steep sunny slopes the loss of firmness is increasing. Loose-snow avalanches in steep rocky terrain can trigger naturally, esp. where recent snowfall has been heaviest between Dachstein and Totes Gebirge.

Snowpack structure

Due to solar radiation and warmth on Wednesday, the snowpack surface has become quite moist. Also the fundament is generally isotherm, thus losing its firmness increasingly. At night the temperatures drop, at high altitudes a melt-freeze crust forms, then softens in the morning, and reforms again.

Weather

High-pressure front conditions are coming to an end. On Wednesday night a perturbation will reach our region. In early morning, still scattered clouds, then heavier cloud cover later on and a cold front. Rainfall/snowfall widespread in the afternoon, snowfall level dropping from 1800 m down to 1600 m. At 2000 m. +2 degrees; at 1500 m: +7 degrees. By evening, temperatures will drop another 3 degrees. The W/NW winds will intensify in the latter part of the day.

After renewed influence of an intermediate high on Friday, Saturday will bring a new cold front and noticeably cooler weather. On Palm Sunday, snowfall throughout the land, snowfall level at 700 m.

Outlook

To begin with, no change in avalanche danger levels

Avalanche problems



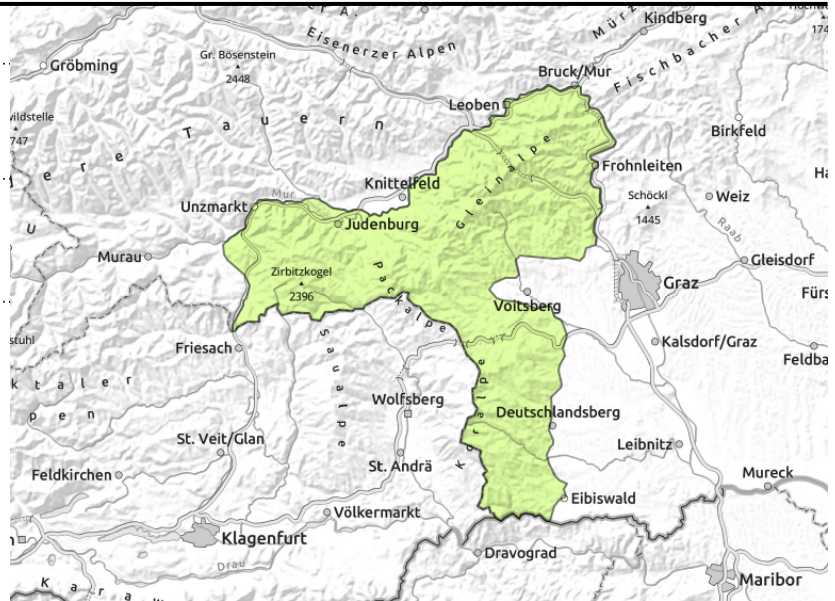
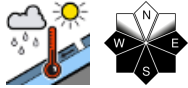
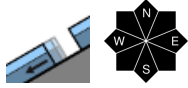
Danger ratings



Expositions



Seetaler Alpen, Stub- und Gleinalpe, Koralpe



Low avalanche danger - only few danger zones in outlying terrain

Avalanche danger is low, but avalanches cannot be excluded from starting zones which have not yet discharged (esp. grass-covered steep terrain in all aspects) and glide-snow avalanches are still possible. Avoid the danger zones: indicated by glide cracks. On steep sunny slopes the loss of firmness is increasing. Loose-snow avalanches in steep rocky terrain can trigger naturally.

Snowpack structure

Due to solar radiation and warmth on Wednesday, the snowpack surface has become quite moist. Also the fundament is generally isotherm, thus losing its firmness increasingly. At night the temperatures drop, at high altitudes a melt-freeze crust forms, then softens in the morning, and reforms again.

Weather

High-pressure front conditions are coming to an end. On Wednesday night a perturbation will reach our region. In early morning, still scattered clouds, then heavier cloud cover later on and a cold front. Rainfall/snowfall widespread in the afternoon, snowfall level dropping from 1800 m down to 1600 m. At 2000 m. +2 degrees; at 1500 m: +7 degrees. By evening, temperatures will drop another 3 degrees. The W/NW winds will intensify in the latter part of the day. After renewed influence of an intermediate high on Friday, Saturday will bring a new cold front and noticeably cooler weather. On Palm Sunday, snowfall throughout the land, snowfall level at 700 m.

Outlook

To begin with, no change in avalanche danger levels

Translated by Jeffrey McCabe, www.creativtrans.com

Avalanche problems



Danger ratings



Expositions

