

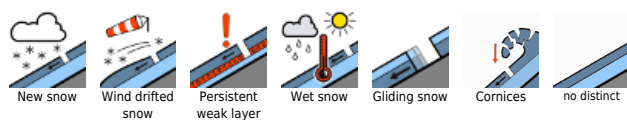
Fog and clouds in the north, in the south sunshine then convective cloud



Schladminger Tauern Süd, Südliche Wölzer Tauern, Gurktaler Alpen, Schladminger Tauern Nord, Nördliche Wölzer Tauern, Seetaler Alpen, Gaaler Alpen, Totes Gebirge, Dachsteingebiet, Ennstaler Alpen, Rottenmanner Tauern, Eisenerzer Alpen, Triebener Tauern, Hochschwabgebiet, Mürztegger Alpen, Stub- und Gleinalpe, Koralpe



Avalanche problems



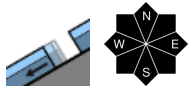
Danger ratings



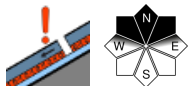
Expositions



Schladminger Tauern Süd, Südliche Wölzer Tauern, Gurktaler Alpen, Schladminger Tauern Nord, Nördliche Wölzer Tauern, Seetaler Alpen, Gaaler Alpen, Totes Gebirge, Dachsteingebiet, Ennstaler Alpen, Rottenmanner Tauern, Eisenerzer Alpen, Triebener Tauern, Hochschwabgebiet, Mürzsteger Alpen, Stub- und Gleinalpe, Koralpe



in extremely steep terrain



on shady and high-alpine slopes

Low avalanche danger. Beware wet-snow/gliding-snow activity on extremely steep slopes

Avalanche danger is low in general. Main problem: naturally triggered glide-snow and wet-snow avalanches on very steep, esp. south-facing slopes above 1900 m. Potential starting zones and glide crack zones should be avoided. In addition, on steep north-facing slopes at high altitude large additional loading can trigger a slab avalanche.

Snowpack structure

The snowpack base is stable by and large, but moist at the base, tending to glide over smooth ground. At low and intermediate altitudes there is hardly any snow on the ground. The surface is moist in all aspects, only on north-facing slopes above 2000 m are there faceted crystals which can still be triggered.

Weather

On Tuesday, two types of weather. Most of the mountains on the northern flank of the Alps will be shrouded in fog and clouds. On the southern flank of the Alps, sunshine in the morning. Starting at midday, convective cloud build-up is expected, showers can result, snowfall level at 1600 m, max. 5 cm of fresh snow is expected. Light to moderate NW winds, brisk gusts in the NE mountains. At 1500 m in the north: +1 degree; at 2000 m: -3 degrees; in the south at 1500 m: +4 degrees; at 2000 m: 0 degrees.

Outlook

Wednesday will be heavily overcast with intermittent precipitation, snowfall above 1400 m. The focal point of precipitation will be in the western ranges in the afternoon, max. 10 cm of fresh snow is expected. Avalanche danger levels are not expected to change significantly.

Translated by Jeffrey McCabe, www.creativtrans.com

Avalanche problems



Danger ratings



Expositions

