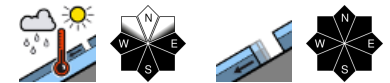


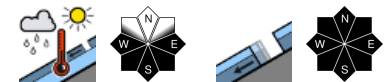
## At high altitudes moderate avalanche danger



2100 m  
 Schladminger Tauern Süd, Südliche Wölzer Tauern, Gurktaler Alpen, Schladminger Tauern Nord, Nördliche Wölzer Tauern, Seetaler Alpen, Gaaler Alpen, Totes Gebirge, Dachsteingebiet, Ennstaler Alpen, Rottenmanner Tauern, Eisenerzer Alpen, Triebener Tauern



Koralpe, Stub- und Gleinalpe, Mürzsteger Alpen, Hochschwabgebiet



### Avalanche problems



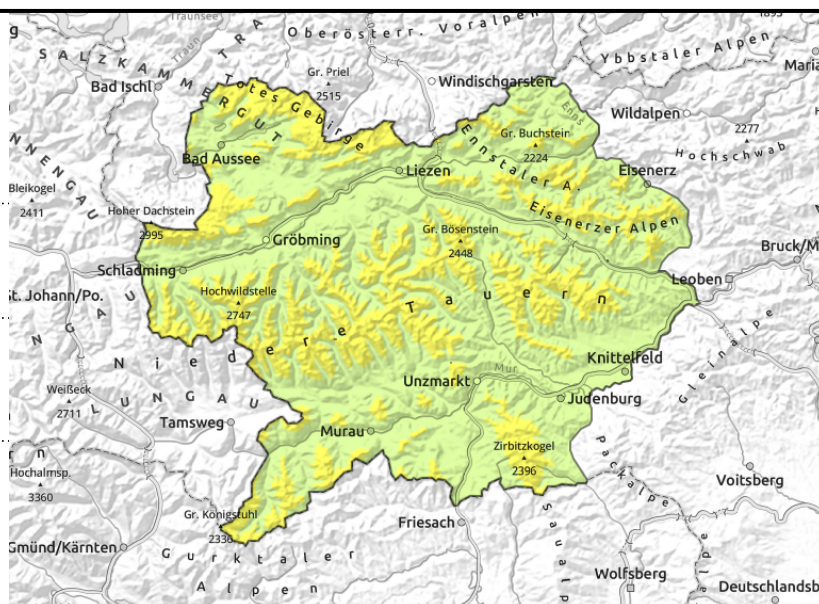
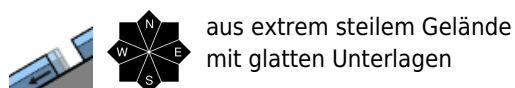
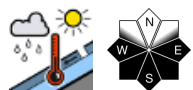
### Danger ratings



### Expositions



Schladminger Tauern Süd, Südliche Wölzer Tauern, Gurktaler Alpen, Schladminger Tauern Nord, Nördliche Wölzer Tauern, Seetaler Alpen, Gaaler Alpen, Totes Gebirge, Dachsteingebiet, Ennstaler Alpen, Rottenmanner Tauern, Eisenerzer Alpen, Triebener Tauern



## Decreasing snowdrift problem, increasing wet-snow/gliding-snow activity

Avalanche danger above 2100 m is moderate, below that altitude danger is low. Older snowdrift masses can be triggered mostly by large additional loading, releasing mostly small-to-medium sized slab avalanches. Due to rain impact and mild temperatures, wet-snow avalanches activity on sunny slopes is increasing. In addition, in all aspects, isolated naturally triggered glide-snow avalanches are possible.

### Snowpack structure

The snowpack base is stable by and large, but moist down to the ground, which means it can glide over smooth ground. Atop of it since Friday there has been up to 45 cm of fresh snow registered, often transported by southerly winds and deposited as snowdrifts on north-facing slopes atop soft layers of fresh snow and is often instable, settling is taking its time. On the southern flank of the Alps the snow quickly becomes soft and sticky, also on shady slopes the reserves of cold are dissipating.

### Weather

The latest low-pressure front over the weastern Mediterranean is weakening but still impacts the southern flank of the Alps. Thursday will start with high fog north of the Main Alpine Ridge, followed by sunny weather. South of the Tauern, cloud cover will persist, sunshine will be more rare, brief rain showers are possible, snowfall level at 1800 m. At 2000 m: +1 degrees; at 1500 m: +5 degrees. The southerly winds will be light, brisker on the eastern rim of the Alps.

On Friday weather conditions will deteriorate. From the south, heavy cloud cover will move in. Light precipitation is possible on the southern flank of the Alps, also on the northern flank by afternoon. The snowfall level will descend from 2000 down to 1300 m.

### Outlook

Gliding snow and wet-snow activity will increase.

#### Avalanche problems



#### Danger ratings



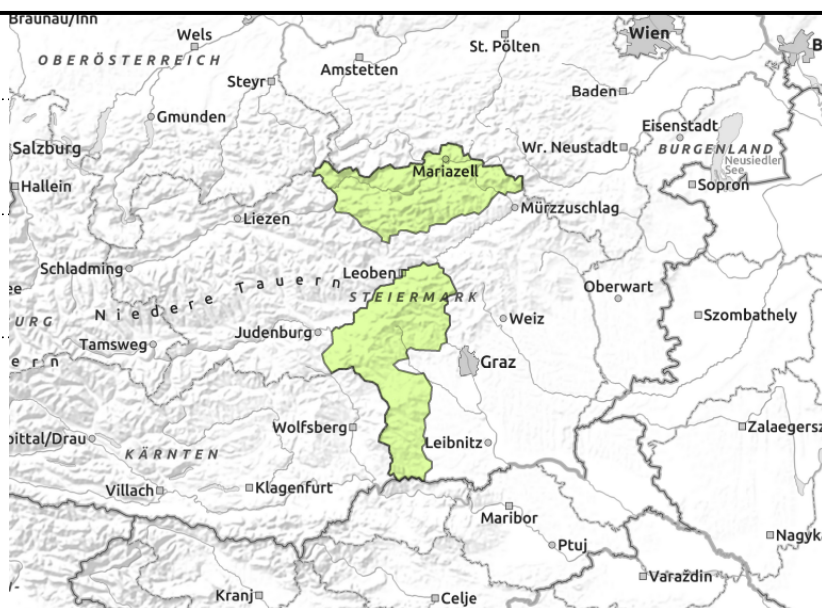
#### Expositions



**Koralpe, Stub- und Gleinalpe, Mürzsteiger Alpen, Hochschwabgebiet**



near ridgelines



**Low avalanche danger**

Avalanche danger is low. Due to rain impact and mild temperatures, the focus of danger zones lies on wet-snow and glide-snow avalanches.

**Snowpack structure**

The snowpack base is stable by and large, but moist down to the ground, which means it can glide over smooth ground. Atop of it since Friday there has been up to 45 cm of fresh snow registered, often transported by southerly winds and deposited as snowdrifts on north-facing slopes atop soft layers of fresh snow and is often instable, settling is taking its time.

**Weather**

The latest low-pressure front over the western Mediterranean is weakening but still impacts the southern flank of the Alps. Thursday will start with high fog north of the Main Alpine Ridge, followed by sunny weather. South of the Tauern, cloud cover will persist, sunshine will be more rare, brief rain showers are possible, snowfall level at 1800 m. At 2000 m: +1 degrees; at 1500 m: +5 degrees. The southerly winds will be light, brisker on the eastern rim of the Alps.

On Friday weather conditions will deteriorate. From the south, heavy cloud cover will move in. Light precipitation is possible on the southern flank of the Alps, also on the northern flank by afternoon. The snowfall level will descend from 2000 down to 1300 m.

**Outlook**

Gliding snow and wet-snow activity will increase.

Translated by Jeffrey McCabe, [www.creativtrans.com](http://www.creativtrans.com)

**Avalanche problems**



**Danger ratings**



**Expositions**

