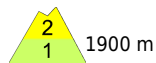
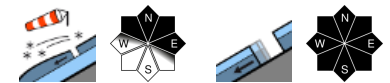


At high altitudes moderate avalanche danger by and large



1900 m
 Schladminger Tauern Süd, Südliche Wölzer Tauern, Gurktaler Alpen, Schladminger Tauern Nord, Nördliche Wölzer Tauern, Seetaler Alpen, Gaaler Alpen, Totes Gebirge, Dachsteingebiet, Ennstaler Alpen, Rottenmanner Tauern, Hochschwabgebiet, Eisenerzer Alpen, Triebener Tauern



Koralpe, Stub- und Gleinalpe, Mürztoger Alpen



Avalanche problems



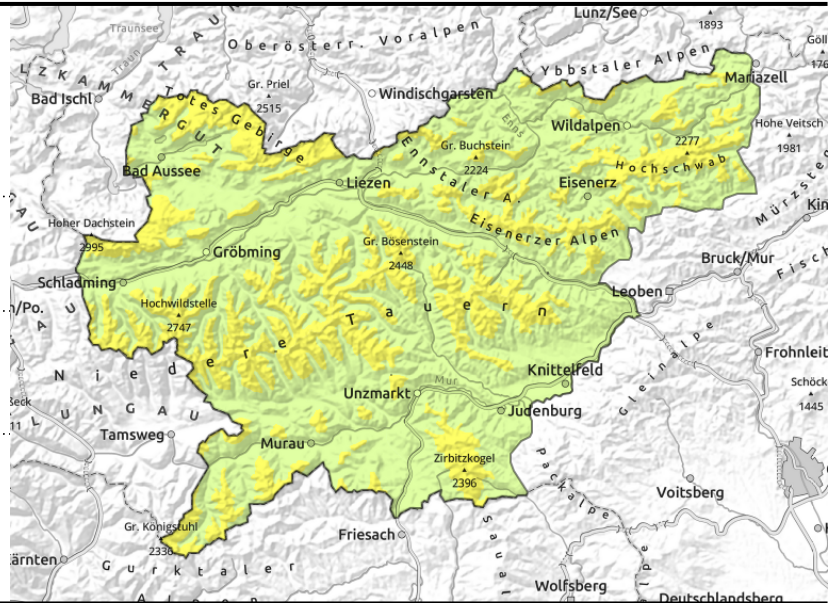
Danger ratings





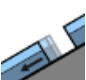

Expositions



Schladminger Tauern Süd, Südliche Wölzer Tauern, Gurktaler Alpen, Schladminger Tauern Nord, Nördliche Wölzer Tauern, Seetaler Alpen, Gaaler Alpen, Totes Gebirge, Dachsteingebiet, Ennstaler Alpen, Rottenmanner Tauern, Hochschwabgebiet, Eisenerzer Alpen, Triebener Tauern



  above timberline, in gullies, steep bowls

  seldom, in extremely steep terrain

Moderate avalanche danger on north-facing slopes

Avalanche danger above 1900 m is moderate, below that altitude danger is low. Particularly critical: wind-loaded gullies and steep slopes in extended northern aspects, since the drifts here lie deposited atop loose fresh snow. Medium-sized slab avalanches can be triggered by 1 person. In addition, isolated medium-sized naturally triggered avalanches are possible. In addition, isolated naturally triggered glide-snow avalanches possible in all aspects.

Snowpack structure

The snowpack base is stable by and large, but moist down to the ground, which means it can glide over smooth ground. Atop of it since Friday there has been up to 45 cm of fresh snow registered, often transported by southerly winds and deposited as snowdrifts on north-facing slopes atop soft layers of fresh snow and is often unstable, settling is taking its time.

Weather

The influence of a low over the western Mediterranean is receding, but clouds will still dominate on Wednesday, sunshine will be rare. In Gurktal and Seetal Alps, light rain showers are possible, snowfall level fluctuating between 1500 and 2000 m. NW winds will prevail, but at high altitudes winds will be southerly. At 2000 m: 0 degrees in the north, +3 degrees in the south; at 1500 m: +2 degrees in the north, +7 degrees in the south.

On Thursday weather conditions will be split. On the northern flank of the Alps, quite sunny. On the southern flank of the Alps, cloud cover will dominate.

Outlook

Gliding snow and wet snow activity will increase, snowdrift problem will recede.

Avalanche problems



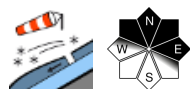
Danger ratings



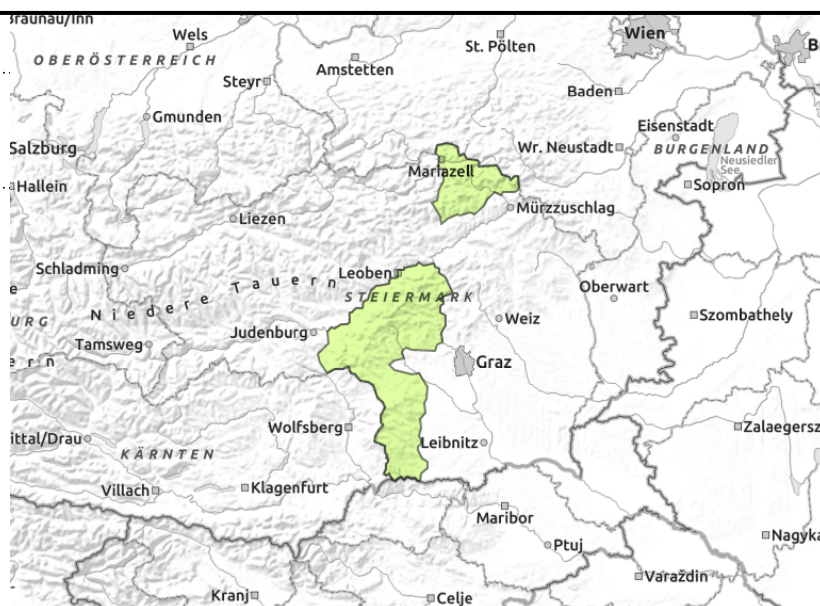
Expositions



Koralpe, Stub- und Gleinalpe, Mürzsteiger Alpen



near ridgelines



Low avalanche danger but isolated danger zones due to snowdrifts at high altitudes

Avalanche danger above the treeline is low, but there are isolated danger zones at high altitudes in northern aspects where near ridgelines or at entries into steep gullies the snowdrifts can trigger small-to-medium slab avalanches.

Snowpack structure

The fundament is stable by and large, but moist down to the ground. Some fresh snowfall has been registered which was transported to north-facing slopes by southerly winds. Fresh drifts lie deposited atop loose fresh snow and are still instable.

Weather

The influence of a low over the western Mediterranean is receding, but clouds will still dominate on Wednesday, sunshine will be rare. In Gurktal and Seetal Alps, light rain showers are possible, snowfall level fluctuating between 1500 and 2000 m. NW winds will prevail, but at high altitudes winds will be southerly. At 2000 m: 0 degrees in the north, +3 degrees in the south; at 1500 m: +2 degrees in the north, +7 degrees in the south.

On Thursday weather conditions will be split. On the northern flank of the Alps, quite sunny. On the southern flank of the Alps, cloud cover will dominate.

Outlook

Gliding snow and wet-snow activity will increase somewhat.

Translated by Jeffrey McCabe, www.creativtrans.com

Avalanche problems



Danger ratings



Expositions

