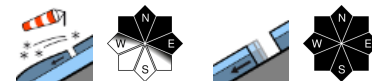


At high altitudes moderate avalanche danger by and large



forestline
 Schladminger Tauern Süd, Südliche Wölzer Tauern, Gurktaler Alpen, Schladminger Tauern Nord, Nördliche Wölzer Tauern, Seetaler Alpen, Gaaler Alpen, Totes Gebirge, Dachsteingebiet, Ennstaler Alpen, Rottenmanner Tauern, Hochschwabgebiet, Eisenerzer Alpen, Triebener Tauern, Mürztsteiger Alpen



Koralpe, Stub- und Gleinalpe



Avalanche problems



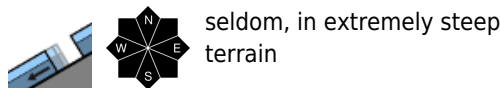
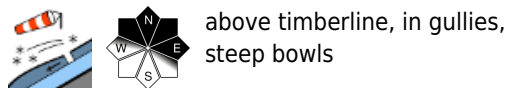
Danger ratings



Expositions



Schladminger Tauern Süd, Südliche Wölzer Tauern, Gurktaler Alpen, Schladminger Tauern Nord, Nördliche Wölzer Tauern, Seetaler Alpen, Gaaler Alpen, Totes Gebirge, Dachsteingebiet, Ennstaler Alpen, Rottenmanner Tauern, Hochschwabgebiet, Eisenerzer Alpen, Triebener Tauern, Mürzsteger Alpen



Moderate avalanche danger above treeline

Avalanche danger above the timberline is moderate, below that altitude danger is low. Particularly critical: wind-loaded gullies and steep slopes in extended northern aspects, since the drifts here lie deposited atop loose fresh snow. Medium-sized slab avalanches can be triggered by 1 person. In addition, isolated medium-sized naturally triggered avalanches are possible. In addition, isolated naturally triggered glide-snow avalanches possible in all aspects.

Snowpack structure

The snowpack base is stable by and large, but moist down to the ground, which means it can glide over smooth ground. Since Friday there has been up to 45 cm of fresh snow registered, often transported by southerly winds and deposited as snowdrifts on north-facing slopes atop soft layers of fresh snow and is often instable.

Weather

A Mediterranean low will bring mild, moist air masses to Styria on Tuesday. The SW airstream is full of clouds, few bright intervals are expected. On the southern flank of the Alps during the course of the day, minor precipitation, snowfall level at 1500 m. The SE/SW winds will be mostly light, brisker on the eastern rim of the Alps. At 2000 m: +1 degree; at 1500 m: +4 degrees

Also on Wednesday, the SW airstream will continue. A bit milder. Above 2000 m minor snow showers are possible.

Outlook

Gliding snow and wet snow activity will increase somewhat, the snowdrift problem will recede.

Avalanche problems



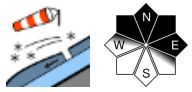
Danger ratings



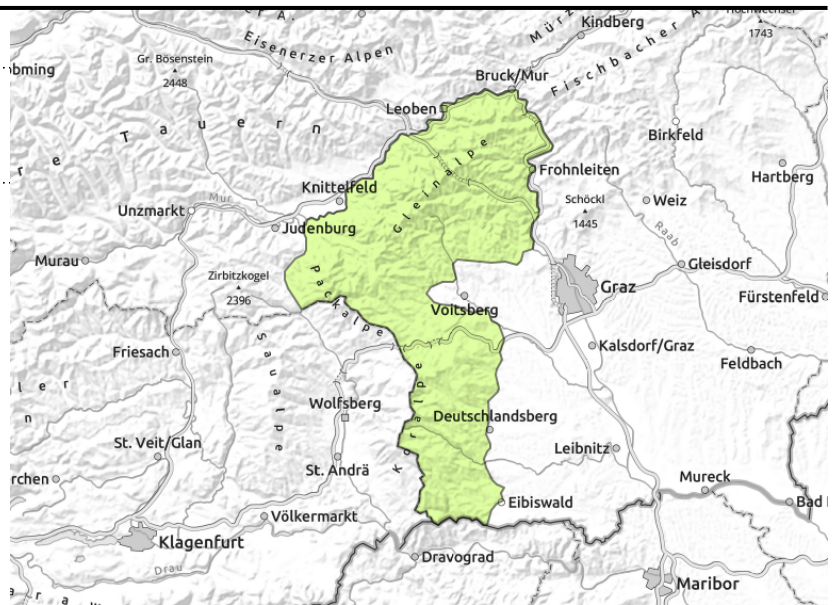
Expositions



Koralpe, Stub- und Gleinalpe



near ridgelines



Low avalanche danger but isolated danger zones due to snowdrifts at high altitudes

Avalanche danger above the treeline is low, but there are isolated danger zones at high altitudes in northern aspects where near ridgelines or at entries into steep gullies the snowdrifts can trigger small-to-medium slab avalanches.

Snowpack structure

The fundament is stable by and large, but moist down to the ground. Some fresh snowfall has been registered which was transported to north-facing slopes by southerly winds. Fresh drifts lie deposited atop loose fresh snow and are still instable.

Weather

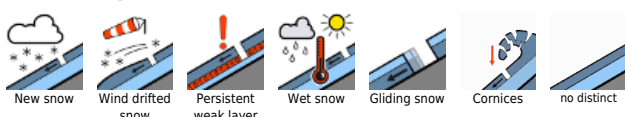
A Mediterranean low will bring mild, moist air masses to Styria on Tuesday. The SW airstream is full of clouds, few bright intervals are expected. On the southern flank of the Alps during the course of the day, minor precipitation, snowfall level at 1500 m. The SE/SW winds will be mostly light, brisker on the eastern rim of the Alps. At 2000 m: +1 degree; at 1500 m: +4 degrees
 Also on Wednesday, the SW airstream will continue. A bit milder. Above 2000 m minor snow showers are possible.

Outlook

Gliding snow and wet snow activity will increase somewhat, the snowdrift problem will recede.

Translated by Jeffrey McCabe, www.creativtrans.com

Avalanche problems



Danger ratings



Expositions

