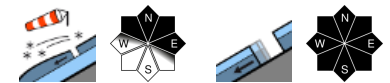


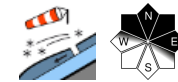
Moderate avalanche danger by and large at high altitudes



forestline
 Schladminger Tauern Süd, Südliche Wölzer Tauern, Gurktaler Alpen, Schladminger Tauern Nord, Nördliche Wölzer Tauern, Seetaler Alpen, Gaaler Alpen, Totes Gebirge, Dachsteingebiet, Ennstaler Alpen, Rottenmanner Tauern, Hochschwabgebiet, Eisenerzer Alpen, Triebener Tauern, Mürztsteiger Alpen



Koralpe, Östliche Fischbacher Alpen und Wechselgebiet, Stub- und Gleinalpe



Avalanche problems



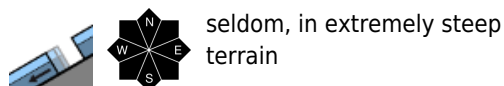
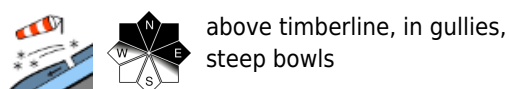
Danger ratings



Expositions



Schladminger Tauern Süd, Südliche Wölzer Tauern, Gurktaler Alpen, Schladminger Tauern Nord, Nördliche Wölzer Tauern, Seetaler Alpen, Gaaler Alpen, Totes Gebirge, Dachsteingebiet, Ennstaler Alpen, Rottenmanner Tauern, Hochschwabgebiet, Eisenerzer Alpen, Triebener Tauern, Mürzsteger Alpen



Moderate avalanche danger above treeline

Avalanche danger above the timberline is moderate, below that altitude danger is low. Particularly critical: wind-loaded gullies and steep slopes in extended northern aspects, since the drifts here lie deposited atop loose fresh snow or surface hoar. Medium-sized slab avalanches can be triggered by 1 person. In addition, isolated medium-sized naturally triggered avalanches are possible.

Snowpack structure

The snowpack base is stable by and large, but moist, which means it can glide over smooth ground. Since Friday there has been up to 45 cm of fresh snow registered, often transported by southerly winds and deposited as snowdrifts on north-facing slopes atop soft layers of fresh snow and is often instable.

Weather

On Monday, variably cloudy, visibility mostly adequate. The southerly winds will be moderate to brisk, later in the day slackening off. Temperatures rising slightly. At 2000 m: -3 to 0 degrees.

Outlook

On Tuesday gray skies from the southwest, rainfall will set in amid mild temperatures, snowfall level over 1500 m. Danger of glide-snow and wet-snow activity will increase somewhat. The snowdrift problem will recede.

Avalanche problems



Danger ratings



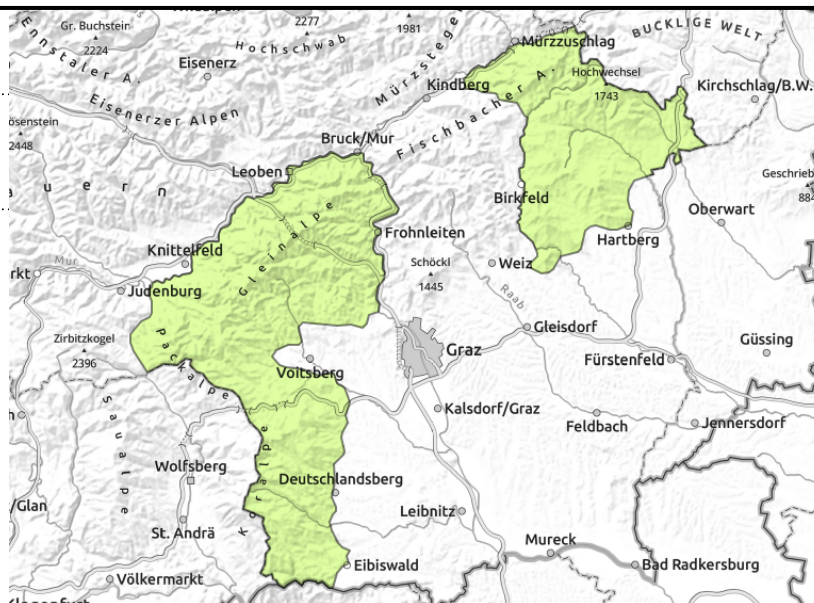
Expositions



Koralpe, Östliche Fischbacher Alpen und Wechselgebiet, Stub- und Gleinalpe



near ridgelines



Low avalanche danger but isolated danger zones due to snowdrifts at high altitudes

Avalanche danger above the treeline is low, but there are isolated danger zones at high altitudes in northern aspects where near ridgelines or at entries into steep gullies the snowdrifts can trigger small-to-medium slab avalanches.

Snowpack structure

The fundament is stable by and large, but moist down to the ground. Some fresh snowfall has been registered which was transported to north-facing slopes by southerly winds. Fresh drifts lie deposited atop loose fresh snow and are still instable.

Weather

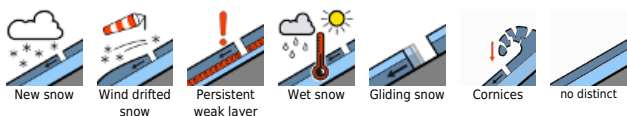
On Monday, variably cloudy, visibility mostly adequate. The southerly winds will be moderate to brisk, later in the day slackening off. Temperatures rising slightly. At 2000 m: -3 to 0 degrees.

Outlook

On Tuesday gray skies from the southwest, rainfall will set in amid mild temperatures, snowfall level over 1500 m. Danger of glide-snow and wet-snow activity will increase somewhat. The snowdrift problem will recede.

Translated by Jeffrey McCabe, www.creativtrans.com

Avalanche problems



Danger ratings



Expositions

