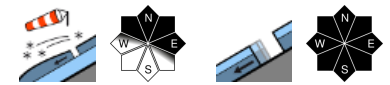


Considerable avalanche danger at high altitudes



forestline
 Schladminger Tauern Süd, Südliche Wölzer Tauern, Gurktaler Alpen, Schladminger Tauern Nord, Nördliche Wölzer Tauern, Seetaler Alpen, Gaaler Alpen, Totes Gebirge, Dachsteingebiet, Ennstaler Alpen, Rottenmanner Tauern, Hochschwabgebiet, Eisenerzer Alpen, Triebener Tauern



forestline
 Koralpe, Östliche Fischbacher Alpen und Wechselgebiet, Mürzsteger Alpen, Stub- und Gleinalpe



Avalanche problems



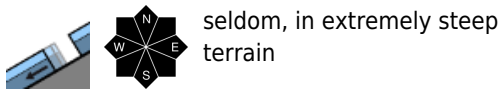
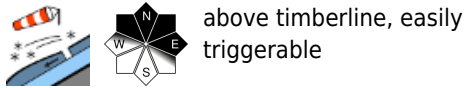
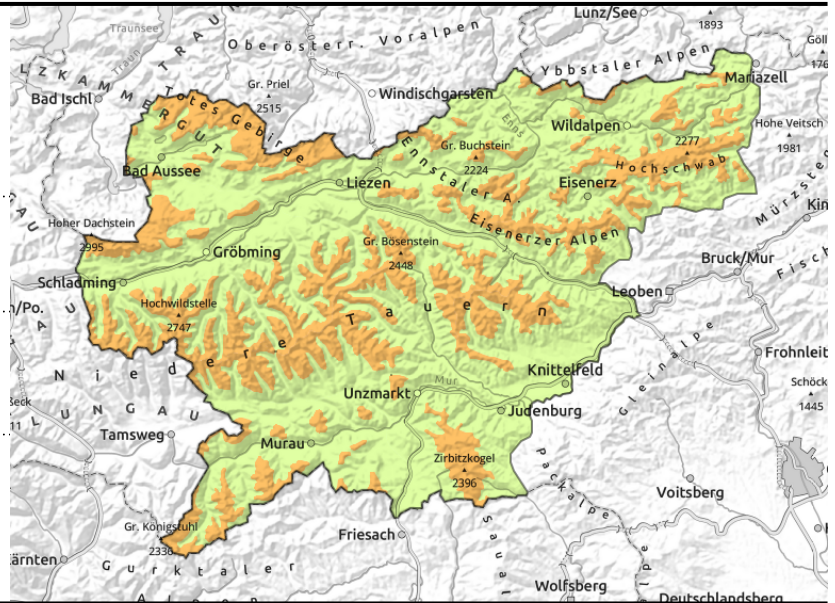
Danger ratings



Expositions



Schladminger Tauern Süd, Südliche Wölzer Tauern, Gurktaler Alpen, Schladminger Tauern Nord, Nördliche Wölzer Tauern, Seetaler Alpen, Gaaler Alpen, Totes Gebirge, Dachsteingebiet, Ennstaler Alpen, Rottenmanner Tauern, Hochschwabgebiet, Eisenerzer Alpen, Triebener Tauern



Considerable avalanche danger above treeline. Beware fresh snowdrifts.

Avalanche danger above the timberline is considerable, below that altitude danger is moderate. Particularly critical: wind-loaded gullies and steep slopes in extended northern aspects, since the drifts here lie deposited atop loose fresh snow or surface hoar. Self-restraint is necessary in all aspects due to snowdrift accumulations. Medium-sized slab avalanches can be triggered by 1 person, releases are likely in the danger zones. Steep extended north-facing slopes, since many new snowdrift accumulations have been. In addition, isolated medium-sized naturally triggered avalanches are possible.

Snowpack structure

The snowpack base is stable by and large, but moist, which means it can glide over smooth ground. Since Friday there has been up to 45 cm of fresh snow registered, often transported by southerly winds and deposited as snowdrifts on north-facing slopes atop soft layers of fresh snow and thin layers of surface hoar.

Weather

On Sunday, mostly sunny with some cloudbanks, moderate SW winds, brisker on the eastern rim of the Alps. At 2000 m: -1 to -3 degrees.

Outlook

If the SW airstream persists, clouds will dominate on Monday but it will remain dry. The snowdrift problem will recede slowly, avalanche danger levels decrease.

Avalanche problems



Danger ratings



Expositions



Koralpe, Östliche Fischbacher Alpen und Wechselgebiet, Mürzsteiger Alpen, Stub- und Gleinalpe



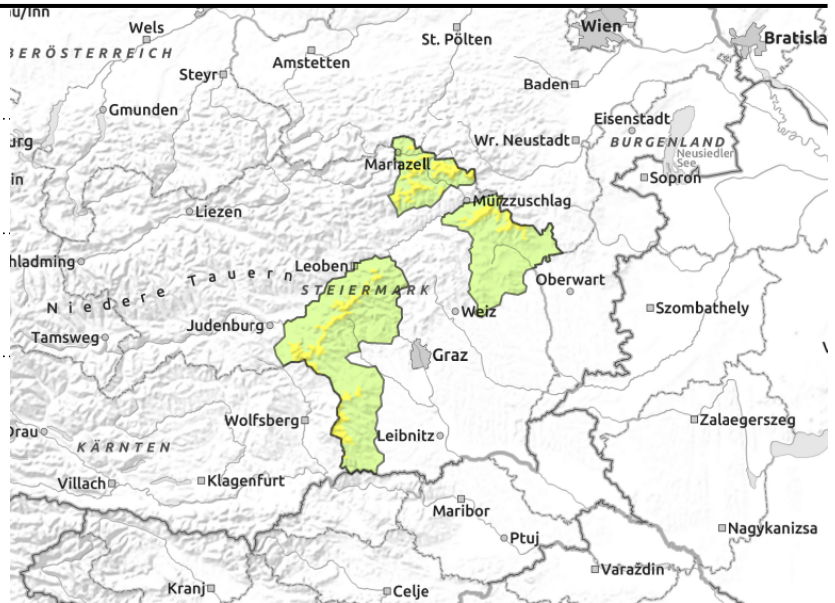
forestline



near ridgelines



seldom, in extremely steep terrain



Moderate avalanche danger due to freshly generated snowdrifts at high altitudes

Avalanche danger above the treeline is moderate, below that altitude danger is low. Danger zones occur where there are small freshly generated snowdrift accumulations in extended north-facing terrain: here in some spots a small-to-medium slab avalanche can be triggered by 1 person. In addition, small naturally triggered loose-snow avalanches are possible in all aspects in extremely steep rocky terrain.

Snowpack structure

The fundament is stable by and large. During the course of the day on Friday up to 20 cm was registered, initially with little wind impact deposited atop loose powder, later transported to north-facing slopes by southerly winds. The fresh snow can have weak layers inside it.

Weather

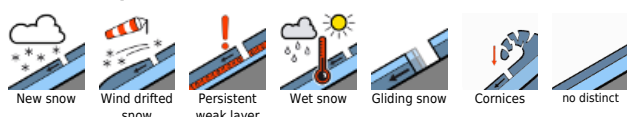
On Sunday, mostly sunny with some cloudbanks, moderate SW winds, brisker on the eastern rim of the Alps. At 2000 m: -1 to -3 degrees.

Outlook

If the SW airstream persists, clouds will dominate on Monday but it will remain dry. The snowdrift problem will recede slowly, avalanche danger levels decrease.

Translated by Jeffrey McCabe, www.creativtrans.com

Avalanche problems



Danger ratings



Expositions

