









Considerable avalanche danger at high altitudes

| | | | |
|---|----------------------|---|---|
|  | 3 2 forestline | Schladminger Tauern Süd, Südliche Wölzer Tauern, Gurktaler Alpen, Schladminger Tauern Nord, Nördliche Wölzer Tauern, Seetaler Alpen, Gaaler Alpen |  |
|  | 3 2 forestline | Dachsteingebiet, Totes Gebirge, Rottenmanner Tauern, Ennstaler Alpen, Hochschwabgebiet, EiseNERZER ALPEN, Triebener Tauern, Mürzsteger Alpen |  |
|  | 2 1 forestline | Koralpe, Stub- und Geinalpe, Östliche Fischbacher Alpen und Wechselgebiet |  |
|  | 1 | Mürztaler Alpen, Westliche Fischbacher Alpen und Grazer Bergland |  |

Avalanche problems



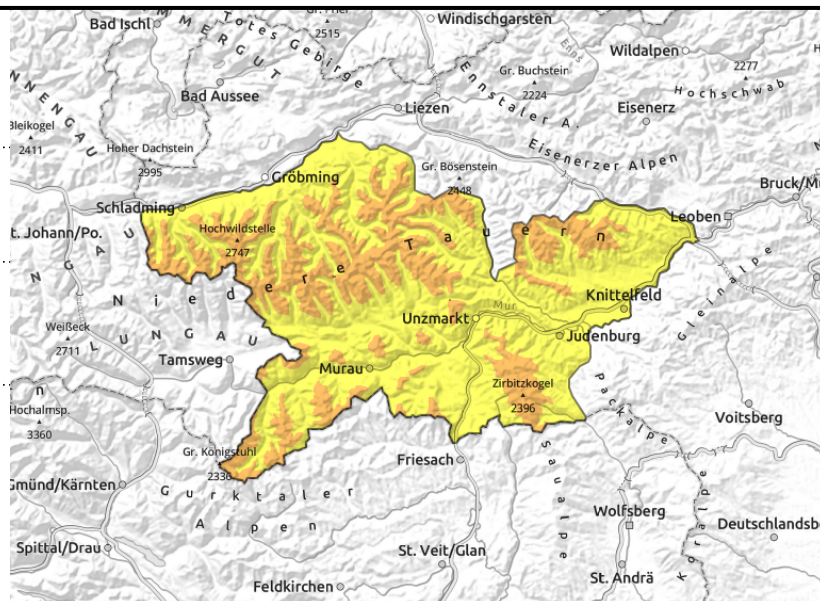
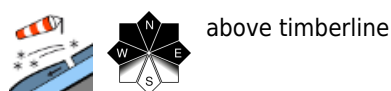
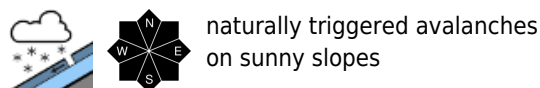
Danger ratings



Expositions



Schladminger Tauern Süd, Südliche Wölzer Tauern, Gurktaler Alpen, Schladminger Tauern Nord, Nördliche Wölzer Tauern, Seetaler Alpen, Gaaler Alpen



Considerable avalanche danger. Beware blanketed snowdrifts.

Avalanche danger above the timberline is considerable, below that altitude danger is moderate. Particularly critical: steep extended north-facing slopes, since many new snowdrift accumulations have been generated there. Self-restraint is imperative in all aspects. Medium-sized slab and loose-snow avalanches can be triggered even by 1 person on steep slopes. In addition, medium-sized naturally triggered avalanches can be expected, esp. in extremely steep rocky terrain.

Snowpack structure

The snowpack base is stable by and large, but there is a persistent weak layer problem on high-altitude shady slopes. On sunny slopes the fundament is isotherm and moist, glides over smooth ground. During the course of the day on Friday, up to 50 cm of fresh snow was registered, initially accompanied by little wind, but later the southerly winds transported the snow to north-facing slopes. Fresh snow can have weak layers which weakens the snowpack under the increasing weight.

Weather

On Friday night the precipitation will gradually come to an end in Styria's mountains. To start with, clouds will lodge against the mountain flanks from the south, later the sun will come out. Later still during the day on Saturday, thin high clouds will hamper the sunshine somewhat. Winds will be moderate. In eastern regions, brisk to strong S/SW winds. At 2000 m: -2 to -3 degrees.

Outlook

On Sunday, residual clouds will disperse in the morning, sun will prevail, with moderate SW winds, stronger on the eastern rim of the Alps. The fresh snow and snowdrift problem will slowly recede, avalanche danger levels decrease.

Avalanche problems



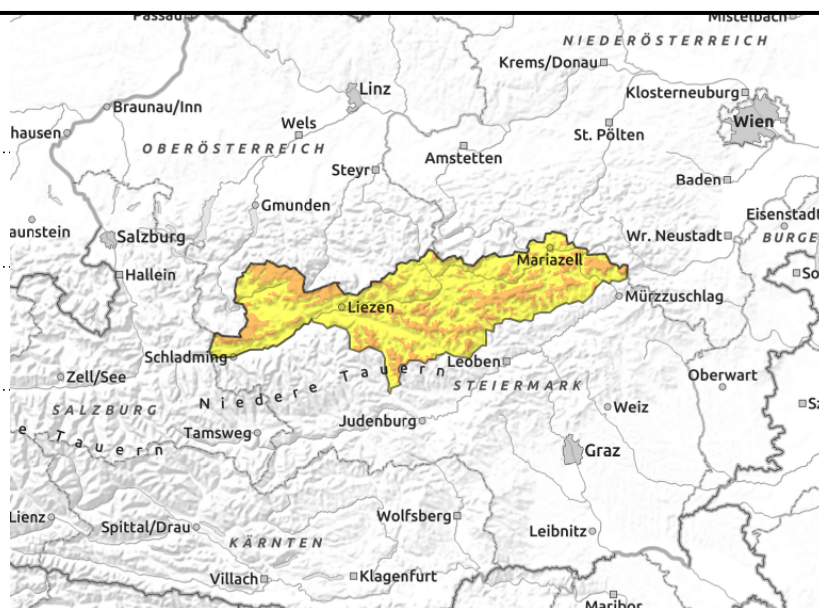
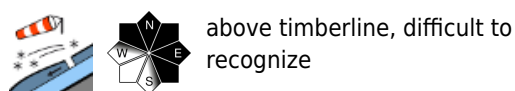
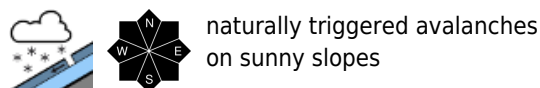
Danger ratings



Expositions



Dachsteingebiet, Totes Gebirge, Rottenmanner Tauern, Ennstaler Alpen, Hochschwabgebiet, Eisenerzer Alpen, Triebener Tauern, Mürzsteger Alpen



Beware blanketed snowdrifts

Avalanche danger above the timberline is considerable, below that altitude danger is moderate. Danger zones occur in all aspects, hard to recognize since they are blanketed by fresh snowdrifts. Particularly critical: steep north/east-facing slopes, since many new snowdrift accumulations have been generated there. Self-restraint is imperative in all aspects. Medium-sized slab and loose-snow avalanches can be triggered even by 1 person on steep slopes. In addition, medium-sized naturally triggered avalanches can be expected, esp. in extremely steep rocky terrain.

Snowpack structure

The snowpack base is stable by and large, but there is a persistent weak layer problem on high-altitude shady slopes. On sunny slopes the fundament is isotherm and moist, glides over smooth ground. During the course of the day on Friday, up to 50 cm of fresh snow was registered, initially accompanied by little wind, but later the southerly winds transported the snow to north-facing slopes. Fresh snow can have weak layers which weakens the snowpack under the increasing weight.

Weather

On Friday night the precipitation will gradually come to an end in Styria's mountains. To start with, clouds will lodge against the mountain flanks from the south, later the sun will come out. Later still during the day on Saturday, thin high clouds will hamper the sunshine somewhat. Winds will be moderate. In eastern regions, brisk to strong S/SW winds. At 2000 m: -2 to -3 degrees.

Outlook

On Sunday, residual clouds will disperse in the morning, sun will prevail, with moderate SW winds, stronger on the eastern rim of the Alps. The fresh snow and snowdrift problem will slowly recede, avalanche danger levels decrease.

Avalanche problems



Danger ratings



Expositions



Koralpe, Stub- und Gleinalpe, Östliche Fischbacher Alpen und Wechselgebiet



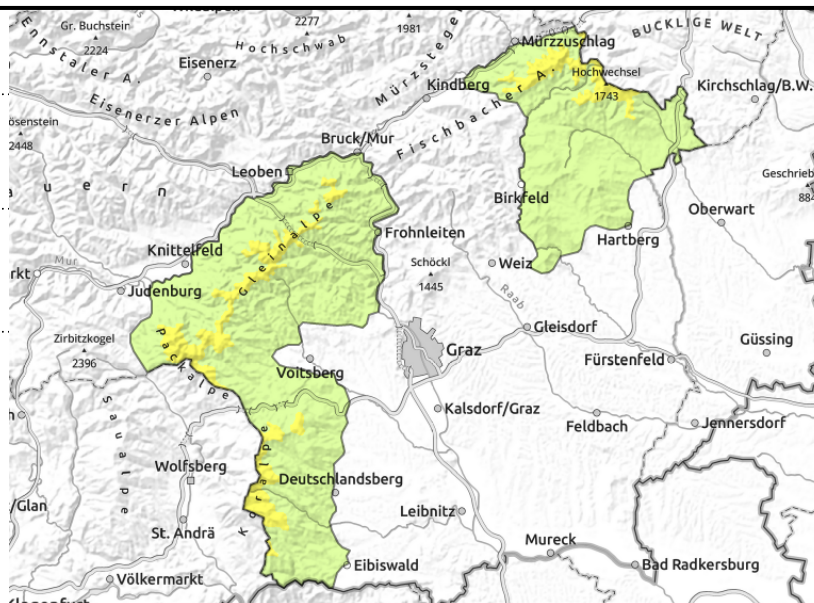
forestline



near ridgelines



small wet-snow slides



Moderate avalanche danger due to freshly generated snowdrifts at high altitudes

Avalanche danger above the treeline is moderate, below that altitude danger is low. Danger zones occur where there are small freshly generated snowdrift accumulations in extended east-facing terrain: here in some spots a small-to-medium slab avalanche can be triggered by 1 person. In addition, naturally triggered wet-snow slides are possible in all aspects.

Snowpack structure

The fundament is stable by and large. During the course of the day on Friday up to 20 cm of fresh snow fell, the intensifying southerly winds transported it to north-facing slopes. Moreover there are weak layers inside it.

Weather

On Friday night the precipitation will gradually come to an end in Styria's mountains. To start with, clouds will lodge against the mountain flanks from the south, later the sun will come out. Later still during the day on Saturday, thin high clouds will hamper the sunshine somewhat. Winds will be moderate. In eastern regions, brisk to strong S/SW winds. At 2000 m: -2 to -3 degrees.

Outlook

On Sunday, residual clouds will disperse in the morning, sun will prevail, with moderate SW winds, stronger on the eastern rim of the Alps. The fresh snow and snowdrift problem will slowly recede, avalanche danger levels decrease.

Avalanche problems



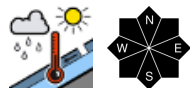
Danger ratings



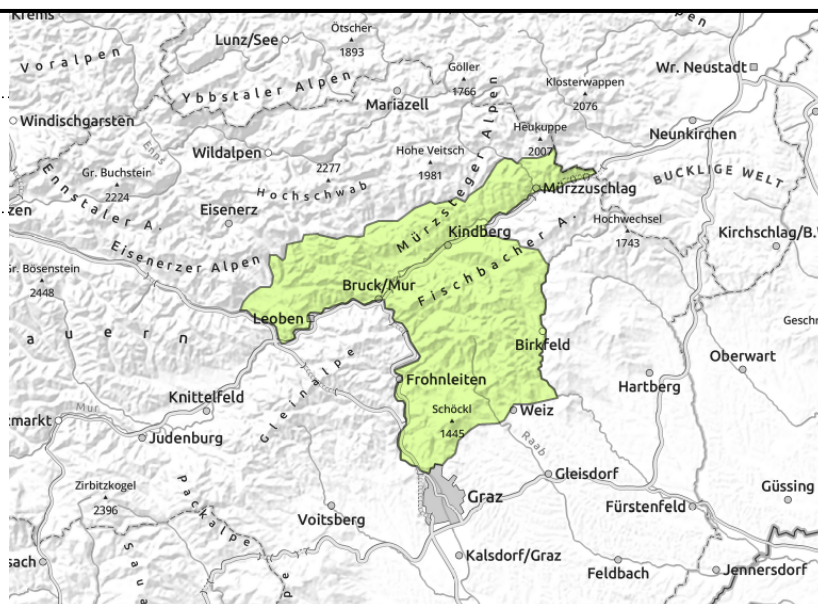
Expositions



Mürztaler Alpen, Westliche Fischbacher Alpen und Grazer Bergland



small wet-snow slides



Fresh snowfall on bare ground: a new winter landscape has been created

Avalanche danger is low. The wet fresh fallen snow can generate small, naturally triggered wet-snow slides.

Snowpack structure

On Friday, up to 15 cm of fresh snow fell, largely on bare ground. Depending on how the snowfall level changes, it could make the snowpack wet.

Weather

On Friday night the precipitation will gradually come to an end in Styria's mountains. To start with, clouds will lodge against the mountain flanks from the south, later the sun will come out. Later still during the day on Saturday, thin high clouds will hamper the sunshine somewhat. Winds will be moderate. In eastern regions, brisk to strong S/SW winds. At 2000 m: -2 to -3 degrees.

Outlook

On Sunday, residual clouds will disperse in the morning, sun will prevail, with moderate SW winds, stronger on the eastern rim of the Alps. Avalanche danger will remain low.

Translated by Jeffrey McCabe, www.creativtrans.com

Avalanche problems



Danger ratings



Expositions

