
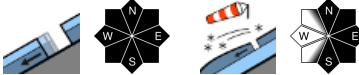



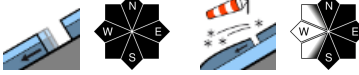


Freshly generated snowdrifts at highest altitudes & naturally triggered glide-snow avalanches in general

	Mürzsteger Alpen, Hochschwabgebiet, Eisenerzer Alpen, Triebener Tauern, Nördliche Wölzer Tauern, Rottenmanner Tauern, Ennstaler Alpen, Schladminger Tauern Nord	
	Koralpe, Stub- und Gleinalpe, Seetaler Alpen, Gurktaler Alpen, Gaaler Alpen, Südliche Wölzer Tauern, Schladminger Tauern Süd	
	Dachsteingebiet, Totes Gebirge	

Avalanche problems



Danger ratings



Expositions



Mürzsteiger Alpen, Hochschwabgebiet, Eisenerzer Alpen, Triebener Tauern, Nördliche Wölzer Tauern, Rottenmanner Tauern, Ennstaler Alpen, Schladminger Tauern Nord



in all aspects



only above 2000 m



Naturally triggered avalanches in steep terrain, isolated high-altitude snowdrift problem

Avalanche danger is low, but isolated naturally triggered glide-snow avalanches can trigger on steep slopes in all aspects. Open glide cracks are indicators of imminent danger. In addition, isolated danger zones on high-altitude N/E/S-facing slopes have small snowdrift accumulations. Particularly at entries into extremely steep gullies, backcountry tourers can trigger a small slab avalanche.

Snowpack structure

The snowpack fundament is stable by and large, isolated persistent weak layer problems exist at high altitudes. Since Monday on N/E/S facing slopes, snowdrift patches have been generated, mostly well bonded with the snowpack. On sunny slopes the snowpack is isotherm and moist, on shady slopes the snowpack at high altitudes still has reserves of cold. On steep slopes with smooth ground the snowpack glides away up to high altitudes.

Weather

On Thursday a low over Upper Italy will send its harbingers in the form of cloudbanks to the mountains of Styria. Particularly the summits of the Gurktal Alps and Niedere Tauern will often be shrouded in clouds but it will probably remain dry, and some afternoon sunshine is possible. Brisk to strong SW winds, stormy near the Koralpe. At 2000 m: -1 degree at the Turrach and +4 degrees in Totes Gebirge.

Outlook

On Friday the low over Italy will bring gray skies and wet weather, frequent rainfall/snowfall (heavy in western and southern Upper Styria). Snowfall level will drop in the Northern Alps to below 1000 m, south of the Main Alpine Ridge it will lie at 1300 m. At high altitudes, a snowdrift problem will be generated, avalanche danger levels will increase.

Avalanche problems



Danger ratings



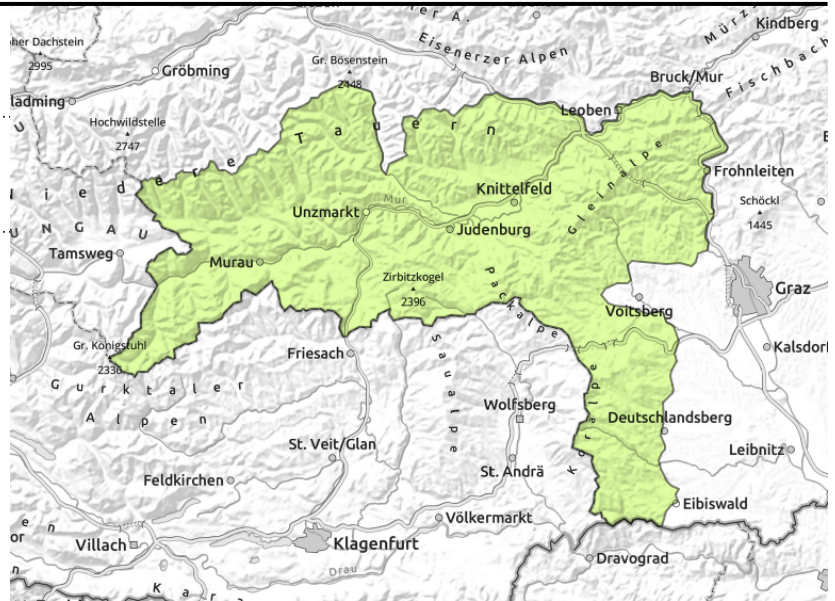
Expositions



**Koralpe, Stub- und Gleinalpe, Seetaler Alpen,
 Gurktaler Alpen, Gaaler Alpen, Südliche Wölzer
 Tauern, Schladminger Tauern Süd**



possible at any time of day or
 night, at all altitudes



Isolated naturally triggered glide-snow avalanches in steep terrain

Avalanche danger is generally low. On steep slopes in all aspects, isolated naturally triggered glide-snow and wet-snow avalanches can be expected. Open glide cracks are indicators of imminent danger.

Snowpack structure

The snowpack fundament is stable, persistent weak layer on shady slopes. On sunny slopes the snowpack is isotherm and moist, on shady slopes at high altitudes there are still reserves of cold. In steep terrain on smooth ground the snowpack glides over the ground at high altitudes. An area-wide snowpack exists only above the treeline.

Weather

On Thursday a low over Upper Italy will send its harbingers in the form of cloudbanks to the mountains of Styria. Particularly the summits of the Gurktal Alps and Niedere Tauern will often be shrouded in clouds but it will probably remain dry, and some afternoon sunshine is possible. Brisk to strong SW winds, stormy near the Koralpe. At 2000 m: -1 degree at the Turrach and +4 degrees in Totes Gebirge.

Outlook

On Friday the low over Italy will bring gray skies and wet weather, frequent rainfall/snowfall (heavy in western and southern Upper Styria). Snowfall level will drop in the Northern Alps to below 1000 m, south of the Main Alpine Ridge it will lie at 1300 m. At high altitudes, a snowdrift problem will be generated, avalanche danger levels will increase.

Avalanche problems



Danger ratings



Expositions



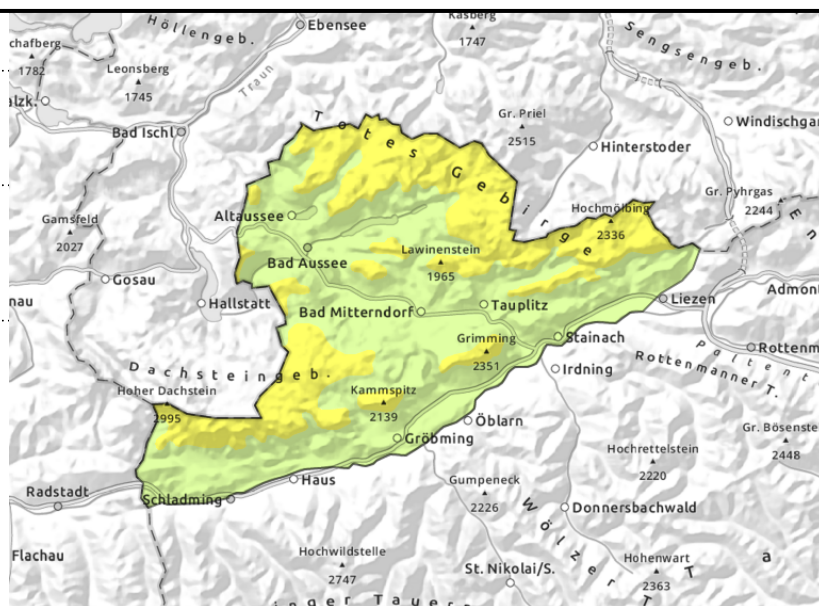
Dachsteingebiet, Totes Gebirge



possible at any time of day or night in all aspects, at all altitudes



in gullies, steep bowls



Naturally triggered glide-snow avalanches in steep terrain and snowdrifts on east at high altitudes

Above 2000 m moderate avalanche danger, below that altitude danger is low. Isolated danger zones occur from trigger-prone snowdrift accumulations on N/E/S-facing slopes. In addition, on steep slopes in all aspects naturally triggered glide-snow avalanches reaching medium-size can trigger. Open glide cracks are indicators of imminent danger.

Snowpack structure

The snowpack base is stable by and large, only on shady slopes at high altitudes there are still reserves of cold. Since Monday on east and south-facing slopes, snowdrifts have accumulated, bonding is mostly good. On sunny slopes the snowpack isotherm and moist, on shady slopes there are still reserves of cold. In steep terrain on smooth ground the snowpack glides over the ground at high altitudes. An area-wide snowpack exists only above the treeline.

Weather

On Thursday a low over Upper Italy will send its harbingers in the form of cloudbanks to the mountains of Styria. Particularly the summits of the Gurktal Alps and Niedere Tauern will often be shrouded in clouds but it will probably remain dry, and some afternoon sunshine is possible. Brisk to strong SW winds, stormy near the Koralpe. At 2000 m: -1 degree at the Turrach and +4 degrees in Totes Gebirge.

Outlook

On Friday the low over Italy will bring gray skies and wet weather, frequent rainfall/snowfall (heavy in western and southern Upper Styria). Snowfall level will drop in the Northern Alps to below 1000 m, south of the Main Alpine Ridge it will lie at 1300 m. At high altitudes, a snowdrift problem will be generated, avalanche danger levels will increase.

Translated by Jeffrey McCabe, www.creativtrans.com

Avalanche problems



Danger ratings



Expositions

