













Caution in starting zones: wet-snow/glide-snow avalanches

1	Mürzsteiger Alpen, Hochschwabgebiet	   
1	Koralpe, Stub- und Gleinalpe	   
1	Schladminger Tauern Nord, Dachsteingebiet, Totes Gebirge, Nördliche Wölzer Tauern, Schladminger Tauern Süd, Gurktaler Alpen, Südliche Wölzer Tauern, Gaaler Alpen, Triebener Tauern, Rottenmanner Tauern, Ennstaler Alpen, Seetaler Alpen, Eisenerzer Alpen	   

Avalanche problems



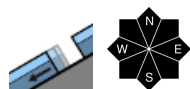
Danger ratings



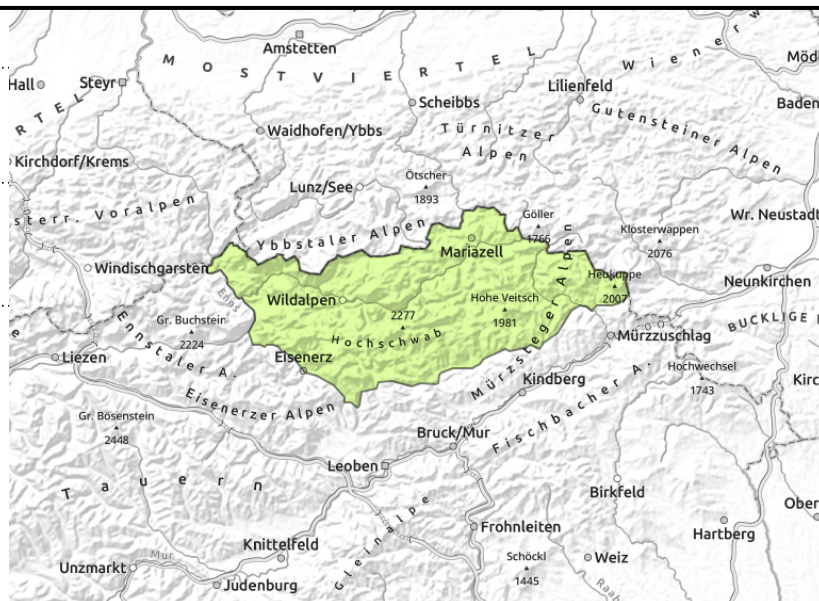
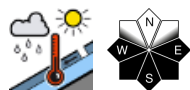
Expositions



Mürzsteiger Alpen, Hochschwabgebiet



in all aspects



Poor visibility. Naturally triggered glide-snow avalanches in steep terrain.

From Hochschwab to Rax, low avalanche danger. But on steep slopes in all aspects, naturally triggered glide-snow/wet-snow avalanches are possible, releases mostly medium-sized. Open glide cracks are indicators of imminent danger. The forecast fresh snowfall and wind for Monday will not be relevant to the snowdrift problem to start with.

Snowpack structure

Rainfall on Saturday made the snowpack much wetter, lower temperatures on Sunday made it regain a bit of firmness. On sunny slopes the snowpack is mostly isotherm and moist, on shady slopes there are still reserves of cold up to higher altitudes. Windblown slopes and crests are often hard or icy, such danger zones are especially risky for falling. Up to high altitudes the snowpack is very moist-to-wet due to rain impact, can glide over smooth ground. An area-wide snowpack begins only above the treeline.

Weather

At night a weak cold front will reach the Eastern Alps from the northwest. Monday will begin with heavy cloud cover, the peaks in fog, intermittent light-to-moderate snowfall on the northern flank of the Alps, snowfall level at 1300 m. Isolated showers possibly spreading to the south. The NW winds mostly moderate. At 2000 m: -4 degrees; at 1500 m: 0 degrees.

Also on Tuesday in northern Upper Styria, variable conditions, minor snowfall, most of the peaks in fog. Further south, clouds will disperse, intermittent sunshine. Moderate winds, temperatures dropping somewhat.

Outlook

Avalanche danger levels are not expected to change significantly. The gliding snow problem will persist.

Avalanche problems



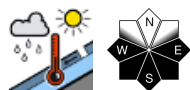
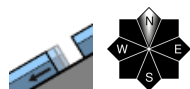
Danger ratings



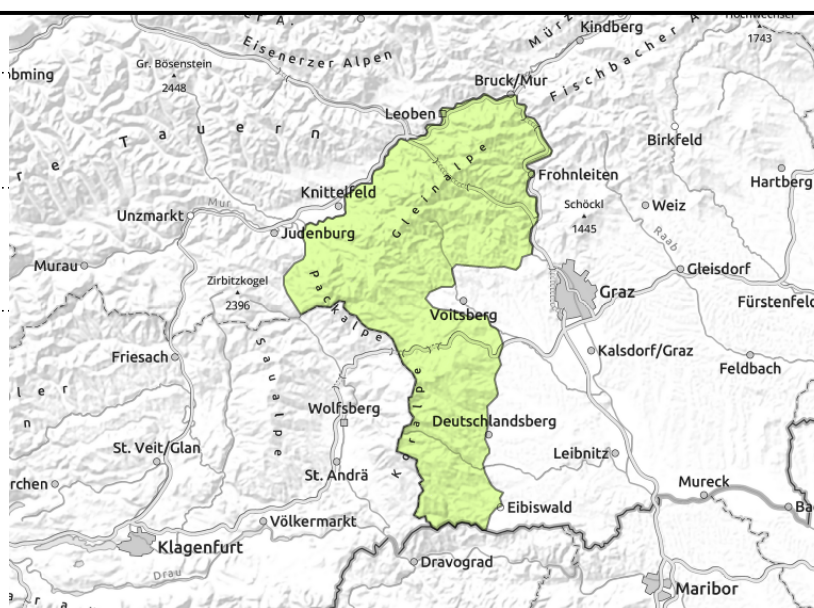
Expositions



Koralpe, Stub- und Gleinalpe



in very isolated cases



Very isolated glide-snow/wet-snow avalanches in steep terrain

Avalanche danger is generally low. On steep slopes in all aspects, isolated naturally triggered glide-snow and wet-snow avalanches can be expected.

Snowpack structure

Due to rain impact and marked rise in temperatures on Saturday the snowpack became wetter and glided over smooth ground. Due to the forecast drop in temperatures it will regain firmness. The slopes are becoming bare of snow, sufficient snow exists only above the treeline. The mountains around Graz and Wechsel are already without snow.

Weather

At night a weak cold front will reach the Eastern Alps from the northwest. Monday will begin with heavy cloud cover, the peaks in fog, intermittent light-to-moderate snowfall on the northern flank of the Alps, snowfall level at 1300 m. Isolated showers possibly spreading to the south. The NW winds mostly moderate. At 2000 m: -4 degrees; at 1500 m: 0 degrees.

Also on Tuesday in northern Upper Styria, variable conditions, minor snowfall, most of the peaks in fog. Further south, clouds will disperse, intermittent sunshine. Moderate winds, temperatures dropping somewhat.

Outlook

Avalanche danger will remain low.

Avalanche problems



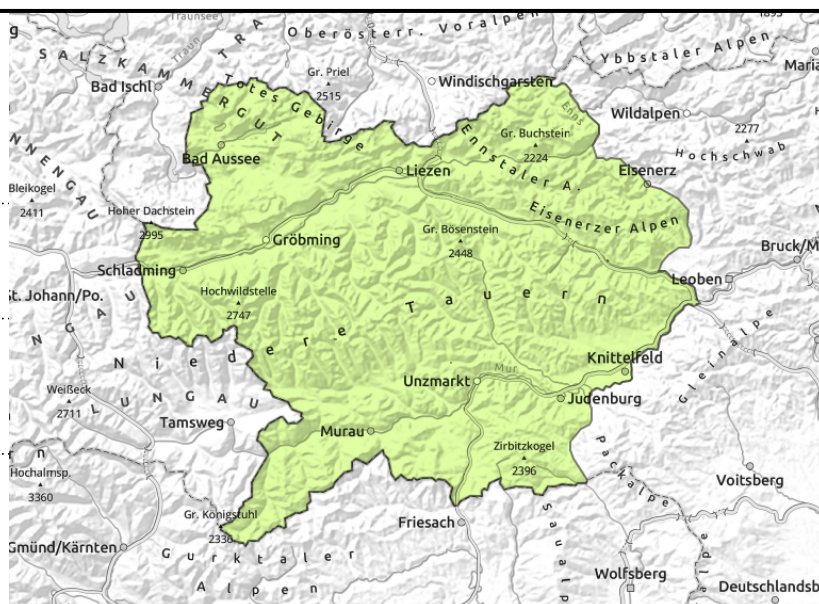
Danger ratings



Expositions



Schladminger Tauern Nord, Dachsteingebiet, Totes Gebirge, Nördliche Wölzer Tauern, Schladminger Tauern Süd, Gurktaler Alpen, Südliche Wölzer Tauern, Gaaler Alpen, Triebener Tauern, Rottenmanner Tauern, Ennstaler Alpen, Seetaler Alpen, Eisenerzer Alpen



possible at any time of day or night in all aspects up to 2400 m



Poor visibility. Isolated unsettled snowdrifts on shady high-altitude slopes. Naturally triggered glide-snow avalanches in steep terrain.

Isolated danger zones due to trigger-prone snowdrift accumulations occur in isolated cases on shady slopes above 2300 m, esp. on east-facing slopes caution is urged where isolated slab avalanches (small-to-medium) can be triggered by large additional loading. In addition, on steep slopes in all aspects, naturally triggered glide-snow and wet-snow avalanches of medium size are possible at any time of day or night. Open glide cracks are indicators of imminent danger.

Snowpack structure

Due to the marked rise in temperatures and solar radiation on Friday the fresh snow was able to settle, weak layers were dissolved; only on high-altitude shady slopes are there still older snowdrifts. The precipitation on Saturday was minor (below 2000 m as rain), the fresh snow was moist, thus not transportable. The drop in temperatures on Sunday stabilized the snowpack anew. The minor fresh snow on Monday is not relevant to avalanche danger. On sunny slopes the snowpack is mostly isotherm and moist, shady slopes higher up still have reserves of cold. In steep terrain where the ground is smooth, the snowpack glides downhill. An area-wide snowpack begins only above the treeline.

Weather

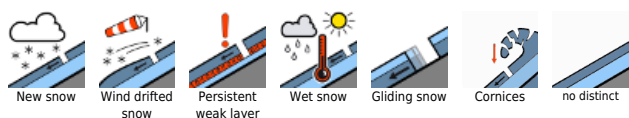
At night a weak cold front will reach the Eastern Alps from the northwest. Monday will begin with heavy cloud cover, the peaks in fog, intermittent light-to-moderate snowfall on the northern flank of the Alps, snowfall level at 1300 m. Isolated showers possibly spreading to the south. The NW winds mostly moderate. At 2000 m: -4 degrees; at 1500 m: 0 degrees.

Also on Tuesday in northern Upper Styria, variable conditions, minor snowfall, most of the peaks in fog. Further south, clouds will disperse, intermittent sunshine. Moderate winds, temperatures dropping somewhat.

Outlook

Avalanche danger levels are not expected to change significantly. The gliding snow problem will

Avalanche problems



Danger ratings



Expositions



persist.

Translated by Jeffrey McCabe, www.creativtrans.com

Avalanche problems



Danger ratings



Expositions

