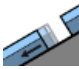



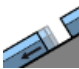









Caution in starting zones: wet-snow/glide-snow avalanches

1	Mürzsteiger Alpen, Hochschwabgebiet	   
1	Koralpe, Stub- und Gleinalpe	   
1	Schladminger Tauern Nord, Dachsteingebiet, Totes Gebirge, Nördliche Wölzer Tauern, Schladminger Tauern Süd, Gurktaler Alpen, Südliche Wölzer Tauern, Gaaler Alpen, Triebener Tauern, Rottenmanner Tauern, Ennstaler Alpen, Seetaler Alpen, Eisenerzer Alpen	   

Avalanche problems



Danger ratings



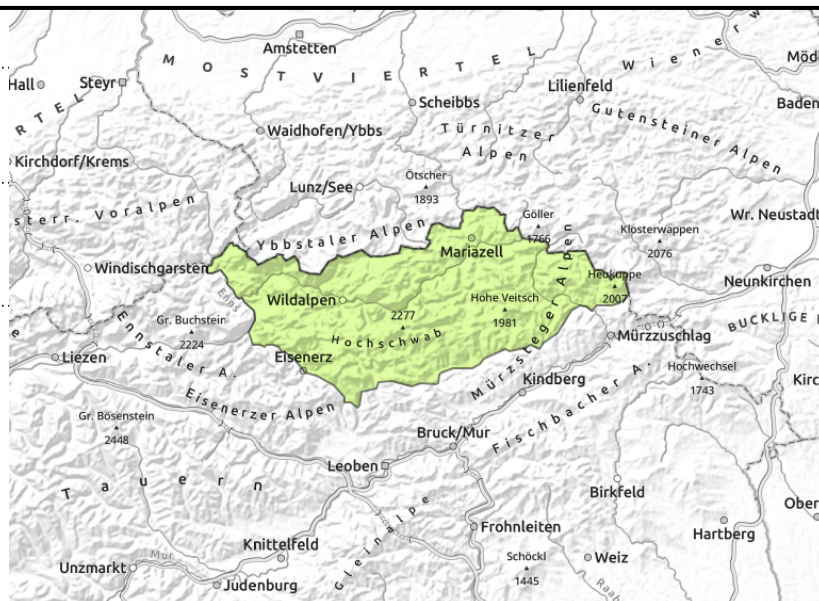
Expositions



Mürzsteiger Alpen, Hochschwabgebiet



in all aspects



Quite isolated ridgeline snowdrift patches, naturally triggered glide-snow avalanches in steep terrain

From Hochschwab to Rax, low avalanche danger. On steep slopes in all aspects, naturally triggered glide-snow/wet-snow avalanches can't be excluded. Open glide cracks are indicators of imminent danger. In addition, at high altitudes in extended east-facing terrain behind discontinuities there are snowdrift accumulations which in places can be triggered by 1 person, releases reaching medium-to-large size.

Snowpack structure

At high altitudes, isolated older snowdrift patches were generated, the drifts have not yet bonded with the snowpack surface. The minor fresh snow above 2000 m was moist, thus not prone to transport. On sunny slopes the snowpack is mostly isotherm and moist, on Sunday melt-freeze crusts could form due to lower temperatures. On shady slopes there are still reserves of cold. Windblown slopes and crests are often hard or icy, such danger zones are especially risky for falling. Up to high altitudes the snowpack is very moist-to-wet due to rain impact, can glide over smooth ground. An area-wide snowpack begins only above the treeline.

Weather

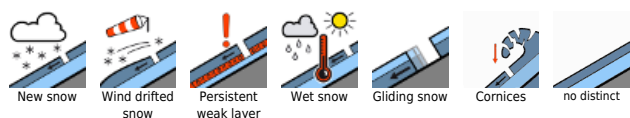
In the wake of a minor cold front, high-pressure conditions will move in. Sunday will start with cloud cover, esp. on the northern flank of the Alps, brief rain/snow showers are possible, later on sunnier, and in late afternoon high-altitude clouds moving in from the west. Light winds. At 2000 m: -1 degree; at 1500 m: +4 degrees.

On Monday the next perturbation will arrive in the north, heavy clouds from the start, followed by light snowfall, snowfall level at 1500 m. Isolated showers could spread to the south. The NW winds will be light-to-moderate, temperatures will drop slightly.

Outlook

Avalanche danger levels are not expected to change significantly. The gliding snow problem will persist.

Avalanche problems



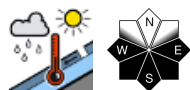
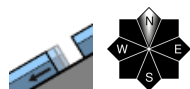
Danger ratings



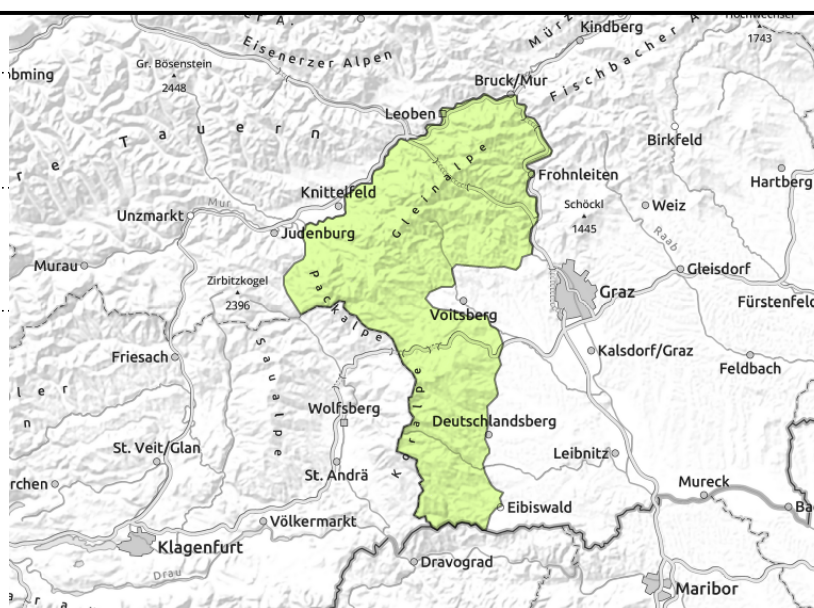
Expositions



Koralpe, Stub- und Gleinalpe



in very isolated cases



Isolated glide-snow/wet-snow avalanches in steep terrain

Avalanche danger is generally low. On steep slopes in all aspects, naturally triggered glide-snow and wet-snow avalanches can be expected.

Snowpack structure

At high altitudes, older snowdrift accumulations are well bonded with the snowpack surface, tensions have decreased with the higher temperatures. At intermediate and lower altitudes the snowpack is very moist-to-wet due to rain impact, can glide over smooth ground. The slopes near Graz and Wechsel are mostly bare of snow.

Weather

In the wake of a minor cold front, high-pressure conditions will move in. Sunday will start with cloud cover, esp. on the northern flank of the Alps, brief rain/snow showers are possible, later on sunnier, and in late afternoon high-altitude clouds moving in from the west. Light winds. At 2000 m: -1 degree; at 1500 m: +4 degrees.

On Monday the next perturbation will arrive in the north, heavy clouds from the start, followed by light snowfall, snowfall level at 1500 m. Isolated showers could spread to the south. The NW winds will be light-to-moderate, temperatures will drop slightly.

Outlook

Avalanche danger will remain low

Avalanche problems



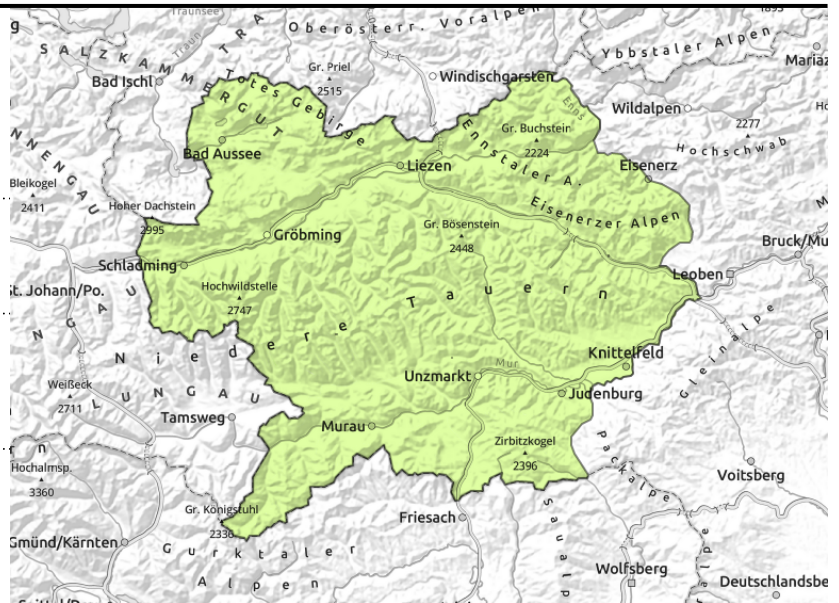
Danger ratings



Expositions



Schladminger Tauern Nord, Dachsteingebiet, Totes Gebirge, Nördliche Wölzer Tauern, Schladminger Tauern Süd, Gurktaler Alpen, Südliche Wölzer Tauern, Gaaler Alpen, Triebener Tauern, Rottenmanner Tauern, Ennstaler Alpen, Seetaler Alpen, Eisenerzer Alpen



possible at any time of day or night in all aspects up to 2400 m



Very isolated not yet settled snowdrifts at high altitudes, glide-snow avalanches in steep terrain

Isolated danger zones for trigger-prone snowdrift accumulations occur in shady terrain above 2300 m, esp. on east-facing steep slopes caution is urged, large additional loading can trigger small-to-medium slab avalanches. In addition, on steep slopes in all aspects naturally triggered glide-snow and wet-snow avalanches can be expected. Open glide cracks are indicators of imminent danger.

Snowpack structure

Due to starkly rising temperatures and solar radiation from Friday, the fresh snow that fell at the beginning of the week has settled by and large. The evident weak layers have dissolved except on high-altitude shady slopes. The minor precipitation on Saturday was rain below 2000 m, the fresh snow was moist, thus not prone to transport. On sunny slopes the snowpack is mostly isotherm and moist, the surfaces could form a melt-freeze crust due to lower temperatures on Sunday. On shady slopes there are still reserves of cold at high altitudes. The snowpack in steep terrain on smooth ground glides away up to high altitudes. An area-wide snowpack exists only above the treeline.

Weather

In the wake of a minor cold front, high-pressure conditions will move in. Sunday will start with cloud cover, esp. on the northern flank of the Alps, brief rain/snow showers are possible, later on sunnier, and in late afternoon high-altitude clouds moving in from the west. Light winds. At 2000 m: -1 degree; at 1500 m: +4 degrees.

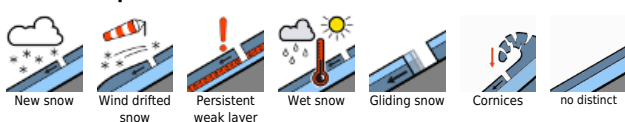
On Monday the next perturbation will arrive in the north, heavy clouds from the start, followed by light snowfall, snowfall level at 1500 m. Isolated showers could spread to the south. The NW winds will be light-to-moderate, temperatures will drop slightly.

Outlook

Avalanche danger levels are not expected to change significantly. The gliding snow problem will persist.

Translated by Jeffrey McCabe, www.creativtrans.com

Avalanche problems



Danger ratings



Expositions

