







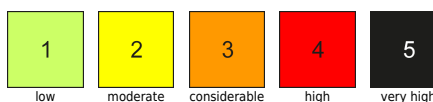
Predominantly moderate avalanche danger, beware naturally-triggered glide-snow avalanches!

	2000 m Murzsteger Alpen, Hochschwabgebiet	
	Koralpe, Stub- und Gleinalpe, Östliche Fischbacher Alpen und Wechselgebiet	
	Schladminger Tauern Nord, Dachsteingebiet, Totes Gebirge, Nördliche Wölzer Tauern, Schladminger Tauern Süd, Gurktaler Alpen, Südliche Wölzer Tauern, Gaaler Alpen, Triebener Tauern, Rottenmanner Tauern, Ennstaler Alpen, Seetaler Alpen, Eisenerzer Alpen	

Avalanche problems



Danger ratings



Expositions



Mürzsteiger Alpen, Hochschwabgebiet



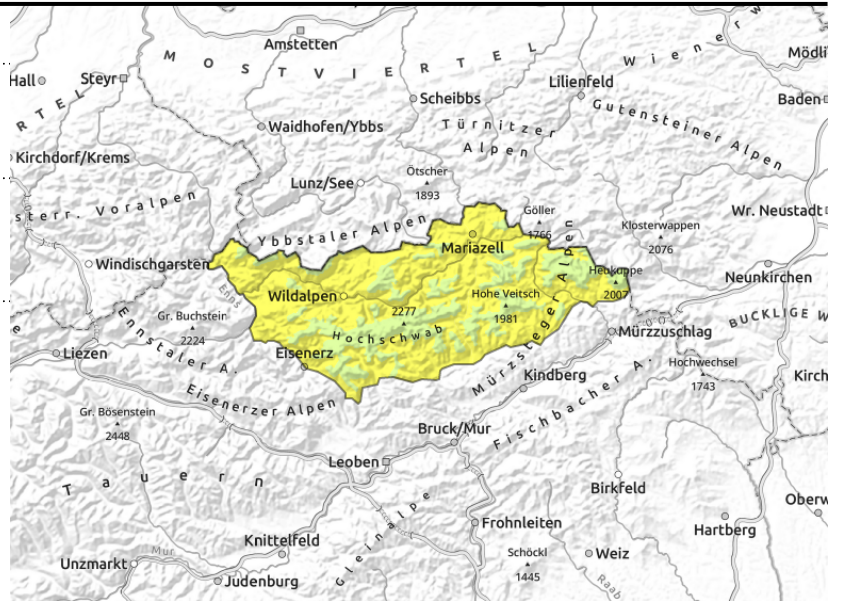
2000 m



in all aspects



small, thin snowdrifts near ridgelines



Naturally triggered glide-snow avalanches in steep terrain

Avalanche danger is moderate in general. On steep slopes in all aspects, naturally triggered glide-snow/wet-snow avalanches can be expected. Open glide cracks are indicators of imminent danger. In addition, at high altitudes in extended east-facing terrain behind discontinuities there are snowdrift accumulations which in places can be triggered by 1 person, releases reaching medium-to-large size.

Snowpack structure

At high altitudes, ridgeline snowdrift accumulations have been generated by minor fresh snow and moderate W/NW winds, often poorly bonded with the snowpack surface. At intermediate and lower altitudes the snowpack is very moist-to-wet due to rain impact, can glide over smooth ground.

Weather

On Monday, minor snow showers will pass through the Northern Alps, clouds will disperse in the interims. The NW winds will be brisk, stronger in NE regions. Dry in the south, sunshine intermittently, winds moderate. At 2000 m: -4 to -2 degrees, cooler than in recent days.

Outlook

On Tuesday the NW airstream will persist, but conditions will be more pleasant. The snowdrift problem will recede, otherwise avalanche danger levels are not expected to change significantly.

Avalanche problems



Danger ratings



Expositions



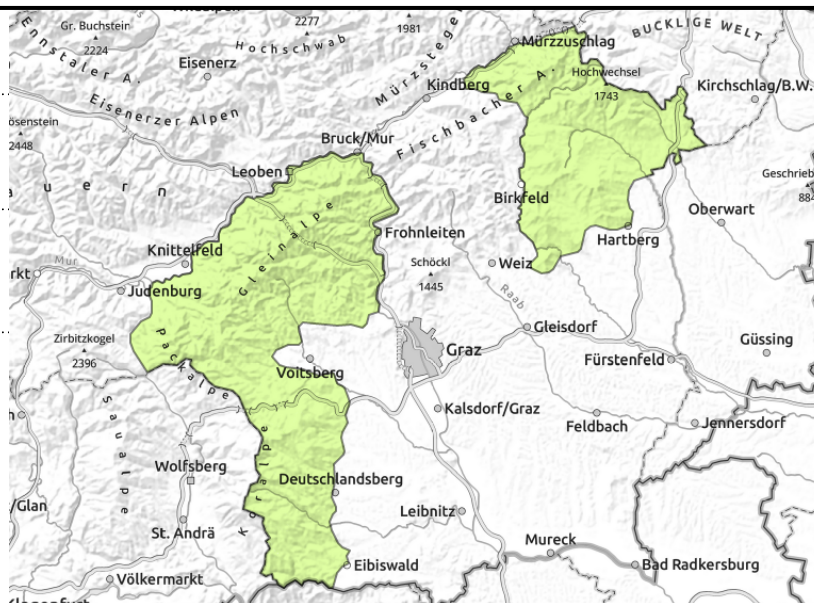
Koralpe, Stub- und Gleinalpe, Östliche Fischbacher Alpen und Wechselgebiet



small, thin snowdrifts at high altitudes



in very isolated cases



Some fresh snowdrifts at high altitudes, isolated glide-snow/wet-snow avalanches in steep terrain

Avalanche danger is generally low. At high altitudes in extended east facing terrain, small snowdrift accumulations which in places can be triggered by 1 person, releases reaching medium-to-large size. On steep slopes in all aspects, naturally triggered glide-snow and wet-snow avalanches can be expected.

Snowpack structure

At high altitudes, ridgeline snowdrift accumulations have been generated by minor fresh snow and moderate W/NW winds, often poorly bonded with the snowpack surface. At intermediate and lower altitudes the snowpack is very moist-to-wet due to rain impact, can glide over smooth ground.

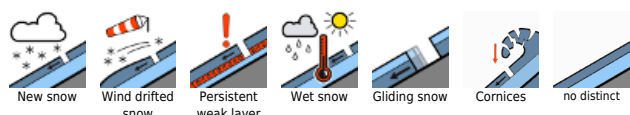
Weather

On Monday, minor snow showers will pass through the Northern Alps, clouds will disperse in the interims. The NW winds will be brisk, stronger in NE regions. Dry in the south, sunshine intermittently, winds moderate. At 2000 m: -4 to -2 degrees, cooler than in recent days.

Outlook

On Tuesday the NW airstream will persist, but conditions will be more pleasant. The snowdrift problem will recede, otherwise avalanche danger levels will remain low.

Avalanche problems



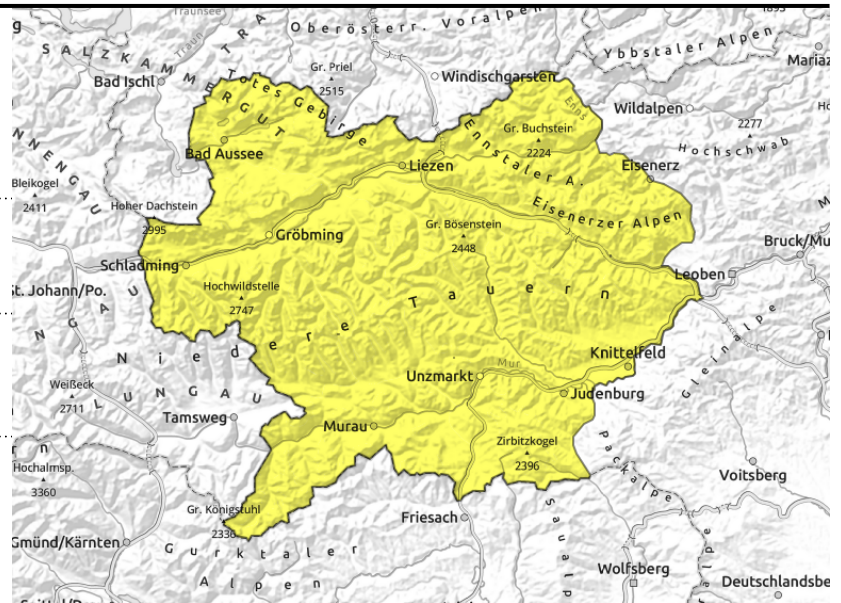
Danger ratings



Expositions



Schladminger Tauern Nord, Dachsteingebiet, Totes Gebirge, Nördliche Wölzer Tauern, Schladminger Tauern Süd, Gurktaler Alpen, Südliche Wölzer Tauern, Gaaler Alpen, Triebener Tauern, Rottenmanner Tauern, Ennstaler Alpen, Seetaler Alpen, Eisenerzer Alpen



near ridges



possible at any time of day or night

Some fresh snowdrifts at high altitudes, isolated glide-snow avalanches in steep terrain

Avalanche danger is moderate. At high altitudes in extended east facing terrain, small snowdrift accumulations which in places can be triggered by 1 person, releases reaching medium-to-large size. On steep slopes in all aspects, naturally triggered glide-snow and wet-snow avalanches can be expected. Open glide cracks are indicators of imminent danger.

Snowpack structure

At high altitudes, ridgeline snowdrift accumulations have been generated by minor fresh snow and moderate W/NW winds, often poorly bonded with the snowpack surface. At intermediate and lower altitudes the snowpack is very moist-to-wet due to rain impact, can glide over smooth ground.

Weather

On Monday, minor snow showers will pass through the Northern Alps, clouds will disperse in the interims. The NW winds will be brisk, stronger in NE regions. Dry in the south, sunshine intermittently, winds moderate. At 2000 m: -4 to -2 degrees, cooler than in recent days.

Outlook

On Tuesday the NW airstream will persist, but conditions will be more pleasant. The snowdrift problem will recede, otherwise avalanche danger levels are not expected to change significantly.

Translated by Jeffrey McCabe, www.creativtrans.com

Avalanche problems



Danger ratings



Expositions

