





## Predominantly moderate avalanche danger, some fresh high-altitude snowdrifts, beware naturally-triggered glide-snow avalanches!

	Seetaler Alpen, Mürztoger Alpen, Gaaler Alpen, Gurktaler Alpen, Südliche Wölzer Tauern, Triebener Tauern, Eisenerzer Alpen, Hochschwabgebiet, Schladminger Tauern Süd, Rottenmanner Tauern, Nördliche Wölzer Tauern, Schladminger Tauern Nord, Ennstaler Alpen, Totes Gebirge, Dachsteingebiet	
	Koralpe, Stub- und Gleinalpe, Östliche Fischbacher Alpen und Wechselgebiet	

### Avalanche problems



### Danger ratings



### Expositions



Seetaler Alpen, Mürzsteger Alpen, Gaaler Alpen, Gurktaler Alpen, Südliche Wölzer Tauern, Triebener Tauern, Eisenerzer Alpen, Hochschwabgebiet, Schladminger Tauern Süd, Rottenmanner Tauern, Nördliche Wölzer Tauern, Schladminger Tauern Nord, Ennstaler Alpen, Totes Gebirge, Dachsteingebiet



near ridgelines



possible at any time of day or night

## Fresh snowdrifts at high altitudes, glide-snow avalanches in steep terrain

Avalanche danger is moderate in general, at high altitudes in extended east-facing terrain behind discontinuities there are snowdrift accumulations which in places can be triggered by 1 person, releases reaching medium-to-large size. On steep slopes in all aspects, naturally triggered glide-snow and wet-snow avalanches can be expected. Glide cracks are indicators of imminent danger.

### Snowpack structure

At high altitudes the fresh snow (up to 15 cm) plus brisk W/NW winds will generate fresh snowdrift accumulations, often poorly bonded with the snowpack surface. Otherwise the snowpack surface above 2000 m is often hard and icy. At intermediate and lower altitudes the snowpack is very moist-to-wet due to rain impact, can glide over smooth ground. The slopes at intermediate and lower altitudes are becoming bare of snow.

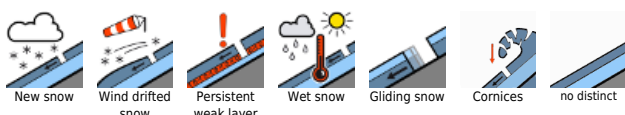
### Weather

Sunday will bring gray skies to Styria, the peaks often veiled in fog. Rainfall/snowfall is expected, possibly heavy in the morning, snowfall level dropping from 1800 down to 1300 m in the north and 1500 m in the south during the course of the day. In afternoon, precipitation will slacken off. At 2000 m: in the north and west from +2 to -4 degrees; in the south and east from 0 to -3 degrees. Brisk W/NW winds.

### Outlook

In the Northern Alps a few snow showers will pass through on Monday, thereafter clouds will disperse. Dry in southern regions. The snowdrift problem will recede, gliding snow activity will persist.

#### Avalanche problems



#### Danger ratings



#### Expositions



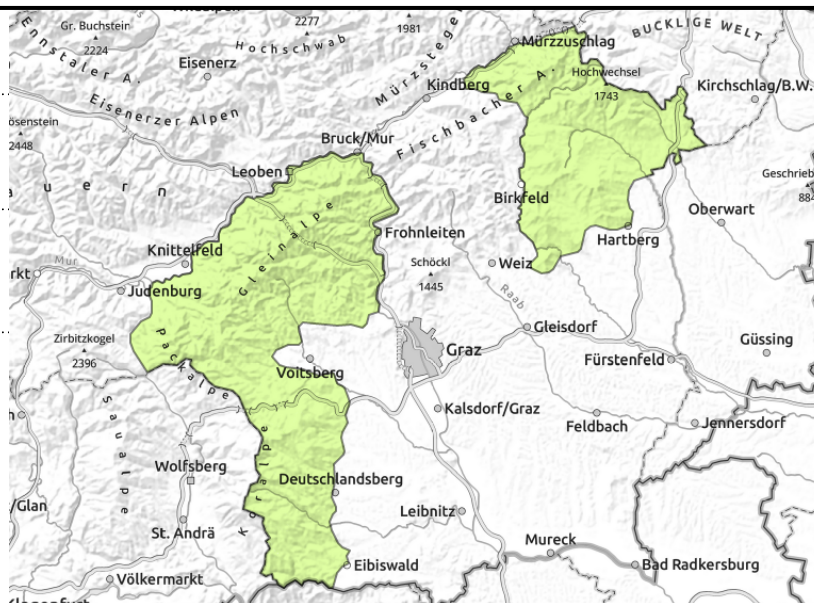
**Koralpe, Stub- und Gleinalpe, Östliche Fischbacher Alpen und Wechselgebiet**



small, thin snowdrifts at high altitudes



in very isolated cases



**Some fresh snowdrifts at high altitudes, isolated glide-snow/wet-snow avalanches in steep terrain**

Avalanche danger is generally low. At high altitudes in extended east facing terrain, small snowdrift accumulations which in places can be triggered by 1 person, releases reaching medium-to-large size. On steep slopes in all aspects, naturally triggered glide-snow and wet-snow avalanches can be expected.

**Snowpack structure**

At high altitudes the fresh snow plus brisk W/NW winds will generate fresh snowdrift accumulations, often poorly bonded with the snowpack surface. Otherwise the snowpack surface above 2000 m is often hard and icy. At intermediate and lower altitudes the snowpack is very moist-to-wet due to rain impact, can glide over smooth ground. The slopes at intermediate and lower altitudes are becoming bare of snow.

**Weather**

Sunday will bring gray skies to Styria, the peaks often veiled in fog. Rainfall/snowfall is expected, possibly heavy in the morning, snowfall level dropping from 1800 down to 1300 m in the north and 1500 m in the south during the course of the day. In afternoon, precipitation will slacken off. At 2000 m: in the north and west from +2 to -4 degrees; in the south and east from 0 to -3 degrees. Brisk W/NW winds.

**Outlook**

On Monday, improved weather conditions, slightly cooler. Avalanche danger will remain low.

Translated by Jeffrey McCabe, [www.creativtrans.com](http://www.creativtrans.com)

**Avalanche problems**



**Danger ratings**



**Expositions**

