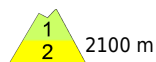
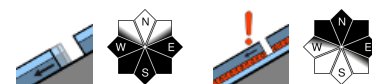


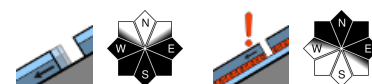
Predominantly moderate avalanche danger, beware naturally-triggered glide-snow avalanches!



Seetaler Alpen, Mürzsteger Alpen, Gaaler Alpen, Gurktaler Alpen, Südliche Wölzer Tauern, Triebener Tauern, Eisenerzer Alpen, Hochschwabgebiet, Schladminger Tauern Süd, Rottenmanner Tauern, Nördliche Wölzer Tauern, Schladminger Tauern Nord, Ennstaler Alpen, Totes Gebirge, Dachsteingebiet



Stub- und Gleinalpe, Koralpe



Avalanche problems



Danger ratings



Expositions



Seetaler Alpen, Mürzsteger Alpen, Gaaler Alpen, Gurktaler Alpen, Südliche Wölzer Tauern, Triebener Tauern, Eisenerzer Alpen, Hochschwabgebiet, Schladminger Tauern Süd, Rottenmanner Tauern, Nördliche Wölzer Tauern, Schladminger Tauern Nord, Ennstaler Alpen, Totes Gebirge, Dachsteingebiet



2100 m



on steep grass-covered slopes



in isolated cases, in shady and high-alpine terrain

Glide-snow/wet-snow avalanches in steep terrain plus minor persistent weak layer at high altitudes

Above 2100 m avalanche danger is moderate. On steep slopes in extended southern aspects, naturally triggered glide-snow/wet-snow avalanches can be expected to trigger in places. Above 2000 m, isolated slab avalanches can be triggered by large additional loading in shady steep gullies, reaching medium size (persistent weak layer). In the southern ranges isolated fresh instable snowpack patches on north-facing slopes require special caution, they can unleash small slab avalanches. Danger of falling outweighs that of being buried in snow.

Snowpack structure

Older snowdrifts have been able to settle further due to higher temperatures, only on shady high-altitude shady slopes are the weak layers still prone to triggering. Small drifts have accumulated in the southern ranges at high altitudes, these can be instable for a brief period. Otherwise the snowpack surface above 2000 m is often hard and icy, at intermediate altitudes it is mostly moist-to-wet and glides over smooth ground. The slopes at intermediate and lower altitudes are becoming bare of snow.

Weather

The SW airstream will continue on Saturday, minor snowfall is expected at high altitudes in the southern ranges, snowfall level at 1600 m. Winds in the rimline ranges and eastern ranges will be strong, in the western ranges brisk, from S/SW directions. At 2000 m: 0 to +2 degrees.

Outlook

On Sunday skies will be predominantly overcast, peaks will be shrouded in fog. From the south, light to moderate precipitation will set in and spread throughout the mountains, snowfall level descending during the day from 1900 down to 1300 m. Slight snowdrift problem at high altitudes.

Avalanche problems



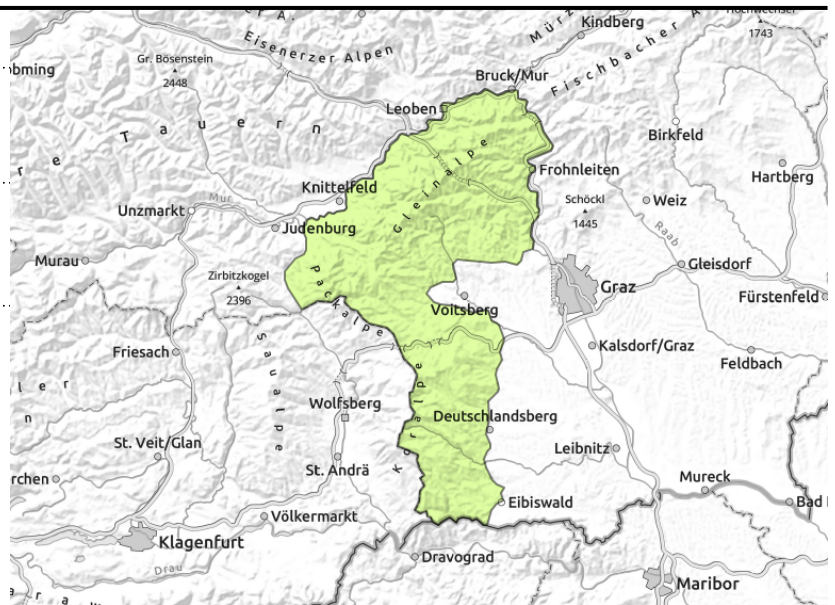
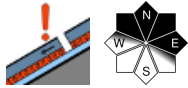
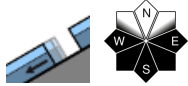
Danger ratings



Expositions



Stub- und Gleinalpe, Koralpe



Glide-snow/wet-snow avalanches in steep terrain plus minor persistent weak layer at high-alpine altitudes

Avalanche danger is generally low. On steep slopes in extended southern aspects, isolated naturally triggered glide-snow/wet-snow avalanches can be expected to trigger in places. Above 2000 m, isolated slab avalanches can be triggered by large additional loading in transitions into steep gullies, reaching medium size (persistent weak layer). In the southern ranges isolated fresh instable snowpack patches on north-facing slopes require special caution, they can unleash small slab avalanches. Danger of falling outweighs that of being buried in snow.

Snowpack structure

Older snowdrifts have been able to settle further due to higher temperatures, only on shady high-altitude shady slopes are the weak layers still prone to triggering. Small drifts have accumulated in the southern ranges, these can be instable for a brief period. Otherwise the snowpack surface above 2000 m is often hard and icy, at intermediate altitudes it is mostly moist-to-wet and glides over smooth ground. The slopes at intermediate and lower altitudes are becoming bare of snow.

Weather

The SW airstream will continue on Saturday, minor snowfall is expected at high altitudes in the southern ranges, snowfall level at 1600 m. Winds in the rimline ranges and eastern ranges will be strong, in the western ranges brisk, from S/SW directions. At 2000 m: 0 to +2 degrees.

Outlook

On Sunday skies will be predominantly overcast, peaks will be shrouded in fog. From the south, light to moderate precipitation will set in and spread throughout the mountains, snowfall level descending during the day from 1900 down to 1300 m. Slight snowdrift problem at high altitudes.

Translated by Jeffrey McCabe, www.creativtrans.com

Avalanche problems



Danger ratings



Expositions

