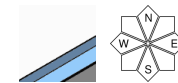


## Fresh snowdrift accumulations

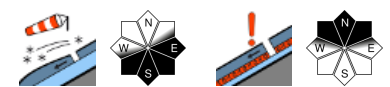


Mürztaler Alpen, Westliche Fischbacher Alpen und Grazer Bergland, Östliche Fischbacher Alpen und Wechselgebiet, Stub- und Gleinalpe, Korralpe, Seetaler Alpen, Mürzsteiger Alpen, Gaaler Alpen, Gurktaler Alpen, Südliche Wölzer Tauern, Triebener Tauern, Eisenerzer Alpen, Hochschwabgebiet, Schladminger Tauern Süd, Rottenmanner Tauern, Nördliche Wölzer Tauern, Schladminger Tauern Nord, Ennstaler Alpen

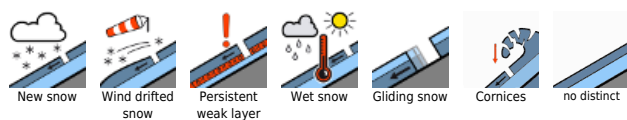


2000 m

Dachsteingebiet, Totes Gebirge



### Avalanche problems



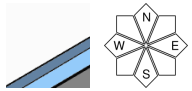
### Danger ratings



### Expositions



Mürztaler Alpen, Westliche Fischbacher Alpen und Grazer Bergland, Östliche Fischbacher Alpen und Wechselgebiet, Stub- und Gleinalpe, Koralpe, Seetaler Alpen, Müzsteger Alpen, Gaaler Alpen, Gurktaler Alpen, Südliche Wölzer Tauern, Triebener Tauern, Eisenerzer Alpen, Hochschwabgebiet, Schladminger Tauern Süd, Rottenmanner Tauern, Nördliche Wölzer Tauern, Schladminger Tauern Nord, Ennstaler Alpen



small/thin drifted masses

## Low avalanche danger, but danger of falling

Avalanche danger is generally low. On high-altitude east-facing slopes there are isolated snowdrift patches. Isolated wet slides possible in Gurktal and Seetal Alps.

### Snowpack structure

In Niedere Tauern and Hochschwab region, 5 cm of fresh snow was registered. It was transported by winds and now lies deposited on E/S facing slopes. At high altitudes it is hard and icy. In Niedere Tauern and Hochschwab region, expansive metamorphosis is weakening the snowpack layering on steep shady slopes. The snow at intermediate altitudes is moist-to-wet.

### Weather

In northern and western regions of Upper Styria, some clouds. In the Dachstein region, light snowfall is possible above 1200 m. Elsewhere, intermittent sunshine and dry. In the afternoon cloud cover will become heavier also on the northern flank of the Alps. The W/NW winds will be brisk to strong. At 2000 m: -5 degrees.

### Outlook

In the NE regions from Hochschwab to Rax morning skies can be overcast or foggy. Elsewhere mostly sunshine from the start. The W/NW winds will be stormy (70-110 km/hr) At 2000 m: -1 degree. Avalanche danger levels are not expected to change significantly.

#### Avalanche problems



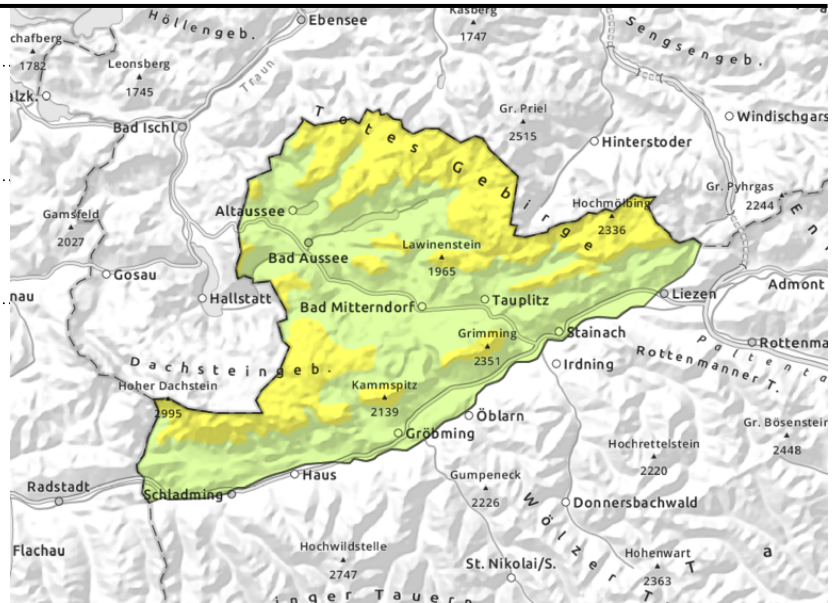
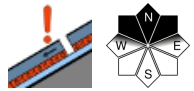
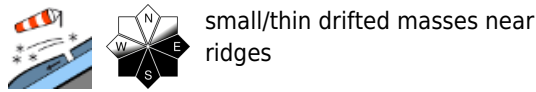
#### Danger ratings



#### Expositions



**Dachsteingebiet, Totes Gebirge**



**Moderate avalanche danger at high altitudes. Beware: acute danger of falling on hard, icy snowpack surfaces!**

Avalanche danger above 2000 m is moderate. Main problem: thin, fresh snowdrift accumulations. The few danger zones in backcountry touring terrain lie at summit level, behind discontinuities and on leeward slopes, esp. on E/S facing slopes. Isolated wet loose-snow avalanches and glide-snow avalanches are possible.

**Snowpack structure**

In the Dachstein region and Totes Gebirge, 20 cm of fresh snow was registered which was transported by often storm-strength winds. The snowdrifts were deposited atop surface hoar or a hard layer, bonding to the surface is not good. Elsewhere the snowpack is hard and icy. At intermediate altitudes it is moist-to-wet. On shady steep slopes at high altitudes the expansive metamorphosis weakens the fundament.

**Weather**

In northern and western regions of Upper Styria, some clouds. In the Dachstein region, light snowfall is possible above 1200 m. Elsewhere, intermittent sunshine and dry. In the afternoon cloud cover will become heavier also on the northern flank of the Alps. The W/NW winds will be brisk to strong. At 2000 m: -5 degrees.

**Outlook**

In the NE regions from Hochschwab to Rax morning skies can be overcast or foggy. Elsewhere mostly sunshine from the start. The W/NW winds will be stormy (70-110 km/hr) At 2000 m: -1 degree. Avalanche danger levels are not expected to change significantly.

Translated by Jeffrey McCabe, [www.creativtrans.com](http://www.creativtrans.com)

**Avalanche problems**



**Danger ratings**



**Expositions**

