

Daytime danger cycle. Caution: high-altitude snowpack hard and icy.



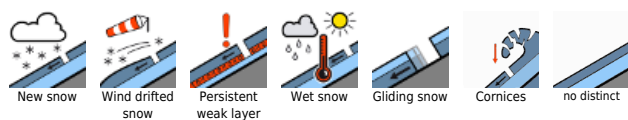
Mürztaler Alpen, Westliche Fischbacher Alpen und Grazer Bergland, Östliche Fischbacher Alpen und Wechselgebiet, Stub- und Gleinalpe, Korralpe, Seetaler Alpen, Mürzsteger Alpen, Gaaler Alpen, Gurktaler Alpen



Nördliche Wölzer Tauern, Schladminger Tauern Nord, Dachsteingebiet, Totes Gebirge, Rottenmanner Tauern, Ennstaler Alpen, Hochschwabgebiet, Eisenerzer Alpen, Triebener Tauern, Südliche Wölzer Tauern, Schladminger Tauern Süd



Avalanche problems

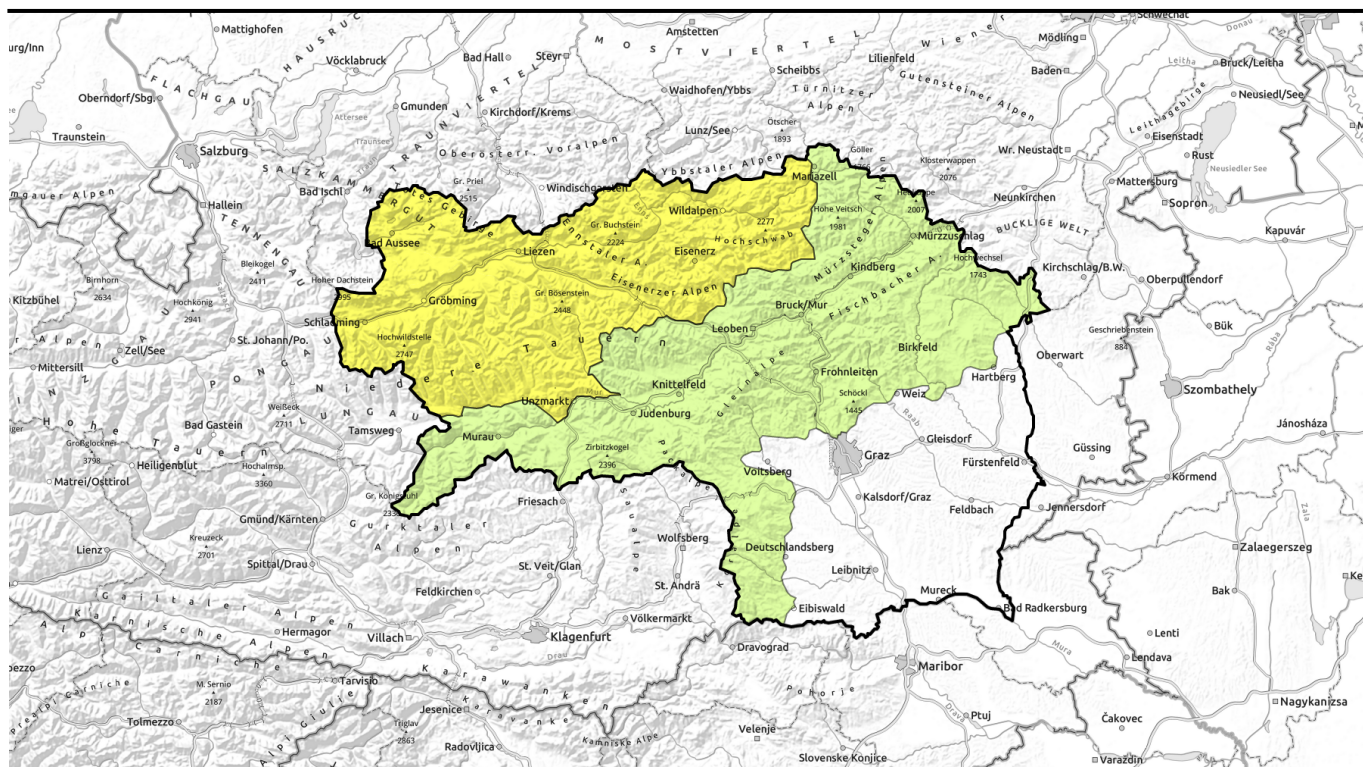


Danger ratings



Expositions

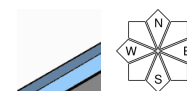




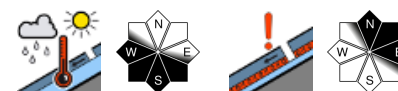
Tagesgang der Lawinengefahr beachten - Vorsicht in den Hochlagen die Schneedecke ist hart und eisig!



Mürztaler Alpen, Westliche Fischbacher Alpen und Grazer Bergland, Östliche Fischbacher Alpen und Wechselgebiet, Stub- und Gleinalpe, Koralpe, Seetaler Alpen, Mürzsteiger Alpen, Gaaler Alpen, Gurktaler Alpen



Nördliche Wölzer Tauern, Schladminger Tauern Nord, Dachsteingebiet, Totes Gebirge, Rottenmanner Tauern, Ennstaler Alpen, Hochschwabgebiet, Eisenerzer Alpen, Triebener Tauern, Südliche Wölzer Tauern, Schladminger Tauern Süd



Avalanche problems



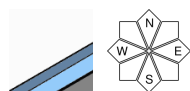
Danger ratings



Expositions



Mürztaler Alpen, Westliche Fischbacher Alpen und Grazer Bergland, Östliche Fischbacher Alpen und Wechselgebiet, Stub- und Gleinalpe, Koralpe, Seetaler Alpen, Mürzsteiger Alpen, Gaaler Alpen, Gurktaler Alpen



small/thin drifted masses

Low avalanche danger, but danger of falling

Avalanche danger is generally low. On high-altitude east-facing slopes there are snowdrift patches. Due to solar radiation, wet slides are possible on south-facing slopes.

Snowpack structure

Older snowdrift accumulations on east-facing slopes at high altitudes are poorly bonded with the surface. Due to warmth and subsequent cooling the snowpack was able to consolidate. Due to solar radiation the snowpack swiftly forfeits its firmness, becomes moist-to-wet.

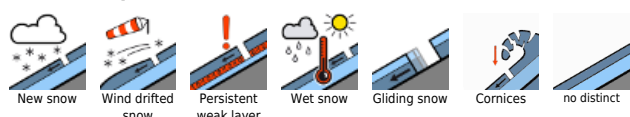
Weather

Perfect mountain weather on Tuesday. Sunny and mild. Light SW winds. At 2000 m: +4 to +7 degrees.

Outlook

The airstream will shift to northwesterly, cooler air masses will gradually move in. Heavy clouds will repeatedly appear, sunshine not be unhampered. Cooler. Avalanche danger levels are not expected to change significantly.

Avalanche problems



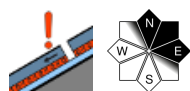
Danger ratings



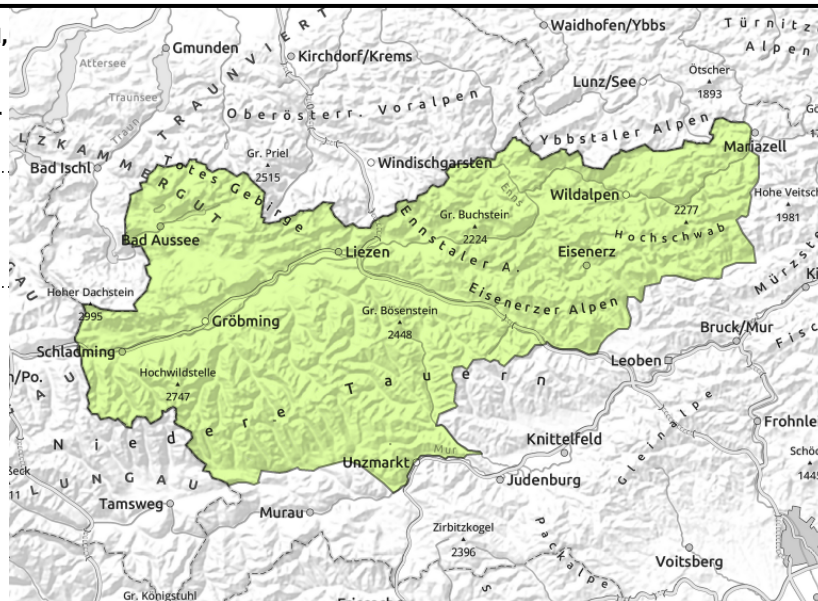
Expositions



Nördliche Wölzer Tauern, Schladminger Tauern Nord, Dachsteingebiet, Totes Gebirge, Rottenmanner Tauern, Ennstaler Alpen, Hochschwabgebiet, Eisenerzer Alpen, Triebener Tauern, Südliche Wölzer Tauern, Schladminger Tauern Süd



above 2000 m



Persistent-weak-layer problem on E/N facing slopes. Mild nocturnal temperatures.

Avalanche danger is subject to a daytime cycle, in the morning low, in the afternoon moderate. Above 2000 m older drifts can be triggered by large additional loading. The few danger zones occur at summit level behind discontinuities and on leeward slopes (also distant from ridges). In addition, isolated gliding snow activity and glide-snow avalanches can't be excluded. Due to higher temperatures and solar radiation, naturally triggered loose-snow avalanches are possible on extremely steep rough and rocky slopes, esp. south-facing slopes.

Snowpack structure

Where the snowpack is moist-to-wet, a thin melt-freeze crust forms at night, then swiftly forfeits its firmness during the daytime hours. Old drifts lie deposited atop a hard layer at high altitudes or atop faceted crystals. The fundament is stable. Leeward slopes are currently without snow. Where the snowpack surface is hard and icy, the situation will persist.

Weather

Perfect mountain weather on Tuesday. Sunny and mild. Light SW winds. At 2000 m: +4 to +7 degrees.

Outlook

The airstream will shift to northwesterly, cooler air masses will gradually move in. Heavy clouds will repeatedly appear, sunshine not be unhampered. Cooler. Avalanche danger levels are not expected to change significantly.

Avalanche problems



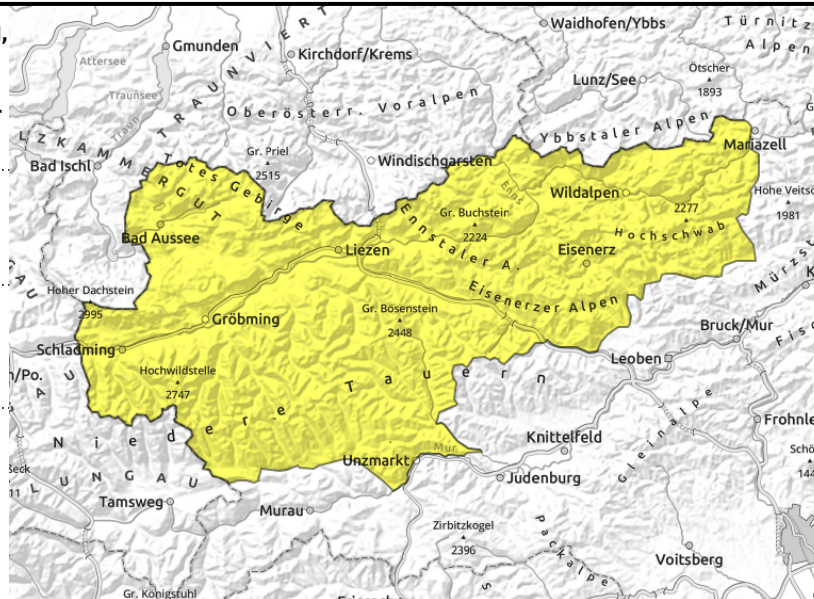
Danger ratings



Expositions



Nördliche Wölzer Tauern, Schladminger Tauern Nord, Dachsteingebiet, Totes Gebirge, Rottenmanner Tauern, Ennstaler Alpen, Hochschwabgebiet, Eisenerzer Alpen, Triebener Tauern, Südliche Wölzer Tauern, Schladminger Tauern Süd



daytime danger cycle of naturally triggered avalanches



above 2000 m

Persistent-weak-layer problem on E/N facing slopes. Mild nocturnal temperatures.

Avalanche danger is subject to a daytime cycle, in the morning low, in the afternoon moderate. Above 2000 m older drifts can be triggered by large additional loading. The few danger zones occur at summit level behind discontinuities and on leeward slopes (also distant from ridges). In addition, isolated gliding snow activity and glide-snow avalanches can't be excluded. Due to higher temperatures and solar radiation, naturally triggered loose-snow avalanches are possible on extremely steep rough and rocky slopes, esp. south-facing slopes.

Snowpack structure

Where the snowpack is moist-to-wet, a thin melt-freeze crust forms at night, then swiftly forfeits its firmness during the daytime hours. Old drifts lie deposited atop a hard layer at high altitudes or atop faceted crystals. The fundament is stable. Leeward slopes are currently without snow. Where the snowpack surface is hard and icy, the situation will persist.

Weather

Perfect mountain weather on Tuesday. Sunny and mild. Light SW winds. At 2000 m: +4 to +7 degrees.

Outlook

The airstream will shift to northwesterly, cooler air masses will gradually move in. Heavy clouds will repeatedly appear, sunshine not be unhampered. Cooler. Avalanche danger levels are not expected to change significantly.

Translated by Jeffrey McCabe, www.creativtrans.com

Avalanche problems



Danger ratings



Expositions

