
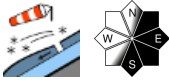






High wind velocities - fresh snowdrifts at high altitudes

	<p>Mürztaler Alpen, Westliche Fischbacher Alpen und Grazer Bergland, Östliche Fischbacher Alpen und Wechselgebiet, Stub- und Gleinalpe, Korralpe, Seetaler Alpen</p>	
	<p>forestline Hochschwabgebiet, Eisenerzer Alpen, Triebener Tauern, Gaaler Alpen, Mürzsteger Alpen, Südliche Wölzer Tauern, Gurktaler Alpen, Ennstaler Alpen, Rottenmann Tauern, Nördliche Wölzer Tauern</p>	
	<p>forestline Dachsteingebiet, Totes Gebirge, Schladminger Tauern Nord, Schladminger Tauern Süd</p>	

Avalanche problems



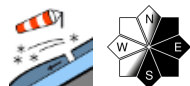
Danger ratings



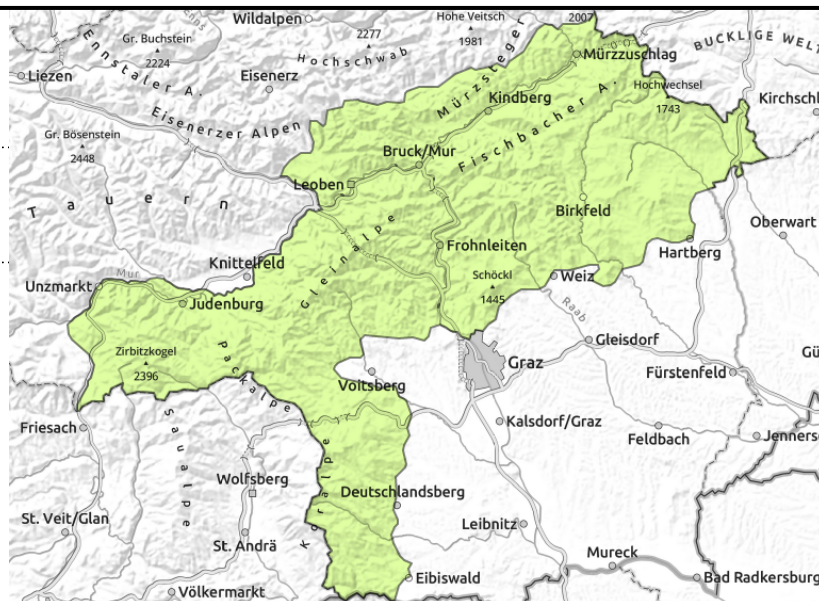
Expositions



Mürztaler Alpen, Westliche Fischbacher Alpen und Grazer Bergland, Östliche Fischbacher Alpen und Wechselgebiet, Stub- und Gleinalpe, Korralpe, Seetaler Alpen



small/thin drifted masses



Low avalanche danger, beware small snowdrift patches at high altitudes

Avalanche danger is generally low. Main danger: snowdrifts. On high altitude east-facing slopes, isolated danger zones caused by snowdrifts.

Snowpack structure

Due to small amounts of fresh fallen snow and storm-strength NW winds, isolated snowdrift accumulations have been generated on east-facing slopes which at high altitudes are often poorly bonded with the surface. On Korralpe and in the Wechsel region, not much fresh snow. At lower altitudes, a melt-freeze crust is forming. The fundament is still stable.

Weather

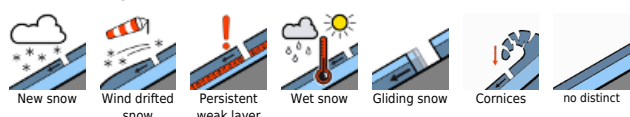
The southern mountain ranges are better off, esp. the Murberg mountains as far as Korralpe will have a very sunny day. Winds will slacken off temporarily. At 2000 m: 0 degrees.

In the evening, the next perturbation from the north will arrive. Westerly winds will intensify, some showers can be expected, snowfall level dropping to 1000 m by morning.

Outlook

On Saturday in the northern Upper Styrian regions, residual clouds and rainfall, clouds soon dispersing and sunshine following with cloudless skies. Avalanche danger levels will increase slightly.

Avalanche problems



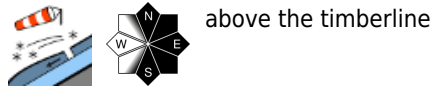
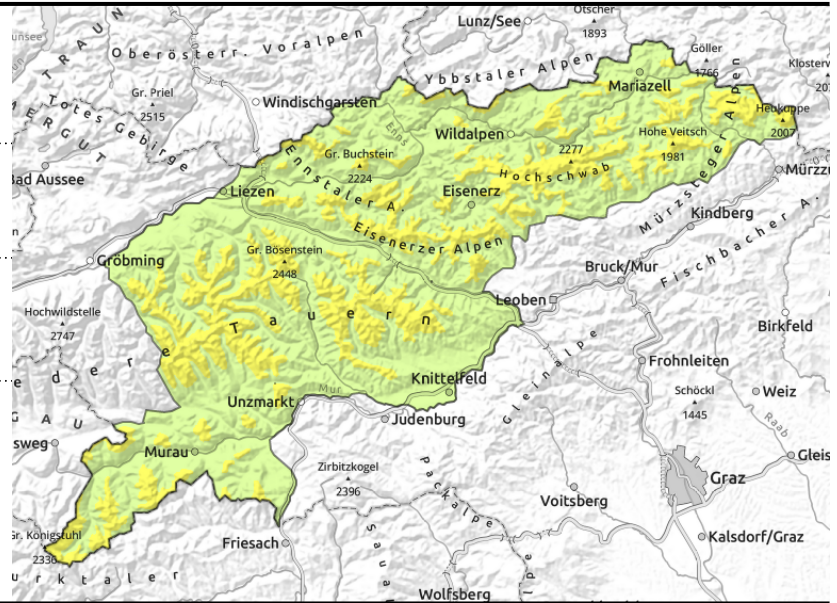
Danger ratings



Expositions



Hochschwabgebiet, Eisenerzer Alpen, Triebener Tauern, Gaaler Alpen, Mürzsteger Alpen, Südliche Wölzer Tauern, Gurktaler Alpen, Ennstaler Alpen, Rottenmanner Tauern, Nördliche Wölzer Tauern



Snowdrift problem: fresh snow + strong winds

Avalanche danger above the treeline is moderate, at low altitudes danger is low. Danger zones are the snowdrift accumulations in extended eastern aspects where in some places behind discontinuities and on leeward slopes (also distant from ridges) slab avalanches can be triggered by one person. Windblown exposed surfaces are often hard and icy, acute danger of falling. In addition, isolated gliding snow activity and glide-snow avalanches can't be excluded.

Snowpack structure

In the last 24 hours there has been 10-15 cm of fresh snow between Gurktal Alps, Eisernerz Alps and Hochschwab region, accompanied by storm-strength NW winds. Above the treeline in extended eastern aspects fresh snowdrifts have been generated, bonding is poor with ascending altitude. In Niedere Tauern, rainfall up to 1800 m, water seepage channels have formed. At low and intermediate altitudes the moistened snow has settled, a melt-freeze crust has formed. The fundament is still stable. On sunny slopes the snowpack is moist down to the ground and glides over smooth terrain.

Weather

North of the Main Alpine Ridge, the peaks are often shrouded in fog and heavy cloud, visibility is much reduced. Sleet and snowfall will be unusual, snowfall level around 1300 m. The southern mountain ranges are better off, esp. the Murberg mountains as far as Koralpe will have a very sunny day. Winds will slacken off temporarily. At 2000 m: 0 degrees.

In the evening, the next perturbation from the north will arrive. Westerly winds will intensify, some showers can be expected, snowfall level dropping to 1000 m by morning.

Outlook

On Saturday in the northern Upper Styrian regions, residual clouds and rainfall, clouds soon dispersing and sunshine following with cloudless skies.

Avalanche problems



Danger ratings



Expositions



Dachsteingebiet, Totes Gebirge, Schladminger Tauern Nord, Schladminger Tauern Süd



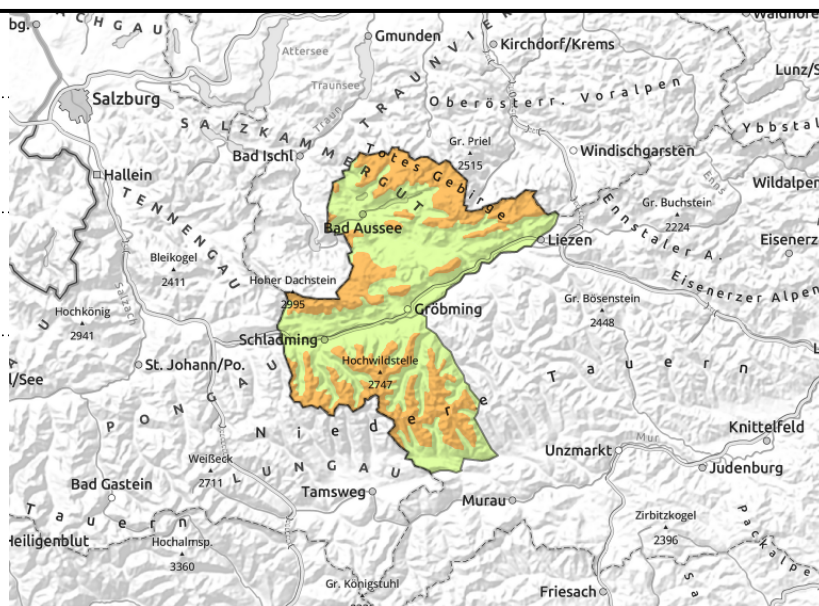
forestline



above the treeline



in very isolated cases



Fresh snowdrifts creating considerable avalanche danger above the treeline

Avalanche danger above the treeline is considerable, at low altitudes danger is low. Main danger: snowdrift accumulations. Danger zones in extended east-facing terrain, where slab avalanches can be triggered by one person. Windblown exposed surfaces are often hard and icy, acute danger of falling. Below 1800 m in all aspects, small-to-medium naturally triggered avalanches can be expected which can place exposed transportation routes at risk. In addition, isolated gliding snow activity and glide-snow avalanches can't be excluded.

Snowpack structure

In Schladming Tauern and Dachstein region and Totes Gebirge, up to 30 cm of fresh snow was registered accompanied by storm-strength NW winds. Winds have transported the snow above the treeline. Bonding or fresh drifts to the surface is poor with ascending altitude. At lower altitudes the snow from yesterday is settling, forming a melt-freeze crust. The fundament is stable. On sunny slopes the snowpack is moist and glides over smooth ground.

Weather

North of the Main Alpine Ridge, the peaks are often shrouded in fog and heavy cloud, visibility is much reduced. Sleet and snowfall will be unusual, snowfall level around 1300 m. The southern mountain ranges are better off, esp. the Murberg mountains as far as Koralpe will have a very sunny day. Winds will slacken off temporarily. At 2000 m: 0 degrees.

In the evening, the next perturbation from the north will arrive. Westerly winds will intensify, some showers can be expected, snowfall level dropping to 1000 m by morning.

Outlook

On Saturday in the northern Upper Styrian regions, residual clouds and rainfall, clouds soon dispersing and sunshine following with cloudless skies. Avalanche danger levels will decrease gradually.

Translated by Jeffrey McCabe, www.creativtrans.com

Avalanche problems



Danger ratings



Expositions

