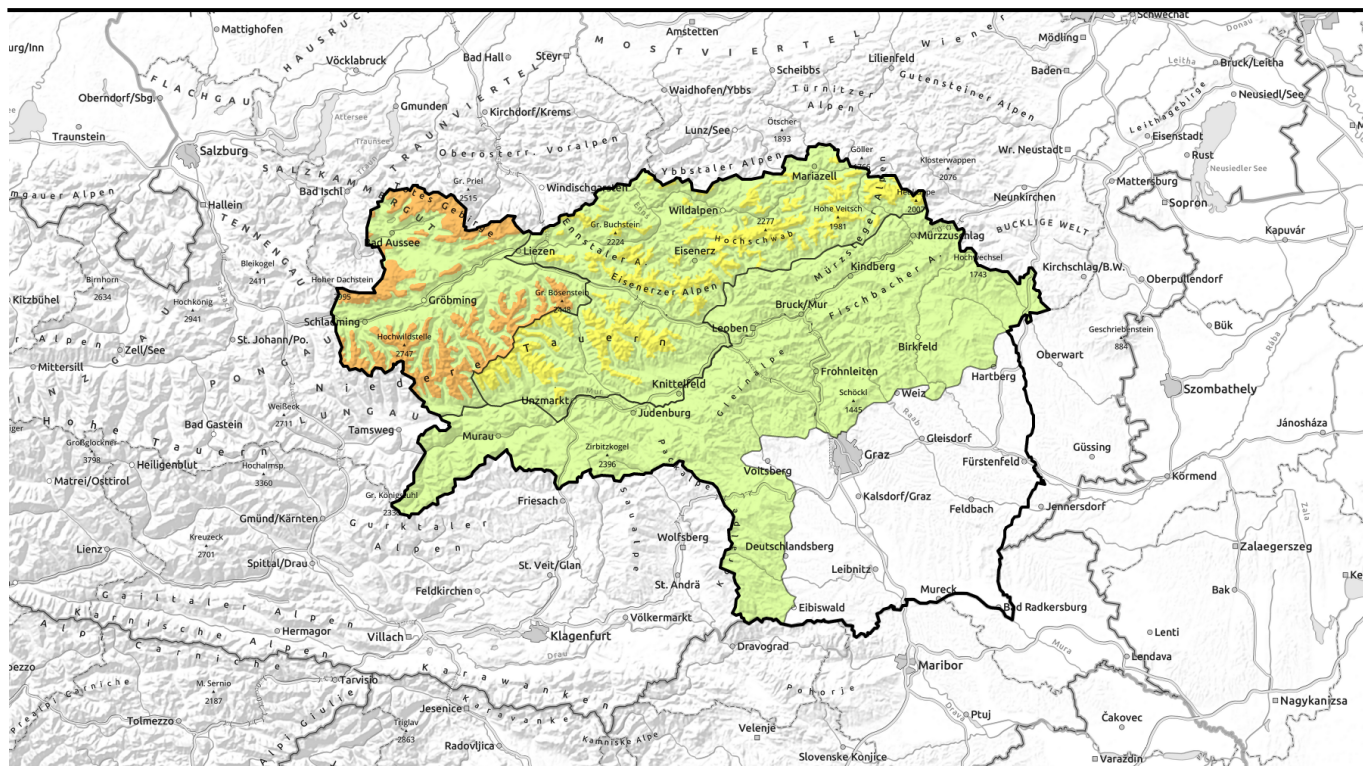















valid until: **Thursday, 25.01.2024, 18:00 h**



Fresh snowdrifts at high altitudes

	<p>Mürztaler Alpen, Westliche Fischbacher Alpen und Grazer Bergland, Östliche Fischbacher Alpen und Wechselgebiet, Stub- und Gleinalpe, Korralpe, Seetaler Alpen, Gurktaler Alpen</p>					
	<p>forestline</p>	<p>Hochschwabgebiet, Eisenerzer Alpen, Triebener Tauern, Gaaler Alpen, Ennstaler Alpen, Mürzsteger Alpen, Südliche Wölzer Tauern</p>				
	<p>forestline</p>	<p>Dachsteingebiet, Totes Gebirge, Schladminger Tauern Nord, Nördliche Wölzer Tauern, Schladminger Tauern Süd, Rottenmanner Tauern</p>				

Avalanche problems



Danger ratings



Expositions



valid until: **Thursday, 25.01.2024, 18:00 h**

Mürztaler Alpen, Westliche Fischbacher Alpen und Grazer Bergland, Östliche Fischbacher Alpen und Wechselgebiet, Stub- und Gleinalpe, Koralpe, Seetaler Alpen, Gurktaler Alpen



small/thin drifted masses

Low avalanche danger, small snowdrift patches at high altitudes

Avalanche danger is generally low. On high altitude east-facing slopes, isolated danger zones caused by snowdrifts. At lower altitudes, the snowpack is stable.

Snowpack structure

Due to small amounts of fresh fallen snow and storm-strength NW winds, isolated snowdrift accumulations have been generated on east-facing slopes which at high altitudes are often poorly bonded with the surface. At lower altitudes the moistened snow is consolidating, a melt-freeze crust is forming. The fundament is still stable.

Weather

On Wednesday night a cold front will pass thorough, the snowfall level will descend to about 1200 m, NW winds will intensify and snowfall is expected in the northern barrier cloud regions and in Niedere Tauern. South of Niedere Tauern, minor snowfall is expected during the night, the daytime hours will be mostly sunny. At 2000 m: -2 degrees.

Outlook

On Friday the next warm front will pass through bringing gray skies but only minor precipitation. Avalanche danger will remain low.

Avalanche problems



Danger ratings



Expositions



valid until: **Thursday, 25.01.2024, 18:00 h**

Hochschwabgebiet, Eisenerzer Alpen, Triebener Tauern, Gaaler Alpen, Ennstaler Alpen, Mürzsteger Alpen, Südliche Wölzer Tauern



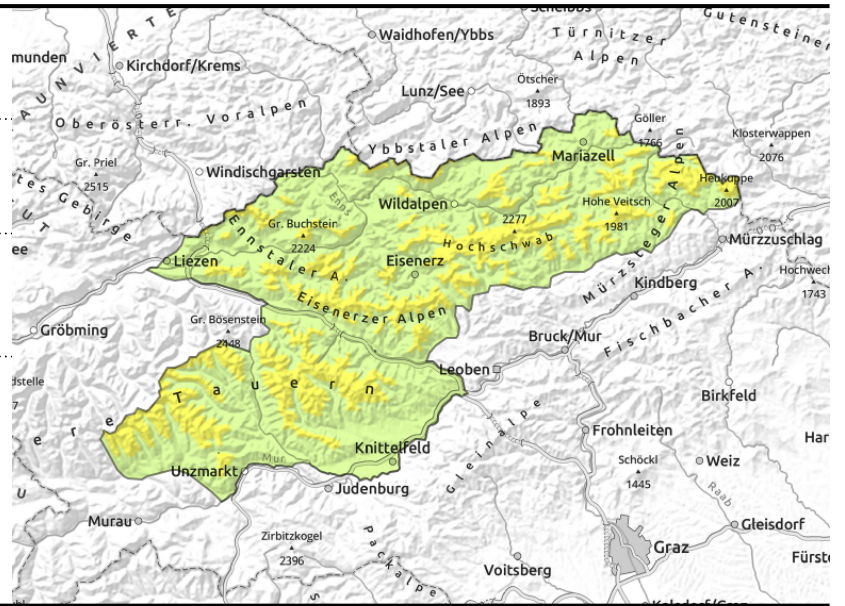
forestline



above the timberline



in very isolated cases



Fresh snowdrifts creating moderate avalanche danger above treeline

Avalanche danger above the treeline is moderate, at low altitudes danger is low. Danger zones are the snowdrift accumulations in extended eastern aspects where in some places behind discontinuities and on leeward slopes (also distant from ridges) slab avalanches can be triggered by one person. Windblown exposed surfaces are often hard and icy, acute danger of falling. In addition, isolated gliding snow activity and glide-snow avalanches can't be excluded. Poor visibility and stormy conditions make assessment of avalanche danger on-site far more difficult.

Snowpack structure

Up to 20 cm of fresh snow and stormy NW winds have transported the snow and generated new snowdrifts. Bonding to the old snowpack deteriorates with ascending altitude. At lower altitudes the moistened snow is consolidating, a melt-freeze crust is forming. The fundament is still stable. On sunny slopes the snowpack is moist down to the ground and glides over smooth terrain.

Weather

On Wednesday night a cold front will pass through, the snowfall level will descend to about 1200 m, NW winds will intensify and snowfall is expected in the northern barrier cloud regions and in Niedere Tauern (focal point: Dachstein region, Totes Gebirge and Schladminger, Wölzer Tauern with up to 30 cm). Poor visibility. Snowfall will taper off during the morning, in the eastern sector of the Northern Alps there will be some sunshine but it will remain stormy. South of Niedere Tauern, minor snowfall is expected during the night, the daytime hours will be mostly sunny. At 2000 m: -2 degrees in the south, -5 degrees in the north.

Outlook

On Friday the next warm front will pass through bringing gray skies but only minor precipitation. The snowdrift problem will recede.

Avalanche problems



Danger ratings

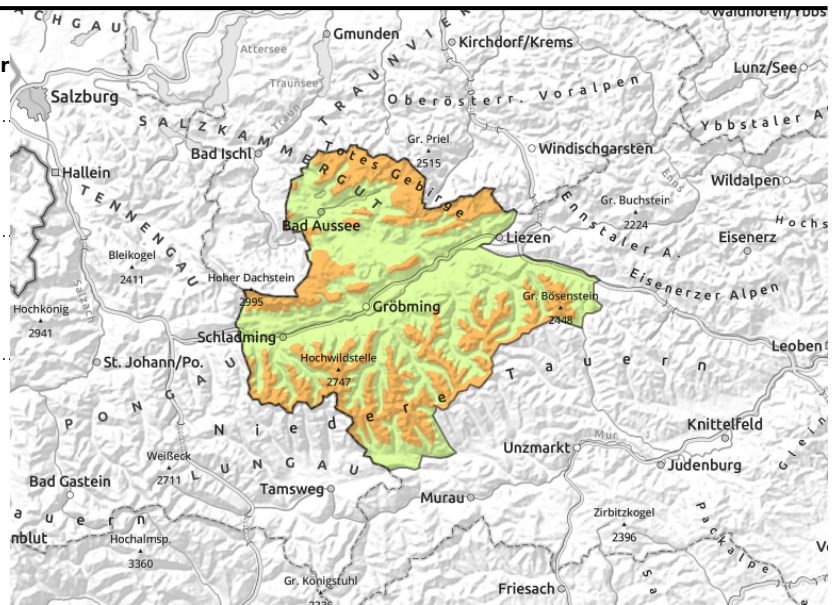
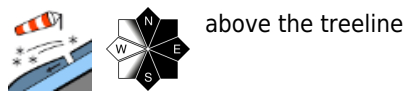


Expositions



valid until: **Thursday, 25.01.2024, 18:00 h**

Dachsteingebiet, Totes Gebirge, Schladminger Tauern Nord, Nördliche Wölzer Tauern, Schladminger Tauern Süd, Rottenmanner Tauern



Fresh snowdrifts creating considerable avalanche danger above the treeline

Avalanche danger above the treeline is considerable, at low altitudes danger is low. Danger zones discontinuities and on leeward slopes (also distant from ridges) slab avalanches can be triggered by one person. Windblown exposed surfaces are often hard and icy, acute danger of falling. In addition, isolated gliding snow activity and glide-snow avalanches can't be excluded. Poor visibility and stormy conditions make assessment of avalanche danger on-site far more difficult. Beware the risks of falling.

Snowpack structure

Up to 30 cm of fresh snow and stormy NW winds have transported the snow and generated new snowdrifts. Bonding to the old snowpack deteriorates with ascending altitude. At lower altitudes the moistened snow is consolidating, a melt-freeze crust is forming. The fundament is still stable. On sunny slopes the snowpack is moist down to the ground and glides over smooth terrain.

Weather

On Wednesday night a cold front will pass thorough, the snowfall level will descend to about 1200 m, NW winds will intensify and snowfall is expected in the northern barrier cloud regions and in Niedere Tauern (focal point: Dachstein region, Totes Gebirge and Schladminger, Wölzer Tauern with up to 30 cm). Poor visibility. Snowfall will taper off during the morning, in the eastern sector of the Northern Alps there will be some sunshine but it will remain stormy. South of Niedere Tauern, minor snowfall is expected during the night, the daytime hours will be mostly sunny. At 2000 m: -2 degrees in the south, -5 degrees in the north.

Outlook

On Friday the next warm front will pass through bringing gray skies but only minor precipitation. The snowdrift problem will recede.

Translated by Jeffrey McCabe, www.creativtrans.com

Avalanche problems



Danger ratings



Expositions

