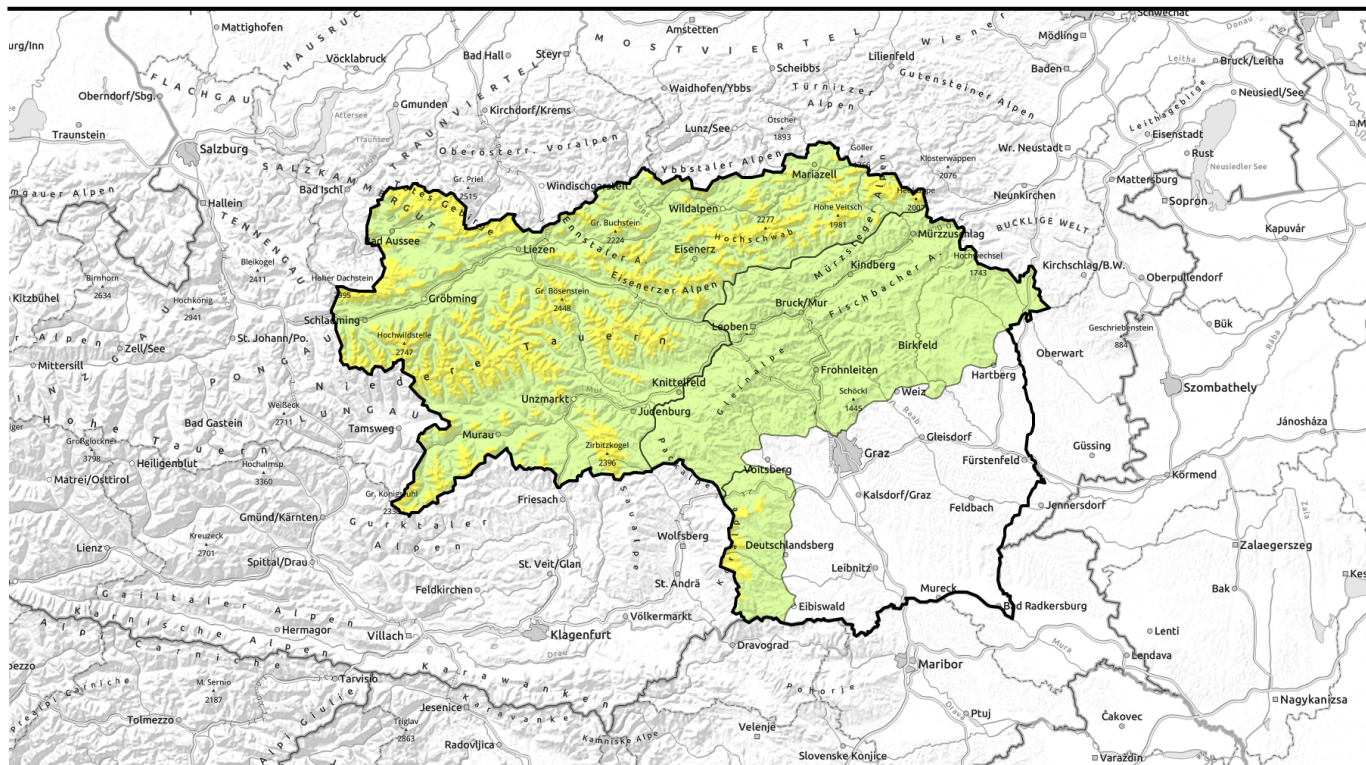



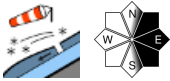

valid for: **Monday, 22.01.2024**



## Older drifts on shady slopes, some glide-snow releases


- 

Mürztal, Westliche Fischbacher Alpen und Grazer Bergland, Östliche Fischbacher Alpen und Wechselgebiet, Stub- und Gleinalpe


- 

forestline

Hochschwabgebiet, Eisenerzer Alpen, Totes Gebirge, Schladminger Tauern Nord, Schladminger Tauern Süd, Gurktaler Alpen, Nördliche Wölzer Tauern, Südliche Wölzer Tauern, Rottenmanner Tauern, Triebener Tauern, Dachsteingebiet, Seetaler Alpen, Koralpe, Gaaler Alpen, Ennstaler Alpen, Mürzteger Alpen



### Avalanche problems



### Danger ratings



### Expositions

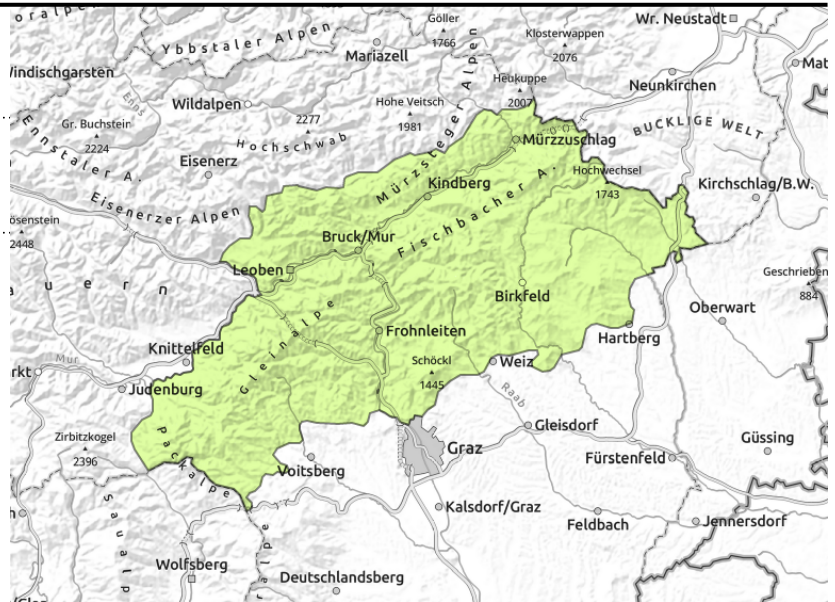


valid for: **Monday, 22.01.2024**

**Mürztaler Alpen, Westliche Fischbacher Alpen und Grazer Bergland, Östliche Fischbacher Alpen und Wechselgebiet, Stub- und Gleinalpe**



small/thin drifted masses



**Low avalanche danger, small older snowdrift patches**

Avalanche danger is generally low. Snowdrifts generated on Friday have formed thin patches which could not settle on shady slopes and in isolated cases are triggerable as small slab avalanches. Danger zones near ridges and behind discontinuities in the terrain. The dangers of falling outweigh those of being buried in snow masses.

**Snowpack structure**

Snowdrift accumulations are relatively small, but poorly bonded. Faceted layers and surface hoar clinging to a melt-freeze crust are potential weak layers. The old snowpack beneath them is compact, without marked weak layers. The snowpack surface is melt-freeze encrusted, hard and often icy, but the surface on sunny slopes is soft.

**Weather**

Fine weather is receding. Following a night of clear skies, some sunshine on Monday morning. By midday clouds from an Atlantic cold front will move in, lowering as the day progresses, but it will remain dry. Precipitation will set in during Monday night, only minor snowfall on the northern flank of the Alps (snowfall level 900 m). At midday +7 degrees at 2000 m, +8 degrees at 1500 m. Winds will shift from southwesterly to westerly, reach 60 km/hr.

On Tuesday, minor snowfall on the northern flank of the Alps, clouds dispersing somewhat in the afternoon. On the southern flank of the Alps, the northerly foehn wind will scatter the clouds all day long.

**Outlook**

Avalanche danger levels are not expected to change significantly.

**Avalanche problems**



**Danger ratings**

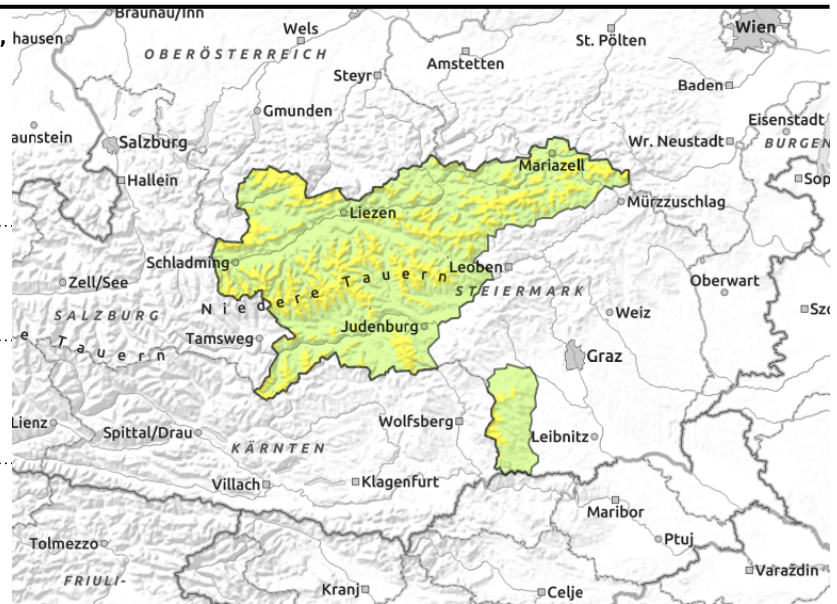


**Expositions**



valid for: **Monday, 22.01.2024**

Hochschwabgebiet, Eisenerzer Alpen, Totes Gebirge, Schladminger Tauern Nord, Schladminger Tauern Süd, Gurktaler Alpen, Nördliche Wölzer Tauern, Südliche Wölzer Tauern, Rottenmanner Tauern, Triebener Tauern, Dachsteingebiet, Seetaler Alpen, Koralpe, Gaaler Alpen, Ennstaler Alpen, Mürzsteiger Alpen



forestline



near ridges, behind discontinuities



seldom, in extremely steep terrain

## Instable snowdrift accumulations on shady slopes; isolated glide-snow releases

Avalanche danger above the treeline is moderate. Due to higher temperatures, likelihood of dry-snow slab avalanches has decreased. The drifts generated on Friday are bonding with the old snowpack surface. Danger zone are indicated by wind signs, easy to recognize, occur mostly in shady terrain, esp. near ridgelines and at entries into gullies a slab avalanche can be triggered by 1 person. Gliding snow activity is increasing, even large releases are possible where snowfall has been heavy. Isolated loose-snow avalanches will remain small. Windblown exposed surfaces are often hard and icy, acute danger of falling.

### Snowpack structure

Despite the mild temperatures the snow has remained powdery on sunny slopes. The fresh snow from Friday and the subsequently generated drifts lie deposited atop a melt-freeze crust; the faceted crystals beneath the crust are a potential weak layer. Deeper-down layers are triggerable only in isolated cases. Otherwise the snowpack is largely stable.

### Weather

Fine weather is receding. Following a night of clear skies, some sunshine on Monday morning. By midday clouds from an Atlantic cold front will move in, lowering as the day progresses, but it will remain dry. Precipitation will set in during Monday night, only minor snowfall on the northern flank of the Alps (snowfall level 900 m). At midday +7 degrees at 2000 m, +8 degrees at 1500 m. Winds will shift from southwesterly to westerly, reach 60 km/hr.

On Tuesday, minor snowfall on the northern flank of the Alps, clouds dispersing somewhat in the afternoon. On the southern flank of the Alps, the northerly foehn wind will scatter the clouds all day long.

### Outlook

Avalanche danger levels are not expected to change significantly.

Translated by Jeffrey McCabe, [www.creativtrans.com](http://www.creativtrans.com)

#### Avalanche problems



#### Danger ratings



#### Expositions

