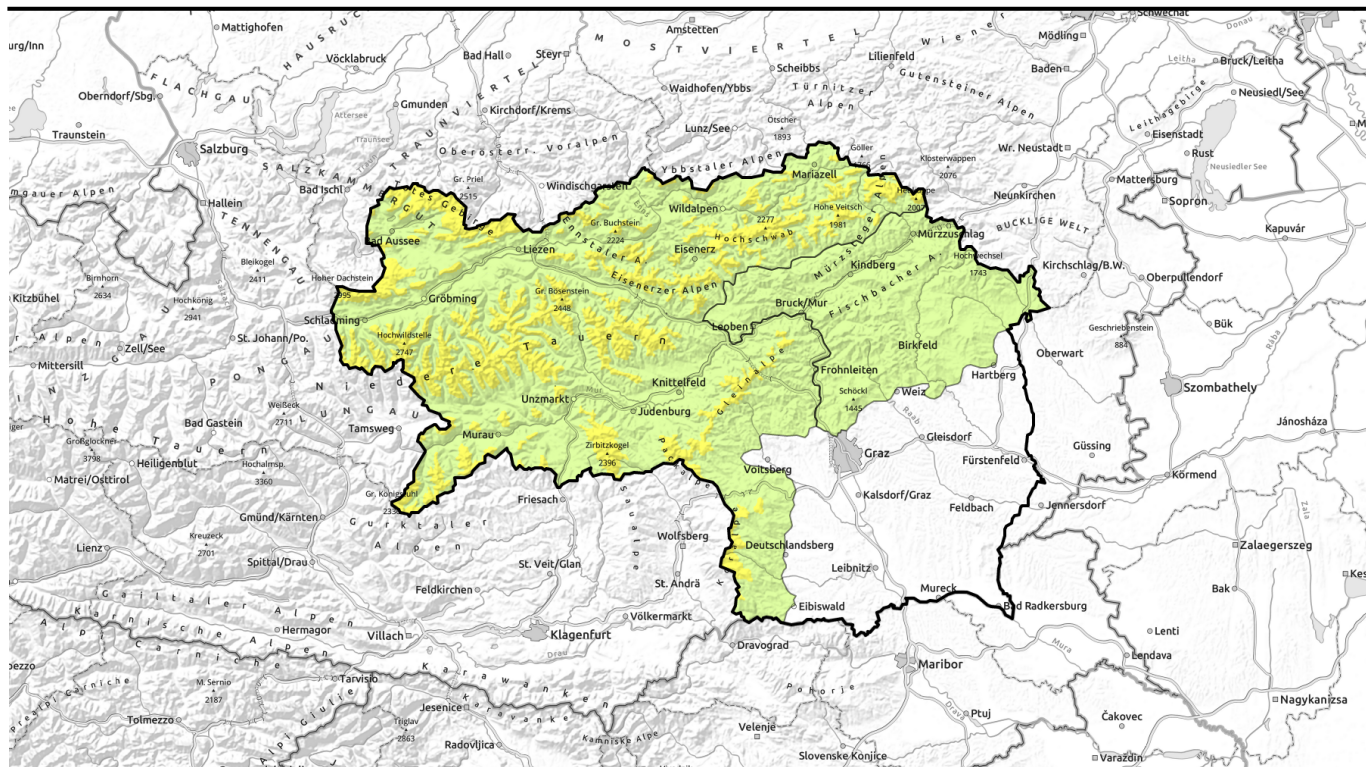


valid for: **Wednesday, 17.01.2024**



## Moderate danger due to snowdrifts



Mürztaler Alpen, Westliche Fischbacher Alpen und Grazer Bergland, Östliche Fischbacher Alpen und Wechselgebiet



1500 m

Hochschwabgebiet, Mürzsteger Alpen, Eisenerzer Alpen, Ennstaler Alpen, Totes Gebirge, Schladminger Tauern Nord, Schladminger Tauern Süd, Gurktaler Alpen, Nördliche Wölzer Tauern, Südliche Wölzer Tauern, Rottenmanner Tauern, Triebener Tauern, Dachsteingebiet, Seetaler Alpen, Korralpe, Stub- und Gleinalpe, Gaaler Alpen



### Avalanche problems



### Danger ratings

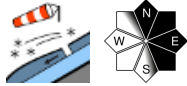
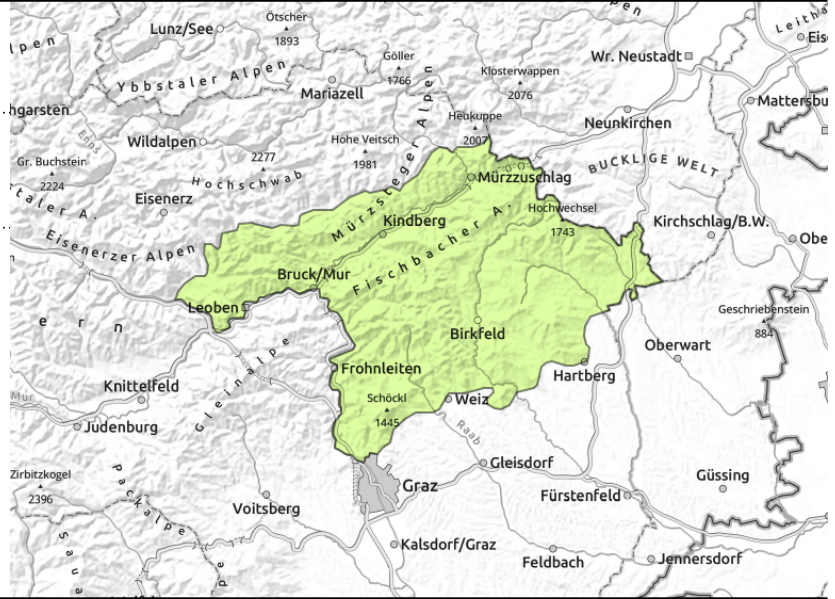


### Expositions



# valid for: **Wednesday, 17.01.2024**

**Mürztaler Alpen, Westliche Fischbacher Alpen und Grazer Bergland, Östliche Fischbacher Alpen und Wechselgebiet**



small/thin drifted masses

## Generally low avalanche danger, but isolated snowdrift patches require caution

Avalanche danger is generally low. On E/S facing slopes near ridges and behind discontinuities in the terrain, thin snowdrift patches have formed which can be triggered as slab avalanches even by 1 person. The dangers of falling outweigh those of being buried in snow masses.

### Snowpack structure

Snowdrift accumulations are relatively small, but poorly bonded esp. on E/S facing slopes. Faceted layers and surface hoar clinging to a melt-freeze crust are potential weak layers. The old snowpack beneath them is compact, without marked weak layers. The snowpack surface is highly diverse, with alternating wind crusts, eroded crusts and hardened, icy surfaces.

### Weather

On Wednesday clouds will dominate, but visibility will be adequate, clouds later dispersing, some sunshine. The SW winds will intensify, reach storm strength in the southern and eastern ranges, light snow showers are possible. Temperatures rising measurably. At 2000 m: rising to +4 degrees north of the Main Alpine Ridge and in the eastern ranges; only -2 degrees in the SW ranges.

### Outlook

On Wednesday night, a bit of snowfall (rainfall lower down). On Thursday, dry and variably cloudy. Avalanche danger will remain low.

#### Avalanche problems



#### Danger ratings

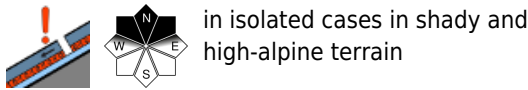
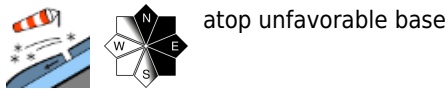


#### Expositions



valid for: **Wednesday, 17.01.2024**

Hochschwabgebiet, Mürzsteger Alpen, Eisenerzer Alpen, Ennstaler Alpen, Totes Gebirge, Schladminger Tauern Nord, Schladminger Tauern Süd, Gurktaler Alpen, Nördliche Wölzer Tauern, Südliche Wölzer Tauern, Rottenmanner Tauern, Triebener Tauern, Dachsteingebiet, Seetaler Alpen, Korralpe, Stub- und Gleinalpe, Gaaler Alpen



### Snowdrift accumulations atop instable layers

Avalanche danger above the treeline is moderate. Main problem: snowdrifts in all aspects, but esp. on east and south-facing slopes. Danger zones near ridges, at entries into gullies and bowls, behind discontinuities. Instable snowdrifts have accumulated in exposed zones, triggerable as small-to-medium slab avalanches even by minimum additional loading. Freshly generated cornices are instable, easily triggered. On shady steep high-altitude slopes, also large avalanches can be triggered (start of a persistent weak layer problem). Windblown surfaces are often icy and hard, acute danger of falling.

### Snowpack structure

Snowdrift accumulations occur not only near ridges, also on E/S facing slopes. Faceted layers and surface hoar clinging to a melt-freeze crust are potential weak layers. Potential weak layers are faceted crystals and surface hoar atop a melt-freeze crust. The base is generally compact and without marked layers, only on steep shady slopes at high altitudes is expansively metamorphosed snow weakening the fundament.

### Weather

On Wednesday clouds will dominate initially, but visibility will be adequate, clouds later dispersing, some sunshine. The SW winds will intensify, reach storm strength in the southern and eastern ranges, light snow showers are possible. Temperatures rising measurably. At 2000 m: rising to +4 degrees north of the Main Alpine Ridge and in the eastern ranges; only -2 degrees in the SW ranges.

### Outlook

On Wednesday night, a bit of snowfall (rainfall lower down). On Thursday, dry and variably cloudy. Avalanche danger will remain low.

Translated by Jeffrey McCabe, [www.creativtrans.com](http://www.creativtrans.com)

#### Avalanche problems



#### Danger ratings



#### Expositions

