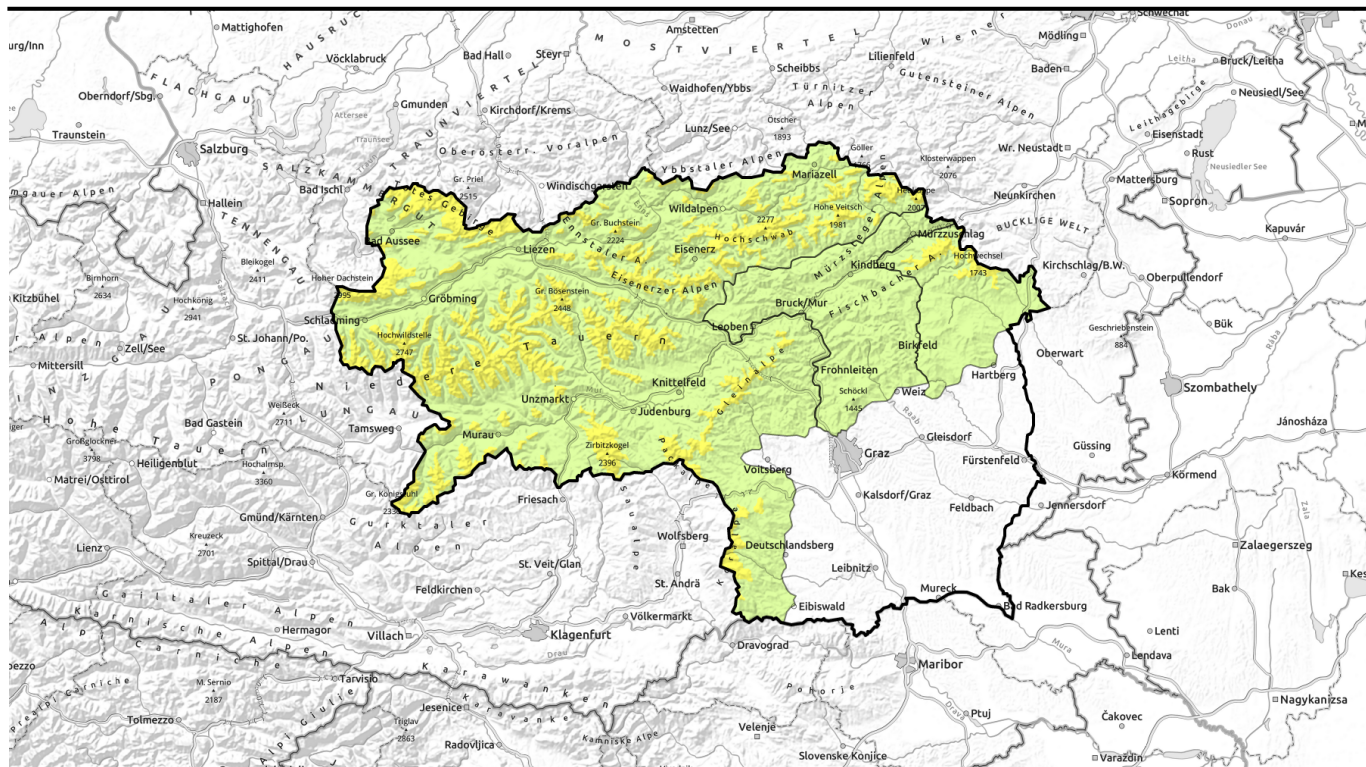


valid for: **Monday, 15.01.2024**



## Moderate danger due to snowdrifts



Mürztaler Alpen, Westliche Fischbacher Alpen und Grazer Bergland



1500 m

Hochschwabgebiet, Mürzsteger Alpen, Eisenerzer Alpen, Ennstaler Alpen, Totes Gebirge, Schladminger Tauern Nord, Schladminger Tauern Süd, Gurktaler Alpen, Nördliche Wölzer Tauern, Südliche Wölzer Tauern, Rottenmanner Tauern, Gaaler Alpen, Triebener Tauern, Seetaler Alpen, Östliche Fischbacher Alpen und Wechselgebiet, Stub- und Gleinalpe, Korralpe, Dachsteingebiet



### Avalanche problems



### Danger ratings

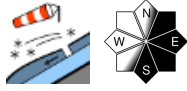


### Expositions

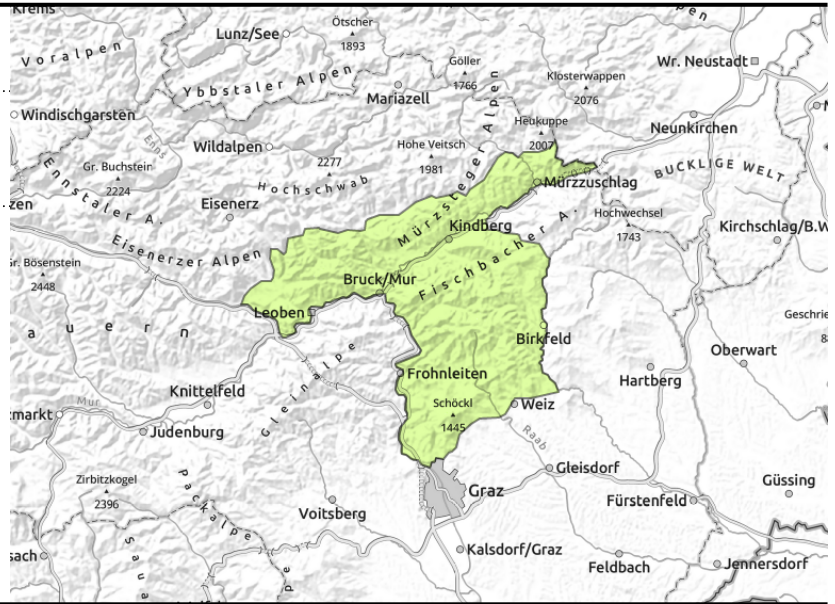


valid for: **Monday, 15.01.2024**

**Mürztaler Alpen, Westliche Fischbacher Alpen und Grazer Bergland**



small/thin drifted masses



**Generally low avalanche danger, but isolated snowdrift patches require caution**

Avalanche danger is moderate above the treeline, elsewhere danger is low. Near ridges and behind discontinuities in the terrain, thin snowdrift patches have formed which can be triggered as slab avalanches even by 1 person. The dangers of falling outweigh those of being buried in snow masses.

**Snowpack structure**

Over the course of the last week, minor loose snow has been transported by variably shifting winds, the snowdrift accumulations are small, poorly bonded with the surface esp. on E/S facing slopes. The surface hoar and faceted crystals are potential weak layers, also the still loose fresh snow. The old snowpack beneath them is compact, without marked weak layers.

The snowpack surface is highly diverse, often a hard challenge for skiers, alternating wind crusts, eroded ridges, hardened and icy surfaces. In wind-protected shady terrain and wooded zones there is also loose powder (due to cold, and good outgoing nocturnal radiation beneath clear skies).

**Weather**

On Sunday night heavy clouds will pass through, persist in the northern barrier cloud regions, reduce visibility up to summit level, minor snowfall is possible. South of the Main Alpine Ridge, more tranquil conditions and sunnier. At 2000 m: -5 degrees temperatures dropping: -8 to -10 degrees.

**Outlook**

On Monday night a stormy NW wind will move into the entire region of Styria, slackening off during the daytime hours. Tuesday will be overcast, esp. in the northern regions, and cold. Avalanche danger levels are not expected to change significantly.

**Avalanche problems**



**Danger ratings**



**Expositions**



valid for: **Monday, 15.01.2024**

Hochschwabgebiet, Mürzsteiger Alpen, Eisenerzer Alpen, Ennstaler Alpen, Totes Gebirge, Schladminger Tauern Nord, Schladminger Tauern Süd, Gurktaler Alpen, Nördliche Wölzer Tauern, Südliche Wölzer Tauern, Rottenmanner Tauern, Gaaler Alpen, Triebener Tauern, Seetaler Alpen, Östliche Fischbacher Alpen und Wechselgebiet, Stub- und Gleinalpe, Korralpe, Dachsteingebiet



atop unfavorable base



in isolated cases in shady and high-alpine terrain

## Snowdrift accumulations are still instable, esp. on E/S facing slopes

Avalanche danger above the treeline is moderate. Main problem: snowdrifts in all aspects, but esp. on east and south-facing slopes. Danger zones near ridges, at entries into gullies and bowls, behind discontinuities. Instable snowdrifts have accumulated in exposed zones, triggerable as small-to-medium slab avalanches even by minimum additional loading. On shady steep high-altitude slopes, also large avalanches can be triggered (start of a persistent weak layer problem). Windblown surfaces are often icy and hard, acute danger of falling.

### Snowpack structure

Over the course of the last week, minor loose snow has been transported by variably shifting winds, the snowdrift accumulations are small, poorly bonded with the surface esp. on E/S facing slopes. The surface hoar and faceted crystals are potential weak layers, also the still loose fresh snow. The old snowpack beneath them is compact, without marked weak layers.

The snowpack surface is highly diverse, often a hard challenge for skiers, alternating wind crusts, swirls, hardened and icy surfaces. In wind-protected shady terrain and wooded zones there is also loose powder (due to cold, and good outgoing nocturnal radiation beneath clear skies).

### Weather

On Sunday night heavy clouds will pass through, persist in the northern barrier cloud regions, reduce visibility up to summit level, minor snowfall is possible. South of the Main Alpine Ridge, more tranquil conditions and sunnier. At 2000 m: -5 degrees temperatures dropping: -8 to -10 degrees.

### Outlook

On Monday night a stormy NW wind will move into the entire region of Styria, slackening off during the daytime hours. Tuesday will be overcast, esp. in the northern regions, and cold. Avalanche danger levels are not expected to change significantly.

Translated by Jeffrey McCabe, [www.creativtrans.com](http://www.creativtrans.com)

#### Avalanche problems



#### Danger ratings



#### Expositions

