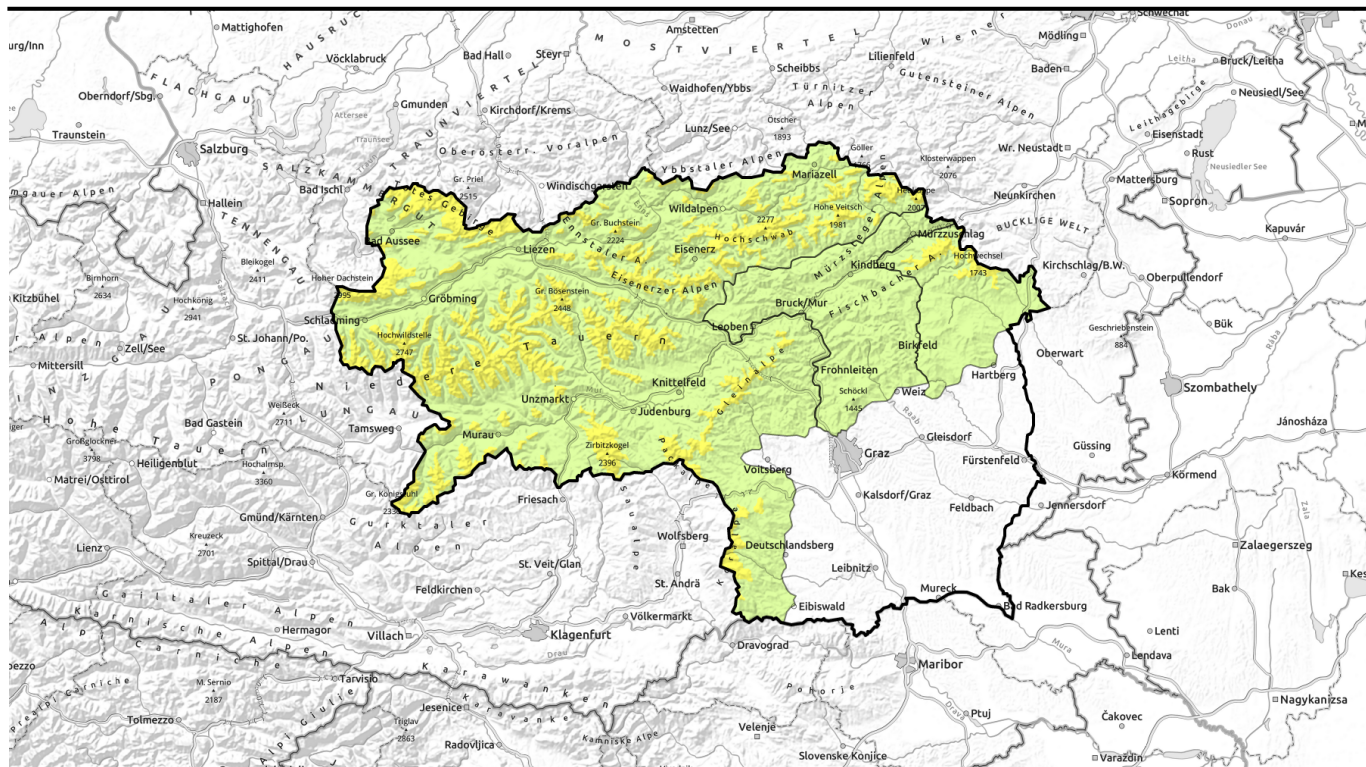


valid for: **Tuesday, 09.01.2024**



Snowdrifts in unexpected aspects



Mürztaler Alpen, Westliche Fischbacher Alpen und Grazer Bergland



forestline

Hochschwabgebiet, Mürzsteger Alpen, Eisenerzer Alpen, Ennstaler Alpen, Totes Gebirge, Schladminger Tauern Nord, Schladminger Tauern Süd, Gurktaler Alpen, Nördliche Wölzer Tauern, Südliche Wölzer Tauern, Rottenmanner Tauern, Gaaler Alpen, Triebener Tauern, Seetaler Alpen, Östliche Fischbacher Alpen und Wechselgebiet, Stub- und Gleinalpe, Korralpe, Dachsteingebiet



Avalanche problems



Danger ratings



Expositions

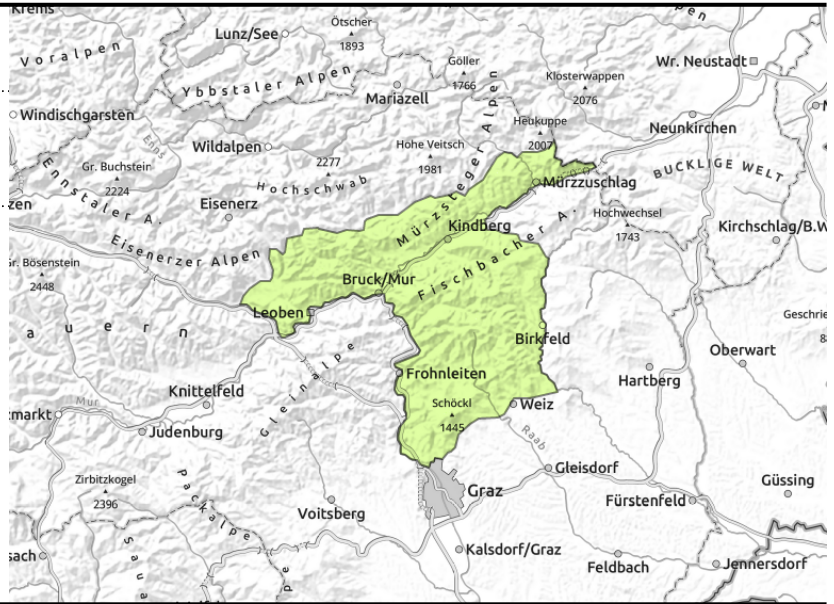


valid for: **Tuesday, 09.01.2024**

Mürztaler Alpen, Westliche Fischbacher Alpen und Grazer Bergland



behind discontinuities, small/thin drifted masses



Generally low danger but snowdrift patches at summit level

Avalanche danger is low in general. Near ridges and behind discontinuities in the terrain, thin snowdrift patches have formed which can be triggered even by 1 person, but only small releases are generated.

Snowpack structure

The fresh snow from the weekend was transported to E/S facing slopes and on Tuesday, when winds shift, will be transported eastwards to west-facing slopes. The snowdrift accumulations are small. On E/S facing slopes they cover patches of loose fresh snow. On west-facing slopes the fresh drifts lie deposited atop surface hoar. Both of these are potential weak layers. The old snowpack beneath them is compact, without marked weak layers.

Weather

Following a night of clear skies, heavy cloud cover will move in from the southeast on Tuesday morning. The summits will be shrouded in clouds, visibility will be reduced and a bit of light snowfall is possible. At 2000 m: between -8 and -10 degrees. Strong easterly winds will arise during the course of the day.

Outlook

Wednesday will bring cold but sunny weather, accompanied by strong southerly winds. Avalanche danger will remain low.

Avalanche problems



Danger ratings



Expositions



valid for: **Tuesday, 09.01.2024**

Hochschwabgebiet, Mürzsteiger Alpen, Eisenerzer Alpen, Ennstaler Alpen, Totes Gebirge, Schladminger Tauern Nord, Schladminger Tauern Süd, Gurktaler Alpen, Nördliche Wölzer Tauern, Südliche Wölzer Tauern, Rottenmanner Tauern, Gaaler Alpen, Triebener Tauern, Seetaler Alpen, Östliche Fischbacher Alpen und Wechselgebiet, Stub- und Gleinalpe, Koralpe, Dachsteingebiet



forestline



atop unfavorable base, behind discontinuities



in isolated cases

Cold easterly winds depositing snowdrift patches on west-facing slopes

Avalanche danger above the treeline is moderate. Main problem: snowdrift which have accumulated on E/S/W facing slopes. Danger zones occur in ridgeline terrain, at entries into gullies and bowls and behind discontinuities. Wherever the snow is bonded like a slab, medium-sized avalanches can be triggered even by 1 person. Frequency of danger zones increases with ascending altitude. In all aspects, isolated naturally triggered glide-snow avalanches can be expected. Avoid zones below glide cracks.

Snowpack structure

Following a night of clear skies, heavy cloud cover will move in from the southeast on Tuesday morning. The summits will be shrouded in clouds, visibility will be reduced and a bit of light snowfall is possible. On west-facing slopes the fresh drifts will be deposited atop surface hoar, which is a weak layer. The old snowpack is compact, without marked weak layers, only on shady high-altitude slopes where snow is shallow are there faceted layers lurking. At 2000 m: between -8 and -10 degrees. Strong easterly winds will arise during the course of the day.

Weather

Following a night of clear skies, heavy cloud cover will move in from the southeast on Tuesday morning. The summits will be shrouded in clouds, visibility will be reduced and a bit of light snowfall is possible. At 2000 m: between -8 and -10 degrees. Strong easterly winds will arise during the course of the day in the Northern Alps and the rimline ranges.

Outlook

Wednesday will bring cold but sunny weather, accompanied by strong southerly winds. Avalanche danger will remain under the threat of snowdrifts, new danger zones will form on north-facing slopes.

Translated by Jeffrey McCabe, www.creativtrans.com

Avalanche problems



Danger ratings



Expositions

