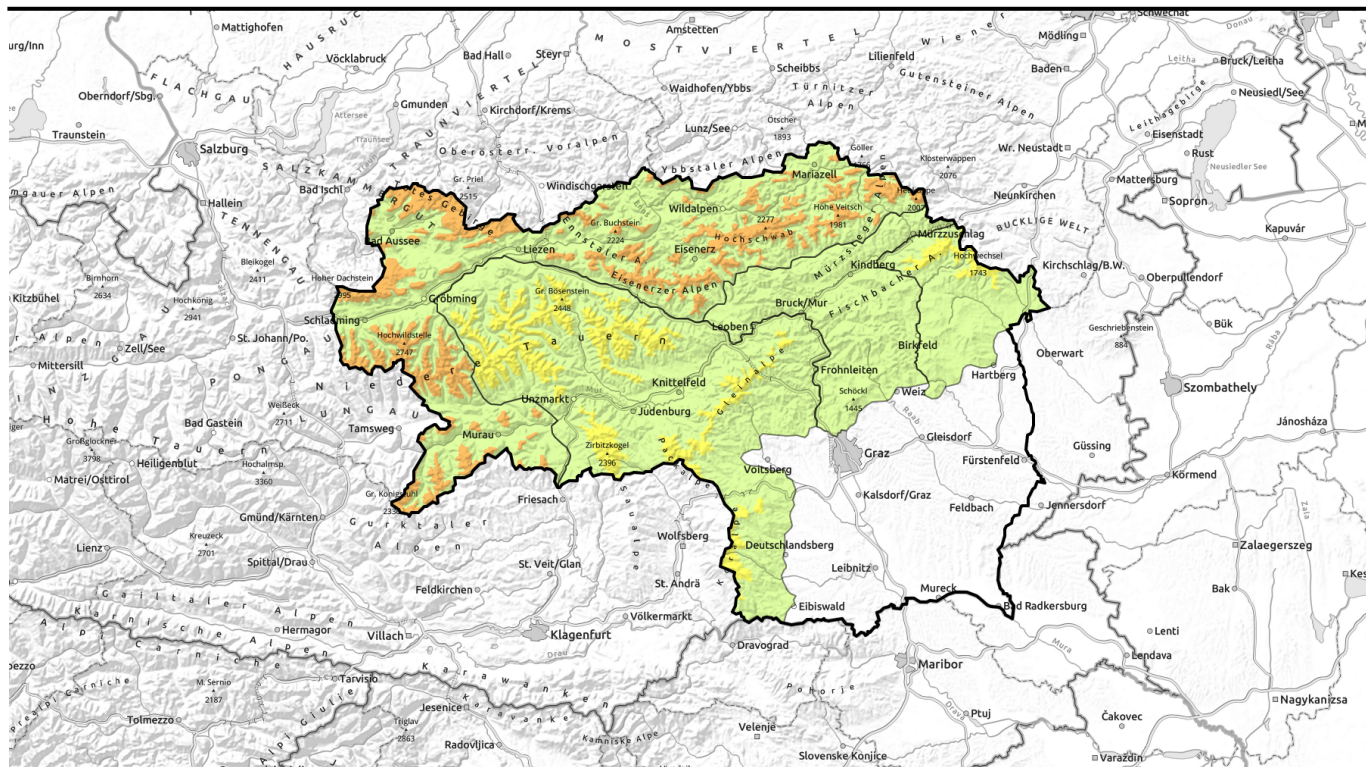

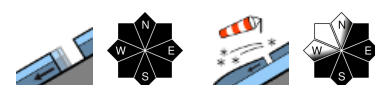



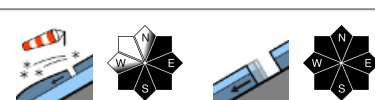


# valid for: Monday, 08.01.2024



## Fresh cold snowdrifts, highly prone to triggering

|   |   |   |
|---|---|---|
|  | <p>forestline<br/>                 Rottenanner Tauern, Triebener Tauern, Nördliche Wölzer Tauern, Südliche Wölzer Tauern, Gaaler Alpen, Stub- und Gleinalpe, Seetaler Alpen, Korralpe, Östliche Fischbacher Alpen und Wechselgebiet</p> |  |
|  | <p>Mürztaler Alpen, Westliche Fischbacher Alpen und Grazer Bergland</p>   |  |
|  | <p>forestline<br/>                 Hochschwabgebiet, Mürzsteger Alpen, Eisenerzer Alpen, Ennstaler Alpen, Totes Gebirge, Dachsteingebiet, Schladminger Tauern Nord, Schladminger Tauern Süd, Gurktaler Alpen</p>                        |  |

### Avalanche problems



### Danger ratings

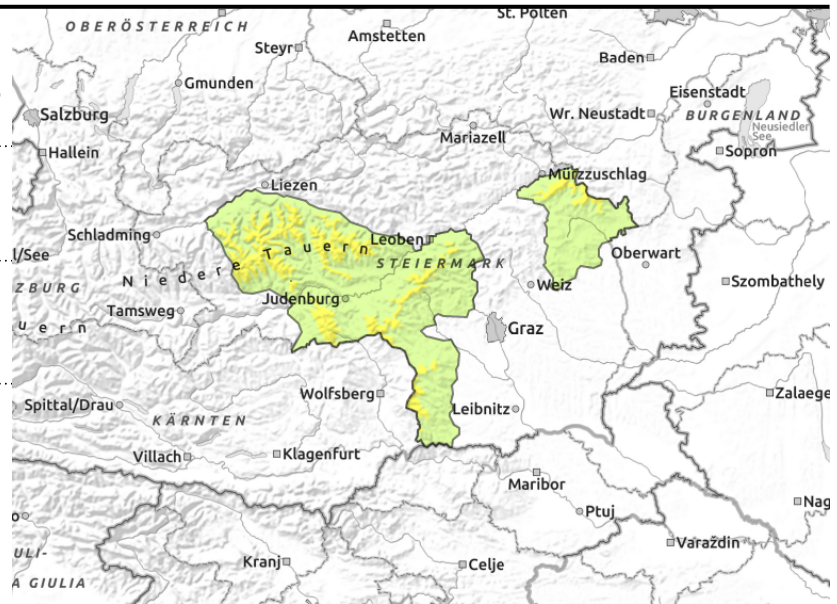
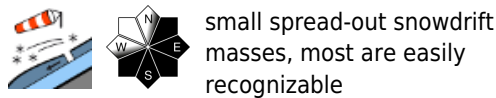
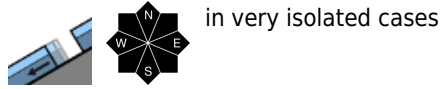


### Expositions



valid for: **Monday, 08.01.2024**

**Rottenmanner Tauern, Triebener Tauern, Nördliche Wölzer Tauern, Südliche Wölzer Tauern, Gaaler Alpen, Stub- und Gleinalpe, Seetaler Alpen, Koralle, Östliche Fischbacher Alpen und Wechselgebiet**



## Fresh drifts at high altitudes

Avalanche danger above the treeline is moderate. Main problem in backcountry touring zones: snowdrifts, esp. on E/S facing slopes. Danger zones occur in ridgeline terrain and behind discontinuities, in gullies and bowls. A slab can trigger from 1 person, usually size 2 releases unfold. In high-altitude zones which have not yet discharged, isolated glide-snow avalanches are still possible. Open glide cracks are indicators of potential danger, avoid them.

## Snowpack structure

At the start of this period of precipitation the snow fell with little wind. On Sunday the fresh snow and drifts blanketed the soft fresh snow which fell on Saturday. In the Gurktal and Seetal Alps, up to 20 cm, in Niedere Tauern up to 15 cm of fresh snow was registered. In the northern Wölzer Tauern and Rottenmanner Tauern the snow fell with little wind, in the southern Niedere Tauern and Gurktal and Seetal Alps the winds were stronger. Bonding is poor, but the old snowpack is compact and without marked weak layers (topped by a thick crust capable of bearing loads). Only on very steep shady slopes, faceted crystals beneath the crust are weakening the snowpack.

## Weather

Due to brisk northerly winds (in the east, gusty, stormy, bitter cold), the summits are disappearing in fog and clouds. Light snow showers will pass through, esp. in northern Upper Styria, elsewhere little precipitation is anticipated (except in the rimline ranges). At 2000 m: -13 degrees. The northerly winds make it feel even colder.

## Outlook

On Tuesday, heavy cloud moving into southern Styria from the east, shrouding the peaks, with a bit of snowfall along the western rimline mountain ranges. In the north, sunny and cold weather, brisk winds, slightly receding avalanche danger.

### Avalanche problems



### Danger ratings



### Expositions

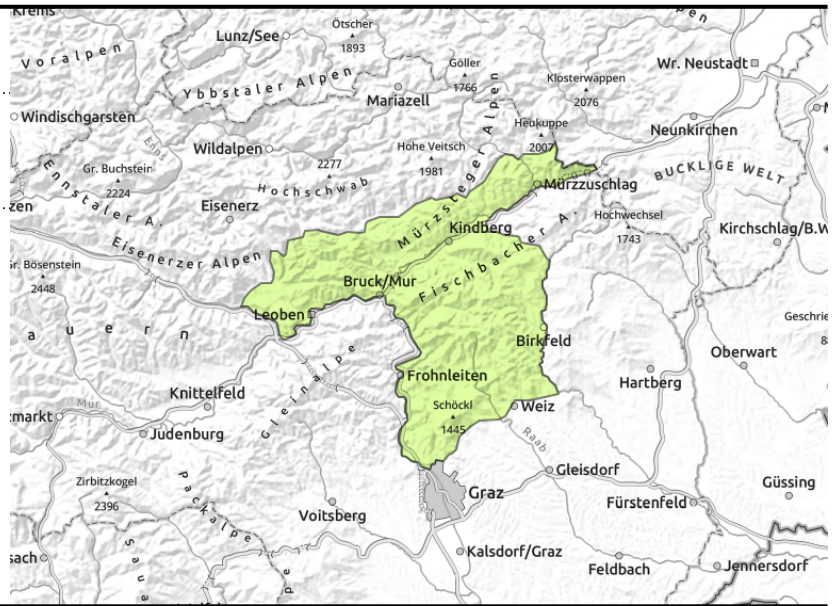


valid for: **Monday, 08.01.2024**

**Mürztaler Alpen, Westliche Fischbacher Alpen und Grazer Bergland**



behind discontinuities in the terrain



**Generally low avalanche danger. Snowdrift patches at summit level.**

Avalanche danger is low in general. Behind protruberances, some thin snowdrifts have accumulated which can be triggered as a slab by large additional loading.

**Snowpack structure**

The old snowpaack is compact, without marked weak layers, topped my crusts riddled with water seepage channels. The cold fresh snow and drifts blanket the often hardened or wet snowpack. On smooth ground, the snowpack glides over the grass-covered ground.

**Weather**

Due to brisk northerly winds (in the east, gusty, stormy, bitter cold), the summits are disappearing in fog and clouds. Light snow showers will pass through, esp. in northern Upper Styria, elsewhere little precipitation is anticipated (except in the rimline ranges). At 2000 m: -7 degrees in the southern mountains. The northerly winds make it feel even colder.

**Outlook**

On Tuesday, heavy cloud moving into southern Styria from the east, shrouding the peaks, with a bit of snowfall along the western rimline mountain ranges. In the north, sunny and cold weather, brisk winds, slightly receding avalanche danger.

**Avalanche problems**



**Danger ratings**

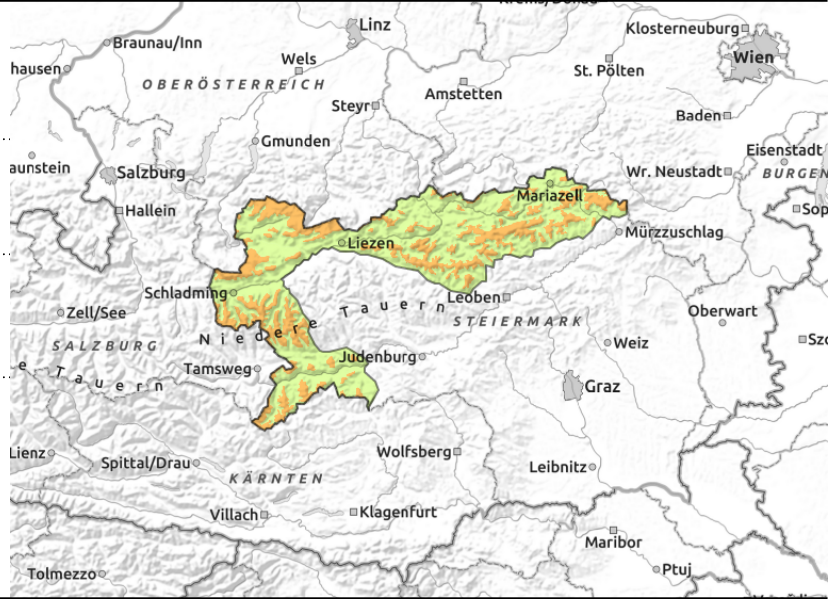


**Expositions**



valid for: **Monday, 08.01.2024**

**Hochschwabgebiet, Mürzsteger Alpen, Eisenerzer Alpen, Ennstaler Alpen, Totes Gebirge, Dachsteingebiet, Schladminger Tauern Nord, Schladminger Tauern Süd, Gurktaler Alpen**



forestline



atop unfavorable base, behind discontinuities



in very isolated cases

### Cold north wind, fresh snowdrifts

Avalanche danger above the treeline is considerable. Main problem on Monday: fresh drifts in the backcountry touring zones, esp. on N/E/S facing slopes. Danger zones occur in ridgeline terrain and behind discontinuities, in gullies and bowls. Where the snow has become bonded by the wind, caution is imperative. A slab can trigger from 1 person, usually size 2 releases unfold. In high-altitude zones which have not yet discharged, isolated glide-snow avalanches are still possible.

### Snowpack structure

At the start of this period of precipitation the snow fell with little wind. On Sunday the fresh snow and drifts blanketed the soft fresh snow which fell on Saturday. In the last 24 hours in the Eisenerzer Alps and Hochschwab up to 30 cm, in the Dachstein region up to 40 cm, in the Schladminger Tauern to Turrach 30 cm of fresh snow has been registered. The cold, stormy winds have transported the snow, bonding is poor, prone to triggering, but the old snowpack is compact and without marked weak layers (topped by a thick crust capable of bearing loads). Only on very steep shady slopes, faceted crystals beneath the crust are weakening the snowpack.

### Weather

Due to brisk northerly winds (in the east, gusty, stormy, bitter cold), the summits are disappearing in fog and clouds. Light snow showers will pass through, esp. in northern Upper Styria, elsewhere little precipitation is anticipated (except in the rimline ranges). Aat 2000 m: -13 to -7 degrees. The northerly winds make it feel even colder.

### Outlook

On Tuesday, heavy cloud moving into southern Styria from the east, shrouding the peaks, with a bit of snowfall along the western rimline mountain ranges. In the north, sunny and cold weather, brisk winds, slightly receding avalanche danger.

Translated by Jeffrey McCabe, [www.creativtrans.com](http://www.creativtrans.com)

#### Avalanche problems



#### Danger ratings



#### Expositions

