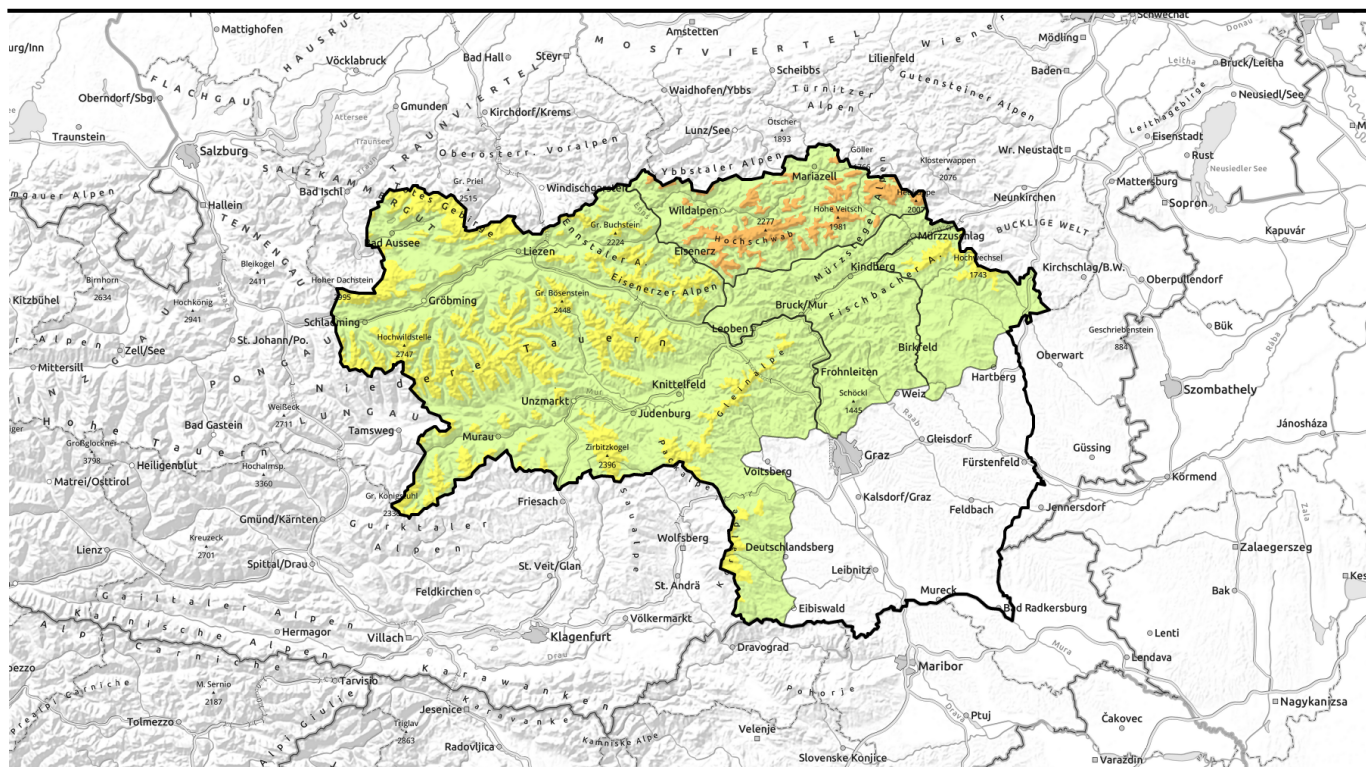


valid for: **Sunday, 07.01.2024**

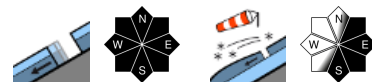


## Fresh snow transported to E/S facing slopes. Arctic air is coming.



forestline

Totes Gebirge, Dachsteingebiet, Schladminger Tauern Nord, Ennstaler Alpen, Rottenmanner Tauern, Eisenerzer Alpen, Triebener Tauern, Nördliche Wölzer Tauern, Südliche Wölzer Tauern, Schladminger Tauern Süd, Gurktaler Alpen, Gaaler Alpen, Stub- und Gleinalpe, Seetaler Alpen, Koralmpe, Östliche Fischbacher Alpen und Wechselgebiet



Mürztaler Alpen, Westliche Fischbacher Alpen und Grazer Bergland



forestline

Hochschwabgebiet, Mürzsteger Alpen



### Avalanche problems



### Danger ratings



### Expositions



valid for: **Sunday, 07.01.2024**

**Totes Gebirge, Dachsteingebiet, Schladminger Tauern Nord, Ennstaler Alpen, Rottenmanner Tauern, Eisenerzer Alpen, Triebener Tauern, Nördliche Wölzer Tauern, Südliche Wölzer Tauern, Schladminger Tauern Süd, Gurktaler Alpen, Gaaler Alpen, Stub- und Gleinalpe, Seetaler Alpen, Koralpe, Östliche Fischbacher Alpen und Wechselgebiet**



forestline



glide-snow avalanches possible at any time of day in all aspects



small spread-out snowdrift masses, most easily recognizable

## Fresh drifts being generated at high altitudes

Avalanche danger above the treeline is moderate. Due to cold northerly winds, danger zones are increasing, generating fresh snowdrift accumulations on east and south-facing slopes. Danger zones occur in ridgeline terrain and behind discontinuities, in gullies and bowls. A slab can trigger from 1 person, usually size 2 releases unfold.

In high-altitude zones which have not yet discharged, isolated glide-snow avalanches are still possible. Open glide cracks are indicators of potential danger, avoid them.

### Snowpack structure

At the start of this period of precipitation the snow fell with little wind. On Sunday the fresh snow and drifts will blanket the soft fresh snow which fell on Saturday, bonding with the cold powder is poor and thus, prone to triggering. The old snowpack is compact and without marked weak layers, topped by a thick crust which is capable of bearing loads (unpleasant for skiers: riddled with water seepage channels).

On smooth ground the snowpack continues to crack and glide downhill.

### Weather

On Sunday, arctic cold air masses will arrive from the north. The peaks will be mostly in fog and cloud, light-to-moderate snowfall is expected. All in all, 5-15 cm of cold fresh snow and drifts are anticipated, plus brisk cold northerly winds which in the afternoon will become stormy, esp. near the eastern rim ranges. At 2000 m: in the Northern Alps -8 degrees; on the southern flank of the Alps -3 degrees. Temperatures will fall further.

### Outlook

Also on Monday, heavy clouds will move through, but it will remain mostly free of precipitation (a bit of exceptional snowfall is possible in the northern barrier cloud regions). Avalanche danger is not expected to change significantly.

#### Avalanche problems



#### Danger ratings



#### Expositions

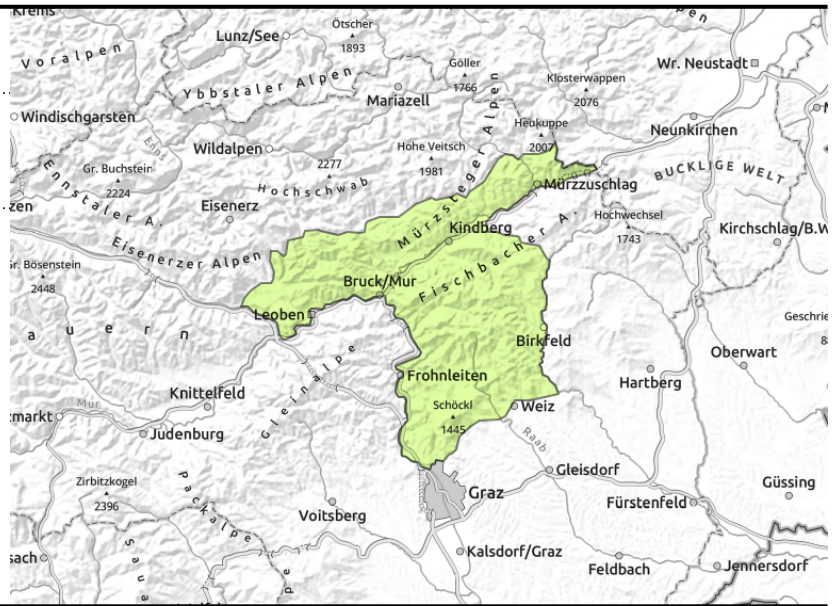


valid for: **Sunday, 07.01.2024**

**Mürztaler Alpen, Westliche Fischbacher Alpen und Grazer Bergland**



behind discontinuities in the terrain



**Generally low avalanche danger. Snowdrift patches at summit level.**

Avalanche danger is low in general. Behind protruberances, some thin snowdrifts have accumulated which can be triggered as a slab by large additional loading.

**Snowpack structure**

The old snowpack is compact, without marked weak layers, topped my crusts riddled with water seepage channels. The cold fresh snow and drifts blanket the often hardened or wet snowpack. On smooth ground, the snowpack glides over the grass-covered ground.

**Weather**

On Sunday, arctic cold air masses will arrive from the north. The peaks will be mostly in fog and cloud, light-to-moderate snowfall is expected. All in all, 5-15 cm of cold fresh snow and drifts are anticipated, plus brisk cold northerly winds which in the afternoon will become stormy, esp. near the eastern rim ranges. At 2000 m: in the Northern Alps -8 degrees; on the southern flank of the Alps -3 degrees. Temperatures will fall further.

**Outlook**

Also on Monday, heavy clouds will move through, but it will remain mostly free of precipitation (a bit of exceptional snowfall is possible in the northern barrier cloud regions). Avalanche danger is not expected to change significantly.

**Avalanche problems**



**Danger ratings**

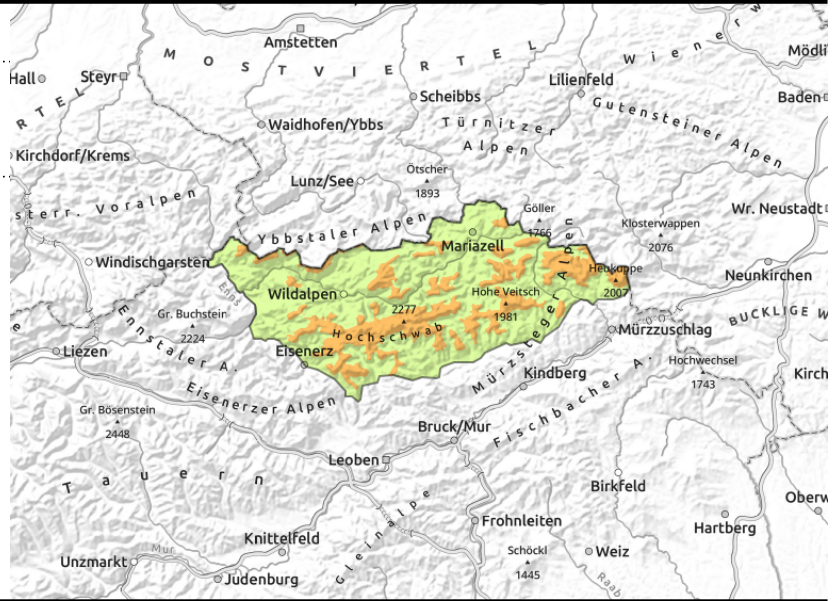
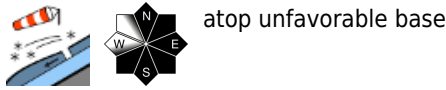


**Expositions**



valid for: **Sunday, 07.01.2024**

**Hochschwabgebiet, Mürzsteger Alpen**



**Fresh trigger-sensitive snowdrifts at high altitudes**

Avalanche danger will increase during the daytime at high altitudes: from moderate to considerable. Due to cold northerly winds, danger zones will rapidly increase, generating fresh snowdrift accumulations on N/E/S-facing slopes. Danger zones occur in ridgeline terrain and behind discontinuities, at entries into gullies and bowls. A slab will probably trigger from 1 person. As snowdrifts accumulate, also naturally triggered releases are possible in steep rough and rocky terrain. In high-altitude zones which have not yet discharged, isolated glide-snow avalanches are still possible. Open glide cracks are indicators of potential danger, avoid them.

**Snowpack structure**

At the start of this period of precipitation the snow fell with little wind. On Sunday the fresh snow and drifts will blanket the soft fresh snow which fell on Saturday, bonding with the cold powder is poor and thus, prone to triggering. The old snowpack is compact and without marked weak layers, topped by a thick crust which is capable of bearing loads (unpleasant for skiers: riddled with water seepage channels).

On smooth ground the snowpack continues to crack and glide downhill.

**Outlook**

Also on Monday, heavy clouds will move through, but it will remain mostly free of precipitation (a bit of exceptional snowfall is possible in the northern barrier cloud regions). Avalanche danger is not expected to change significantly.

Translated by Jeffrey McCabe, [www.creativtrans.com](http://www.creativtrans.com)

**Avalanche problems**



**Danger ratings**



**Expositions**

