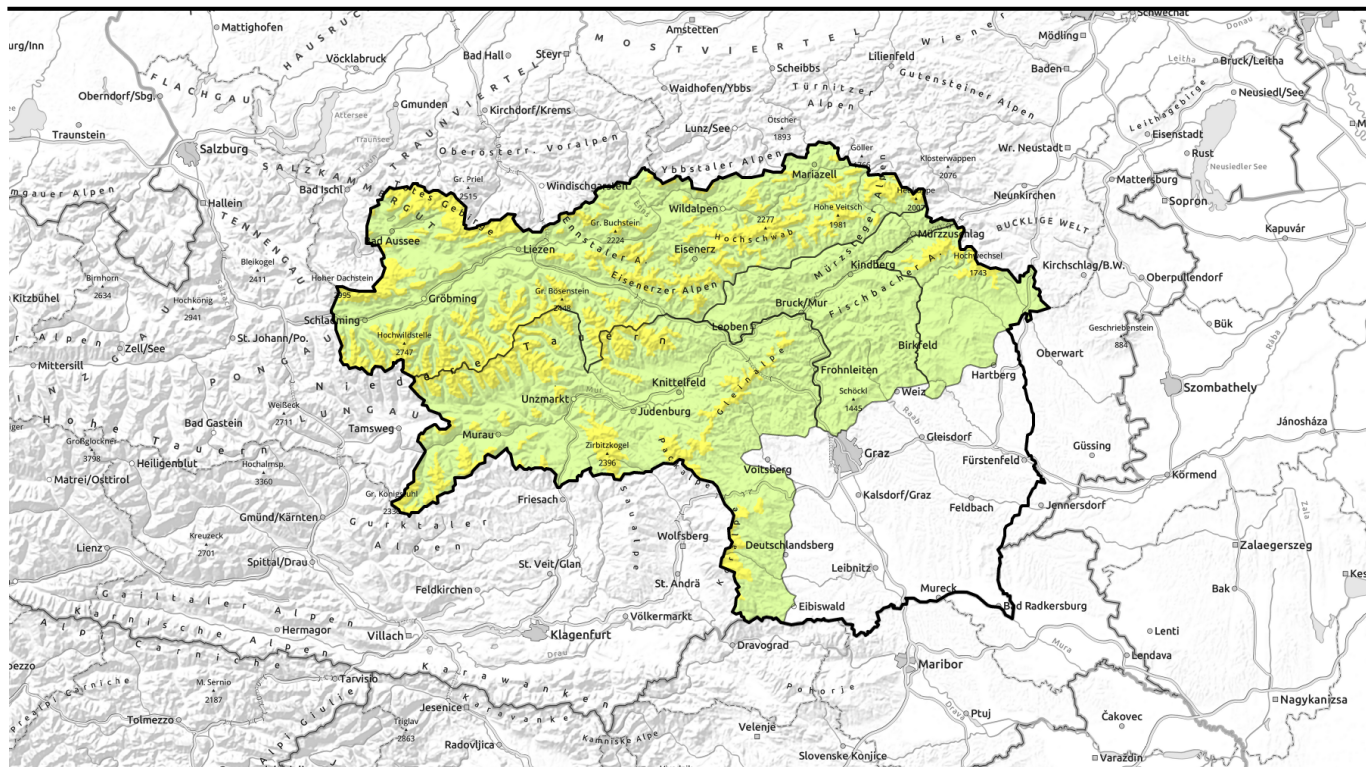








valid for: **Tuesday, 02.01.2024**



## Fresh snowdrift patches, moderate danger of naturally-triggered glide-snow avalanches.

	<p>1800 m Totes Gebirge, Dachsteingebiet, Schladminger Tauern Nord, Ennstaler Alpen, Rottenmanner Tauern, Hochschwabgebiet, Eisenerzer Alpen, Mürzteger Alpen, Triebener Tauern, Nördliche Wölzer Tauern</p>	
	<p>Mürztaler Alpen, Westliche Fischbacher Alpen und Grazer Bergland</p>	
	<p>1700 m Gaaleralpen, Südliche Wölzer Tauern, Schladminger Tauern Süd, Gurktaler Alpen, Seetaler Alpen, Stub- und Gleinalpe, Östliche Fischbacher Alpen und Wechselgebiet, Koralpe</p>	

### Avalanche problems



### Danger ratings

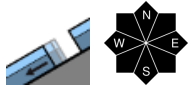
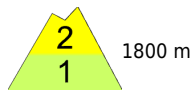


### Expositions

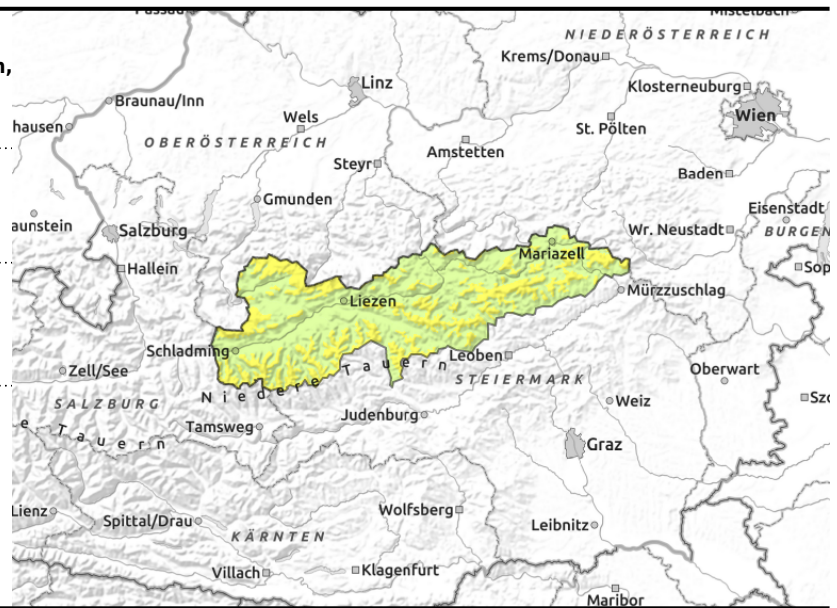


valid for: **Tuesday, 02.01.2024**

**Totes Gebirge, Dachsteingebiet, Schladminger Tauern Nord, Ennstaler Alpen, Rottenmanner Tauern, Hochschwabgebiet, Eisenerzer Alpen, Mürzsteiger Alpen, Triebener Tauern, Nördliche Wölzer Tauern**



thin, small snowdrift accumulations



## Avoid zones below glide cracks. Assess high-altitude snowdrifts with caution.

New snowdrift accumulations have formed, danger zones occur above the timberline esp. on steep east-facing slopes behind discontinuities, and can be triggered by one person, releasing as a small slab avalanche. In encrusted or icy steep terrain, acute danger of falling. Most of the fresh snow is bonding poorly.

Despite lower temperatures, danger of naturally triggered glide-snow avalanches persists at all altitudes, in all aspects (esp. south-facing slopes) on steep grassy slopes they are possible and can reach large size and endanger exposed transportation routes. Avoid zones below glide cracks, they are indicators of potential danger.

### Snowpack structure

Up to 25 cm of fresh snow fell during the night of New Year's Eve, most from Turrach over Zirbitz to Koralpe, much less in Tauern and Northern Alps. Storm westerly winds formed thin drifts, bonding poorly with the encrusted old snowpack surface which is compact and without marked weak layers (a thick melt-freeze crust capable of bearing loads), riddled with water seepage channels, highly unpleasant for skiers. The snowpack is gliding downhill and cracking on its journey.

### Weather

An Atlantic front will reach the Eastern Alps in the form of a westerly high-altitude airstream, bringing clouds and gray skies during the night, hardly any precipitation, moderate westerly winds in the northern mountain ranges, higher temperatures (not on the southern flank of the Alps). At 2000 m: -3 to -1 degree; at 1500 m: -1 to +1 degree.

On Wednesday, increasing sunshine, mild. Westerly winds only light, moderate in the NE.

### Outlook

Avalanche danger levels are not expected to change significantly.

#### Avalanche problems



#### Danger ratings



#### Expositions



valid for: **Tuesday, 02.01.2024**

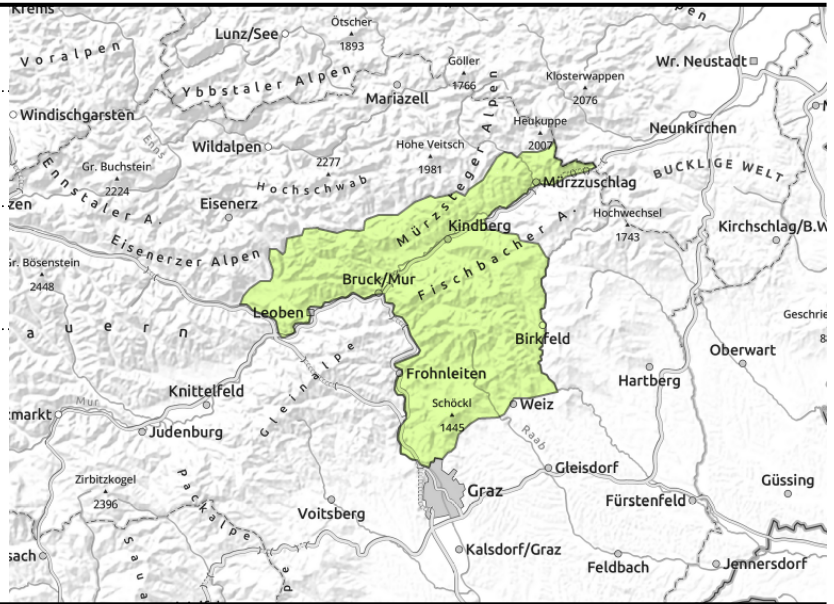
**Mürztaler Alpen, Westliche Fischbacher Alpen und Grazer Bergland**



in very isolated cases



thin, small snowdrift accumulations



**Generally low danger but caution urged towards isolated naturally triggered glide-snow avalanches**

Generally low danger, but isolated naturally-triggered glide-snow avalanches cannot be excluded. Danger zones: steep grassy slopes, hillsides, forest clearances. Avoid glide cracks. New snowdrift accumulations have formed, danger zones occur above the timberline esp. on steep east-facing slopes behind discontinuities, and can be triggered by one person, releasing as a small slab avalanche. Acute danger of falling.

**Snowpack structure**

The old snowpack is compact, no marked weak layers, riddled with water seepage channels. The snowpack is gliding downhill over smooth ground. Some fresh snowfall and drifts esp. on east-facing slopes, poorly bonded with the encrusted old snowpack surface.

**Weather**

An Atlantic front will reach the Eastern Alps in the form of a westerly high-altitude airstream, bringing clouds and gray skies during the night, hardly any precipitation, moderate westerly winds in the northern mountain ranges, higher temperatures (not on the southern flank of the Alps). At 2000 m: -3 to -1 degree; at 1500 m: -1 to +1 degree.

On Wednesday, increasing sunshine, mild. Westerly winds only light, moderate in the NE.

**Outlook**

Avalanche danger levels are not expected to change significantly.

**Avalanche problems**



**Danger ratings**

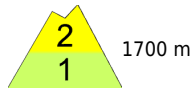


**Expositions**



valid for: **Tuesday, 02.01.2024**

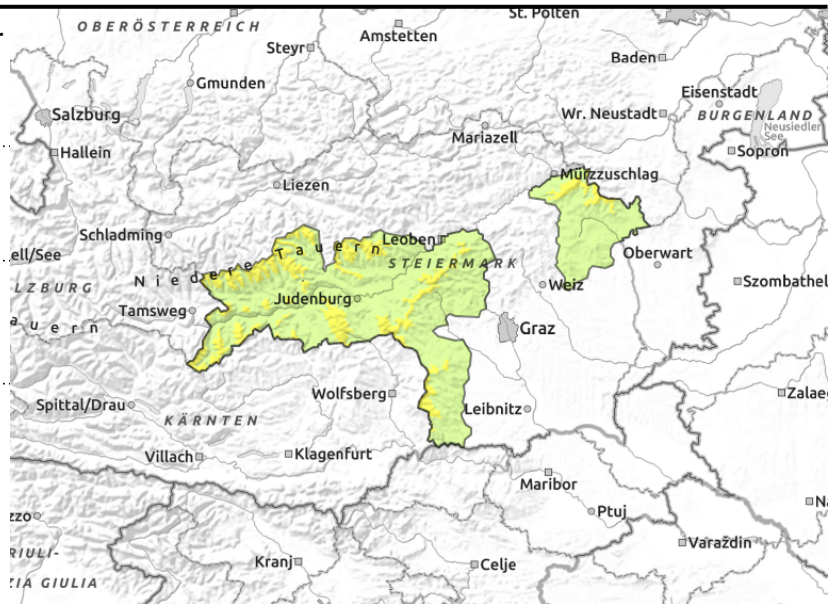
**Gaaler Alpen, Südliche Wölzer Tauern, Schladminger Tauern Süd, Gurktaler Alpen, Seetaler Alpen, Stub- und Gleinalpe, Östliche Fischbacher Alpen und Wechselgebiet, Koralpe**



in isolated cases



small, thin snowdrift accumulations



## Fresh high-altitude snowdrifts. Caution: isolated naturally triggered glide-snow avalanches.

New snowdrift accumulations have formed, danger zones occur above the timberline esp. on steep east-facing slopes behind discontinuities, and can be triggered by one person, releasing as a small slab avalanche. In encrusted or icy steep terrain, acute danger of falling. Most of the fresh snow is bonding poorly.

Despite lower temperatures, danger of naturally triggered glide-snow avalanches persists at all altitudes, in all aspects (esp. south-facing slopes) on steep grassy slopes they are possible and can reach large size and endanger exposed transportation routes. Avoid zones below glide cracks, they are indicators of potential danger.

### Snowpack structure

Up to 25 cm of fresh snow fell during the night of New Year's Eve, most from Turrach over Zirbitz to Koralpe, much less in Tauern and Northern Alps. Storm westerly winds formed thin drifts, bonding poorly with the encrusted old snowpack surface which is compact and without marked weak layers (a thick melt-freeze crust capable of bearing loads), riddled with water seepage channels, highly unpleasant for skiers. The snowpack is gliding downhill and cracking on its journey.

### Weather

An Atlantic front will reach the Eastern Alps in the form of a westerly high-altitude airstream, bringing clouds and gray skies during the night, hardly any precipitation, moderate westerly winds in the northern mountain ranges, higher temperatures (not on the southern flank of the Alps). At 2000 m: -3 to -1 degree; at 1500 m: -1 to +1 degree.

On Wednesday, increasing sunshine, mild. Westerly winds only light, moderate in the NE.

### Outlook

Avalanche danger levels are not expected to change significantly.

Translated by Jeffrey McCabe, [www.creativtrans.com](http://www.creativtrans.com)

#### Avalanche problems



#### Danger ratings



#### Expositions

