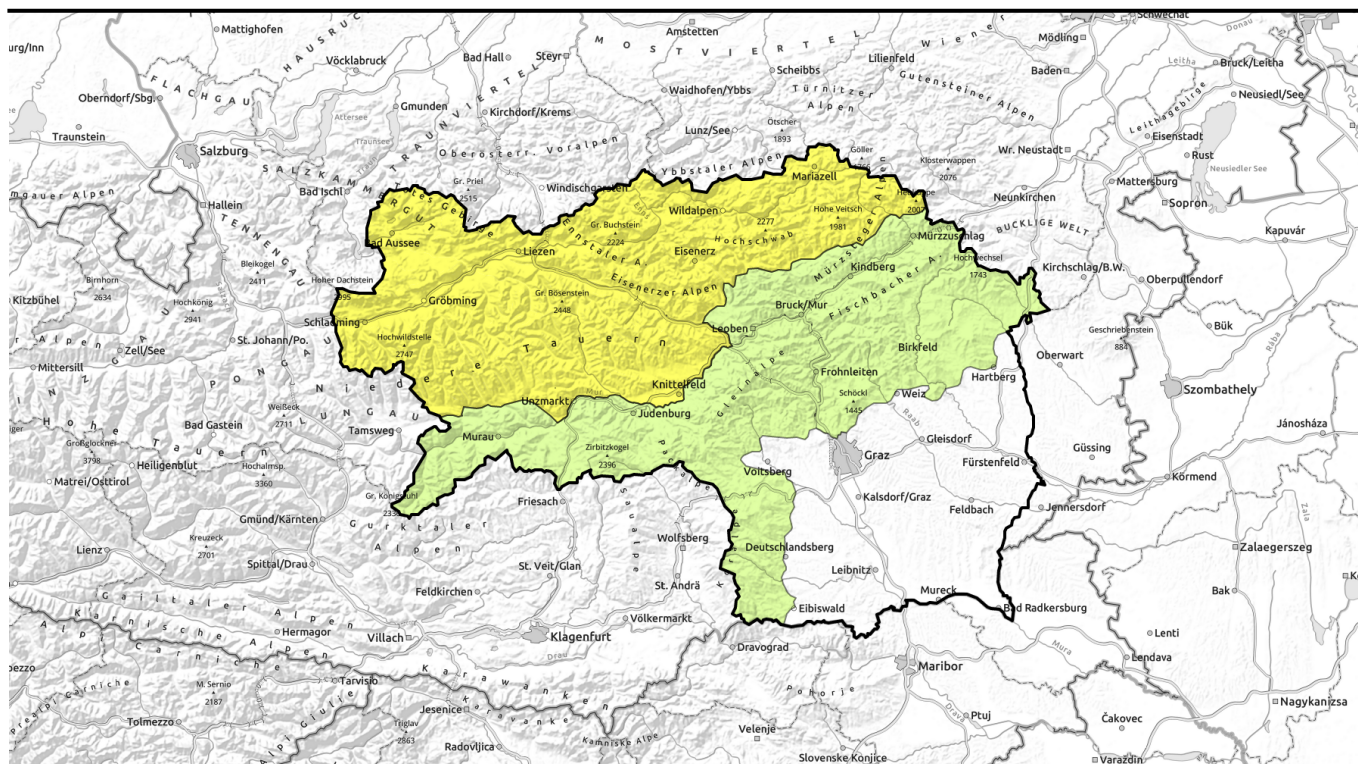


valid for: **Saturday, 30.12.2023**



## Glide-snow avalanches persist



Totes Gebirge, Dachsteingebiet, Schladminger Tauern Nord, Nördliche Wölzer Tauern, Ennstaler Alpen, Rottenmanner Tauern, Hochschwabgebiet, Eisenerzer Alpen, Mürztsteger Alpen, Triebener Tauern, Südliche Wölzer Tauern, Schladminger Tauern Süd, Gaaler Alpen



Koralpe, Westliche Fischbacher Alpen und Grazer Bergland, Stub- und Gleinalpe, Seetaler Alpen, Gurktaler Alpen, Östliche Fischbacher Alpen und Wechselgebiet, Mürztaler Alpen



### Avalanche problems



### Danger ratings

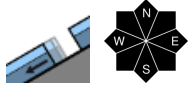
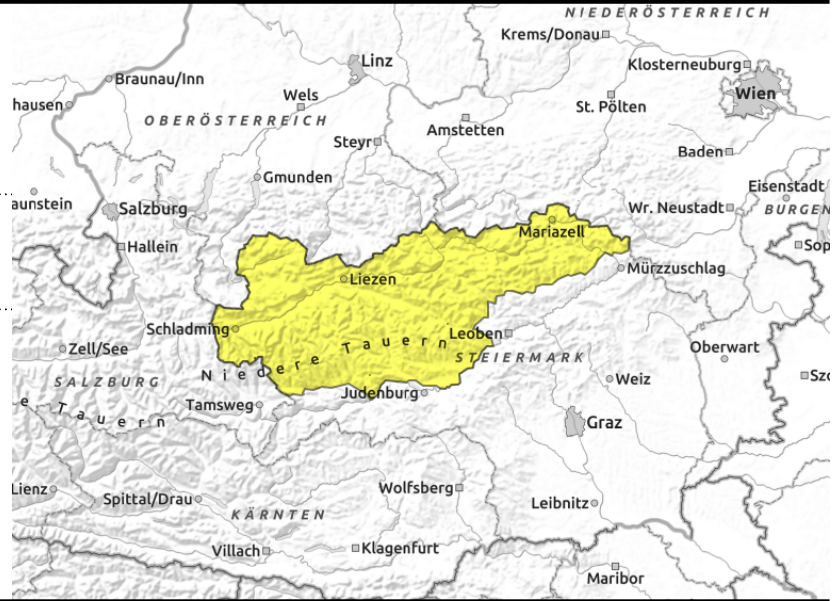


### Expositions



valid for: **Saturday, 30.12.2023**

Totes Gebirge, Dachsteingebiet, Schladminger Tauern Nord, Nördliche Wölzer Tauern, Ennstaler Alpen, Rottenmanner Tauern, Hochschwabgebiet, Eisenerzer Alpen, Mürzsteger Alpen, Triebener Tauern, Südliche Wölzer Tauern, Schladminger Tauern Süd, Gaaler Alpen



## Moderate danger due to naturally triggered glide-snow avalanches continues

Avalanche danger is moderate at all altitudes due to naturally triggered glide-snow avalanches. In all aspects on steep grass-covered slopes and in forest clearances, glide-snow and wet-snow avalanches can be expected, esp. in afternoon on south-facing slopes, which can in isolated cases place exposed transportation routes at risk. Open glide cracks are indicators of danger, zones near them should be avoided.

### Snowpack structure

Very irregular snow distribution. Whereas NW-facing slopes and exposed zones are often bare of snow, grass-covered wind-loaded slopes and gullies are filled to the brim. The snowpack is compact, without marked weak layers. Below 2000 m the snowpack is nearly isotherm, the ground is often wet. The snowpack is gliding downhill over smooth ground.

The snowpack surface below 2000 m is often riddled with water seepage channels (highly unpleasant for skiers), at high altitudes frozen and capable of bearing loads but on sunny slopes softening during daytime hours.

### Weather

The weekend of New Year's Eve will start out cooler, but still too mild for the season. At 2000 m: -3 degrees. Along the northern and eastern rims of the Alps, initially strong westerly winds, slackening off later in the day. Sunny by and large, but with residual clouds, In Niedere Tauern and southwards only moderate NW winds, milder and mostly sunny.

### Outlook

On New Year's Eve it will be warmer, the airstream will shift to southwesterly. In the Northern Alps it will remain sunny and mild, but clouds will move in from the south bringing stormy SW winds to the southern and eastern mountain ranges. Avalanche danger levels are not expected to change significantly.

#### Avalanche problems



#### Danger ratings



#### Expositions



valid for: **Saturday, 30.12.2023**

**Koralpe, Westliche Fischbacher Alpen und Grazer Bergland, Stub- und Gleinalpe, Seetaler Alpen, Gurktaler Alpen, Östliche Fischbacher Alpen und Wechselgebiet, Mürztaler Alpen**



isolated

## Generally low danger but caution urged towards naturally triggered glide-snow avalanches

Avalanche danger is generally low, but pay close heed to small, naturally triggered wet-snow and glide-snow slides esp on south-facing slopes during the course of the day. Danger zones occur on very steep grass-covered slopes, hillsides and in forest clearances. Open glide cracks are indicators of danger, avoid zones below them.

### Snowpack structure

Very irregular snow distribution. Whereas NW-facing slopes and exposed zones are often bare of snow, grass-covered wind-loaded slopes and gullies are filled to the brim. The snowpack is compact, without marked weak layers. The snowpack below 2000 m is nearly isotherm, the ground is often wet. The snowpack is gliding downhill over smooth ground. The surface at high altitudes is frozen, capable of bearing loads, but softens during the course of the day, at least on sunny slopes.

### Weather

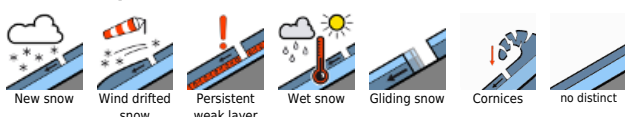
The weekend of New Year's Eve will start out cooler, but still too mild for the season. At 2000 m: -3 degrees. Along the northern and eastern rims of the Alps, initially strong westerly winds, slackening off later in the day. Sunny by and large, but with residual clouds, In Niedere Tauern and southwards only moderate NW winds, milder and mostly sunny.

### Outlook

On New Year's Eve it will be warmer, the airstream will shift to southwesterly. Clouds will move in during the course of the day, stormy SW winds will arise in the southern and eastern mountain ranges. Avalanche danger will remain low.

Translated by Jeffrey McCabe, [www.creativtrans.com](http://www.creativtrans.com)

#### Avalanche problems



#### Danger ratings



#### Expositions

