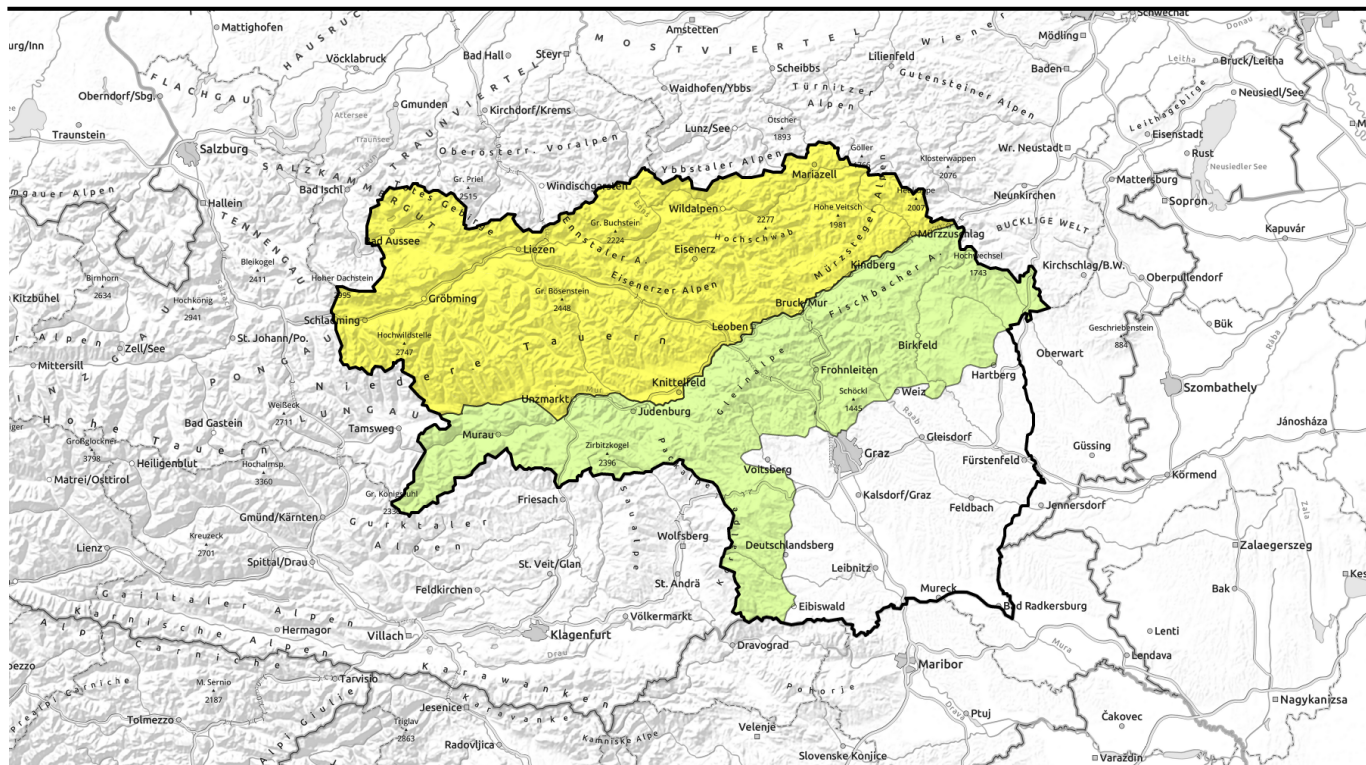


valid for: **Friday, 29.12.2023**



Glide-snow avalanches persist



Totes Gebirge, Dachsteingebiet, Schladminger Tauern Nord, Nördliche Wölzer Tauern, Ennstaler Alpen, Rottenmanner Tauern, Hochschwabgebiet, Eisenerzer Alpen, Mürzsteiger Alpen, Triebener Tauern, Südliche Wölzer Tauern, Schladminger Tauern Süd, Gaaler Alpen, Mürztaler Alpen



Koralpe, Westliche Fischbacher Alpen und Grazer Bergland, Stub- und Gleinalpe, Seetaler Alpen, Gurktaler Alpen, Östliche Fischbacher Alpen und Wechselgebiet



Avalanche problems



Danger ratings

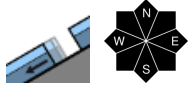


Expositions



valid for: **Friday, 29.12.2023**

Totes Gebirge, Dachsteingebiet, Schladminger Tauern Nord, Nördliche Wölzer Tauern, Ennstaler Alpen, Rottenmanner Tauern, Hochschwabgebiet, Eisenerzer Alpen, Mürzsteger Alpen, Triebener Tauern, Südliche Wölzer Tauern, Schladminger Tauern Süd, Gaaler Alpen, Mürztaler Alpen



Moderate danger due to naturally triggered glide-snow avalanches

Avalanche danger is moderate at all altitudes due to naturally triggered glide-snow avalanches. In all aspects on steep grass-covered slopes and in forest clearances, glide-snow and wet-snow avalanches can be expected, esp. in afternoon on south-facing slopes, which can in isolated cases place exposed transportation routes at risk. Open glide cracks are indicators of danger, zones near them should be circumvented.

Snowpack structure

Very irregular snow distribution. Whereas NW-facing slopes and exposed zones are often bare of snow, grass-covered wind-loaded slopes and gullies are filled to the brim. The snowpack is compact, without marked weak layers. Below 2000 m the snowpack is nearly isotherm, the ground is often wet. The snowpack is gliding downhill over smooth ground.

The snowpack surface is often riddled with water seepage channels (highly unpleasant for skiers), at high altitudes frozen and capable of bearing loads but on sunny slopes softening during daytime hours.

Weather

Friday will bring slightly lower temperatures, but still much too mild for this juncture of the season, along with quite mountain weather conditions. Initially in northern regions, heavy cloud and brisk westerly winds, but sunshine and quite conditions will soon prevail. In afternoon, thin clouds will pass through. Winds will be light to moderate from northwest. At 2000 m: +2 degrees, dropping slightly in evening.

Outlook

On Saturday, the gradual trend towards dropping temperatures will continue. It will remain largely sunny, variably cloudy. On the northern rim of the Alps, brisk westerly winds, southwards therefrom more tranquil conditions are expected. The gliding snow problem will persist, but slacken off in intensity.

Avalanche problems



Danger ratings



Expositions

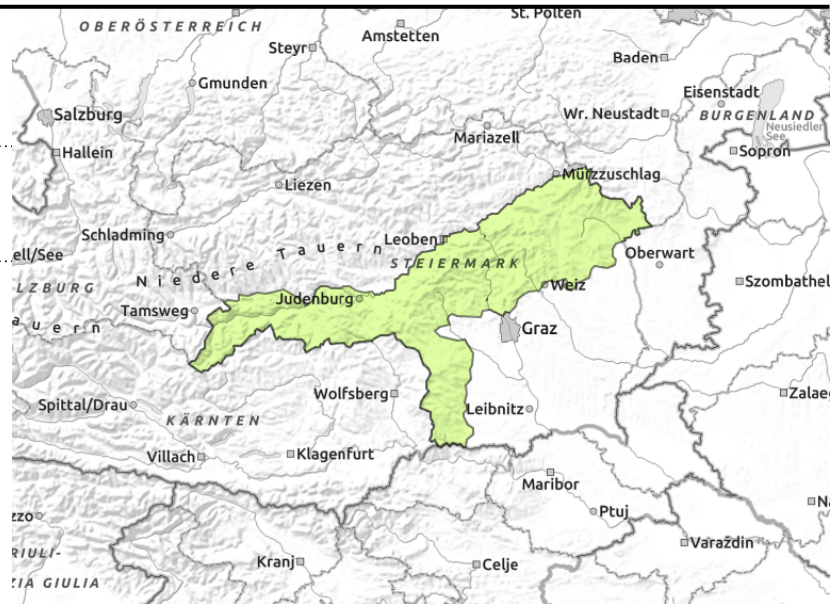


valid for: **Friday, 29.12.2023**

Koralpe, Westliche Fischbacher Alpen und Grazer Bergland, Stub- und Gleinalpe, Seetaler Alpen, Gurktaler Alpen, Östliche Fischbacher Alpen und Wechselgebiet



isolated



Generally low danger but caution urged towards naturally triggered glide-snow avalanches

Avalanche danger is generally low, but pay close heed to small, naturally triggered wet-snow and glide-snow slides esp on south-facing slopes during the course of the day. Danger zones occur on very steep grass-covered slopes, hillsides and in forest clearances. Open glide cracks are indicators of danger, avoid zones below them.

Snowpack structure

Very irregular snow distribution. Whereas NW-facing slopes and exposed zones are often bare of snow, grass-covered wind-loaded slopes and gullies are filled to the brim. The snowpack is compact, without marked weak layers. The snowpack below 2000 m is nearly isotherm, the ground is often wet. The snowpack is gliding downhill over smooth ground. The surface at high altitudes is frozen, capable of bearing loads, but softens during the course of the day, at least on sunny slopes.

Weather

Friday will bring slightly lower temperatures, but still much too mild for this juncture of the season, along with quite mountain weather conditions. Initially in northern regions, heavy cloud and brisk westerly winds, but sunshine and quite conditions will soon prevail. In afternoon, thin clouds will pass through. Winds will be light to moderate from northwest. At 2000 m: +2 degrees, dropping slightly in evening.

Outlook

On Saturday, the gradual trend towards dropping temperatures will continue. It will remain largely sunny, variably cloudy. On the northern rim of the Alps, light-to-moderate westerly winds. Avalanche danger will remain low.

Translated by Jeffrey McCabe, www.creativtrans.com

Avalanche problems



Danger ratings



Expositions

