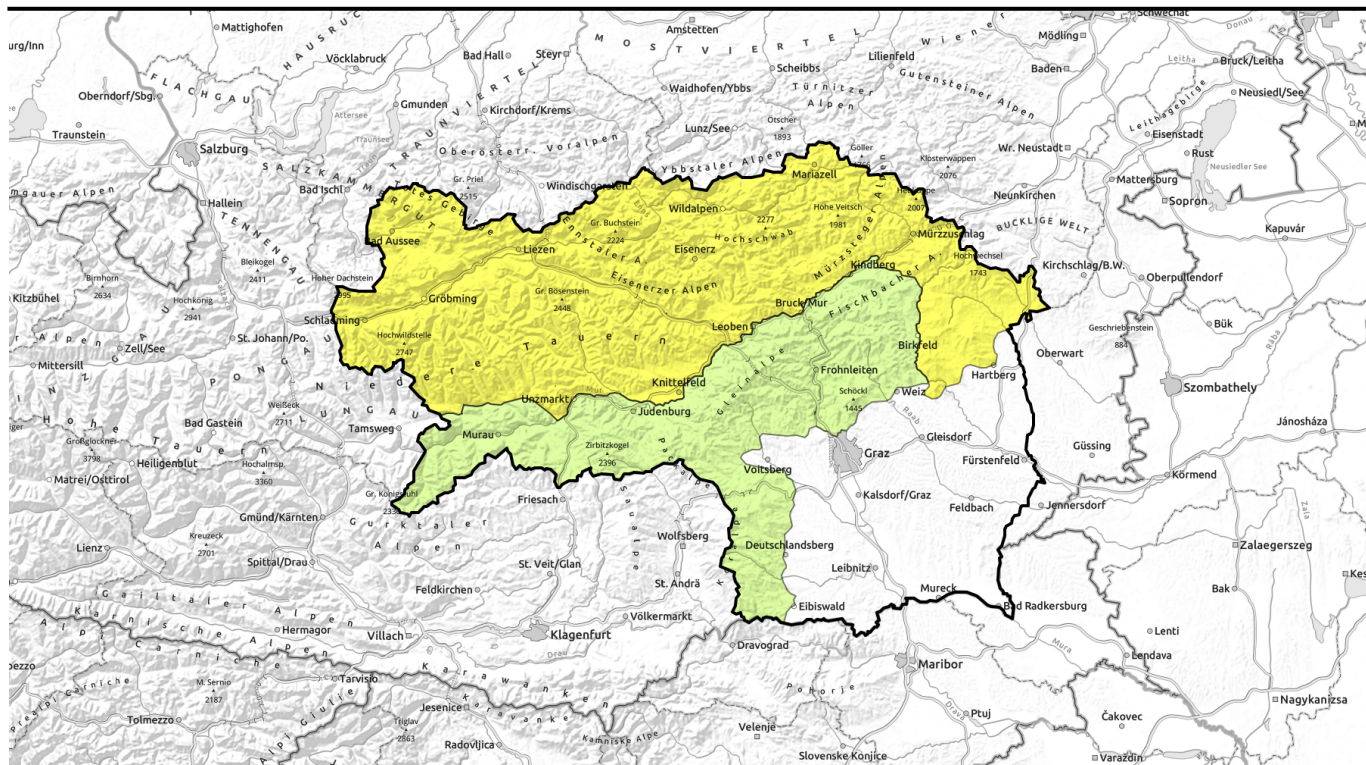


valid for: **Thursday, 28.12.2023**



## Glide-snow avalanches persist



Totes Gebirge, Dachsteingebiet, Schladminger Tauern Nord, Nördliche Wölzer Tauern, Ennstaler Alpen, Rottenmanner Tauern, Hochschwabgebiet, Eisenerzer Alpen, Mürzsteger Alpen, Triebener Tauern, Südliche Wölzer Tauern, Schladminger Tauern Süd, Gaaler Alpen, Mürztaler Alpen, Östliche Fischbacher Alpen und Wechselgebiet



Koralpe, Westliche Fischbacher Alpen und Grazer Bergland, Stub- und Gleinalpe, Seetaler Alpen, Gurktaler Alpen



### Avalanche problems



### Danger ratings

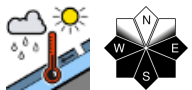
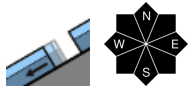


### Expositions



valid for: **Thursday, 28.12.2023**

Totes Gebirge, Dachsteingebiet, Schladminger Tauern Nord, Nördliche Wölzer Tauern, Ennstaler Alpen, Rottenmanner Tauern, Hochschwabgebiet, Eisenerzer Alpen, Mürzsteger Alpen, Triebener Tauern, Südliche Wölzer Tauern, Schladminger Tauern Süd, Gaaler Alpen, Mürztaler Alpen, Östliche Fischbacher Alpen und Wechselgebiet



## Moderate danger due to glide-snow, wet-snow avalanches

Avalanche danger is moderate at all altitudes due to glide-snow and wet-snow avalanche problem. In all aspects on steep grass-covered slopes and in forest clearances, glide-snow and wet-snow avalanches can be expected, esp. in afternoon on south-facing slopes, which can in isolated cases place exposed transportation routes at risk. Open glide cracks are indicators of danger, zones near them should be avoided.

### Snowpack structure

Very irregular snow distribution. Whereas NW-facing slopes and exposed zones are often bare of snow, grass-covered wind-loaded slopes and gullies are filled to the brim. The snowpack is compact, without marked weak layers. Below 2000 m the snowpack is nearly isotherm, the ground is often wet. The snowpack is gliding downhill over smooth ground.

The snowpack surface is often riddled with water seepage channels, at high altitudes frozen and capable of bearing loads but on sunny slopes softening during daytime hours.

### Weather

On Thursday, lots of sunshine, nearly cloudless skies. In the afternoon some high altitude clouds will move in from the west. Winds will be light to moderate from westerly directions. At 2000 m: +3 degrees, much too warm for this juncture of the season.

### Outlook

Also on Friday, sunny and mild. Danger of glide-snow and wet-snow avalanches will persist, but slacken off in intensity.

#### Avalanche problems



#### Danger ratings

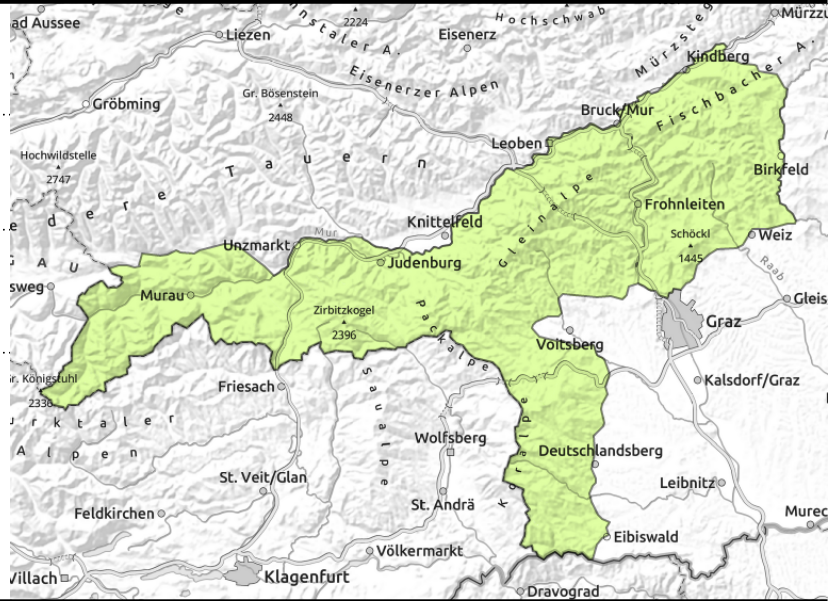


#### Expositions



valid for: **Thursday, 28.12.2023**

**Koralpe, Westliche Fischbacher Alpen und Grazer Bergland, Stub- und Gleinalpe, Seetaler Alpen, Gurktaler Alpen**



isolated



small wet-snow avalanches

**Generally low danger but caution urged towards naturally triggered wet-snow, glide-snow avalanches**

Avalanche danger is generally low, but pay close heed to small, naturally triggered wet-snow and glide-snow slides esp on south-facing slopes during the course of the day. Danger zones occur on very steep grass-covered slopes, hillsides and in forest clearances. Open glide cracks are indicators of danger, circumvent zones below them.

**Snowpack structure**

Very irregular snow distribution. Whereas NW-facing slopes and exposed zones are often bare of snow, grass-covered wind-loaded slopes and gullies are filled to the brim. The snowpack is compact, without marked weak layers. The snowpack below 2000 m is nearly isotherm, the ground is often wet. The snowpack is gliding downhill over smooth ground. The surface at high altitudes is frozen, capable of bearing loads, but softens during the course of the day, at least on sunny slopes.

**Weather**

On Thursday, lots of sunshine, nearly cloudless skies. In the afternoon some high altitude clouds will move in from the west. Winds will be light to moderate from westerly directions. At 2000 m: +3 degrees, much too warm for this juncture of the season.

**Outlook**

Also on Friday, sunny and mild. Danger of glide-snow and wet-snow avalanches will persist, but slacken off in intensity.

Translated by Jeffrey McCabe, [www.creativtrans.com](http://www.creativtrans.com)

**Avalanche problems**



**Danger ratings**



**Expositions**

