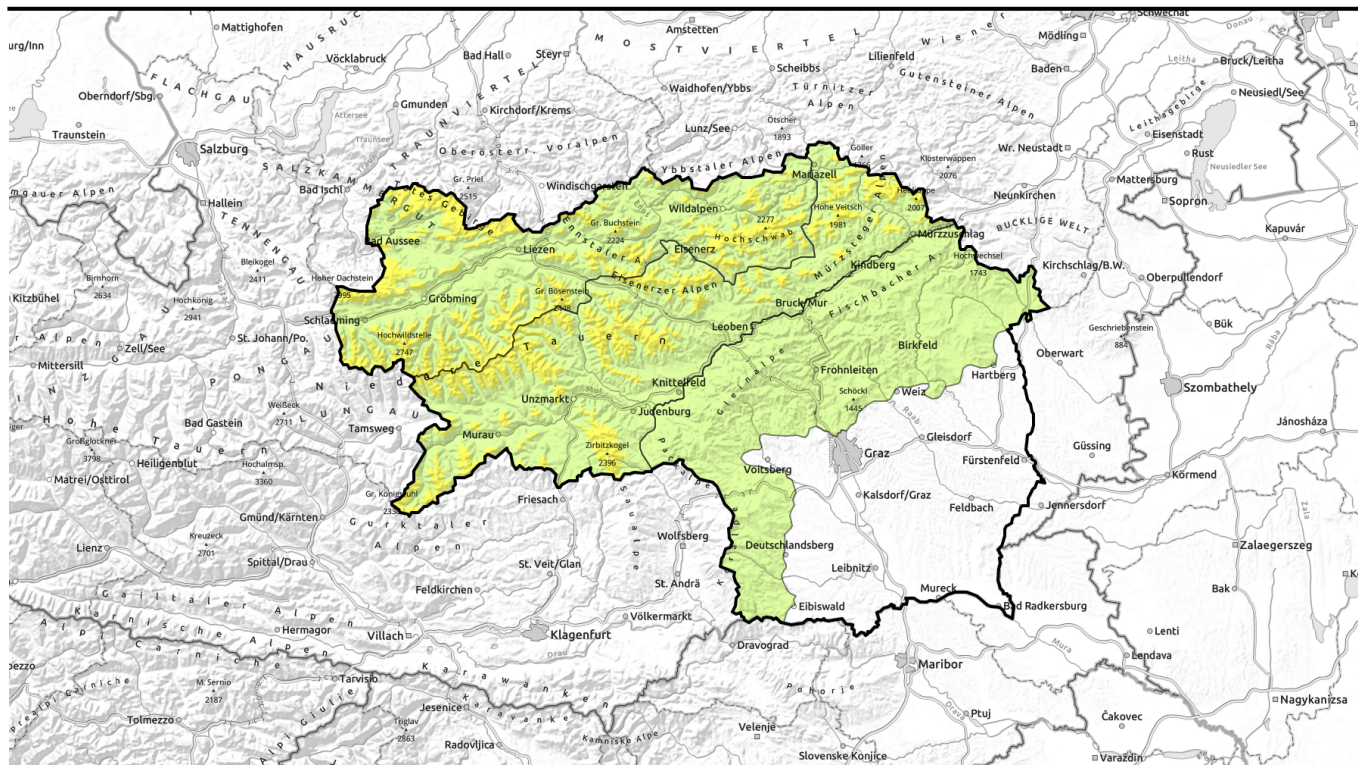








valid for: **Thursday, 21.12.2023**



Stormy mountain weather. Caution urged towards fresh drifts.

	<p>1500 m Schladminger Tauern Süd, Mürztaler Alpen, Gurktaler Alpen, Seetaler Alpen, Gaaler Alpen, Triebener Tauern, Südliche Wölzer Tauern, Eisenerzer Alpen, Mürzsteger Alpen</p>	
	<p>Westliche Fischbacher Alpen und Grazer Bergland, Östliche Fischbacher Alpen und Wechselgebiet, Koralmpe, Stub- und Gleinalpe</p>	
	<p>1500 m Dachsteingebiet, Totes Gebirge, Schladminger Tauern Nord, Ennstaler Alpen, Hochschwabgebiet, Nördliche Wölzer Tauern, Rottenmanner Tauern</p>	

Avalanche problems



Danger ratings

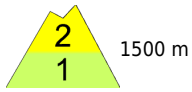
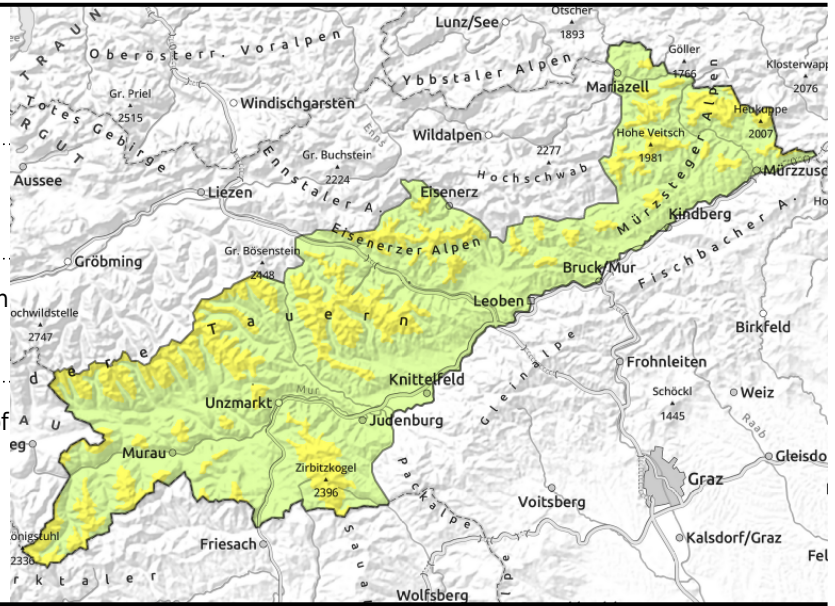


Expositions



valid for: **Thursday, 21.12.2023**

Schladinger Tauern Süd, Mürztaler Alpen, Gurktaler Alpen, Seetaler Alpen, Gaaler Alpen, Triebener Tauern, Südliche Wölzer Tauern, Eisenerzer Alpen, Mürzsteger Alpen



fresh wind-loaded zones at high altitudes

isolated, possible at any time of day

Caution: fresh snowdrift accumulations at high altitudes. Still beware glide-snow avalanches.

As of intermediate altitudes, avalanche danger is moderate. On very steep wooded and grassy slopes and smooth rocky slopes in all aspects, glide-snow avalanches can still release, mostly small-to-medium. Avoid zones below glide cracks. Minor fresh snow and brisk W/NW winds will form small fresh snowdrifts. Older drifts seldom prone to triggering.

Snowpack structure

The snowpack is stabilizing due to lower temperatures, regaining firmness on the surface. The snowpack base is moist/wet, which leads to a gliding snow problem. On shady slopes the surface is often still dry, but faceted crystals and surface hoar can form, atop of which fresh snow and drifts get deposited, bonding is often poor. On higher-altitude shady slopes, faceted crystals near deeply embedded melt-freeze crusts weaken the snowpack.

Weather

Brisk (higher up, stormy) W/NW winds are bringing some snowfall to the northern flank of the Alps. Milder: snowfall level will ascend to nearly 1300 m. South of the Alps, conditions are more pleasant, longer periods of sunshine. At 2000 m: -2 degrees at midday, in the evening the precipitation will intensify on the northern flank of the Alps and winds will get stronger.

Outlook

Northern barrier clouds, inhospitable conditions. Strong NW winds, gusts at gale strength, snowfall in Upper Styria will be heavy and persistent. Avalanche danger increasing.

Avalanche problems



Danger ratings



Expositions

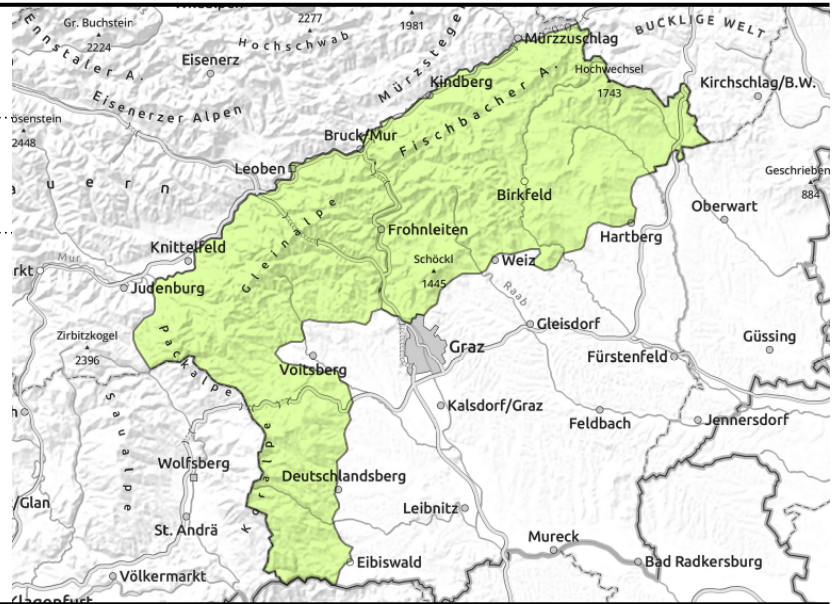


valid for: **Thursday, 21.12.2023**

**Westliche Fischbacher Alpen und Grazer Bergland,
Östliche Fischbacher Alpen und Wechselgebiet,
Koralpe, Stub- und Gleinalpe**



small, very isolated snowdrift patches



Low avalanche danger. Isolated danger zones due to snowdrifts.

Avalanche danger is low. The snowpack is stabilizing in the lower temperatures, but isolated naturally triggered glide-snow avalanches are still possible on steep grassy slopes or leaf-covered ground where there is sufficient snow on the ground.

Snowpack structure

The thoroughly wet snowpack is stabilizing due to lower temperatures, regaining firmness on the surface. The snowpack base is moist/wet, which leads to a gliding snow problem. On leeward slopes, small snowdrift patches.

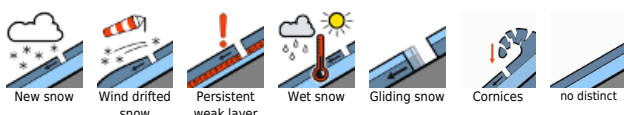
Weather

Brisk (higher up, stormy) W/NW winds are bringing some snowfall to the northern flank of the Alps. Milder: snowfall level will ascend to nearly 1300 m. South of the Alps, conditions are more pleasant, longer periods of sunshine. At 2000 m: -2 degrees at midday, in the evening the precipitation will intensify on the northern flank of the Alps and winds will get stronger.

Outlook

Northern barrier clouds, inhospitable conditions. Strong NW winds, gusts at gale strength, snowfall in Upper Styria will be heavy and persistent. Avalanche danger increasing.

Avalanche problems



Danger ratings

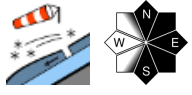


Expositions

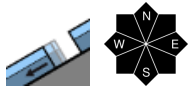


valid for: **Thursday, 21.12.2023**

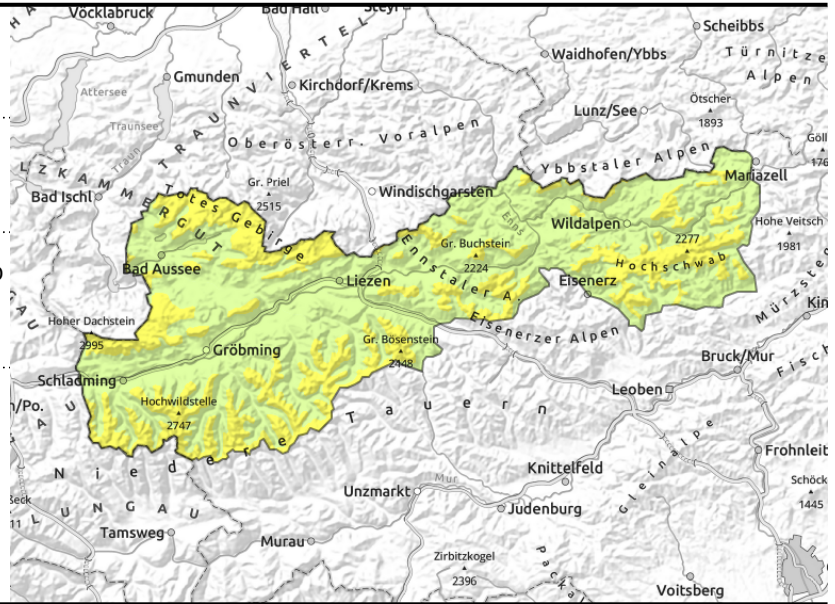
Dachsteingebiet, Totes Gebirge, Schladminger Tauern Nord, Ennstaler Alpen, Hochschwabgebiet, Nördliche Wölzer Tauern, Rottenmanner Tauern

increasing danger zones due to heavy snowfall starting in afternoon



isolated, at any time of day



Caution: fresh, increasingly frequent snowdrift accumulations. Beware still: glide-snow avalanches.

As of intermediate altitudes, avalanche danger is moderate. On very steep wooded and grassy slopes and smooth rocky slopes in all aspects, glide-snow avalanches can still release, mostly small-to-medium. Avoid zones below glide cracks.

Increasing amounts of fresh snow and brisk W/NW winds will form small fresh snowdrifts. Slab avalanches can be triggered by 1 person behind protruberances, in gullies and bowls and in wooded zones. Danger zones increase with ascending altitude. Danger zones hard to recognize.

Snowpack structure

The snowpack is stabilizing due to lower temperatures, regaining firmness on the surface. The snowpack base is moist/wet, which leads to a gliding snow problem. On shady slopes the surface is often still dry, but faceted crystals and surface hoar can form, atop of which fresh snow and drifts get deposited, bonding is often poor. On higher-altitude shady slopes, faceted crystals near deeply embedded melt-freeze crusts weaken the snowpack.

Weather

Brisk (higher up, stormy) W/NW winds are bringing some snowfall to the northern flank of the Alps. Milder: snowfall level will ascend to nearly 1300 m. South of the Alps, conditions are more pleasant, longer periods of sunshine. At 2000 m: -2 degrees at midday, in the evening the precipitation will intensify on the northern flank of the Alps and winds will get stronger.

Outlook

Northern barrier clouds, inhospitable conditions. Strong NW winds, gusts at gale strength, snowfall in Upper Styria will be heavy and persistent. Avalanche danger increasing.

Translated by Jeffrey McCabe, www.creativtrans.com

Avalanche problems



Danger ratings



Expositions

