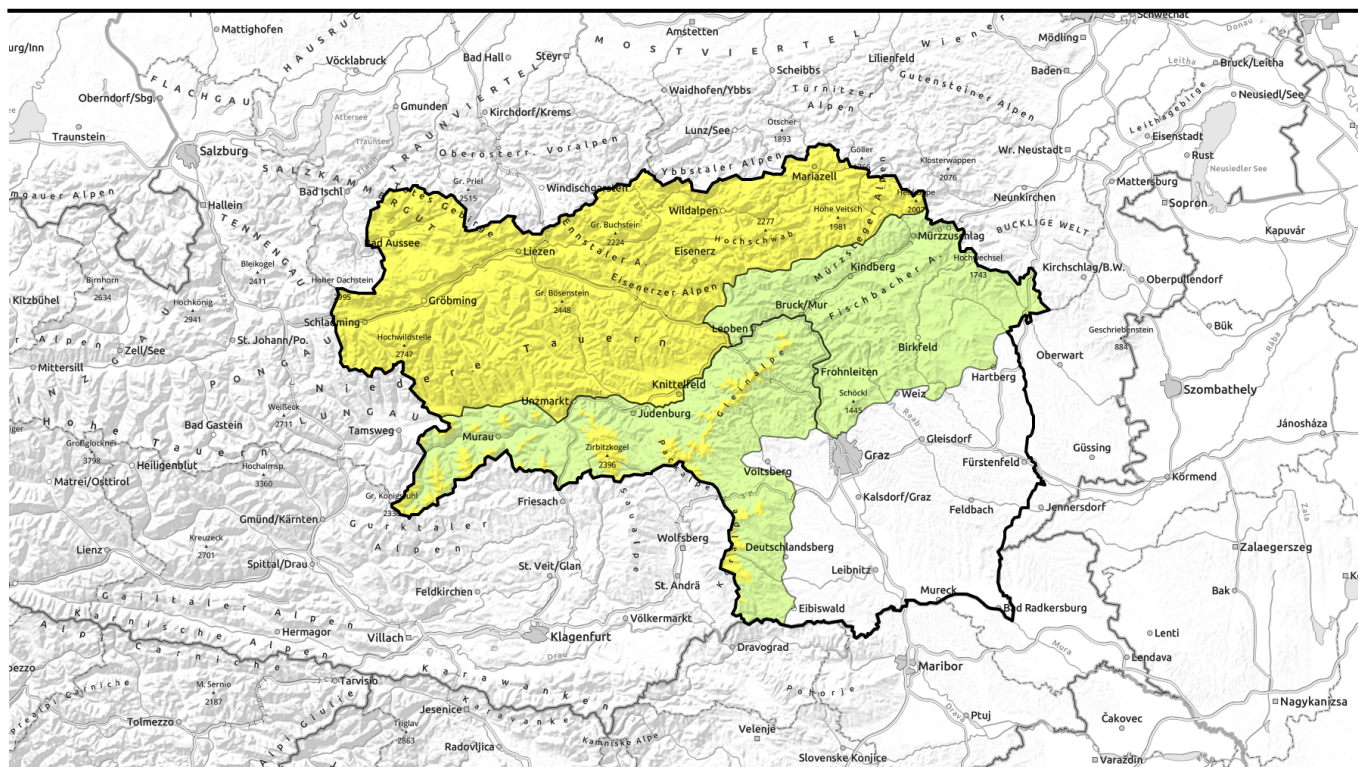







valid for: **Monday, 18.12.2023**



## Still mostly sunshine, strikingly higher temperatures. Beware increasing wet-snow/glide-snow activity.

	<p>Totes Gebirge, Dachsteingebiet, Schladminger Tauern Nord, Rottenmanner Tauern, Nördliche Wölzer Tauern, Ennstaler Alpen, Hochschwabgebiet, Murzsteger Alpen, Eisenerzer Alpen, Südliche Wölzer Tauern, Triebener Tauern, Schladminger Tauern Süd, Gaaler Alpen</p>	
	<p>1200 m Stub- und Gleinalpe, Seetaler Alpen, Gurktaler Alpen, Korralpe</p>	
	<p>Mürztaler Alpen, Westliche Fischbacher Alpen und Grazer Bergland, Östliche Fischbacher Alpen und Wechselgebiet</p>	

### Avalanche problems



### Danger ratings

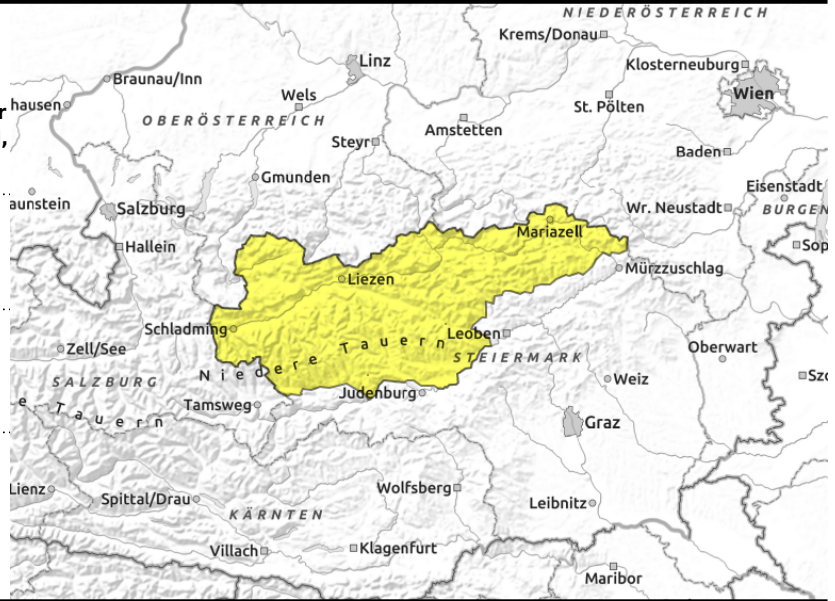


### Expositions



valid for: **Monday, 18.12.2023**

Totes Gebirge, Dachsteingebiet, Schladminger Tauern Nord, Rottenmanner Tauern, Nördliche Wölzer Tauern, Ennstaler Alpen, Hochschwabgebiet, Mürzsteiger Alpen, Eisenerzer Alpen, Südliche Wölzer Tauern, Triebener Tauern, Schladminger Tauern Süd, Gaaler Alpen



naturally triggered avalanches increasing during daytime



possible at any time of day, avoid zones below glide cracks

### Main danger: wet-snow/glide-snow avalanches

Above the treeline avalanche danger is moderate. Main danger: naturally triggered loose-snow and slab avalanches in very steep sunny terrain. Likelihood of triggering increases during the course of the day.

In very steep wooded and grassy terrain, esp. on sunny slopes, glide-snow avalanches can be expected. Avoid zones below glide cracks.

Snowdrift accumulations settled and calmed. In high-altitude shady terrain where there are reserves of cold in the snowpack, snowdrifts can be triggered as slab avalanches.

### Snowpack structure

Due to strikingly higher temperatures the snowpack was able to settle up to high altitudes. During the night of clear skies the snowpack surface will consolidate. Solar radiation and extremely mild temperatures will make the snowpack forfeit its firmness on sunny slopes and destabilize it, generating more naturally triggered moist avalanches.

As the snowpack becomes wetter, gliding snow activity will increase on very steep, sunny slopes. Trigger-sensitive snowpack accumulations lie deposited atop a melt-freeze encrusted snowpack surface in isolated cases at high altitudes. Weak layers lie inside the drifted masses (soft layers, graupel).

### Weather

A powerful high over the Azores will extend as far as the Eastern Alps and determine weather conditions: mild and sunny. Light northerly winds, the zero-degree level will ascend to over 3000 m. At 2000 m: +8 degrees.

### Outlook

High-pressure front effects will persist until Tuesday, then turbulent conditions are expected and dropping temperatures. For the moment, no significant change.

#### Avalanche problems



#### Danger ratings




#### Expositions




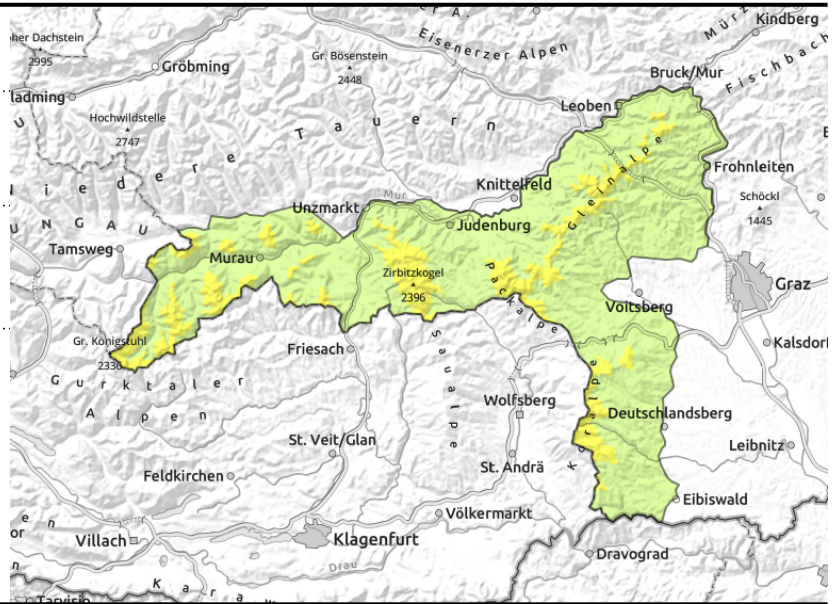
valid for: **Monday, 18.12.2023**

**Stub- und Gleinalpe, Seetaler Alpen, Gurktaler Alpen, Koralpe**



 naturally triggered avalanches increasing during daytime

 possible at any time of day, avoid zones below glide cracks



**Main danger: wet-snow/glide-snow avalanches**

At intermediate and high altitudes, avalanche danger is moderate. Main danger: naturally triggered loose-snow and slab avalanches in very steep sunny terrain. Likelihood of triggering increases during the course of the day.

In very steep wooded and grassy terrain, esp. on sunny slopes, glide-snow avalanches can be expected. Avoid zones below glide cracks.

Snowdrift accumulations settled and calmed. In high-altitude shady terrain where there are reserves of cold in the snowpack, snowdrifts can be triggered as slab avalanches.

**Snowpack structure**

Due to strikingly higher temperatures the snowpack was able to settle up to high altitudes. During the night of clear skies the snowpack surface will consolidate. Solar radiation and extremely mild temperatures will make the snowpack forfeit its firmness on sunny slopes and destabilize it, generating more naturally triggered moist avalanches.

As the snowpack becomes wetter, gliding snow activity will increase on very steep, sunny slopes. Trigger-sensitive snowpack accumulations lie deposited atop a melt-freeze encrusted snowpack surface in isolated cases at high altitudes. Weak layers lie inside the drifted masses (soft layers, graupel).

**Weather**

A powerful high over the Azores will extend as far as the Eastern Alps and determine weather conditions: mild and sunny. Light northerly winds, the zero-degree level will ascend to over 3000 m. At 2000 m: +8 degrees.

**Outlook**

High-pressure front effects will persist with cloudless skies, the snowpack will settle further in the warmth. Likelihood of wet loose-snow avalanches and glide-snow avalanches on very steep sunny slopes will increase.

**Avalanche problems**



**Danger ratings**



**Expositions**



valid for: **Monday, 18.12.2023**

**Mürztaler Alpen, Westliche Fischbacher Alpen und Grazer Bergland, Östliche Fischbacher Alpen und Wechselgebiet**



possible at any time of day, small-sized and isolated



**Low avalanche danger**

Avalanche danger is low. In regions where there is more snow on the ground, small wet-snow slides and loose-snow avalanches can release on very steep slopes. On steep grassy slopes or over leaf-covered ground, a sufficiently deep snowpack can glide downhill.

**Snowpack structure**

Due to strikingly higher temperatures the snowpack was able to settle up to high altitudes. During the night of clear skies the snowpack surface will consolidate. Solar radiation and extremely mild temperatures will make the snowpack forfeit its firmness on sunny slopes and destabilize it, generating more naturally triggered moist avalanches.

**Weather**

A powerful high over the Azores will extend as far as the Eastern Alps and determine weather conditions: mild and sunny. Light northerly winds, the zero-degree level will ascend to over 3000 m. At 2000 m: +8 degrees.

**Outlook**

High-pressure front effects will persist until Tuesday, then turbulent conditions are expected and dropping temperatures. For the moment, no significant change

Translated by Jeffrey McCabe, [www.creativtrans.com](http://www.creativtrans.com)

**Avalanche problems**



**Danger ratings**



**Expositions**

