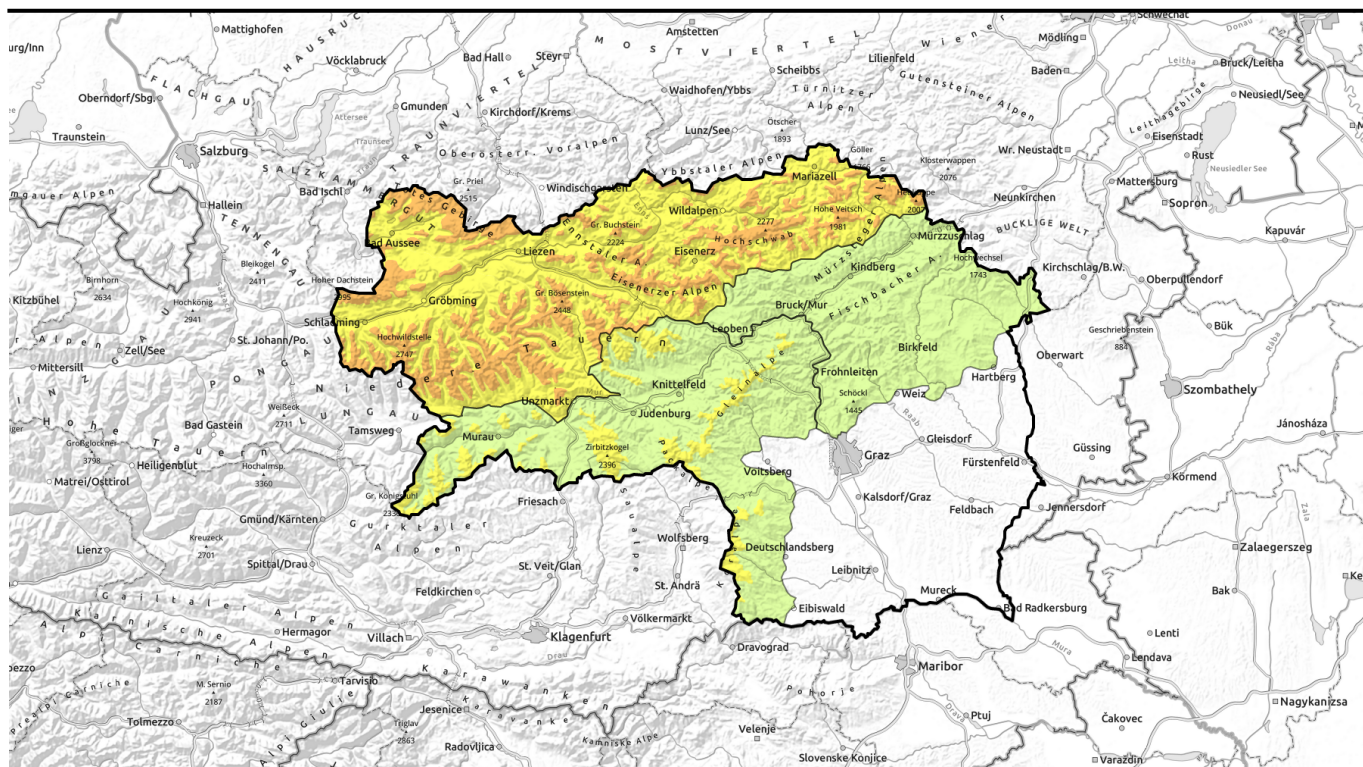

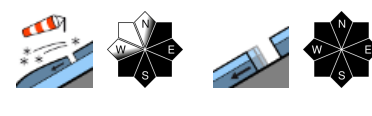






valid for: **Saturday, 16.12.2023**



Fresh snowdrifts highly prone to triggering. Gliding snow problem receding.

	<p>3 2 forestline</p> <p>Totes Gebirge, Dachsteingebiet, Schladminger Tauern Nord, Rottenmanner Tauern, Nördliche Wölzer Tauern, Ennstaler Alpen, Hochschwabgebiet, Mürzsteger Alpen, Eisenerzer Alpen, Südliche Wölzer Tauern, Triebener Tauern, Schladminger Tauern Süd</p>	
	<p>2 1 forestline</p> <p>Stub- und Gleinalpe, Seetaler Alpen, Gurktaler Alpen, Gaaler Alpen, Koralpe</p>	
	<p>1</p> <p>Mürztaler Alpen, Westliche Fischbacher Alpen und Grazer Bergland, Östliche Fischbacher Alpen und Wechselgebiet</p>	

Avalanche problems



Danger ratings

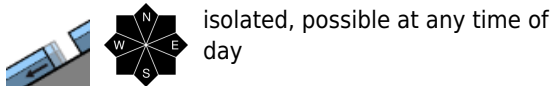
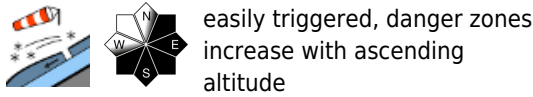
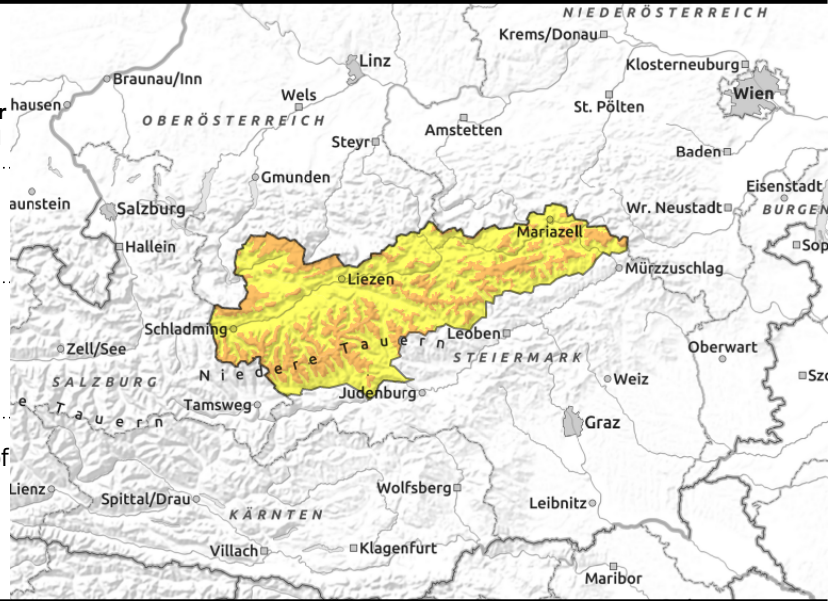


Expositions



valid for: **Saturday, 16.12.2023**

Totes Gebirge, Dachsteingebiet, Schladminger Tauern Nord, Rottenmanner Tauern, Nördliche Wölzer Tauern, Ennstaler Alpen, Hochschwabgebiet, Mürzsteiger Alpen, Eisenerzer Alpen, Südliche Wölzer Tauern, Triebener Tauern, Schladminger Tauern Süd



Beware trigger-sensitive snowdrifts

Above the treeline avalanche danger is considerable. Danger zones occur with the freshly generated snowdrift accumulations, esp. in extended S/E facing terrain, where 1 person can trigger an avalanche, especially in gullies, bowls, behind protruberances, medium-sized slab avalanches can be triggered by 1 person. Danger zones increase with ascending altitude.

The gliding snow problem is receding. On very steep grass-covered slopes or smooth rocks, isolated glide-snow avalanches can release in all aspects. Avoid zones below glide cracks.

Snowpack structure

Over the last 48 hours there has been 20-40 cm of fresh snow registered, most of it accompanied by strong wind impact, generating trigger-sensitive snowdrift accumulations on melt-freeze encrusted snowpack surfaces. Weak layers lurk inside the snowdrifts and soft layers in the form of faceted crystals, esp. in transitions to the old snow. At intermediate altitudes the drifts are better bonded with the old snowpack.

Due to rain impact the snowpack is often wet at intermediate altitudes, can glide over the ground on very steep slopes.

Weather

On Saturday in the Northern Alps, gray skies, heavy cloud cover, many peaks veiled in fog, occasional light snowfall, soon tapering off. In the afternoon, bright, sunny intervals will become more frequent. In the rimline ranges, brilliant sunshine after the fog has dispersed. The NW winds will slacken off but still be brisk in exposed terrain. At 2000 m: -7 degrees at midday, temperatures rising in the evening.

Outlook

High-pressure front effects on Sunday will create mostly sunny weather, mild temperatures at all altitudes. The snowdrift problem will recede, the wet-snow problem will be at the forefront in regions where fresh snow is ample.

Avalanche problems



Danger ratings

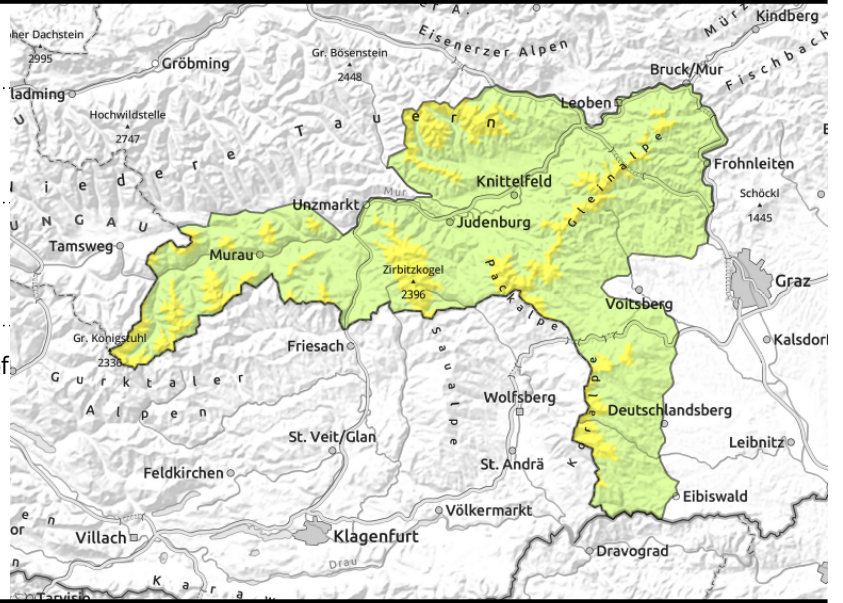
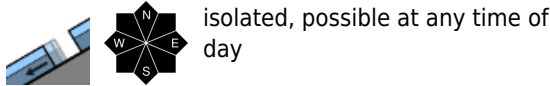


Expositions



valid for: **Saturday, 16.12.2023**

Stub- und Gleinalpe, Seetaler Alpen, Gurktaler Alpen, Gaaler Alpen, Korralpe



Beware trigger-sensitive snowdrifts

Above the treeline avalanche danger is moderate. Danger zones are from trigger-sensitive snowdrift accumulations, esp, in extended S/E facing terrain. At entries to gullies and bowls and behind protruberances, slab avalanches can be triggered by 1 person. Danger zones increase with ascending altitude.

The gliding snow problem is receding. On very steep grass-covered slopes or smooth rocks, isolated glide-snow avalanches can release in all aspects.

Snowpack structure

The fresh snow from Wednesday and Thursday (up to 30 cm) has been transported by strong winds, generating snowdrift accumulations which are prone to triggering, deposited atop a melt-freeze encrusted snowpack surface. Weak layers lurk inside the snowdrifts and soft layers in the form of faceted crystals, esp. in transitions to the old snow. At intermediate altitudes the drifts are better bonded with the old snowpack.

The snowpack at intermediate altitudes is often thoroughly wet, can glide away on very steep slopes.

Weather

On Saturday in the Northern Alps, gray skies, heavy cloud cover, many peaks veiled in fog, occasional light snowfall, soon tapering off. In the afternoon, bright, sunny intervals will become more frequent. In the rimline ranges, brilliant sunshine after the fog has dispersed. The NW winds will slacken off but still be brisk in exposed terrain. At 2000 m: -7 degrees at midday, temperatures rising in the evening.

Outlook

High-pressure front effects on Sunday will create mostly sunny weather, mild temperatures at all altitudes. The snowdrift problem will recede, the wet-snow problem will be at the forefront in regions where fresh snow is ample.

Avalanche problems



Danger ratings



Expositions



valid for: **Saturday, 16.12.2023**

Mürztaler Alpen, Westliche Fischbacher Alpen und Grazer Bergland, Östliche Fischbacher Alpen und Wechselgebiet



trigger-sensitive snowdrift patches



isolated gliding snowslides possible



Beware small snowdrift patches

Avalanche danger is predominantly low. Fresh snowpack patches are sometimes prone to triggering, especially dangerous since they force one to take a fall. On steep grassy slopes where the snowpack is deep enough, isolated glide-snow avalanches are possible.

Snowpack structure

The snowpack is melt-freeze encrusted up to high altitudes or moist - and therefore, well settled. The minor amounts of fresh snow lies deposited atop the encrusted snowpack as thin snowdrift patches, bonding is poor.

Weather

On Saturday in the Northern Alps, gray skies, heavy cloud cover, many peaks veiled in fog, occasional light snowfall, soon tapering off. In the afternoon, bright, sunny intervals will become more frequent. In the rimline ranges, brilliant sunshine after the fog has dispersed. The NW winds will slacken off but still be brisk in exposed terrain. At 2000 m: -7 degrees at midday, temperatures rising in the evening.

Outlook

High-pressure front effects on Sunday will create mostly sunny weather, mild temperatures at all altitudes. The snowdrift problem will recede, the wet-snow problem will be at the forefront in regions where fresh snow is ample.

Translated by Jeffrey McCabe, www.creativtrans.com

Avalanche problems



Danger ratings



Expositions

