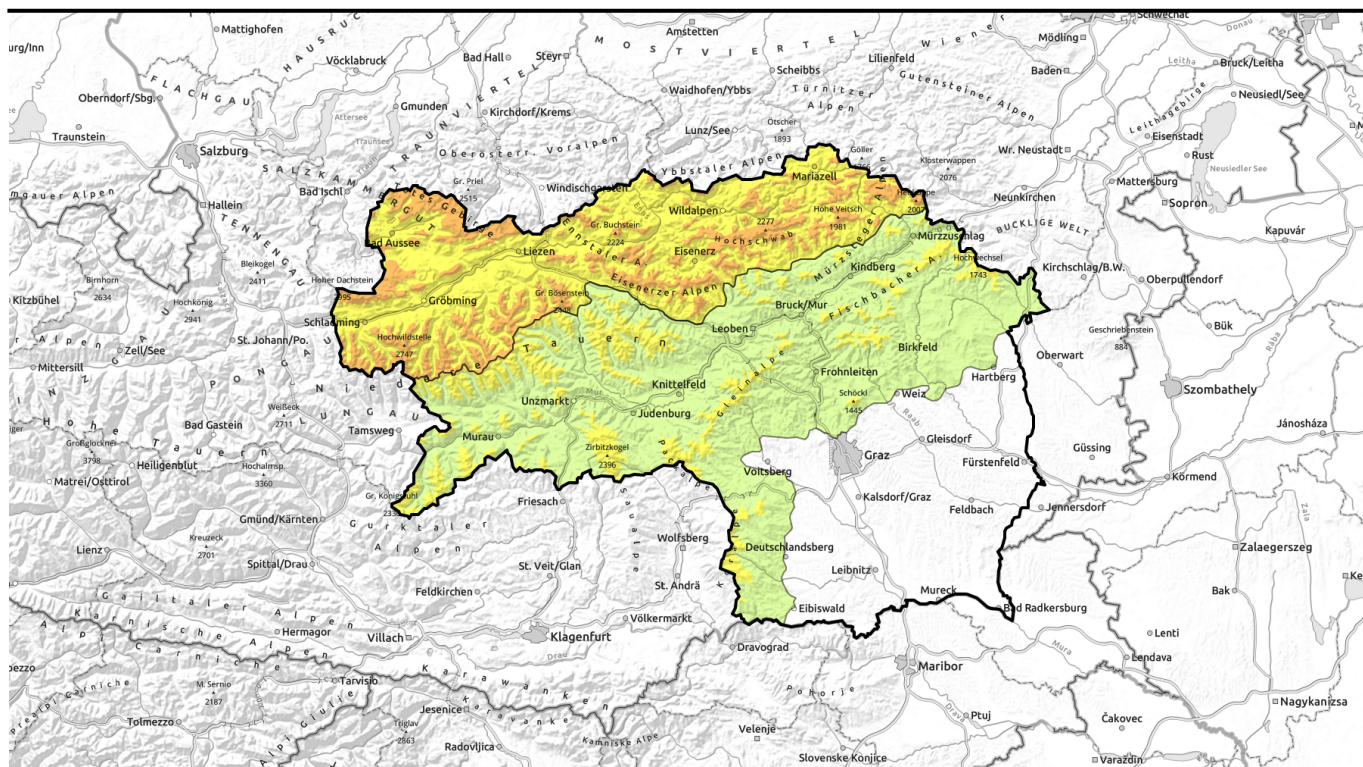


valid for: **Sunday, 10.12.2023**

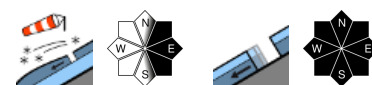


## Stormy winds, fresh drifts at high altitudes



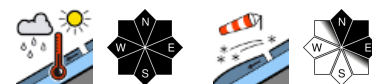
forestline

Totes Gebirge, Dachsteingebiet, Schladminger Tauern Nord, Rottenmanner Tauern, Nördliche Wölzer Tauern, Ennstaler Alpen, Hochschwabgebiet, Mürztoger Alpen, Eisenerzer Alpen



forestline

Schladminger Tauern Süd, Gurktaler Alpen, Südliche Wölzer Tauern, Seetaler Alpen, Gaaler Alpen, Mürztaler Alpen, Östliche Fischbacher Alpen und Wechselgebiet, Westliche Fischbacher Alpen und Grazer Bergland, Stub- und Gleinalpe, Korralpe, Triebener Tauern



### Avalanche problems



### Danger ratings

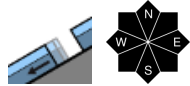
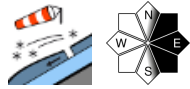


### Expositions



valid for: **Sunday, 10.12.2023**

**Totes Gebirge, Dachsteingebiet, Schladminger Tauern Nord, Rottenmanner Tauern, Nördliche Wölzer Tauern, Ennstaler Alpen, Hochschwabgebiet, Mürzsteiger Alpen, Eisenerzer Alpen**



## Fresh drifts at high altitudes; wet-snow and glide-snow avalanches at low/intermediate altitudes

Considerable avalanche danger !

Above the treeline the snow is being transported to NE/E/SE facing slopes, fresh drifts are accumulating where distant from ridgelines they can be triggered even by 1 person. At medium altitudes and where there is lot of snow, some wet-snow avalanches cannot be excluded. Also glide-snow avalanches are still a threat. Avoid glide cracks.

### Snowpack structure

Due to milder temperatures on Friday, then dropping on Saturday, the snowpack has gained stability. Solar radiation on Saturday afternoon also helped the snow to settle on sunny slopes. Due to stormy winds which will begin during the night, and last all day long on Sunday, new drifts will accumulate, often poorly bonded to the snow below them. At low altitudes the snow is forfeiting its firmness due to rain impact.

### Weather

With the stormy NW air current on Saturday night, a marked perturbation will reach the Eastern Alps. From the start on Sunday, gray skies, snowfall above 1200 m, stormy NW winds. As of midday, clouds will disperse from the west, a bit of sunshine is expected. At 2000 m: -5 degrees; at 1500 m: -2 degrees. Strong W/NW winds all day long, on the eastern rim of the Alps reaching storm strength. On Monday, heavy clouds and snowfall/rainfall. The snowfall level will ascend from 1000 slowly up to 1600 m. Clouds will disperse in the afternoon.

### Outlook

Loss of snowpack firmness due to rain. Main danger wet-snow and loose-snow avalanches.

#### Avalanche problems



#### Danger ratings

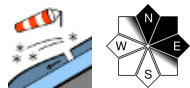
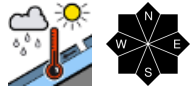


#### Expositions



valid for: **Sunday, 10.12.2023**

Schladminger Tauern Süd, Gurktaler Alpen, Südliche Wölzer Tauern, Seetaler Alpen, Gaaler Alpen, Mürztaler Alpen, Östliche Fischbacher Alpen und Wechselgebiet, Westliche Fischbacher Alpen und Grazer Bergland, Stub- und Gleinalpe, Koralpe, Triebener Tauern



## Stormy winds, fresh drifts accumulating

Above the treeline avalanche danger is moderate due to older snowdrift accumulations. Danger zones primarily on N/E facing slopes behind protruberances and at entries into gullies, bowls where slab avalanches can trigger even from 1 person. At intermediate and low altitudes the higher temperatures and rain impact has caused the snowpack to forfeit its firmness, likelihood of glide-snow and wet-snow avalanches is higher. Danger zones are steep grassy slopes and steep hillsides.

## Snowpack structure

Due to milder temperatures on Friday, then dropping on Saturday, the snowpack has gained stability. Solar radiation on Saturday afternoon also helped the snow to settle on sunny slopes. Due to stormy winds which will begin during the night, and last all day long on Sunday, new drifts will accumulate, often poorly bonded to the snow below them. At low altitudes the snow is forfeiting its firmness due to rain impact.

## Weather

With the stormy NW air current on Saturday night, a marked perturbation will reach the Eastern Alps. From the start on Sunday, gray skies, snowfall above 1200 m, stormy NW winds. As of midday, clouds will disperse from the west, a bit of sunshine is expected. At 2000 m: -5 degrees; at 1500 m: -2 degrees. Strong W/NW winds all day long, on the eastern rim of the Alps reaching storm strength. On Monday, heavy clouds and snowfall/rainfall. The snowfall level will ascend from 1000 slowly up to 1600 m. Clouds will disperse in the afternoon.

## Outlook

Loss of snowpack firmness due to rain. Main danger wet-snow and loose-snow avalanches.

Translated by Jeffrey McCabe, [www.creativtrans.com](http://www.creativtrans.com)

### Avalanche problems



### Danger ratings



### Expositions

