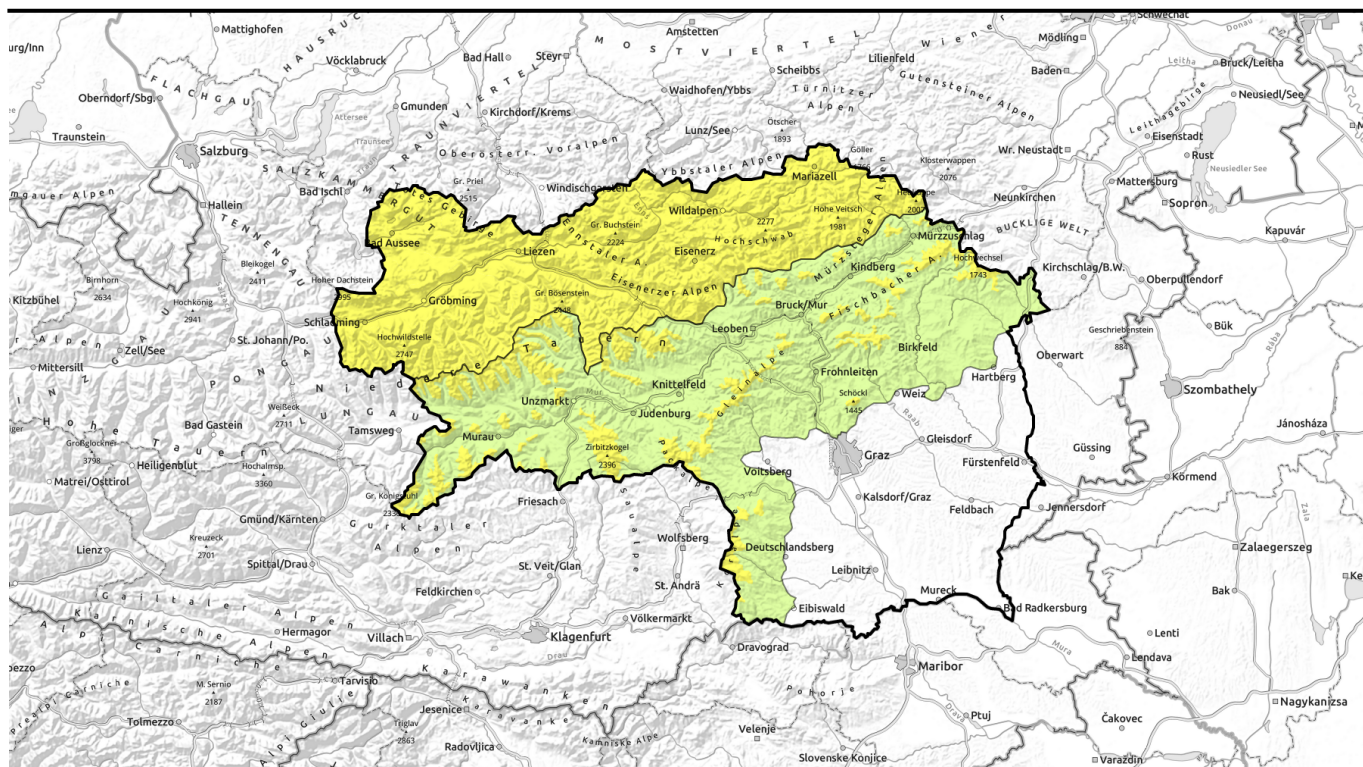


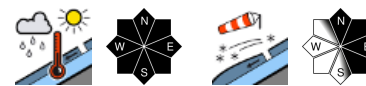
valid for: **Saturday, 09.12.2023**



Still trigger-sensitive drifts on shady high-altitude slopes. Wet-snow, glide-snow avalanches at low altitudes.

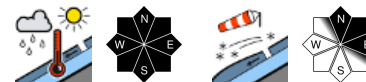


Totes Gebirge, Dachsteingebiet, Schladminger Tauern Nord, Rottenmanner Tauern, Nördliche Wölzer Tauern, Ennstaler Alpen, Hochschwabgebiet, Mürtzsteiger Alpen, Eisenerzer Alpen, Triebener Tauern



forestline

Schladminger Tauern Süd, Gurktaler Alpen, Südliche Wölzer Tauern, Seetaler Alpen, Gaaler Alpen, Mürtztaler Alpen, Östliche Fischbacher Alpen und Wechselgebiet, Westliche Fischbacher Alpen und Grazer Bergland, Stub- und Gleinalpe, Korralpe



Avalanche problems



Danger ratings



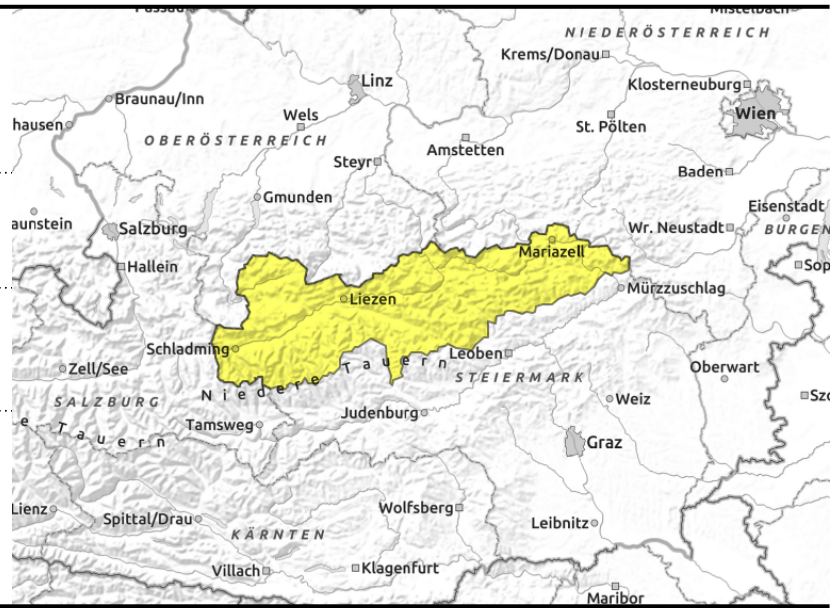
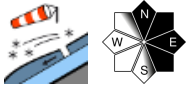
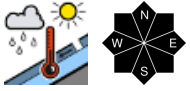
1 low 2 moderate 3 considerable 4 high 5 very high

Expositions



valid for: **Saturday, 09.12.2023**

Totes Gebirge, Dachsteingebiet, Schladminger Tauern Nord, Rottenmanner Tauern, Nördliche Wölzer Tauern, Ennstaler Alpen, Hochschwabgebiet, Mürzsteiger Alpen, Eisenerzer Alpen, Triebener Tauern



Still trigger-sensitive drifts on shady high-altitude slopes. Wet-snow, glide-snow avalanches at low altitudes.

Moderate avalanche danger: through higher temperatures and rain impact the snowpack has forfeited its firmness. Result: more moist loose-snow avalanches; likelihood of glide-snow avalanches is higher. Danger zones occur primarily on steep grassy slopes at high altitudes and on steep hillsides. Slab avalanches are likeliest on steep ridgeline slopes at entries into gullies, bowls, behind protruberances.

Snowpack structure

As a result of stormy NW winds on Thursday, new snowdrifts have accumulated. Clear, windless skies on Thursday night, thereby generating surface hoar which deteriorated on Friday. On sunny slopes and in general on low-altitude shady slopes the snow is moist. Older snowdrift zones occur primarily on N/E/SE facing slopes above the treeline. Soft layers can make the snow prone to triggering.

Weather

On Friday night a warm front will move in from the west. Tenacious fog will persist in the valleys until afternoon, high-altitude clouds will dominate higher up (light snowfall). Clouds will then disperse, in southern regions skies will be cloudless, then in the evening new cloud cover will move in. The S/SE winds (at high altitudes W/SW) will be mostly light. Temperatures at 2000 m at midday: -4 degrees; at 1500 m: -1 degree.

A stormy NW air current will bring a marked perturbation to the Eastern Alps on Sunday: gray skies from the start, snowfall above 1200 m, stormy NW winds. As of midday, clouds will disperse and some sunshine is expected. Temperatures will remain unchanged.

Outlook

Slight rise in avalanche danger on Sunday due to storm-strength winds.

Avalanche problems



Danger ratings

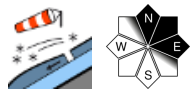
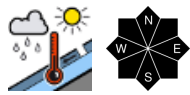


Expositions



valid for: **Saturday, 09.12.2023**

Schladminger Tauern Süd, Gurktaler Alpen, Südliche Wölzer Tauern, Seetaler Alpen, Gaaler Alpen, Mürtzaler Alpen, Östliche Fischbacher Alpen und Wechselgebiet, Westliche Fischbacher Alpen und Grazer Bergland, Stub- und Gleinalpe, Korralpe



Still trigger-sensitive drifts on shady high-altitude slopes. Wet-snow, glide-snow avalanches at low altitudes.

Above the treeline avalanche danger is moderate due to older snowdrift accumulations. Danger zones primarily on N/E facing slopes behind protruberances and at entries into gullies, bowls where slab avalanches can trigger even from 1 person. At intermediate and low altitudes the higher temperatures and rain impact has caused the snowpack to forfeit its firmness, likelihood of glide-snow and wet-snow avalanches is higher. Danger zones are steep grassy slopes and steep hillsides.

Snowpack structure

The stormy winds have created windblown slopes on the southern flank of the Tauern and in the rimline ranges. Clear, windless skies on Thursday night, thereby generating surface hoar which deteriorated on Friday. On sunny slopes and in general on low-altitude shady slopes the snow is moist. Older snowdrift zones occur primarily on N/E/SE facing slopes above the treeline. Soft layers can make the snow prone to triggering.

Weather

On Friday night a warm front will move in from the west. Tenacious fog will persist in the valleys until afternoon, high-altitude clouds will dominate higher up (light snowfall). Clouds will then disperse, in southern regions skies will be cloudless, then in the evening new cloud cover will move in. The S/SE winds (at high altitudes W/SW) will be mostly light. Temperatures at 2000 m at midday: -4 degrees; at 1500 m: -1 degree.

A stormy NW air current will bring a marked perturbation to the Eastern Alps on Sunday: gray skies from the start, snowfall above 1200 m, stormy NW winds. As of midday, clouds will disperse and some sunshine is expected. Temperatures will remain unchanged.

Outlook

Avalanche danger levels are not expected to change significantly.

Translated by Jeffrey McCabe, www.creativtrans.com

Avalanche problems



Danger ratings



Expositions

