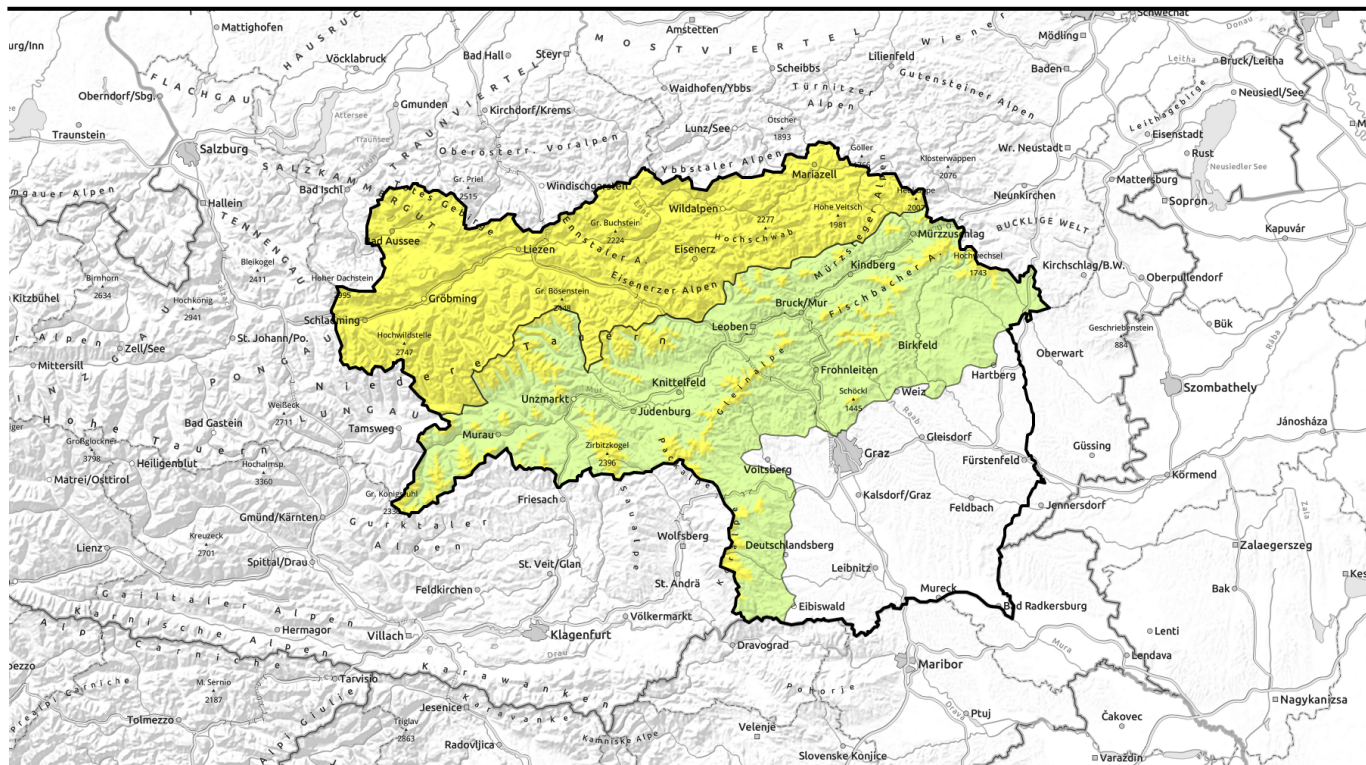






valid for: **Thursday, 07.12.2023**



Still moderate danger of slab and glide-snow avalanches

	<p>Totes Gebirge, Dachsteingebiet, Schladminger Tauern Nord, Nördliche Wölzer Tauern, Rottenmanner Tauern, Ennstaler Alpen, Hochschwabgebiet, Mürzsteger Alpen, Eisenerzer Alpen, Triebener Tauern, Schladminger Tauern Süd</p>	
	<p>forestline Südliche Wölzer Tauern, Gaaler Alpen, Seetaler Alpen, Mürtzaler Alpen, Östliche Fischbacher Alpen und Wechselgebiet, Westliche Fischbacher Alpen und Grazer Bergland, Korralpe, Stub- und Geinalpe, Gurktaler Alpen</p>	

Avalanche problems



Danger ratings

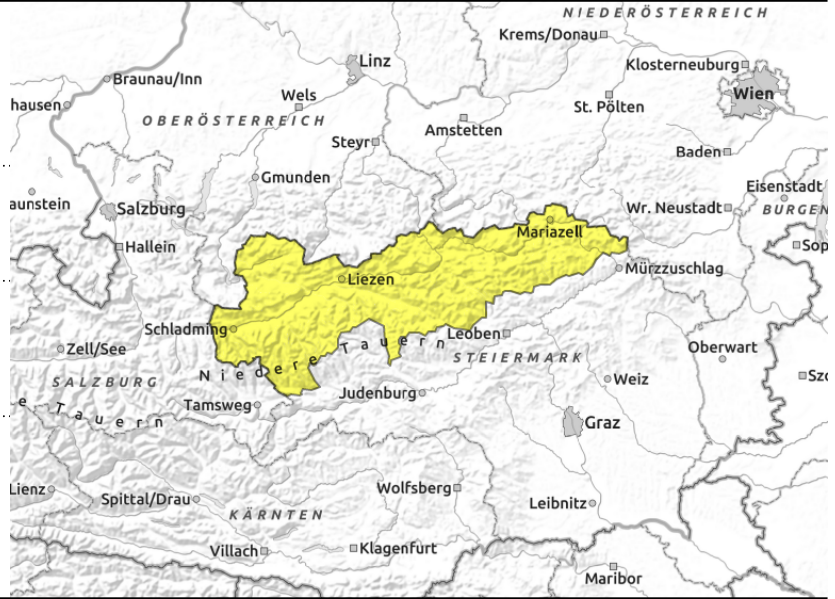


Expositions



valid for: **Thursday, 07.12.2023**

Totes Gebirge, Dachsteingebiet, Schladminger Tauern Nord, Nördliche Wölzer Tauern, Rottenmanner Tauern, Ennstaler Alpen, Hochschwabgebiet, Mürzsteiger Alpen, Eisenerzer Alpen, Triebener Tauern, Schladminger Tauern Süd



near ridgelines, behind protruberances, in gullies, steep bowls



possible at any time of day or night

Caution urged towards older, thinly blanketed snowdrifts

Main danger: older snowdrifts. Danger zones occur mainly on N/E/S facing wind-loaded slopes and, in particular, behind protruberances and at entry points into gullies and bowls, where slab avalanches can be triggered by large additional loading, in isolated cases also by minimum additional loading (1 person). On smooth grassy slopes naturally triggered glide-snow avalanches are possible, in isolated cases they can endanger exposed transportation routes. Zones below glide cracks should be avoided.

Snowpack structure

The fresh snow from Wednesday is bonding well with the snow from last weekend, but have been covered over by freshly generated snowdrifts (which have not yet settled, due to low temperatures, esp. on shady slopes). Weak layers are making the snow prone to triggering. The base at ground level is often moist, on steep grassy slopes the snowpack is still gliding.

Weather

Northern barrier clouds will disperse overnight, an intermediate high will prevail on Thursday. Along the Northern Alps and Tauern northern flank the residual clouds and fog will disperse during the morning, snow showers will persist for long from Eisenerzer Alps and eastwards. On the southern flank of the Alps there is little cloud cover, sunshine will prevail at latest at midday. Winds will initially be still strong from NW, but slacken off somewhat during the day. At midday at 2000 m: -11 degrees; at 1500 m: -8 degrees. In the south: -8 and -4 degrees.

In the evening, warm air masses will increase their inflow to the northern flank of the Alps, a shallow foehn situation will prevail temporarily. In the valleys it will remain cold. On Friday a warm front will bring warm air masses our way. Closed cloud cover will make temperatures at 2000 m extend above freezing.

Outlook

Initially no significant change, the cold is preserving the potential weak layers. As temperatures rise on Friday, the situation will improve.

Avalanche problems



Danger ratings

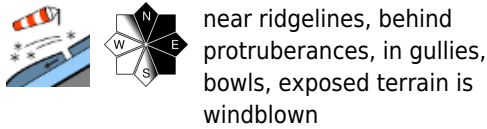
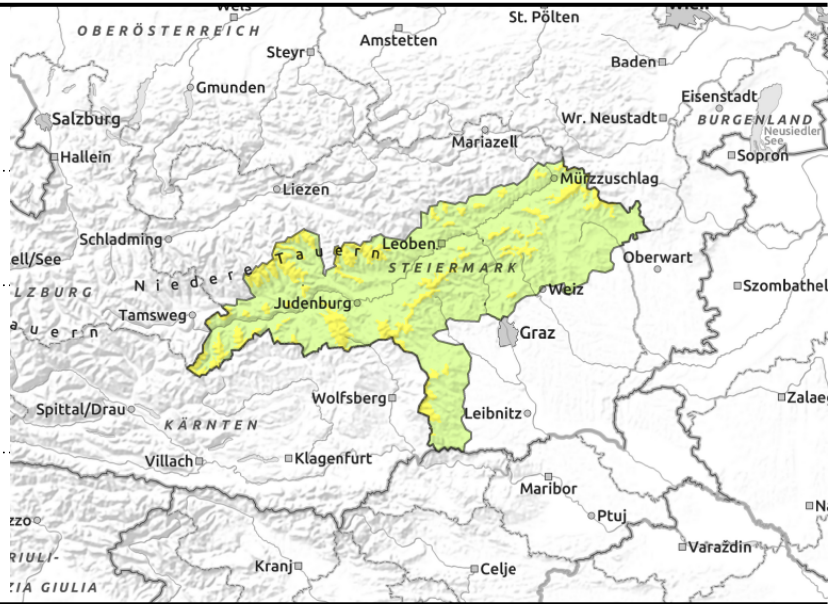


Expositions



valid for: **Thursday, 07.12.2023**

Südliche Wölzer Tauern, Gaaler Alpen, Seetaler Alpen, Mürtzaler Alpen, Östliche Fischbacher Alpen und Wechselgebiet, Westliche Fischbacher Alpen und Grazer Bergland, Koralpe, Stub- und Gleinalpe, Gurktaler Alpen



near ridgelines, behind protruberances, in gullies, bowls, exposed terrain is windblown



very isolated

Still moderate danger above treeline due to old snowdrift accumulations

Above the treeline moderate avalanche danger due to older snowdrift accumulations. Danger zones primarily on N/E facing slopes, especially behind protruberances and at entries into gullies and bowls slab avalanches can be triggered from the snowdrifts even by low additional loading in isolated cases.

Snowpack structure

Storm-strength winds on the southern Tauern flanks and in the rimline ranges have windblown much terrain completely bare of snow. The minor snowfall from Wednesday is bonding well with the old snow from last weekend, but older snowdrifts (which have not yet settled, due to low temperatures, esp. on shady slopes) are covered. Weak layers are making the snow prone to triggering. The base at ground level is often moist, on steep grassy slopes the snowpack is still gliding.

Weather

A low over central Italy and another low over Germany are sending moist/cold air masses to Styria. On Tuesday night some fresh snowfall is anticipated throughout Styria. In the course of the day on Wednesday the precipitation will temporarily stop, than starting at midday, particularly between Dachstein and Ennstal Alps, recommence. Only minor amounts are expected. Skies will remain gray, clouds will disperse only in the western rimline ranges during the afternoon. The NW winds will be blowing at moderate strength, at storm strength east of the Hochschwab. Temperatures at midday at 2000 m: -7 degrees; at 1500 m: -3 degrees.

Also on Thursday, the northern barrier cloud regions will have heavy cloud cover, a bit of minor snowfall is possible. Further to the south, sunshine is expected. On Friday, markedly higher temperatures.

Outlook

No significant change to start with. The cold is preserving the potential weak layers. Only as temperatures rise will the situation calm.

Translated by Jeffrey McCabe, www.creativtrans.com

Avalanche problems



Danger ratings



Expositions

