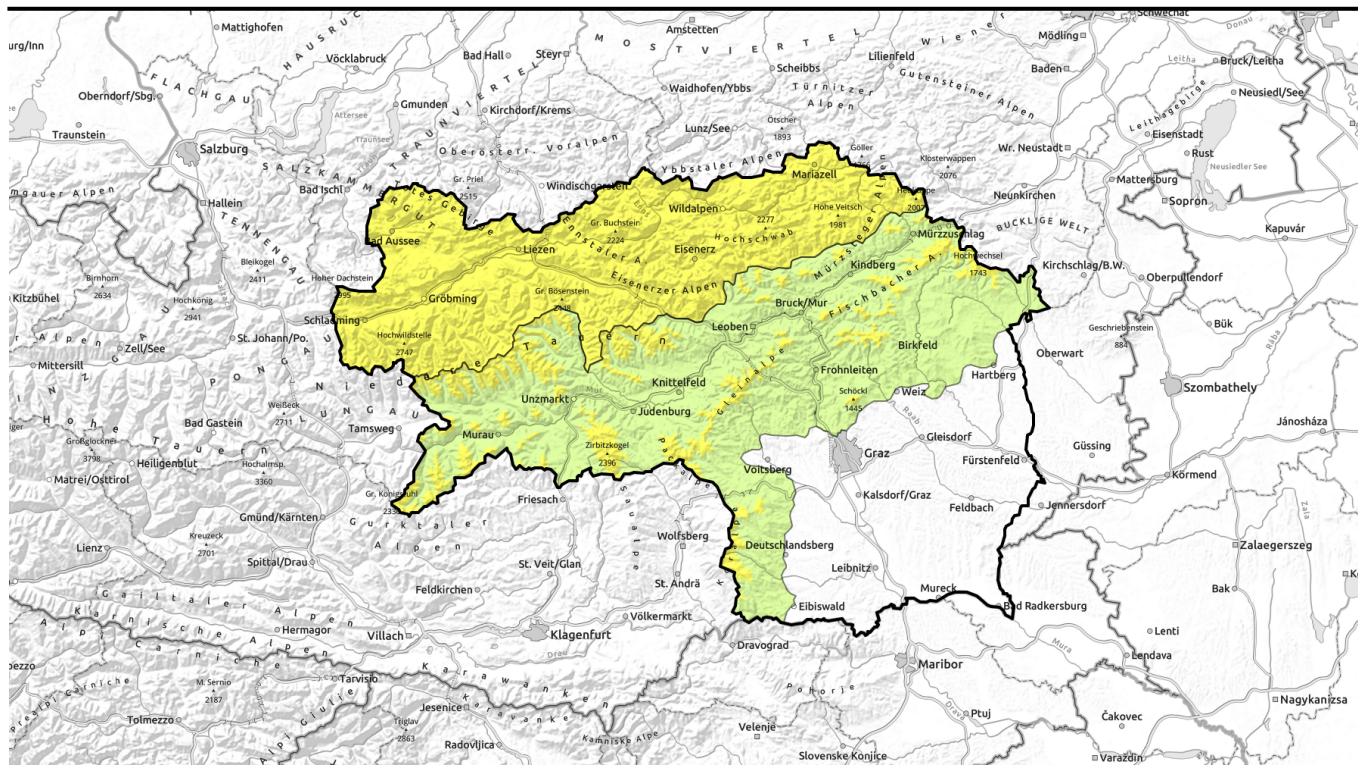


valid for: **Wednesday, 06.12.2023**



Moderate danger of slab and glide-snow avalanches



Totes Gebirge, Dachsteingebiet, Schladminger Tauern Nord, Nördliche Wölzer Tauern, Rottenmanner Tauern, Ennstaler Alpen, Hochschwabgebiet, Mürztger Alpen, Eisenerzer Alpen, Triebener Tauern



forestline

Schladminger Tauern Süd, Gurktaler Alpen, Südliche Wölzer Tauern, Gaaler Alpen, Seetaler Alpen, Mürztaler Alpen, Östliche Fischbacher Alpen und Wechselgebiet, Westliche Fischbacher Alpen und Grazer Bergland, Koralmpe, Stub- und Gleinalpe



Avalanche problems



Danger ratings

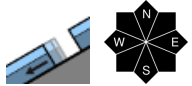
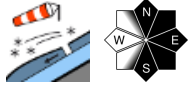


Expositions



valid for: **Wednesday, 06.12.2023**

Totes Gebirge, Dachsteingebiet, Schladminger Tauern Nord, Nördliche Wölzer Tauern, Rottenmanner Tauern, Ennstaler Alpen, Hochschwabgebiet, Mürzsteger Alpen, Eisenerzer Alpen, Triebener Tauern



possible at any time of day or night

Caution urged towards older and fresher snowdrifts

Main danger: older and fresher snowdrifts. Danger zones occur mainly on N/E/S facing wind-loaded slopes and, in particular, behind protruberances and at entry points into gullies and bowls, where slab avalanches can be triggered by large additional loading, in isolated cases also by minimum additional loading (1 person). On smooth grassy slopes naturally triggered glide-snow avalanches are possible, in isolated cases they can endanger exposed transportation routes. Zones below glide cracks should be avoided.

Snowpack structure

The snowpack base is melt-freeze encrusted and compact due to warm phases and rain impact. Atop of it, up to 50 cm of fresh snow was deposited, first without much wind, later with strong-to-stormy southerly winds, transporting the snow and depositing new drifts on N/E/S facing slopes. On sunny slopes the snowpack has been able to settle increasingly and become melt-freeze encrusted, shady slopes have preserved their weak layers both inside the snowpack at in transitions to the old fundament. Over steep grassy slopes the snowpack is still gliding.

Weather

A low over central Italy and another low over Germany are sending moist/cold air masses to Styria. On Tuesday night some fresh snowfall is anticipated throughout Styria. In the course of the day on Wednesday the precipitation will temporarily stop, than starting at midday, particularly between Dachstein and Ennstal Alps, recommence. Only minor amounts are expected. Skies will remain gray, clouds will disperse only in the western rimline ranges during the afternoon. The NW winds will be blowing at moderate strength, at storm strength east of the Hochschwab. Temperatures at midday at 2000 m: -7 degrees; at 1500 m: -3 degrees.

Also on Thursday, the northern barrier cloud regions will have heavy cloud cover, a bit of minor snowfall is possible. Further to the south, sunshine is expected. On Friday, markedly higher temperatures.

Avalanche problems



Danger ratings



Expositions



valid for: **Wednesday, 06.12.2023**

Outlook

No significant change to start with. The cold is preserving the potential weak layers. Only as temperatures rise will the situation calm.

Avalanche problems



Danger ratings

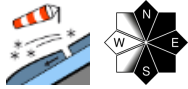


Expositions



valid for: **Wednesday, 06.12.2023**

Schladminger Tauern Süd, Gurktaler Alpen, Südliche Wölzer Tauern, Gaaler Alpen, Seetaler Alpen, Mürztaler Alpen, Östliche Fischbacher Alpen und Wechselgebiet, Westliche Fischbacher Alpen und Grazer Bergland, Koralmpe, Stub- und Gleinalpe



Moderate avalanche danger above treeline, due to snowdrifts

Above the timberline, moderate avalanche danger prevails, as a result of snowdrift accumulations. Danger zones occur initially in N/E/S aspects, particularly behind protruberances and at entries into gullies and bowls, where in isolated cases a slab avalanche can be triggered even by one person.

Snowpack structure

The snowpack base is thin, melt-freeze encrusted and compact due to warm phases and rain impact. Atop of it on Saturday, up to 30 cm of fresh snow was deposited with variable-strength NW and S winds, transporting the snow and depositing new drifts on N/E/S facing slopes. Weak layers inside the fresh snow have been preserved by the cold. Furthermore, in transitions from the warm snowpack base to the cold fresh snow/drifts, a weak layer can form.

Weather

A low over central Italy and another low over Germany are sending moist/cold air masses to Styria. On Tuesday night some fresh snowfall is anticipated throughout Styria. In the course of the day on Wednesday the precipitation will temporarily stop, than starting at midday, particularly between Dachstein and Ennstal Alps, recommence. Only minor amounts are expected. Skies will remain gray, clouds will disperse only in the western rimline ranges during the afternoon. The NW winds will be blowing at moderate strength, at storm strength east of the Hochschwab. Temperatures at midday at 2000 m: -7 degrees; at 1500 m: -3 degrees.

Also on Thursday, the northern barrier cloud regions will have heavy cloud cover, a bit of minor snowfall is possible. Further to the south, sunshine is expected. On Friday, markedly higher temperatures.

Outlook

No significant change to start with. The cold is preserving the potential weak layers. Only as temperatures rise will the situation calm.

Translated by Jeffrey McCabe, www.creativtrans.com

Avalanche problems



Danger ratings



Expositions

