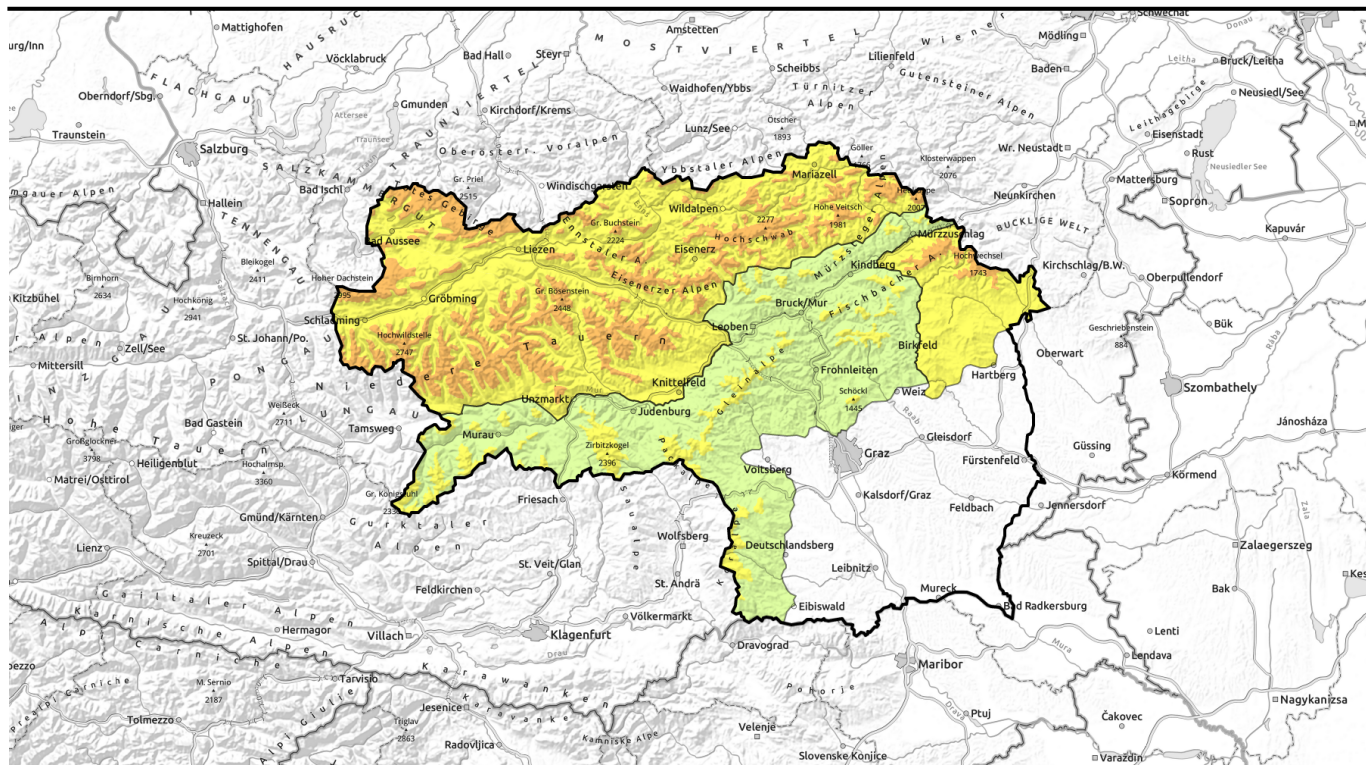


valid for: **Tuesday, 05.12.2023**

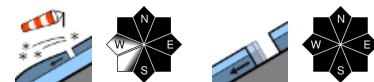


## Considerable avalanche danger in some places due to snowdrifts at high altitudes



forestline

Dachsteingebiet, Totes Gebirge, Schladminger Tauern Nord, Ennstaler Alpen, Rottenmanner Tauern, Eisenerzer Alpen, Triebener Tauern, Nördliche Wölzer Tauern, Hochschwabgebiet, Mürztalsteiger Alpen, Schladminger Tauern Süd, Südliche Wölzer Tauern, Gaaler Alpen, Östliche Fischbacher Alpen und Wechselgebiet



forestline

Westliche Fischbacher Alpen und Grazer Bergland, Mürztaler Alpen, Stub- und Gleinalpe, Koralpe, Seetaler Alpen, Gurktaler Alpen



### Avalanche problems



### Danger ratings



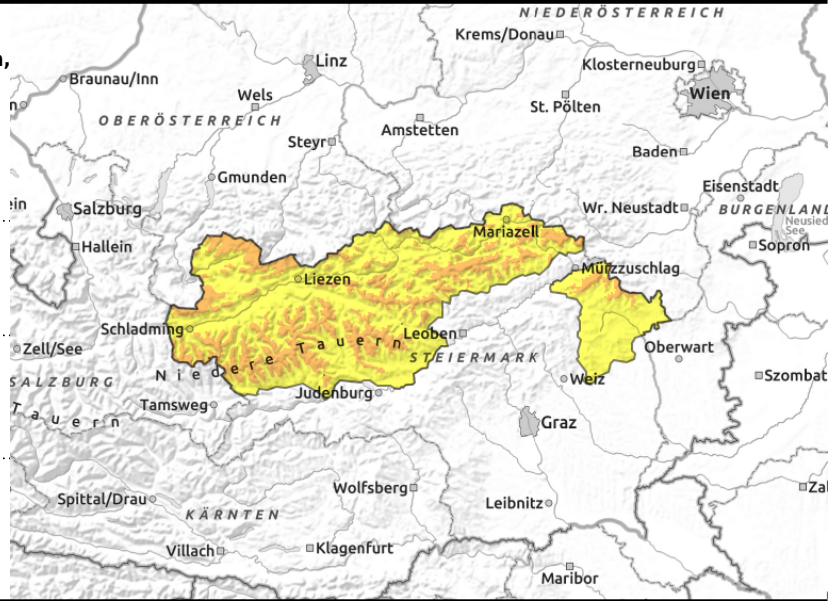
low moderate considerable high very high

### Expositions



valid for: **Tuesday, 05.12.2023**

**Dachsteingebiet, Totes Gebirge, Schladminger Tauern Nord, Ennstaler Alpen, Rottenmanner Tauern, Eisenerzer Alpen, Triebener Tauern, Nördliche Wölzer Tauern, Hochschwabgebiet, Mürzsteger Alpen, Schladminger Tauern Süd, Südliche Wölzer Tauern, Gaaler Alpen, Östliche Fischbacher Alpen und Wechselgebiet**



forestline



above timberline



possible at any time of day or night

**Considerable avalanche danger due to fresh snowdrifts above treeline. Also: beware glide-snow activity.**

Above the timberline considerable avalanche danger due to snowdrift accumulations threatens. Danger zones are mainly on N/E/S facing slopes, especially behind protruberances and at entry points into gullies and bowls, where slab avalanches can be triggered even by one person. On smooth grassy slopes, naturally triggered glide-snow avalanches are possible which, in isolated cases, can place exposed transportation routes at risk. Zones below glide cracks should be avoided.

**Snowpack structure**

The snowpack base is melt-freeze encrusted and compact due to warm phases and rain impact. Atop of it on Saturday, up to 50 cm of fresh snow was deposited, first without much wind, later with strong-to-stormy NW winds, transporting the snow and depositing new drifts on E/S facing slopes. Weak layers inside the fresh snow have been preserved by the cold. Furthermore, in transitions from the warm snowpack base to the cold fresh snow/drifts, a weak layer can form with time. Over steep grassy slopes the snowpack is still gliding.

**Weather**

On Tuesday morning north of the Main Alpine Ridge skies will largely be overcast, and during the course of the day the cloud cover will become heavier and descend so that even the summit zones suffer reduced visibility. Particularly the western mountain ranges will get minor snow showers. Temperatures at 2000 m will lie at -4 degrees. Winds will remain light all day long.

**Outlook**

Wednesday will bring clouds and moderate NW winds, strong in eastern regions. In the northern barrier cloud regions a bit of snowfall is anticipated, possibly heavier in the eastern mountain ranges. The snowdrift problem from the weekend will diminish, only in the furthest eastern regions will a new snowdrift problem be generated.

**Avalanche problems**



**Danger ratings**



**Expositions**



valid for: **Tuesday, 05.12.2023**

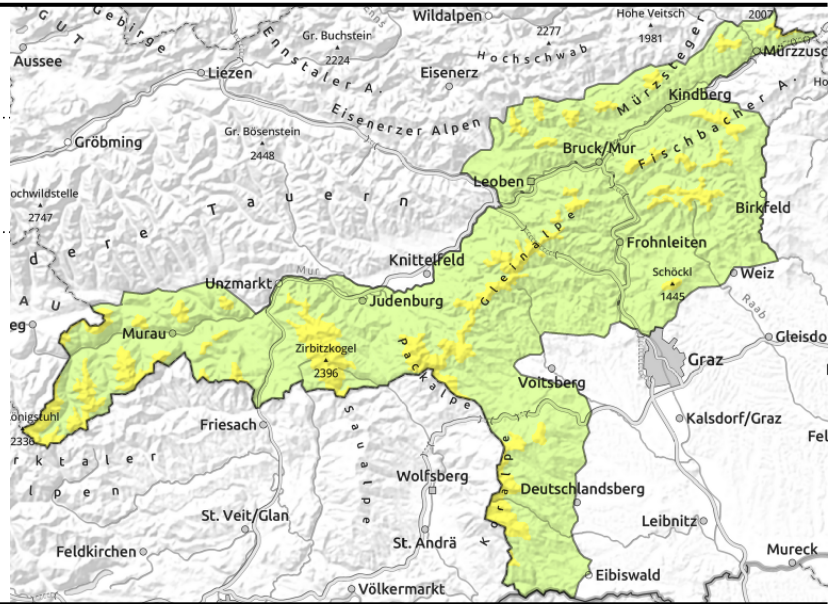
**Westliche Fischbacher Alpen und Grazer Bergland, Mürztaler Alpen, Stub- und Gleinalpe, Korralpe, Seetaler Alpen, Gurktaler Alpen**



forestline



above timberline



## Moderate avalanche danger above treeline, due to snowdrifts

Above the timberline, moderate avalanche danger prevails, as a result of snowdrift accumulations. Danger zones occur initially in N/E/S aspects, particularly behind protruberances and at entries into gullies and bowls, where in isolated cases a slab avalanche can be triggered even by one person.

### Snowpack structure

The snowpack base is thin, melt-freeze encrusted and compact due to warm phases and rain impact. Atop of it on Saturday, up to 30 cm of fresh snow was deposited with variable-strength NW and S winds, transporting the snow and depositing new drifts on N/E/S facing slopes. Weak layers inside the fresh snow have been preserved by the cold. Furthermore, in transitions from the warm snowpack base to the cold fresh snow/drifts, a weak layer can form.

### Weather

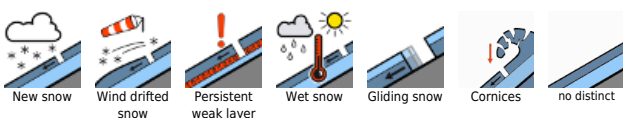
On Tuesday, some sunshine, but clouds will move in during the afternoon and towards evening light snowfall will set in from the south. Temperatures at 2000 m will be -2 degrees. Winds will be light all day long.

### Outlook

Wednesday will bring clouds and moderate NW winds, strong in eastern regions. In the northern barrier cloud regions a bit of snowfall is anticipated, possibly heavier in the eastern mountain ranges. The snowdrift problem from the weekend will diminish, only in the furthestmost eastern regions will a new snowdrift problem be generated.

Translated by Jeffrey McCabe, [www.creativtrans.com](http://www.creativtrans.com)

#### Avalanche problems



#### Danger ratings



#### Expositions

