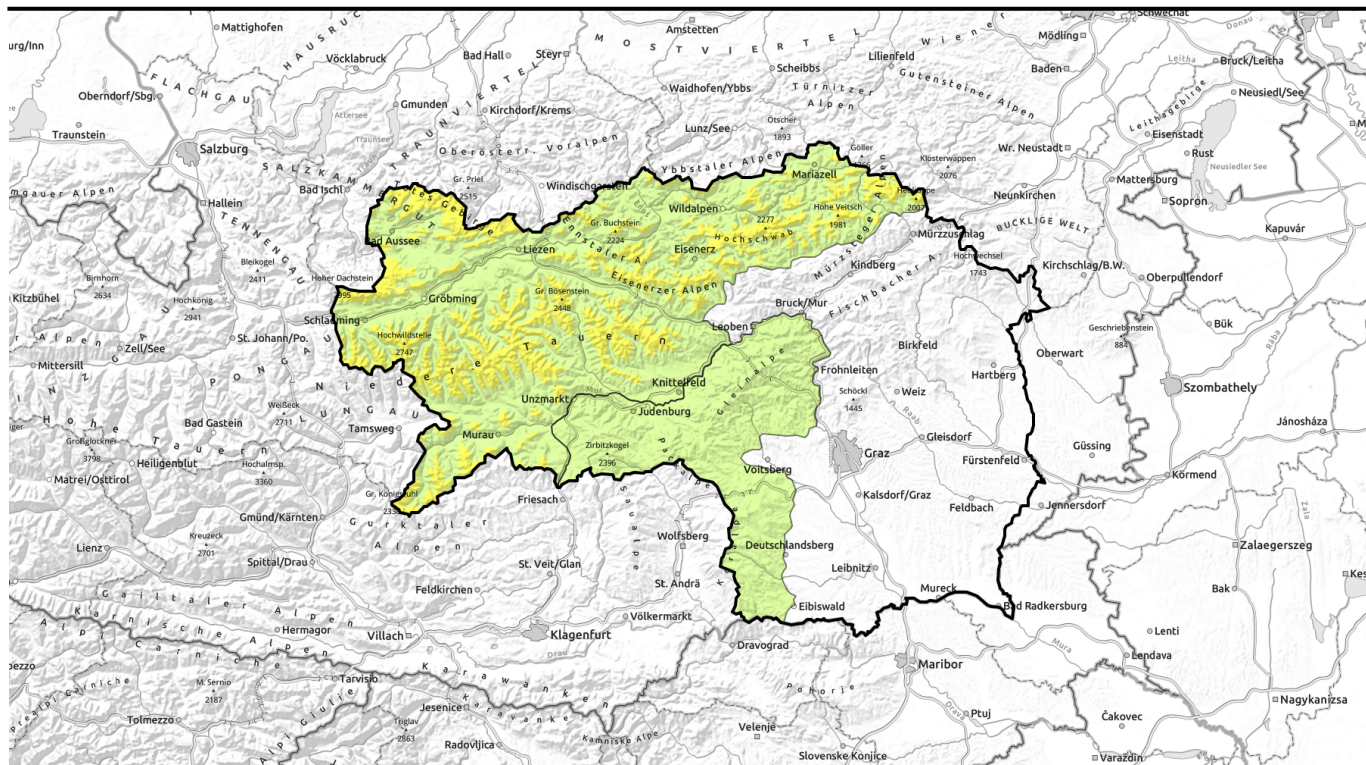


Avalanche report for **Wednesday, 26.04.2023**



Instable weather conditions continue, fresh snowdrifts and regional wet-snow problem



2000 m

Totes Gebirge, Ennstaler Alpen, Hochschwabgebiet, Mürzsteger Alpen, Schladming Tauern Nord, Nördliche Wölzer Tauern, Rottenmanner Tauern, Eisenerzer Alpen, Schladming Tauern Süd, Südliche Wölzer Tauern, Gurktaler Alpen, Seckauer Tauern, Dachsteingebiet



Seetaler Alpen, Stub- und Gleinalpe, Koralpe



Avalanche problems



Danger ratings



Expositions



Avalanche report for **Wednesday, 26.04.2023**

Totes Gebirge, Ennstaler Alpen, Hochschwabgebiet, Mürzsteiger Alpen, Schladminger Tauern Nord, Nördliche Wölzer Tauern, Rottenmanner Tauern, Eisenerzer Alpen, Schladminger Tauern Süd, Südliche Wölzer Tauern, Gurktaler Alpen, Seckauer Tauern, Dachsteingebiet



fresh snowdrifts at high altitudes on ridgeline slopes, behind abrupt drops in the terrain



Heed: fresh snowdrift masses at high altitudes

Avalanche danger above 2000 m is moderate, below that altitude danger is moderate. Some fresh snow and intensifying NW winds continue to generate fresh small snowdrift accumulations. Wet loose-snow avalanches on extremely steep slopes which have not yet discharged are isolated, possible in case of longer solar radiation and large amounts of rain.

Snowpack structure

At high altitudes in the Northern Alps (Dachstein region, Totes Gebirge, Hochschwab region) and in the Niedere Tauern there has been repeated snowfall since Monday, more will come on Tuesday night amid moderate-to-strong NW winds, generating fresh snowdrifts which will be prone to triggering, esp. on shady slopes. At intermediate altitudes the snowpack will regain firmness only briefly, rain and extended phases of solar radiation will destabilize it further. On extremely steep grassy slopes the thoroughly wet snowpack can simply glide away.

Weather

After the high-pressure trough recedes, the weather in the Northern Alps remains gloomy and instable. On Tuesday night and Wednesday morning, repeated bouts of snowfall amid NW air-current which will make the snowfall level descend for a brief spell down to 800 m. On the southern flank of the Alps, conditions are more pleasant, milder and sunnier. Particularly in the rimline ranges, the tendency to snowfall will rise in the afternoon. At 2000 m: -4 to 0 degrees, rising somewhat in the afternoon. The NW wind is moderate, stronger at high altitudes.

Outlook

The NW air-current will abide, bringing moist Atlantic air masses, i.e. instable April weather with sunny intervals, clouds, regional bouts of precipitation, milder temperatures as the day progresses. Avalanche danger is not expected to change significantly.

Avalanche problems



Danger ratings



Expositions

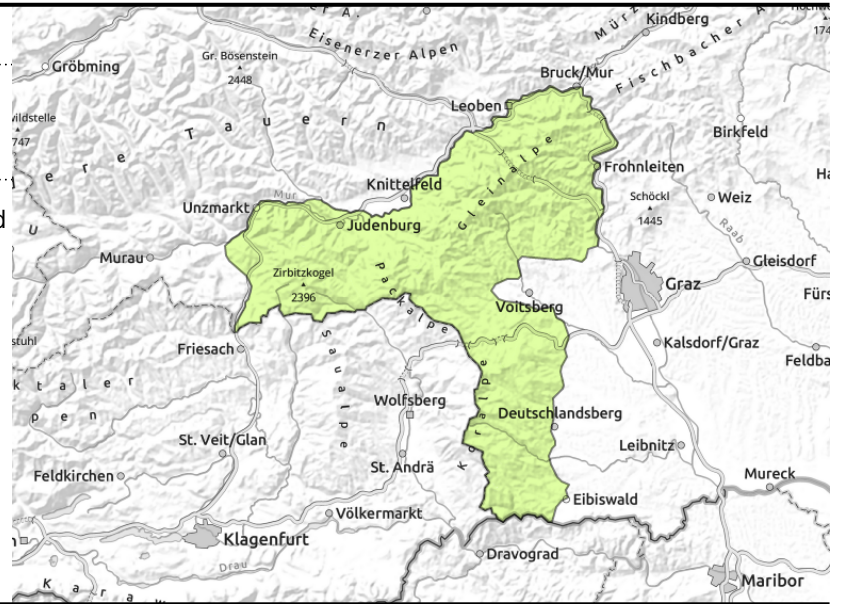


Avalanche report for **Wednesday, 26.04.2023**

Seetaler Alpen, Stub- und Gleinalpe, Koralpe



loss of firmness due to rain and radiation



Wet-snow and isolated snowdrift problems: low danger

Avalanche danger is low. Isolated small fresh trigger-sensitive snowdrift accumulations on high altitude ridgeline slopes. Wet loose-snow avalanches possible on extremely steep slopes which have not yet discharged, possible in case of longer solar radiation and large amounts of rain.

Snowpack structure

Radiation and rainfall will further destabilize the snowpack. Some fresh snow and winds will generate small snowdrifts at high altitudes, inadequately bonding with the snowpack and prone to triggering. Despite lower temperatures, intermediate slopes are increasingly bare of snow, what remains is moist-to-wet.

Weather

After the high-pressure trough recedes, the weather in the Northern Alps remains gloomy and unstable. On Tuesday night and Wednesday morning, repeated bouts of snowfall amid NW air-current which will make the snowfall level descend for a brief spell down to 800 m. On the southern flank of the Alps, conditions are more pleasant, milder and sunnier. Particularly in the rimline ranges, the tendency to snowfall will rise in the afternoon. At 2000 m: -4 to 0 degrees, rising somewhat in the afternoon. The NW wind is moderate, stronger at high altitudes.

Outlook

The NW air-current will abide, bringing moist Atlantic air masses, i.e. instable April weather with sunny intervals, clouds, regional bouts of precipitation, milder temperatures as the day progresses. Avalanche danger is not expected to change significantly.

Translated by Jeffrey McCabe, www.creativtrans.com

Avalanche problems



Danger ratings



Expositions

