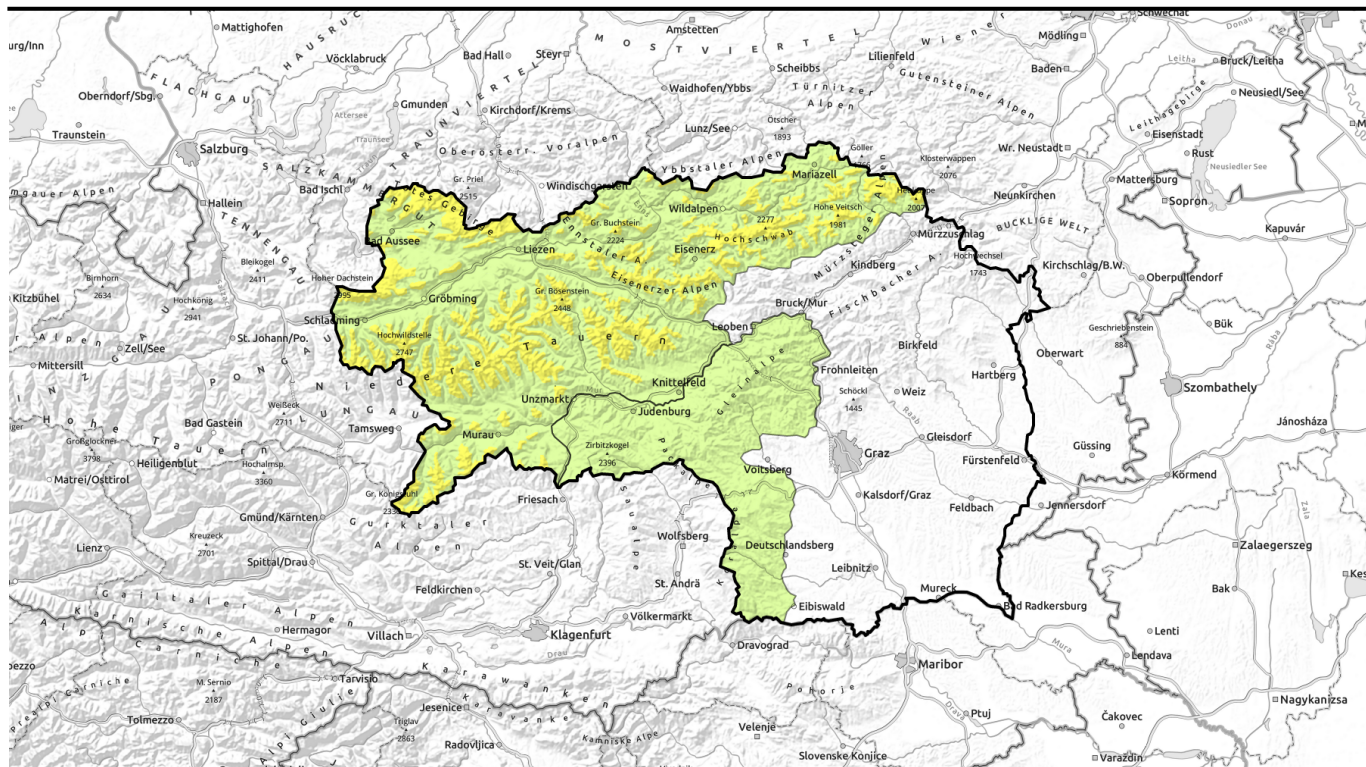


# Avalanche report for Tuesday, 25.04.2023



## Instable weather conditions, fresh snowdrifts at high altitudes



2000 m

Dachsteingebiet, Totes Gebirge, Ennstaler Alpen, Hochschwabgebiet, Mürzsteger Alpen, Schladminger Tauern Nord, Nördliche Wölzer Tauern, Rottenmanner Tauern, Eisenerzer Alpen, Schladminger Tauern Süd, Südliche Wölzer Tauern, Gurktaler Alpen, Seckauer Tauern



Seetaler Alpen, Stub- und Gleinalpe, Koralpe



### Avalanche problems



### Danger ratings



### Expositions



# Avalanche report for Tuesday, 25.04.2023

**Dachsteingebiet, Totes Gebirge, Ennstaler Alpen, Hochschwabgebiet, Mürzsteger Alpen, Schladminger Tauern Nord, Nördliche Wölzer Tauern, Rottenmanner Tauern, Eisenerzer Alpen, Schladminger Tauern Süd, Südliche Wölzer Tauern, Gurktaler Alpen, Seckauer Tauern**



fresh snowdrifts at high altitudes on ridgeline slopes, behind abrupt drops in the terrain



## Fresh snowdrift masses at high altitudes

Avalanche danger above 2000 m is moderate, below that altitude danger is moderate. Some fresh snow and intensifying NW winds continue to generate fresh small snowdrift accumulations. Danger zones occur esp. near ridgelines and behind abrupt drops in the terrain on shady slopes as well as in extended eastern aspects, they are prone to triggering. Wet loose-snow avalanches on extremely steep slopes which have not yet discharged are isolated, possible in case of longer solar radiation and large amounts of rain.

## Snowpack structure

After the snowpack was moistened by the mild temperatures and rainfall, it regained some firmness at high altitudes. The fresh snow and wind generated new snowdrift accumulations which are poorly bonded with the old snowpack surface and are prone to triggering. Intermediate altitude slopes are becoming bare of snow, what remains is moist-to-wet- Rain and extended solar radiation are destabilizing the snowpack.

## Weather

A high-pressure trough is spreading over northern Europe as far as the Eastern Alps, bringing instable weather conditions on Tuesday. In the morning, some sunshine, convective cloud build-up. As of midday a tendency towards showers in the Tauern regions. Later, rain and snow showers can be expected, isolated thunderstorms in the rimline ranges. Snowfall level in the Northern Alps at 1200 m, in the southern regions at 1600 m. Winds will be brisk to strong from NW. At 2000 m: -3 degrees in the north, 0 degrees in the south.

## Outlook

Instable conditions on Wednesday. In the Northern Alps dense clouds, repeated bouts of rain and snow (down to 800 m). In southern regions scattered clouds, bright intervals, thunderstorms in the rimline ranges.

Little change in the avalanche situation.

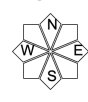
### Avalanche problems



### Danger ratings

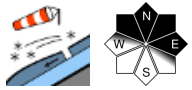


### Expositions

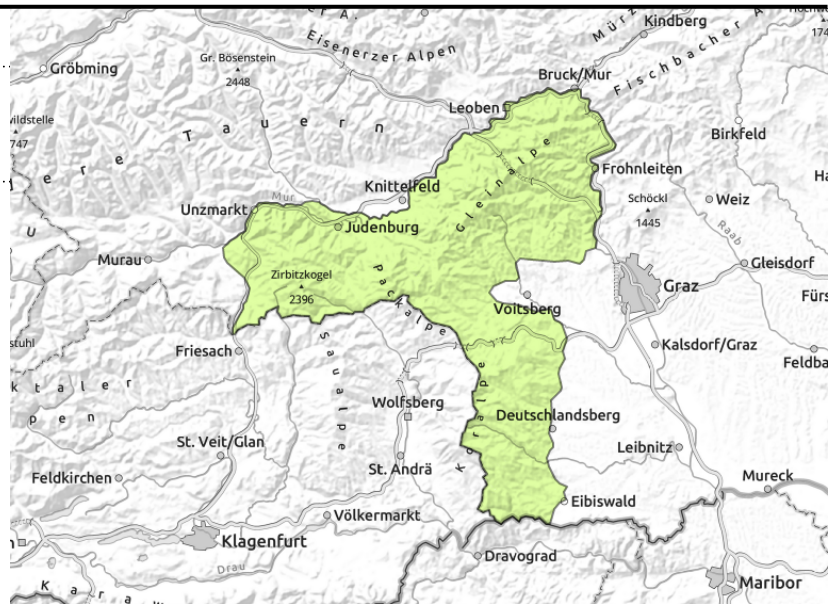


# Avalanche report for Tuesday, 25.04.2023

## Seetaler Alpen, Stub- und Gleinalpe, Koralpe



thin snowdrift patches at high altitudes, ridgeline slopes, behind abrupt drops in the terrain



## Isolated freshly generated snowdrift patches at high altitudes

Avalanche danger is low. Isolated small fresh trigger-sensitive snowdrift accumulations on high altitude ridgeline slopes. Wet loose-snow avalanches possible on extremely steep slopes which have not yet discharged, possible in case of longer solar radiation and large amounts of rain.

### Snowpack structure

After the snowpack was moistened by the mild temperatures and rainfall, it regained some firmness at high altitudes. The fresh snow and wind generated new snowdrift accumulations which are poorly bonded with the old snowpack surface and are prone to triggering. Intermediate altitude slopes are becoming bare of snow, what remains is moist-to-wet- Rain and extended solar radiation are destabilizing the snowpack.

### Weather

A high-pressure trough is spreading over northern Europe as far as the Eastern Alps, bringing instable weather conditions on Tuesday. In the morning, some sunshine, convective cloud build-up. As of midday a tendency towards showers in the Tauern regions. Later, rain and snow showers can be expected, isolated thunderstorms in the rimline ranges. Snowfall level in the Northern Alps at 1200 m, in the southern regions at 1600 m. Winds will be brisk to strong from NW. At 2000 m: -3 degrees in the north, 0 degrees in the south.

### Outlook

Instable conditions on Wednesday. In the Northern Alps dense clouds, repeated bouts of rain and snow (down to 800 m). In southern regions scattered clouds, bright intervals, thunderstorms in the rimline ranges.

Little change in the avalanche situation.

Translated by Jeffrey McCabe, [www.creativtrans.com](http://www.creativtrans.com)

### Avalanche problems



### Danger ratings



### Expositions

