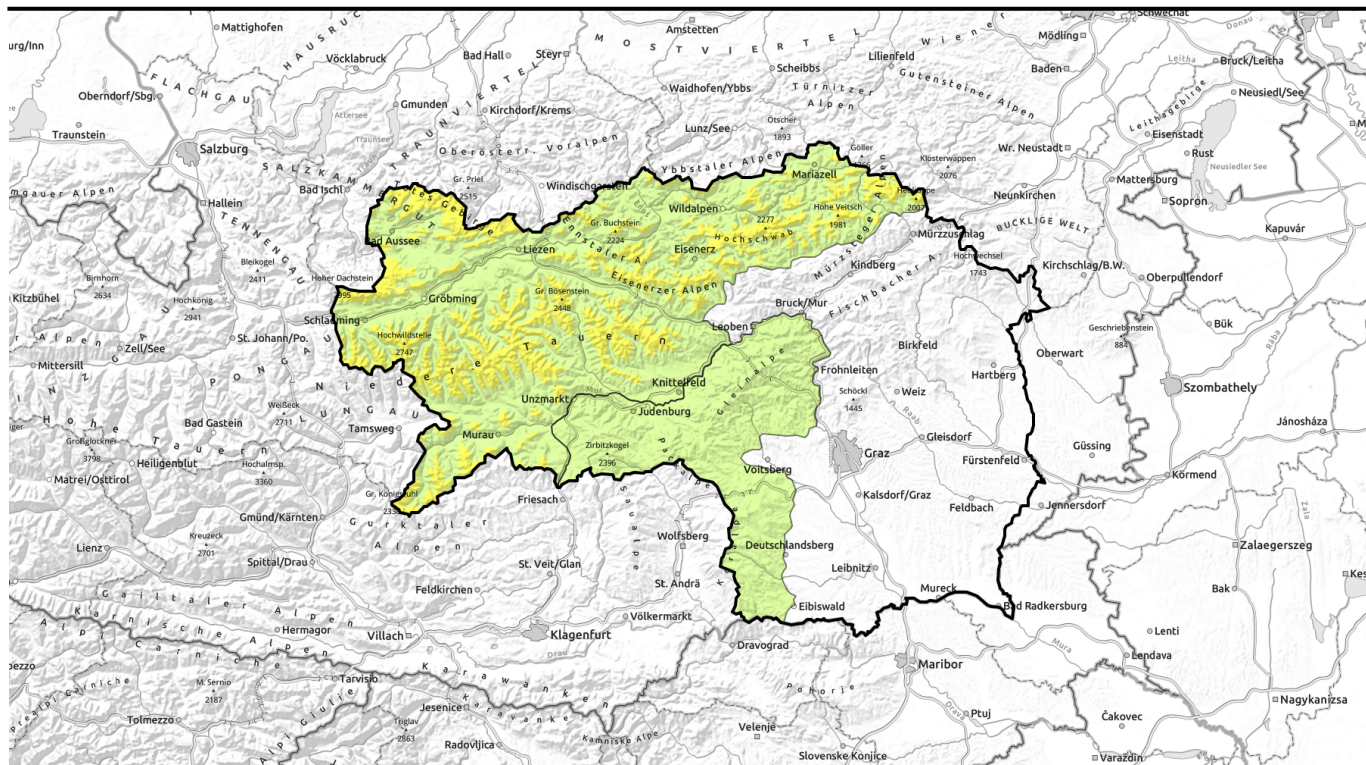


Avalanche report for Monday, 24.04.2023



Diminishing wet-snow problem. Increasing snowdrift problem at high altitude.

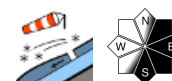


2000 m

Dachsteingebiet, Totes Gebirge, Ennstaler Alpen, Hochschwabgebiet, Mürzsteger Alpen, Schladminger Tauern Nord, Nördliche Wölzer Tauern, Rottenmanner Tauern, Eisenerzer Alpen, Schladminger Tauern Süd, Südliche Wölzer Tauern, Gurktaler Alpen, Seckauer Tauern



Seetaler Alpen, Stub- und Gleinalpe, Koralpe



Avalanche problems



Danger ratings

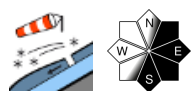
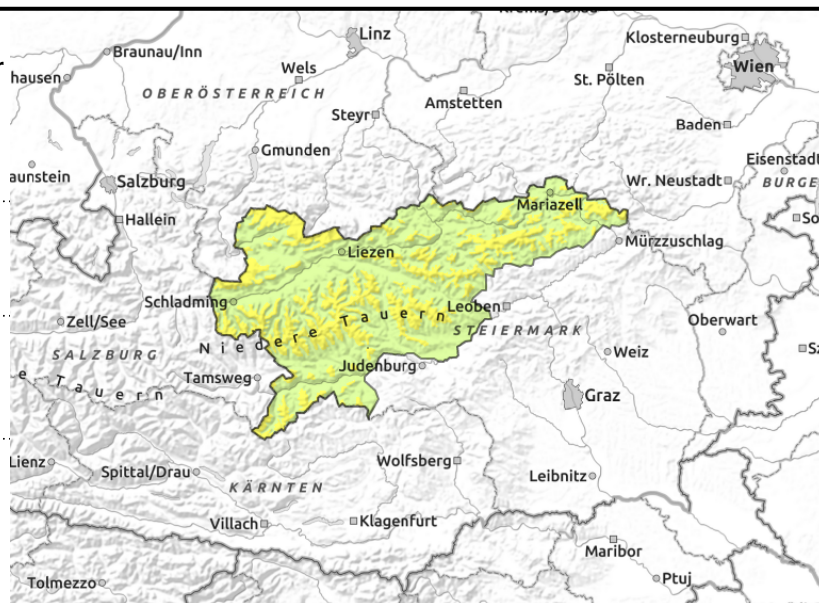


Expositions



Avalanche report for Monday, 24.04.2023

Dachsteingebiet, Totes Gebirge, Ennstaler Alpen, Hochschwabgebiet, Mürzsteger Alpen, Schladminger Tauern Nord, Nördliche Wölzer Tauern, Rottenmanner Tauern, Eisenerzer Alpen, Schladminger Tauern Süd, Südliche Wölzer Tauern, Gurktaler Alpen, Seckauer Tauern



Fresh snowdrift patches at high altitudes

With dropping temperatures and lack of radiation, the danger of wet-snow avalanches is again diminishing. However, as a result of fresh snow and winds shifting to northerly, fresh snowdrift accumulations are being generated at high altitudes, deposited particularly on E/S facing slopes behind abrupt drops in the terrain and in bowls.

Snowpack structure

Due to higher temperatures last weekend with some rain impact, as well as the lack of nocturnal radiation, the snowpack is moist-to-instably wet up to high altitudes. As cold air moves in outgoing, the snowpack will regain some of its firmness. At intermediate altitudes (below 1500 m) the slopes are becoming bare of snow, what snow there is, is moist-to-wet.

Weather

On Sunday night, a cold front from the west will move in, bringing lots of clouds and precipitation which will spread over the entire mountain landscape during the course of the day on Monday. Snowfall level at 1800 m. Winds will shift from SW to NW. At midday: -1 degrees at 2000 m; +2 degrees at 1500 m.

Instable weather conditions also on Tuesday. Following a morning which is cloudy but dry, the peaks will disappear in fog, and widespread rainfall or snow showers will set in. Intensifying NW winds. Temperatures will drop.

Outlook

The snowdrift problem is in the foreground, but mainly at high altitudes to start with

Avalanche problems



Danger ratings

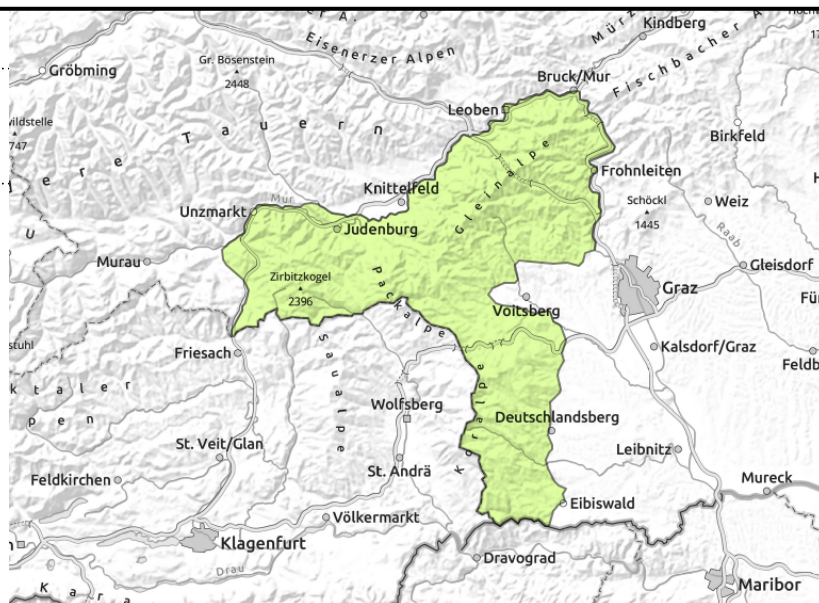
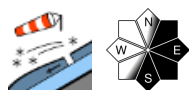


Expositions



Avalanche report for Monday, 24.04.2023

Seetaler Alpen, Stub- und Gleinalpe, Koralpe



Isolated freshly generated snowdrift patches at high altitudes

With dropping temperatures and lack of radiation, the danger of wet-snow avalanches is past. However, as a result of fresh snow and winds shifting to northerly, fresh snowdrift accumulations are being generated at high altitudes, deposited particularly on E/S facing slopes behind abrupt drops in the terrain and in bowls.

Snowpack structure

Due to higher temperatures last weekend with some rain impact, as well as the lack of nocturnal outgoing radiation, the snowpack is moist-to-instably wet up to high altitudes. As cold air moves in, the snowpack will regain some of its firmness. At intermediate altitudes (below 1500 m) the slopes are becoming bare of snow, what snow there is, is moist-to-wet.

Weather

On Sunday night, a cold front from the west will move in, bringing lots of clouds and precipitation which will spread over the entire mountain landscape during the course of the day on Monday. Snowfall level at 1800 m. Winds will shift from SW to NW. At midday: -1 degrees at 2000 m; +2 degrees at 1500 m.

Instable weather conditions also on Tuesday. Following a morning which is cloudy but dry, the peaks will disappear in fog, and widespread rainfall or snow showers will set in. Intensifying NW winds. Temperatures will drop.

Outlook

The snowdrift problem is in the foreground, but mainly at high altitudes.

Translated by Jeffrey McCabe, www.creativtrans.com

Avalanche problems



Danger ratings



Expositions

