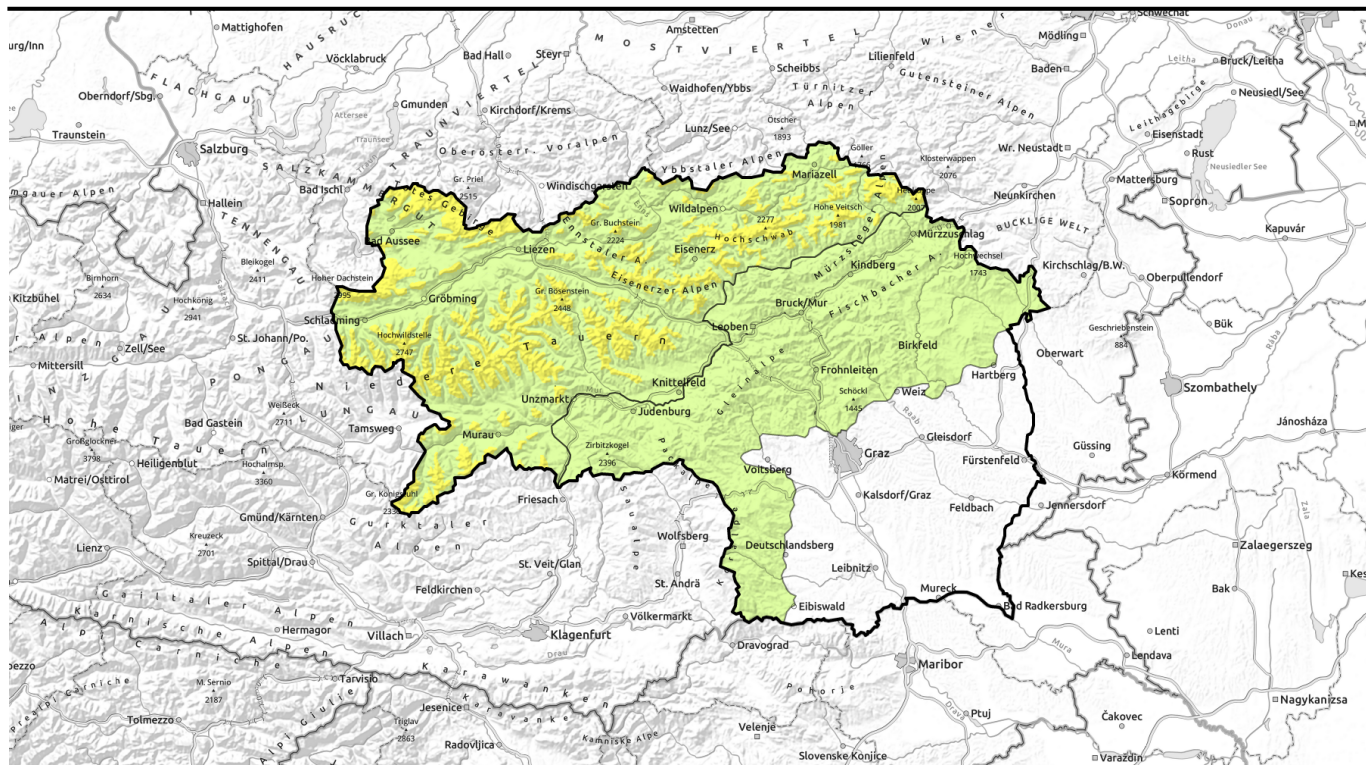


Avalanche report for Saturday, 22.04.2023



Wet loose-snow avalanches due to surging warmth



Mürztaler Alpen, Westliche Fischbacher Alpen und Grazer Bergland, Stub- und Gleinalpe, Koralle, Seetaler Alpen, Östliche Fischbacher Alpen und Wechselgebiet



1500 m

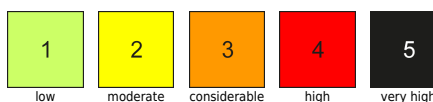
Dachsteingebiet, Totes Gebirge, Hochschwabgebiet, Ennstaler Alpen, Mürzsteger Alpen, Schladminger Tauern Nord, Nördliche Wölzer Tauern, Rottenanner Tauern, Eisenerzer Alpen, Schladminger Tauern Süd, Südliche Wölzer Tauern, Seckauer Tauern, Gurktaler Alpen



Avalanche problems



Danger ratings

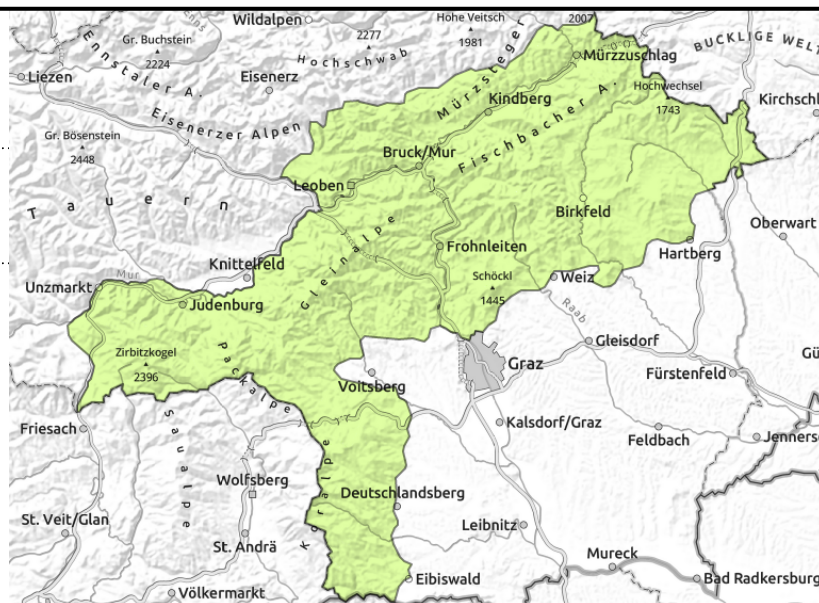


Expositions



Avalanche report for Saturday, 22.04.2023

Mürztaler Alpen, Westliche Fischbacher Alpen und Grazer Bergland, Stub- und Gleinalpe, Korralpe, Seetaler Alpen, Östliche Fischbacher Alpen und Wechselgebiet



strong injection of warmth

Wet-snow problem plus snowdrifts at high altitudes: caution urged

Avalanche danger will be low on Saturday. In steep terrain, wet loose-snow avalanches can trigger, small-to-medium, on steep grassy slopes glide snow slides are still possible.

Snowpack structure

The fresh snow from last week has been able to settle, the most recent snowfall is sticky above 1400 m. As temperatures rise again, together with rain impact, the snowpack forfeits its firmness. Only in very high altitude zones are there still trigger-sensitive snowdrifts.

Weather

Throughout the Eastern Alps, weak high-pressure front conditions prevail on Saturday. On the northern flank of the Alps the weather will be pleasant right from the start, in the Tauern there will be low lying clouds from the south, quickly dispersing. In the Gurktal Alps as far as the rimline ranges, dense convective clouds will form in the afternoon. Winds will be light from S/SE. At 2000 m: +6 degrees; at 1500m: 11 degrees.

But on Sunday the weather will turn instable. Clouds will persist, the northern ranges will soon lie in fog. From Dachstein to Hochschwab, rain showers will begin at midday, during the afternoon rain showers and thunderstorms will throughout the mountains. Winds will shift to northwesterly, temperatures drop. At 2000 m: 2-5 degrees.

Outlook

With the descending temperatures, loose-snow avalanche activity will recede.

Avalanche problems



Danger ratings

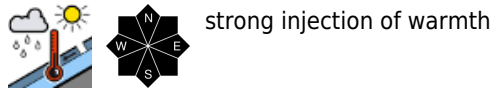


Expositions



Avalanche report for **Saturday, 22.04.2023**

Dachsteingebiet, Totes Gebirge, Hochschwabgebiet, Ennstaler Alpen, Mürzsteger Alpen, Schladminger Tauern Nord, Nördliche Wölzer Tauern, Rottenmanner Tauern, Eisenerzer Alpen, Schladminger Tauern Süd, Südliche Wölzer Tauern, Seckauer Tauern, Gurktaler Alpen



Wet loose-snow avalanches due to surging warmth

On Saturday the main problem will be naturally triggered wet loose-snow avalanches of medium size in all aspects. Danger zones for slab avalanches are limited to high altitudes in the Schladminger Tauern and Dachstein regions where there are still trigger-sensitive snowdrifts, esp. behind abrupt drops in the terrain and in gullies and bowls.

Snowpack structure

Through the higher temperatures the most recent snowfall is being moistened, older drifts are losing their internal tension. Further snow transport, snowdrift generation, is only at high altitudes. At intermediate altitudes the snowpack has lost much stability and are becoming bare.

Weather

Throughout the Eastern Alps, weak high-pressure front conditions prevail on Saturday. On the northern flank of the Alps the weather will be pleasant right from the start, in the Tauern there will be low lying clouds from the south, quickly dispersing. In the Gurktal Alps as far as the rimline ranges, dense convective clouds will form in the afternoon. Winds will be light from S/SE. At 2000 m: +6 degrees; at 1500m: 11 degrees.

But on Sunday the weather will turn instable. Clouds will persist, the northern ranges will soon lie in fog. From Dachstein to Hochschwab, rain showers will begin at midday, during the afternoon rain showers and thunderstorms will throughout the mountains. Winds will shift to northwesterly, temperatures drop. At 2000 m: 2-5 degrees.

Outlook

Receding danger of slab avalanches due to lack of nocturnal outgoing (longwave) radiation. But persistent danger of moist/wet loose-snow avalanches.

Translated by Jeffrey McCabe, www.creativtrans.com

Avalanche problems



Danger ratings



Expositions

