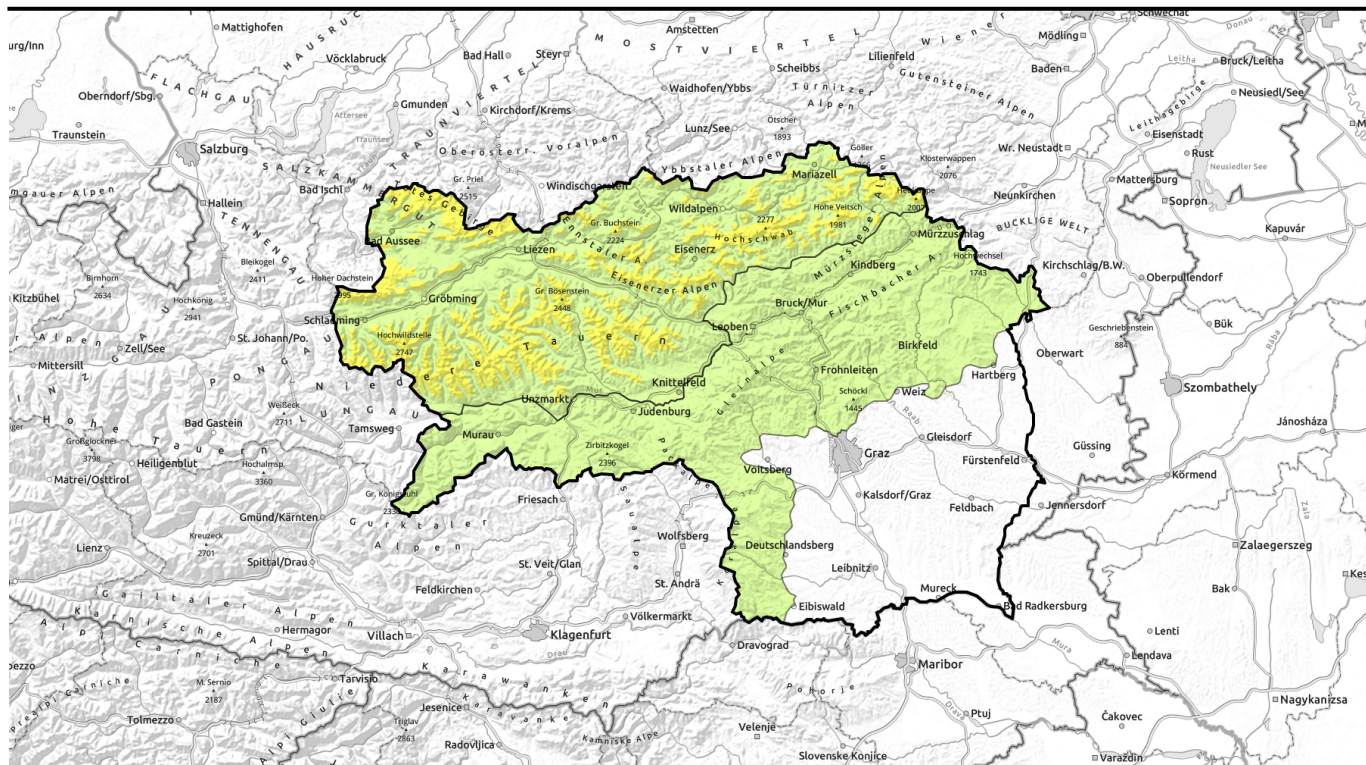

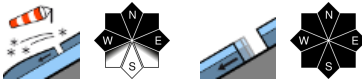

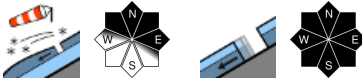


# Avalanche report for Thursday, 20.04.2023



## Instable weather conditions, fresh snowdrifts on north-facing high alpine slopes due to southerly foehn wind

	<p>Mürztaler Alpen, Westliche Fischbacher Alpen und Grazer Bergland, Stub- und Gleinalpe, Koralpe, Seetaler Alpen, Gurktaler Alpen, Östliche Fischbacher Alpen und Wechselgebiet</p>	
	<p>1800 m Dachsteingebiet, Totes Gebirge, Hochschwabgebiet, Ennstaler Alpen, Mürzsteiger Alpen, Schladminger Tauern Nord, Nördliche Wölzer Tauern, Rottenmanner Tauern, Eisenerzer Alpen, Schladminger Tauern Süd, Südliche Wölzer Tauern, Seckauer Tauern</p>	

### Avalanche problems



### Danger ratings



### Expositions



# Avalanche report for Thursday, 20.04.2023

Mürztaler Alpen, Westliche Fischbacher Alpen und Grazer Bergland, Stub- und Gleinalpe, Koralpe, Seetaler Alpen, Gurktaler Alpen, Östliche Fischbacher Alpen und Wechselgebiet



behind abrupt drops in the terrain, in gullies, steep bowls



in extremely steep grass-covered terrain

## Isolated trigger-sensitive snowdrift accumulations at high altitudes

Avalanche danger is low. At high altitudes, freshly generated snowdrift accumulations are sometimes prone to triggering, mostly in extended W/N facing slopes, behind abrupt drops in the terrain and in steep entries. In addition, glide-snow slides can trigger naturally on steep grass-covered slopes. Cornices are not stable.

### Snowpack structure

The fresh snow from last week has been able to settle. Due to diffuse radiation and higher temperatures the snowpack is moistening, or becoming thoroughly wet, losing its firmness. The fresh snow is moist and will bond well with the old snowpack. Only at high altitudes are trigger-sensitive snowdrifts being generated.

### Weather

The high/low pressure front on Thursday will deliver unstable weather conditions. In the Northern Alps, intermittent snowfall will taper off in the morning, southerly foehn will then disperse the clouds. From Niedere Tauern over Gurktal and Seetal Alps as far as Koralpe, clouds will accumulate, some rainfall and snowfall are possible, snowfall level will rise to 1500 m during the daytime. Winds will be moderate from S/SE. At 2000 m: -1 degree; at 1500 m: +4 degrees.

On Friday, these conditions will continue amid slightly rising temperatures.

### Outlook

Still little change in avalanche danger levels

#### Avalanche problems



#### Danger ratings

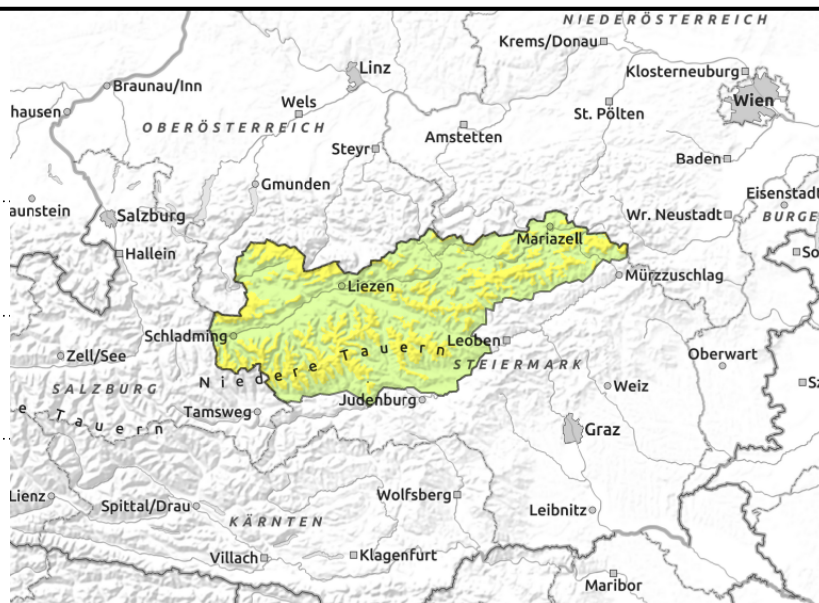
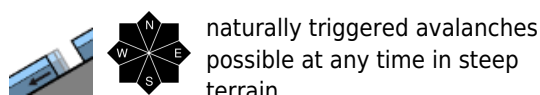
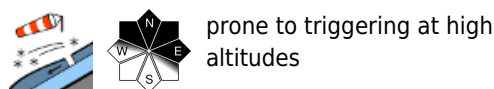


#### Expositions



# Avalanche report for Thursday, 20.04.2023

Dachsteingebiet, Totes Gebirge, Hochschwabgebiet, Ennstaler Alpen, Mürzsteger Alpen, Schladminger Tauern Nord, Nördliche Wölzer Tauern, Rottenmanner Tauern, Eisenerzer Alpen, Schladminger Tauern Süd, Südliche Wölzer Tauern, Seckauer Tauern



## Snowdrift accumulations at high altitudes and wet-snow problem: Caution!

Along the northern flank of the Tauern and in the Northern Alps a snowdrift problem will be generated by the rising southerly foehn wind, danger zones will increase with ascending altitude. Particularly the NW/E facing slopes are struck. Attention is focused on trigger-sensitive snowdrifts behind abrupt drops in the terrain and in gullies and bowls. On steep grassy slopes where snow is sufficient, naturally triggered glide-snow slides can be expected.

### Snowpack structure

Due to dropping temperatures the snowpack was able to regain some firmness (after moistening from recent rainfall). The melt-freeze encrusted surface will get a shallow layer on top of it which moderate winds will use to generate fresh snowdrift accumulations. At intermediate and lower altitudes the snow fell on bare ground.

### Weather

The high/low pressure front on Thursday will deliver unstable weather conditions. In the Northern Alps, intermittent snowfall will taper off in the morning, southerly foehn will then disperse the clouds. From Niedere Tauern over Gurktal and Seetal Alps as far as Koralpe, clouds will accumulate, some rainfall and snowfall are possible, snowfall level will rise to 1500 m during the daytime. Winds will be moderate from S/SE. At 2000 m: -1 degree; at 1500 m: +4 degrees. On Friday, these conditions will continue amid slightly rising temperatures.

### Outlook

Still little change in avalanche danger levels

Translated by Jeffrey McCabe, [www.creativtrans.com](http://www.creativtrans.com)

#### Avalanche problems



#### Danger ratings



#### Expositions

