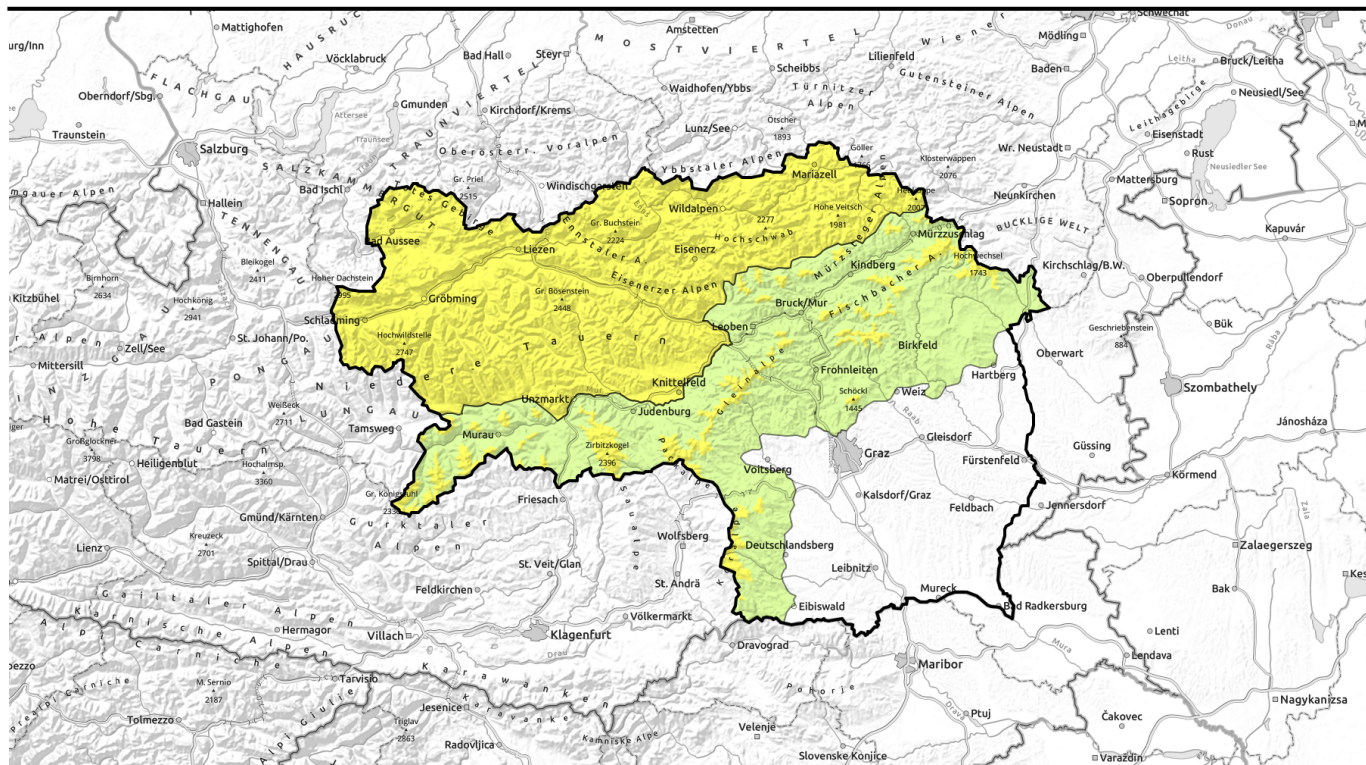

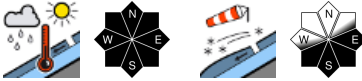




Avalanche report for **Wednesday, 19.04.2023**



Instable weather conditions, cooler, some precipitation

	<p>1500 m</p>	<p>Östliche Fischbacher Alpen und Wechselgebiet, Mürtzaler Alpen, Westliche Fischbacher Alpen und Grazer Bergland, Stub- und Gleinalpe, Korralpe, Seetaler Alpen, Gurktaler Alpen</p>	
	<p>Dachsteingebiet, Totes Gebirge, Hochschwabgebiet, Ennstaler Alpen, Mürtzsteger Alpen, Schladminger Tauern Nord, Nördliche Wölzer Tauern, Rottenanner Tauern, Eisenerzer Alpen, Schladminger Tauern Süd, Südliche Wölzer Tauern, Seckauer Tauern</p>		

Avalanche problems



Danger ratings

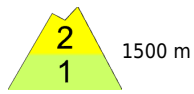


Expositions



Avalanche report for Wednesday, 19.04.2023

Östliche Fischbacher Alpen und Wechselgebiet, Mürztaler Alpen, Westliche Fischbacher Alpen und Grazer Bergland, Stub- und Gleinalpe, Koralpe, Seetaler Alpen, Gurktaler Alpen



possible at any time in steep terrain



fresh snowdrift patches at high altitudes



Wet-snow problem in forefront. Isolated trigger-sensitive snowdrifts at high altitude.

Avalanche danger above 1500m is moderate, below that altitude danger is low. Fresh snow from last week has further settled. Main danger: naturally triggered moist-to-wet avalanches in all aspects. Freshly generated snowdrift accumulations are prone to triggering at high altitudes, can be triggered in extended E/S facing terrain, behind abrupt drops in the terrain, by winter sports enthusiasts. On steep grassy slopes, glide-snow slides can trigger naturally. Cornices are not stable.

Snowpack structure

The fresh snow has been able to settle. Due to diffuse radiation and higher temperatures the snowpack is moistening, or becoming thoroughly wet, losing its firmness. On steep grassy and forested slopes the snowpack can glide away. Fresh snowdrifts are trigger-sensitive only at high altitude; moreover, there are weak layers inside the snowpack near the border of fresh-to-old snow.

Weather

A high/low pressure front on Wednesday, together with a northerly air current will deliver colder moister air masses our way, thereby guaranteeing that instable conditions will continue. Heavy clouds and fog will reduce visibility. Around midday a cold front will reach the northern flank of the Alps from the northeast, bringing snowfall and lower temperatures (snowfall level dropping to 900m). Also on the southern flank of the Alps, some rain and snow showers - or graupel. Winds will be NW, moderate to brisk. At 2000 m: descending from -2 to -4 degrees; at 1500 m to just below zero.

Outlook

On Thursday, cloud and fog will dominate in Niedere Tauern, Gurktal, Seetal Alps and Koralpe. Rising snowfall level in the morning, some precipitation. In the Northern Alps and the eastern rim ranges of the Alps, SE winds will disperse the clouds somewhat. As winds shift, fresh snowdrifts will accumulate in NW aspects. The wet-snow problem will persist.

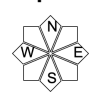
Avalanche problems



Danger ratings

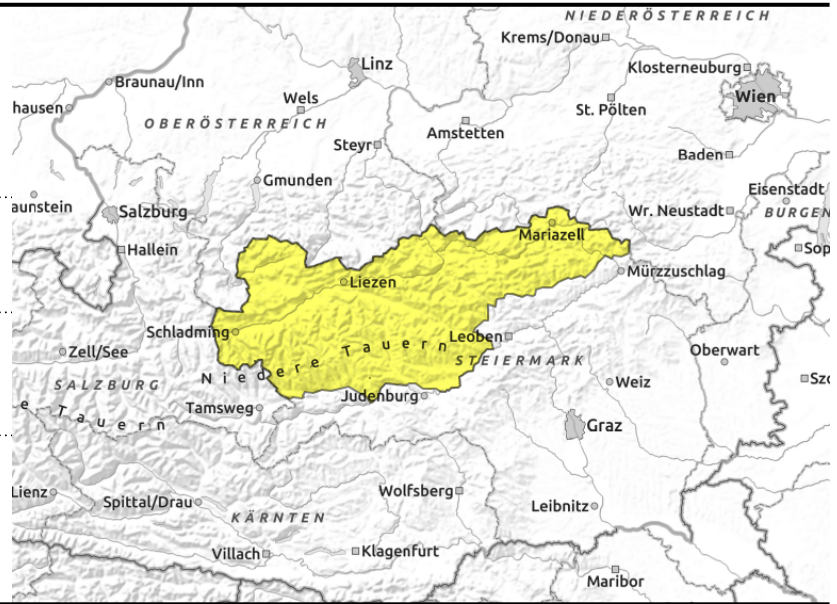


Expositions



Avalanche report for **Wednesday, 19.04.2023**

Dachsteingebiet, Totes Gebirge, Hochschwabgebiet, Ennstaler Alpen, Mürzsteger Alpen, Schladminger Tauern Nord, Nördliche Wölzer Tauern, Rottenmanner Tauern, Eisenerzer Alpen, Schladminger Tauern Süd, Südliche Wölzer Tauern, Seckauer Tauern



prone to triggering at high altitudes



naturally triggered avalanches possible at any time in steep terrain

Snowdrift accumulations at high altitudes and wet-snow problem: **Caution!**

Avalanche danger is moderate. At high altitudes the fresh snowdrifts can still be triggered by one sole skier, particularly on extended E/S facing slopes, behind abrupt drops in the terrain and in wind-loaded gullies. Due to higher temperatures, (diffuse) radiation and even some rainfall, small-to-medium sized naturally triggered avalanches are possible up to high altitudes. In addition, on steep grassy slopes, glide-snow slides can release naturally. Fresh, often large cornices are instable. Poor visibility makes assessment on-site difficult. Cornices are not stable.

Snowpack structure

The fresh snow has been able to settle. Due to diffuse radiation and higher temperatures the snowpack is moistening, or becoming thoroughly wet, losing its firmness. On steep grassy and forested slopes the snowpack can glide away. Fresh snowdrifts are trigger-sensitive only at high altitude; moreover, there are weak layers inside the snowpack near the border of fresh-to-old snow.

Weather

A high/low pressure front on Wednesday, together with a northerly air current will deliver colder moister air masses our way, thereby guaranteeing that instable conditions will continue. Heavy clouds and fog will reduce visibility. Around midday a cold front will reach the northern flank of the Alps from the northeast, bringing snowfall and lower temperatures (snowfall level dropping to 900m). Also on the southern flank of the Alps, some rain and snow showers - or graupel. Winds will be NW, moderate to brisk. At 2000 m: descending from -2 to -4 degrees; at 1500 m to just below zero.

Outlook

On Thursday, cloud and fog will dominate in Niedere Tauern, Gurktal, Seetal Alps and Koralpe. Rising snowfall level in the morning, some precipitation. In the Northern Alps and the eastern rim ranges of the Alps, SE winds will disperse the clouds somewhat. As winds shift, fresh snowdrifts will accumulate in NW aspects. The wet-snow problem will persist.

Translated by Jeffrey McCabe, www.creativtrans.com

Avalanche problems



Danger ratings



Expositions

