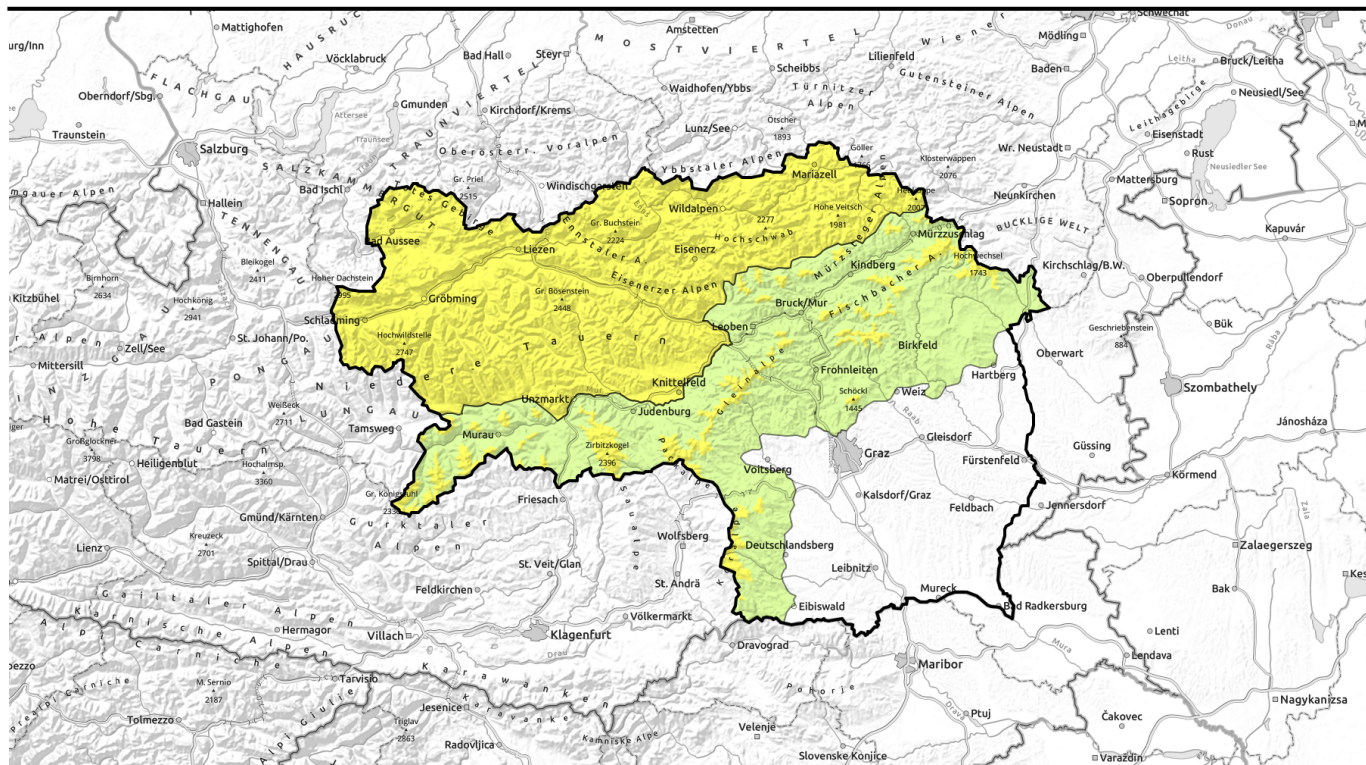
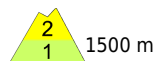


Avalanche report for Tuesday, 18.04.2023

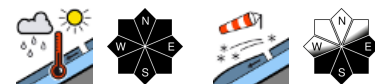


Instable weather conditions continue. Wet-snow problem. Heed high-altitude snowdrifts.



1500 m

Östliche Fischbacher Alpen und Wechselgebiet, Mürztaler Alpen, Westliche Fischbacher Alpen und Grazer Bergland, Stub- und Gleinalpe, Korralpe, Seetaler Alpen, Gurktaler Alpen



Dachsteingebiet, Totes Gebirge, Hochschwabgebiet, Ennstaler Alpen, Mürzteger Alpen, Schladminger Tauern Nord, Nördliche Wölzer Tauern, Rottenmanner Tauern, Eisenerzer Alpen, Schladminger Tauern Süd, Südliche Wölzer Tauern, Seckauer Tauern



Avalanche problems



Danger ratings



Expositions



Avalanche report for Tuesday, 18.04.2023

Östliche Fischbacher Alpen und Wechselgebiet, Mürztaler Alpen, Westliche Fischbacher Alpen und Grazer Bergland, Stub- und Gleinalpe, Korralpe, Seetaler Alpen, Gurktaler Alpen



possible at any time in steep terrain



fresh snowdrift patches at high altitudes



Wet-snow problem in forefront. Isolated trigger-sensitive snowdrifts at high altitude.

Avalanche danger above 1500m is moderate, below that altitude danger is low. Fresh snow from last week has further settled. Main danger: naturally triggered moist-to-wet avalanches in all aspects. Freshly generated snowdrift accumulations (from NE winds) are prone to triggering at high altitudes, can be triggered in extended E/S facing terrain, behind abrupt drops in the terrain, by winter sports enthusiasts. On steep grassy slopes, glide-snow slides can trigger naturally. Cornices are not stable.

Snowpack structure

The fresh snow has been able to settle. Due to sun, diffuse radiation and higher temperatures the snowpack is moistening, or becoming thoroughly wet, losing its firmness. On steep grassy and forested slopes the snowpack can glide away. Fresh snowdrifts are trigger-sensitive only at high altitude; moreover, there are weak layers inside the snowpack near the border of fresh-to-old snow.

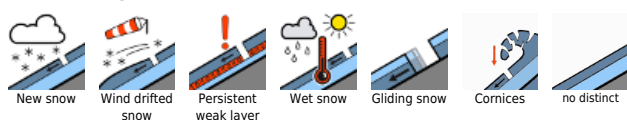
Weather

A NE air current is accumulating moist air masses against the Alps, in the south the conditions are better. Gray and foggy skies in the north can cause light snowfall. Further to the south, isolated showers, but mostly dispersed clouds. On the eastern rim of the Alps, brisk-to-stormy NE winds. At 2000 m: 0 degrees; at 1500 m: between +2 and +4 degrees.

Outlook

On Wednesday the instable weather will persist, gray skies in the north and precipitation especially in the afternoon, the snowfall level will descend somewhat. In the south extended bright intervals. Little change in the avalanche situation.

Avalanche problems



Danger ratings

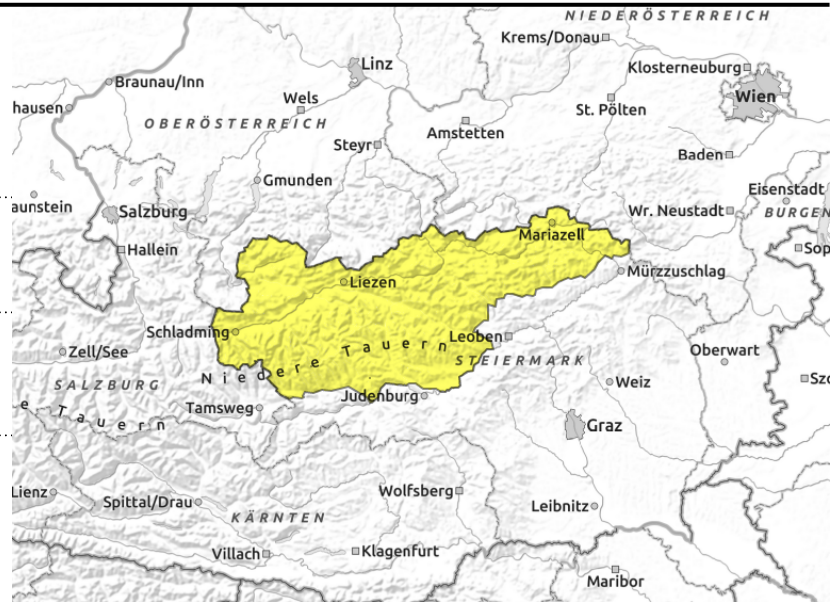


Expositions



Avalanche report for Tuesday, 18.04.2023

Dachsteingebiet, Totes Gebirge, Hochschwabgebiet, Ennstaler Alpen, Mürzsteger Alpen, Schladminger Tauern Nord, Nördliche Wölzer Tauern, Rottenmanner Tauern, Eisenerzer Alpen, Schladminger Tauern Süd, Südliche Wölzer Tauern, Seckauer Tauern



prone to triggering at high altitudes



naturally triggered avalanches possible at any time in steep terrain

Snowdrift accumulations at high altitudes and wet-snow problem: Caution!

Avalanche danger is moderate. At high altitudes the fresh snowdrifts can still be triggered by one sole skier, particularly on extended E/S facing slopes, behind abrupt drops in the terrain and in wind-loaded gullies. Due to higher temperatures, (diffuse) radiation and even some rainfall, small-to-medium sized naturally triggered avalanches are possible up to high altitudes. In addition, on steep grassy slopes, glide-snow slides can release naturally. Fresh, often large cornices are instable. Poor visibility makes assessment on-site difficult. Cornices are not stable.

Snowpack structure

The fresh snow has been able to settle. Due to sun, diffuse radiation and higher temperatures the snowpack is moistening, or becoming thoroughly wet, losing its firmness. On steep grassy and forested slopes the snowpack can glide away. Fresh snowdrifts are trigger-sensitive only at high altitude; moreover, there are weak layers inside the snowpack near the border of fresh-to-old snow.

Weather

A NE air current is accumulating moist air masses against the Alps, in the south the conditions are better. Gray and foggy skies in the north can cause light snowfall. Further to the south, isolated showers, but mostly dispersed clouds. On the eastern rim of the Alps, brisk-to-stormy NE winds. At 2000 m: 0 degrees; at 1500 m: between +2 and +4 degrees.

Outlook

On Wednesday the instable weather will persist, gray skies in the north and precipitation especially in the afternoon, the snowfall level will descend somewhat. In the south extended bright intervals. Little change in the avalanche situation.

Translated by Jeffrey McCabe, www.creativtrans.com

Avalanche problems



New snow Wind drifted snow Persistent weak layer Wet snow Gliding snow Cornices no distinct

Danger ratings



1 low 2 moderate 3 considerable 4 high 5 very high

Expositions

