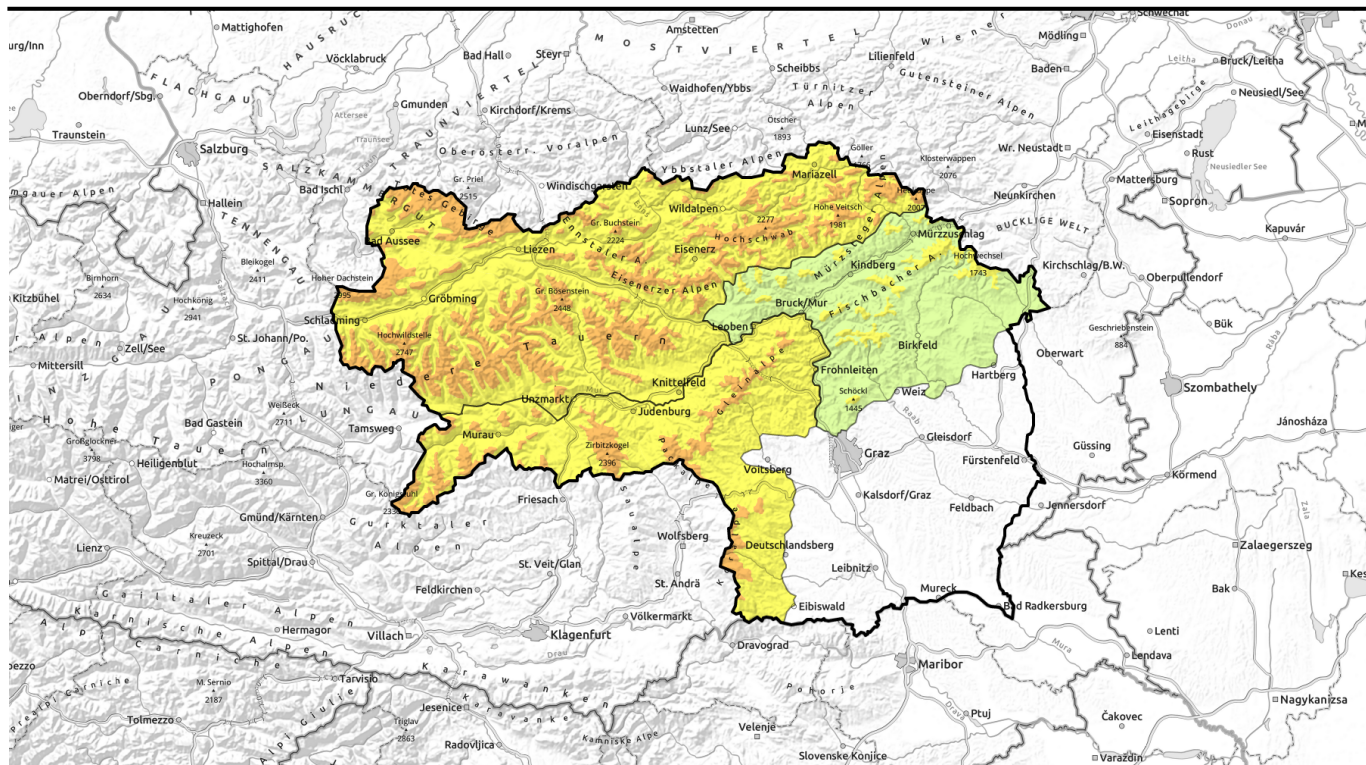


# Avalanche report for Friday, 14.04.2023



## Considerable avalanche danger. Heavy snowfall continues in barrier cloud regions.

	<p>timberline</p>	<p>Totes Gebirge, Dachsteingebiet, Ennstaler Alpen, Rottenmanner Tauern, Nördliche Wölzer Tauern, Schladminger Tauern Nord, Eisenerzer Alpen, Hochschwabgebiet, Mürtzsteiger Alpen, Schladminger Tauern Süd, Südliche Wölzer Tauern, Seckauer Tauern</p>	
	<p>timberline</p>	<p>Stub- und Gleinalpe, Korralpe, Seetaler Alpen, Gurktaler Alpen</p>	
	<p>timberline</p>	<p>Westliche Fischbacher Alpen und Grazer Bergland, Östliche Fischbacher Alpen und Wechselgebiet, Mürtztaler Alpen</p>	

### Avalanche problems



### Danger ratings

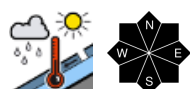
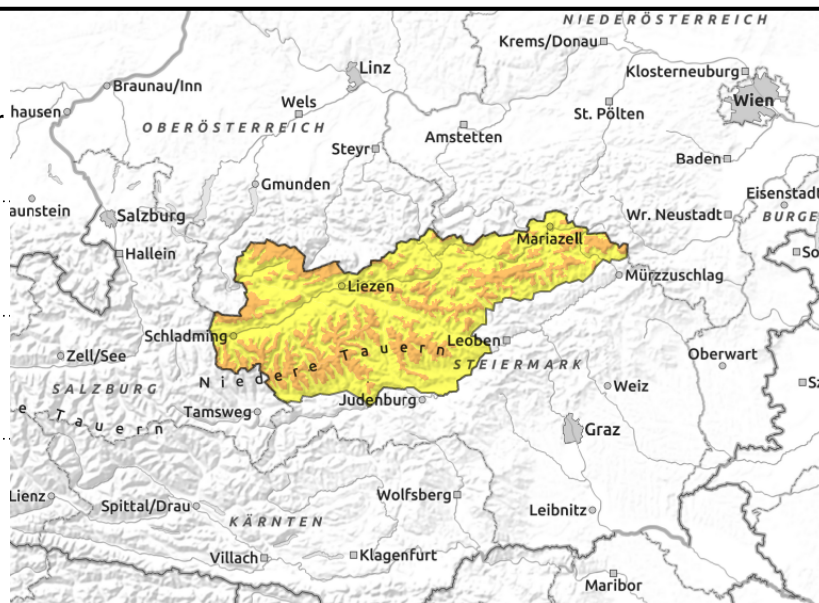


### Expositions



# Avalanche report for Friday, 14.04.2023

**Totes Gebirge, Dachsteingebiet, Ennstaler Alpen, Rottenmann Tauern, Nördliche Wölzer Tauern, Schladminger Tauern Nord, Eisenerzer Alpen, Hochschwabgebiet, Mürzsteiger Alpen, Schladminger Tauern Süd, Südliche Wölzer Tauern, Seckauer Tauern**



## Caution in ridgeline terrain - Fresh snow

Avalanche danger has risen to considerable at high altitudes, where risks of slab avalanches require attentiveness: the weight one single person can trigger one. Danger zones occur mostly on E/S facing slopes. In rocky terrain, increasingly frequent naturally triggered loose-snow avalanches can be expected. At intermediate altitudes and where the slopes previously were bare, the fresh fallen snow can slide away as glide-snow avalanches or wet loose-snow avalanches and place exposed transportation routes at risk. Poor visibility makes assessing the dangers difficult on-site.

## Snowpack structure

Over the last 24 hours there has been 15-35 cm of fresh snow registered, focal point was the Dachstein and Hochschwab regions. In the Niedere Tauern there was less. The fresh snow fell also on bare ground, atop a wet old snowpack surface and on melt-freeze crusts. The fundament is stable. Bonding of fresh snow and drifts to the old snowpack is not adequate.

## Weather

On Friday the summits will still be shrouded in heavy cloud, visibility much reduced. The northerly air current will accumulate clouds along the Main Alpine Ridge, persistent and heavy snowfall can be expected. Much more than 50 cm of fresh snow is anticipated, snowfall level at 700 m. Also brisk winds which will transport the fresh fallen snow. Further south, only intermittent snowfall, far less is expected. At 2000 m: -5 degrees at midday.

## Outlook

On Saturday, heavy cloud, occasional light snowfall, particularly during the afternoon. Snowfall level 1000-1600 m. Winds will be westerly, blowing at moderate strength.

Considerable danger will persist. At intermediate altitudes the danger of wet-snow avalanches will increase.

### Avalanche problems



### Danger ratings

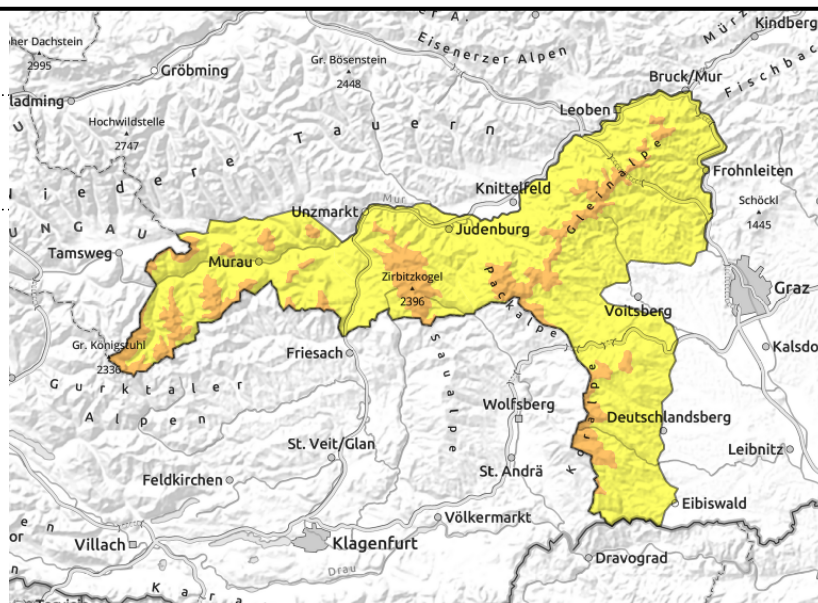


### Expositions



# Avalanche report for Friday, 14.04.2023

Stub- und Gleinalpe, Koralpe, Seetaler Alpen, Gurktaler Alpen



## Fresh snow. Fresh snowdrifts.

Avalanche danger is considerable above the treeline. Naturally triggered wet avalanches are possible as a result of the fresh snowfall. In backcountry touring terrain the danger zones lie in ridgeline terrain and behind abrupt drops in the terrain. South-facing slopes are especially threatened: slabs can be triggered by one sole skier in high altitude terrain.

## Snowpack structure

Over the last 24 hours there has been 30 cm of fresh snow registered, focal point was the Turracher Höhe. The fresh snow fell on bare ground, atop a wet old snowpack surface and on melt-freeze crusts. The fundament is stable. Bonding of fresh snow and drifts to the old snowpack is not adequate. Bare, wet ground is being covered with fresh snow.

## Weather

On Friday the summits will still be shrouded in heavy cloud, visibility much reduced. The northerly air current will accumulate clouds along the Main Alpine Ridge, persistent and heavy snowfall can be expected. Up to 30 cm of fresh snow is anticipated between Turracher Höhe and Koralpe. Also brisk winds which will transport the fresh fallen snow. During the daytime only intermittent snowfall, far less is expected. At 2000 m: -5 degrees at midday.

## Outlook

On Saturday, heavy cloud, occasional light snowfall, particularly during the afternoon. Snowfall level 1000-1600 m. Winds will be westerly, blowing at moderate strength. Considerable danger will persist. At intermediate altitudes the danger of wet-snow avalanches will increase.

### Avalanche problems



### Danger ratings

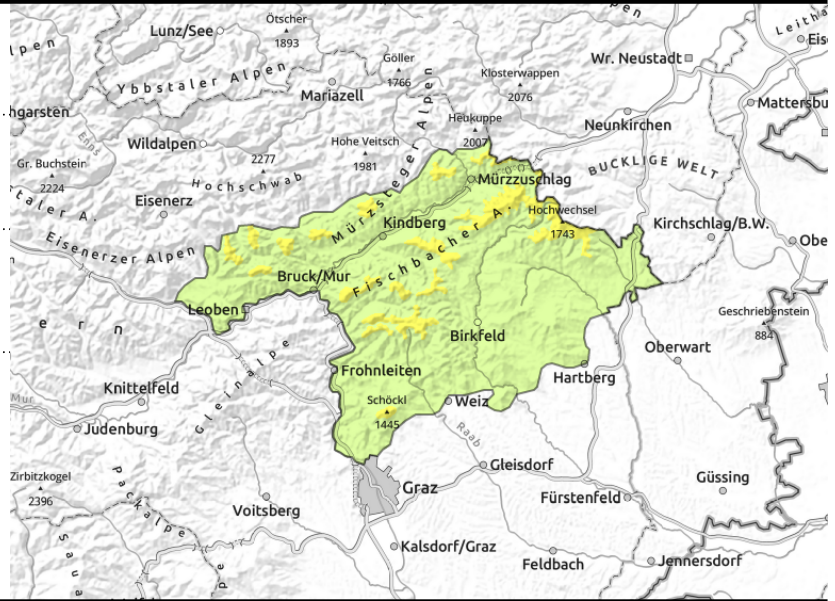
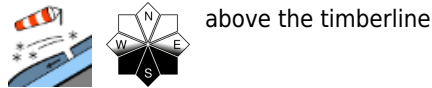


### Expositions



# Avalanche report for Friday, 14.04.2023

Westliche Fischbacher Alpen und Grazer Bergland,  
Östliche Fischbacher Alpen und Wechselgebiet,  
Mürztaler Alpen



## Fresh fallen snow

Avalanche danger is moderate above the treeline. Naturally triggered avalanches are possible on extremely steep slopes due to the fresh snow. In the Wechsel region, fresh snowdrift accumulations will be generated on Thursday night in ridgeline terrain, this is where the danger zones lie. At intermediate altitudes, slides over hills and glide-snow avalanches are possible.

## Snowpack structure

At the start of this period of precipitation there was rainfall up to 1500 m. On Thursday the snowfall level gradually descended. At high altitudes there was 20 cm of fresh snow registered, deposited atop a wet snowpack surface or on a melt-freeze crust. The fundament is stable. Bonding to the snowpack is insufficient. Bare ground is again covered with wet snow.

## Weather

On Friday the summits will still be shrouded in heavy cloud, visibility much reduced. The northerly air current will accumulate clouds along the Main Alpine Ridge, persistent and heavy snowfall can be expected. Up to 30 cm of fresh snow is anticipated in the Wechsel region. Also brisk winds which will transport the fresh fallen snow. Further south, only intermittent snowfall, far less is expected. At 2000 m: -5 degrees at midday.

## Outlook

On Saturday, heavy cloud, occasional light snowfall, particularly during the afternoon. Snowfall level 1000-1600 m. Winds will be westerly, blowing at moderate strength.

Avalanche danger will increase.

Translated by Jeffrey McCabe, [www.creativtrans.com](http://www.creativtrans.com)

### Avalanche problems



### Danger ratings



### Expositions

