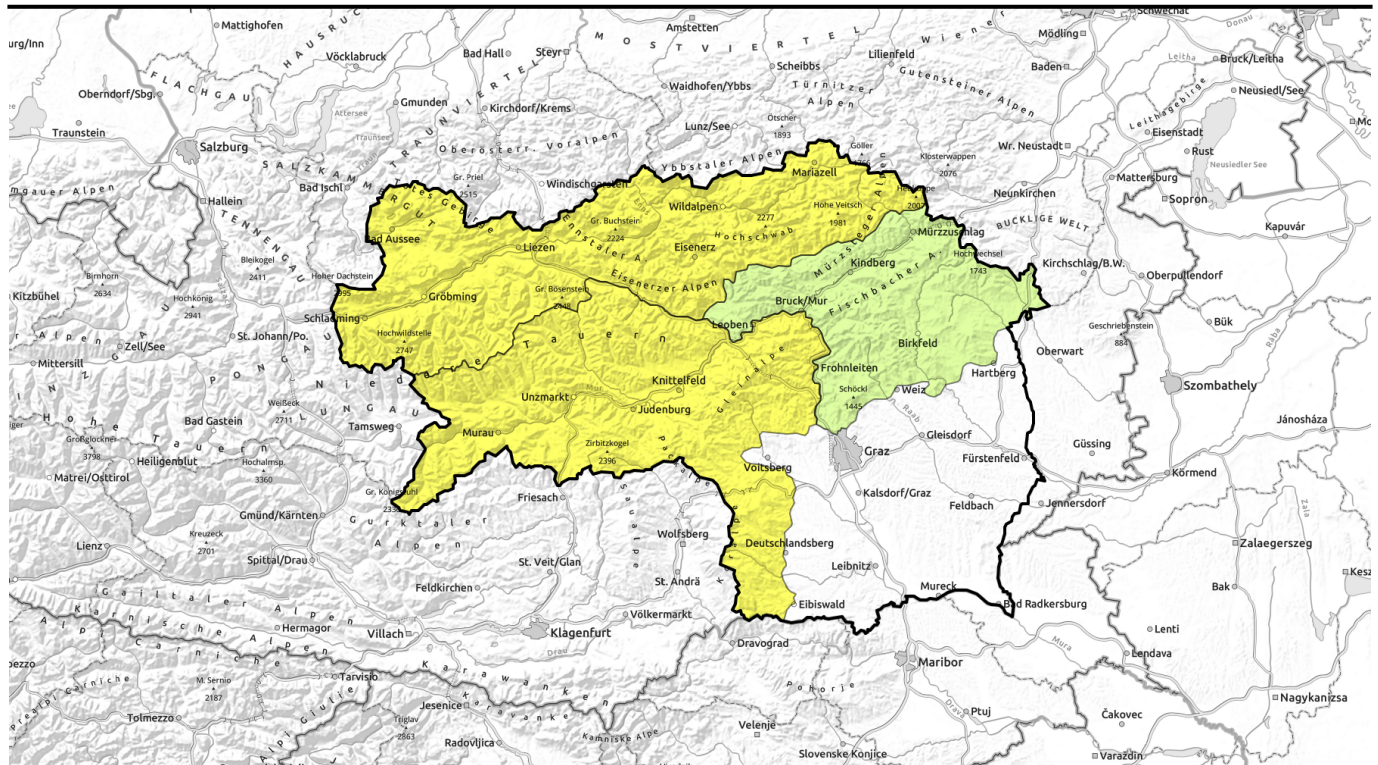








# Avalanche report for Thursday, 13.04.2023



## The return of winter. Avalanche danger levels increasing.

	<p>Totes Gebirge, Dachsteingebiet, Ennstaler Alpen, Rottenmanner Tauern, Nördliche Wölzer Tauern, Schladminger Tauern Nord, Eisenerzer Alpen, Hochschwabgebiet, Mürtzsteger Alpen</p>	
	<p>Stub- und Gleinalpe, Koralpe, Seetaler Alpen, Seckauer Tauern, Gurktaler Alpen, Südliche Wölzer Tauern, Schladminger Tauern Süd</p>	
	<p>Westliche Fischbacher Alpen und Grazer Bergland, Östliche Fischbacher Alpen und Wechselgebiet, Mürtztaler Alpen</p>	

### Avalanche problems



### Danger ratings



### Expositions



# Avalanche report for Thursday, 13.04.2023

Totes Gebirge, Dachsteingebiet, Ennstaler Alpen, Rottenmanner Tauern, Nördliche Wölzer Tauern, Schladminger Tauern Nord, Eisenerzer Alpen, Hochschwabgebiet, Mürzsteiger Alpen



heavy snowfall



## Caution in ridgeline terrain - Fresh snow

Avalanche danger is moderate, at high altitudes large-sized snowdrift accumulations are expected to generate over the course of the day which can be triggered by one sole skier as a slab, particularly on E/S facing slopes. The danger zones are widespread and are not visible to the naked eye due to poor visibility. At intermediate altitudes and where the slopes previously were bare, the fresh fallen snow can slide away as glide-snow avalanches or wet loose-snow avalanches.

## Snowpack structure

Depending on altitude, 25-40 cm of fresh snow is expected, deposited atop a wet snowpack surface or on a melt-freeze crust. The fundament is stable. Bonding to the snowpack is insufficient.

## Weather

On Thursday, winter is returning. Peaks will be shrouded in dense cloud, persistent rainfall and snowfall is expected, the snowfall level will fluctuate around 1000 m. Northerly moderate winds. At 2000 m: -5 degrees.

## Outlook

On Friday, the summits again veiled in dense clouds, visibility much reduced. Northerly air current, clouds will accumulate along the Main Alpine Ridge where there will be persistent and heavy snowfall. Avalanche danger levels will increase.

### Avalanche problems



### Danger ratings



### Expositions

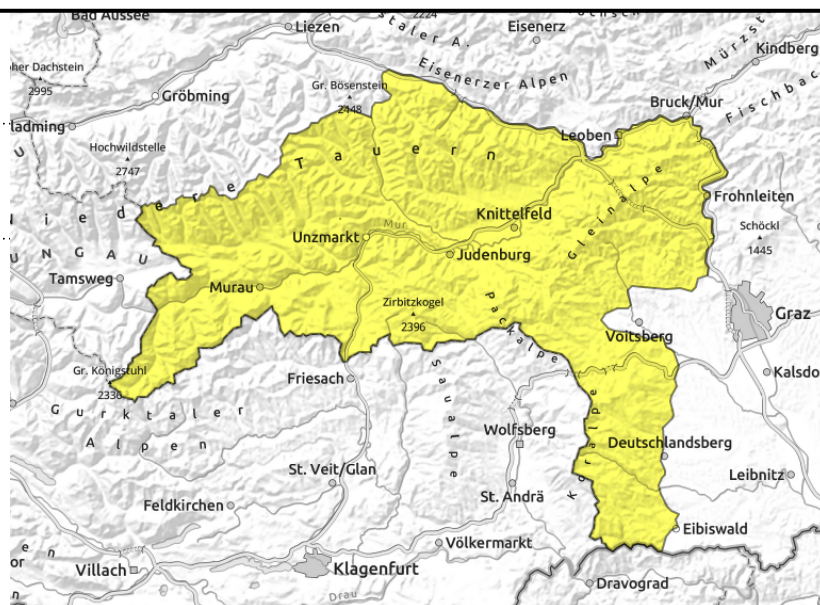


# Avalanche report for Thursday, 13.04.2023

Stub- und Gleinalpe, Koralpe, Seetaler Alpen, Seckauer Tauern, Gurktaler Alpen, Südliche Wölzer Tauern, Schladminger Tauern Süd



thin, small snowdrift accumulations



## Moderate avalanche danger, but caution urged towards wet slides

Avalanche danger is moderate. Naturally triggered wet avalanches are possible as a result of the fresh snowfall. In backcountry touring terrain the danger zones lie in ridgeline terrain and behind abrupt drops in the terrain. South-facing slopes are especially threatened: slabs can be triggered by one sole skier in high altitude terrain.

### Snowpack structure

Depending on altitude, 10-30 cm of fresh snow is expected, deposited atop a wet snowpack surface or on a melt-freeze crust. The fundament is stable. Bonding to the snowpack is insufficient. Bare ground will again be covered with wet snow.

### Weather

On Thursday, winter is returning. Peaks will be shrouded in dense cloud, persistent rainfall and snowfall is expected, the snowfall level will fluctuate around 1000 m. Northerly moderate winds. At 2000 m: -5 degrees.

### Outlook

On Friday, the summits again veiled in dense clouds, visibility much reduced. Northerly air current, clouds will accumulate along the Main Alpine Ridge where there will be persistent and heavy snowfall. Avalanche danger levels will increase.

#### Avalanche problems



#### Danger ratings



#### Expositions



# Avalanche report for Thursday, 13.04.2023

Westliche Fischbacher Alpen und Grazer Bergland,  
Östliche Fischbacher Alpen und Wechselgebiet,  
Mürztaler Alpen



## Fresh fallen snow

Avalanche danger is low. Naturally triggered avalanches are possible on extremely steep slopes due to the fresh snow. In the Wechsel region, fresh snowdrift accumulations will be generated during the daytime, this is where the danger zones lie.

## Snowpack structure

Depending on altitude, 10-30 cm of fresh snow is expected, deposited atop a wet snowpack surface or on a melt-freeze crust. The fundament is stable. Bonding to the snowpack is insufficient. Bare ground will again be covered with wet snow.

## Weather

On Thursday, winter is returning. Peaks will be shrouded in dense cloud, persistent rainfall and snowfall is expected, the snowfall level will fluctuate around 1000 m. Northerly moderate winds. At 2000 m: -5 degrees.

## Outlook

On Friday, the summits again veiled in dense clouds, visibility much reduced. Northerly air current, clouds will accumulate along the Main Alpine Ridge where there will be persistent and heavy snowfall. Avalanche danger levels will increase.

Translated by Jeffrey McCabe, [www.creativtrans.com](http://www.creativtrans.com)

### Avalanche problems



### Danger ratings



### Expositions

