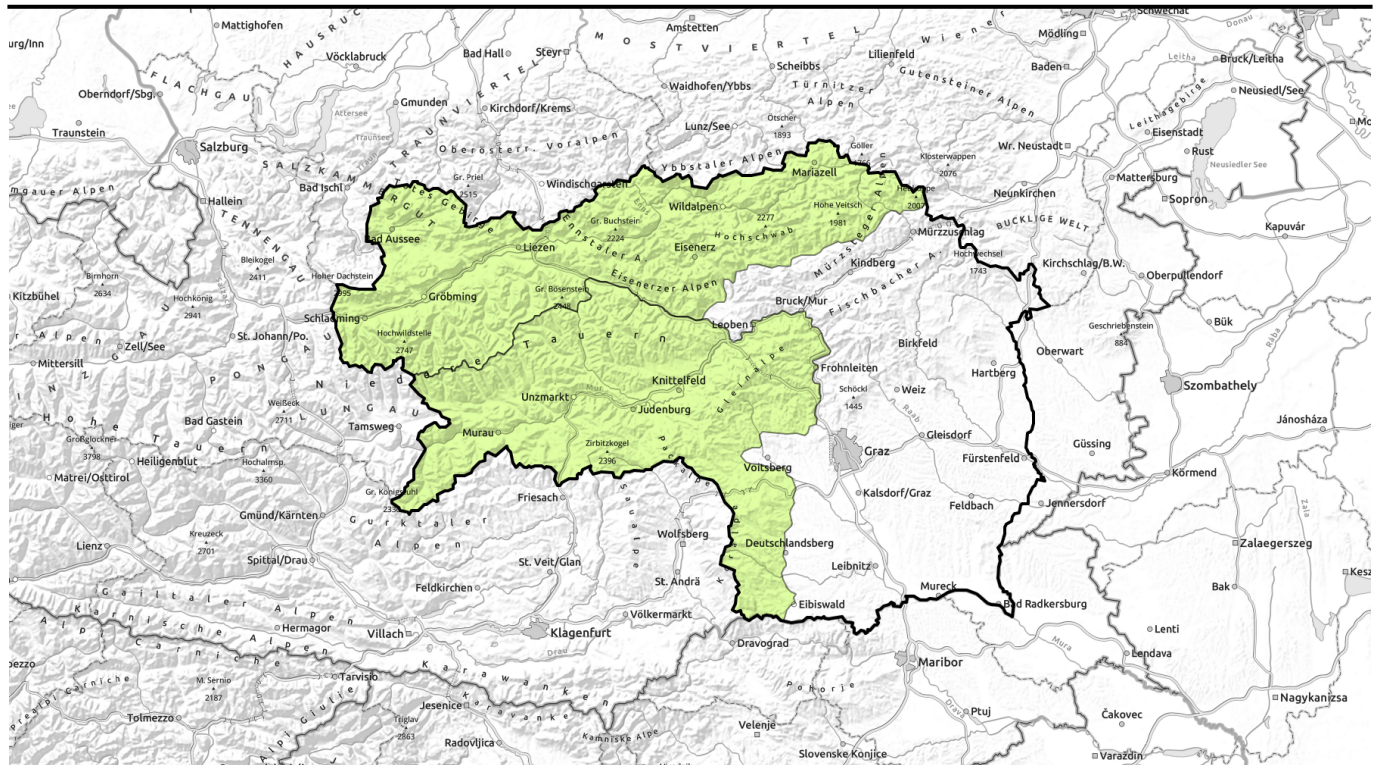


# Avalanche report for Wednesday, 12.04.2023



## Again low avalanche danger



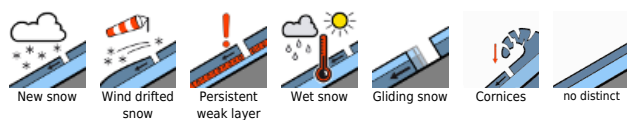
Totes Gebirge, Dachsteingebiet, Ennstaler Alpen, Rottenmanner Tauern, Nördliche Wölzer Tauern, Schladminger Tauern Nord, Eisenerzer Alpen, Hochschwabgebiet, Mürzsteger Alpen



Stub- und Gleinalpe, Koralpe, Seetaler Alpen, Seckauer Tauern, Gurktaler Alpen, Südliche Wölzer Tauern, Schladminger Tauern Süd



### Avalanche problems



### Danger ratings

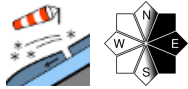


### Expositions



# Avalanche report for **Wednesday, 12.04.2023**

**Totes Gebirge, Dachsteingebiet, Ennstaler Alpen, Rottenmanner Tauern, Nördliche Wölzer Tauern, Schladminger Tauern Nord, Eisenerzer Alpen, Hochschwabgebiet, Mürzsteger Alpen**



## Caution in ridgeline terrain: fresh snowdrifts

Avalanche danger is low. Fresh snowdrift accumulations have been generated on E/S facing slopes at high altitudes which can be triggered, but only small releases are expected. Also in zones which have not yet discharged in extremely steep terrain, naturally triggered avalanches (wet loose-snow releases) are possible.

### Snowpack structure

The snowpack surface is moist up to high altitudes. The fundament is generally stable. During the daytime, further fresh snow and drifts (5-10 cm) will be deposited atop the moist snowpack.

### Weather

On Wednesday, cloudy skies, most peaks shrouded, morning rainfall, a bit of snow above 1400m. In the afternoon, bright intervals, winds shifting to SW and intensifying slightly, brisk in the Hochschwab and Zirbitzkogel regions. At 2000 m: +1 degree.

### Outlook

A cold front will bring cooler air masses and wind. The snowpack level will lie at 1000 m. By next weekend, more fresh snow is expected. Avalanche danger levels will increase.

#### Avalanche problems



#### Danger ratings



#### Expositions

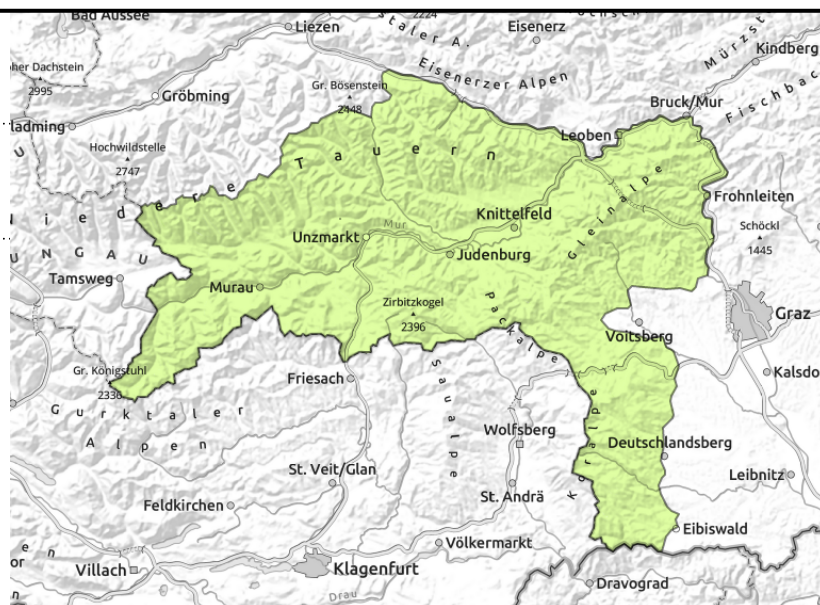


# Avalanche report for Wednesday, 12.04.2023

Stub- und Gleinalpe, Koralpe, Seetaler Alpen, Seckauer Tauern, Gurktaler Alpen, Südliche Wölzer Tauern, Schladminger Tauern Süd



thin, small snowdrift accumulations



## Low avalanche danger, but caution urged towards wet slides

Avalanche danger is low. As a result of higher daytime temperatures, naturally triggered slides can be expected, but releases will be small, the danger of taking a fall outweighs that of being buried in snow. Dry slab avalanches can trigger above 2300 m in isolated cases.

### Snowpack structure

The snowpack is moist up to high altitudes. It is stable.

### Weather

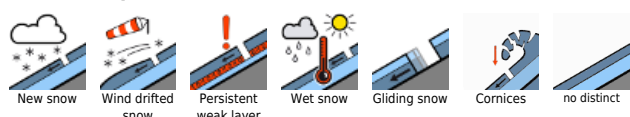
On Wednesday, cloudy skies, most peaks shrouded, morning rainfall, a bit of snow above 1400m. In the afternoon, bright intervals, winds shifting to SW and intensifying slightly, brisk in the Hochschwab and Zirbitzkogel regions. At 2000 m: +1 degree.

### Outlook

A cold front will bring cooler air masses and wind. The snowpack level will lie at 1000 m. By next weekend, more fresh snow is expected. Avalanche danger levels will increase.

Translated by Jeffrey McCabe, [www.creativtrans.com](http://www.creativtrans.com)

#### Avalanche problems



#### Danger ratings



#### Expositions

