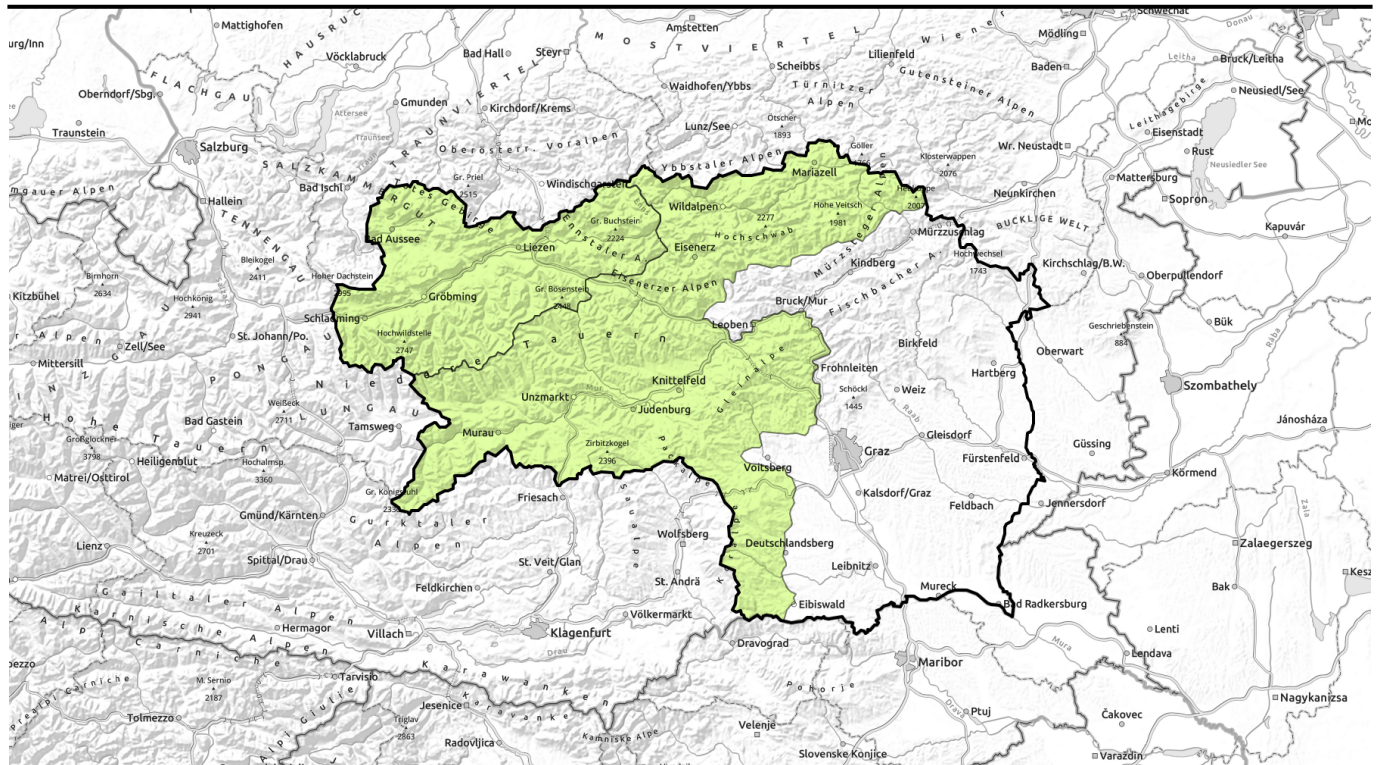






Avalanche report for Tuesday, 11.04.2023





Low avalanche danger

- 

Totes Gebirge, Dachsteingebiet, Ennstaler Alpen, Rottenmanner Tauern, Nördliche Wölzer Tauern, Schladminger Tauern Nord



- 

Stub- und Gleinalpe, Koralpe, Seetaler Alpen, Seckauer Tauern, Gurktaler Alpen, Südliche Wölzer Tauern, Schladminger Tauern Süd, Hochschwabgebiet, Mürzsteger Alpen, Eisenerzer Alpen

Avalanche problems



Danger ratings

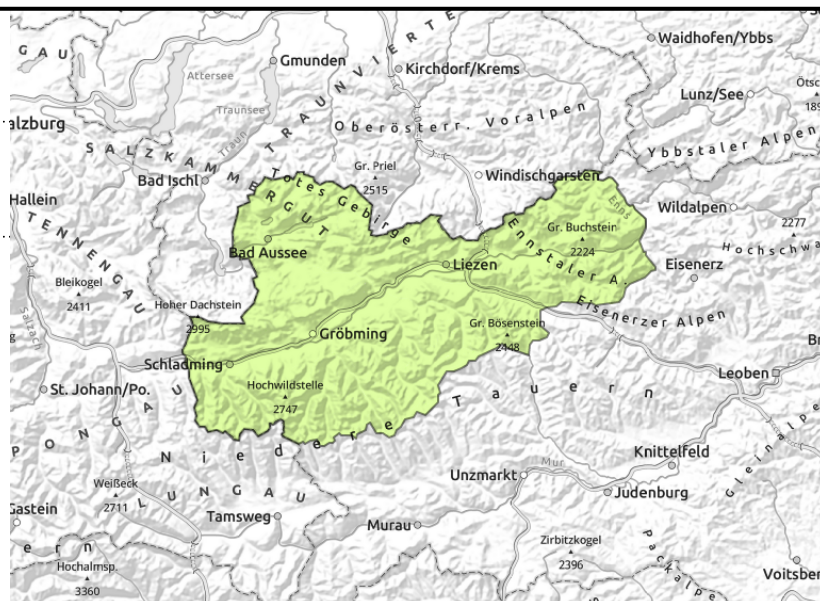
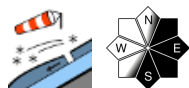


Expositions



Avalanche report for Tuesday, 11.04.2023

Totes Gebirge, Dachsteingebiet, Ennstaler Alpen, Rottenanner Tauern, Nördliche Wölzer Tauern, Schladminger Tauern Nord



Fresh snow and wind at high altitudes

Avalanche danger is low. During the daytime on E/S facing slopes fresh snowdrift accumulations will be generated at high altitudes which can be triggered, but only small releases are expected. Also in zones which have not yet discharged in extremely steep terrain, naturally triggered avalanches (wet loose-snow releases) are possible.

Snowpack structure

The snowpack surface is moist up to high altitudes. The fundament is generally stable. During the daytime, further fresh snow and drifts (5-10 cm) will be deposited atop the moist snowpack.

Weather

On Tuesday morning the next pertubance will arrive. The summit of Northern Alps and Niedere Tauern will disappear in fog, light-to-moderate snowfall will set in (or rain). Winds will shift to NW, temperatures will drop. In the afternoon the snowfall level will descend to 1200-1600m. At 2000 m: 0 degrees.

Outlook

On Wednesday, many peaks will be shrouded in fog, visibility will be reduced, minor precipitation is expected during the morning. In the afternoon skies will brighten. No significant change in avalanche danger levels is expected.

Avalanche problems



Danger ratings



Expositions



Avalanche report for Tuesday, 11.04.2023

Stub- und Gleinalpe, Koralpe, Seetaler Alpen, Seckauer Tauern, Gurktaler Alpen, Südliche Wölzer Tauern, Schladminger Tauern Süd, Hochschwabgebiet, Mürzsteger Alpen, Eisenerzer Alpen



thin, small snowdrift accumulations

Low avalanche danger, but caution urged towards wet slides

Avalanche danger is low. As a result of higher daytime temperatures, naturally triggered slides can be expected, but releases will be small, the danger of taking a fall outweighs that of being buried in snow.

Snowpack structure

The snowpack has settled. It is moist up to high altitudes. In the afternoon some fresh snow will be deposited between Turracher Höhe and Hochschwaben region.

Weather

On Tuesday morning the next pertubance will arrive. The summit of Northern Alps and Niedere Tauern will disappear in fog, light-to-moderate snowfall will set in (or rain). Winds will shift to NW, temperatures will drop. In the afternoon the snowfall level will descend to 1200-1600m. On the southern flank of the Alps very little sunshine but better visibility. Some precipitation in the eastern rimline ranges around midday. At 2000 m: 0 degrees.

Outlook

On Tuesday morning the next pertubance will arrive. The summit of Northern Alps and Niedere Tauern will disappear in fog, light-to-moderate snowfall will set in (or rain). Winds will shift to NW, temperatures will drop. In the afternoon the snowfall level will descend to 1200-1600m. At 2000 m: 0 degrees.

No significant change in avalanche danger levels is expected.

Translated by Jeffrey McCabe, www.creativtrans.com

Avalanche problems



Danger ratings



Expositions

