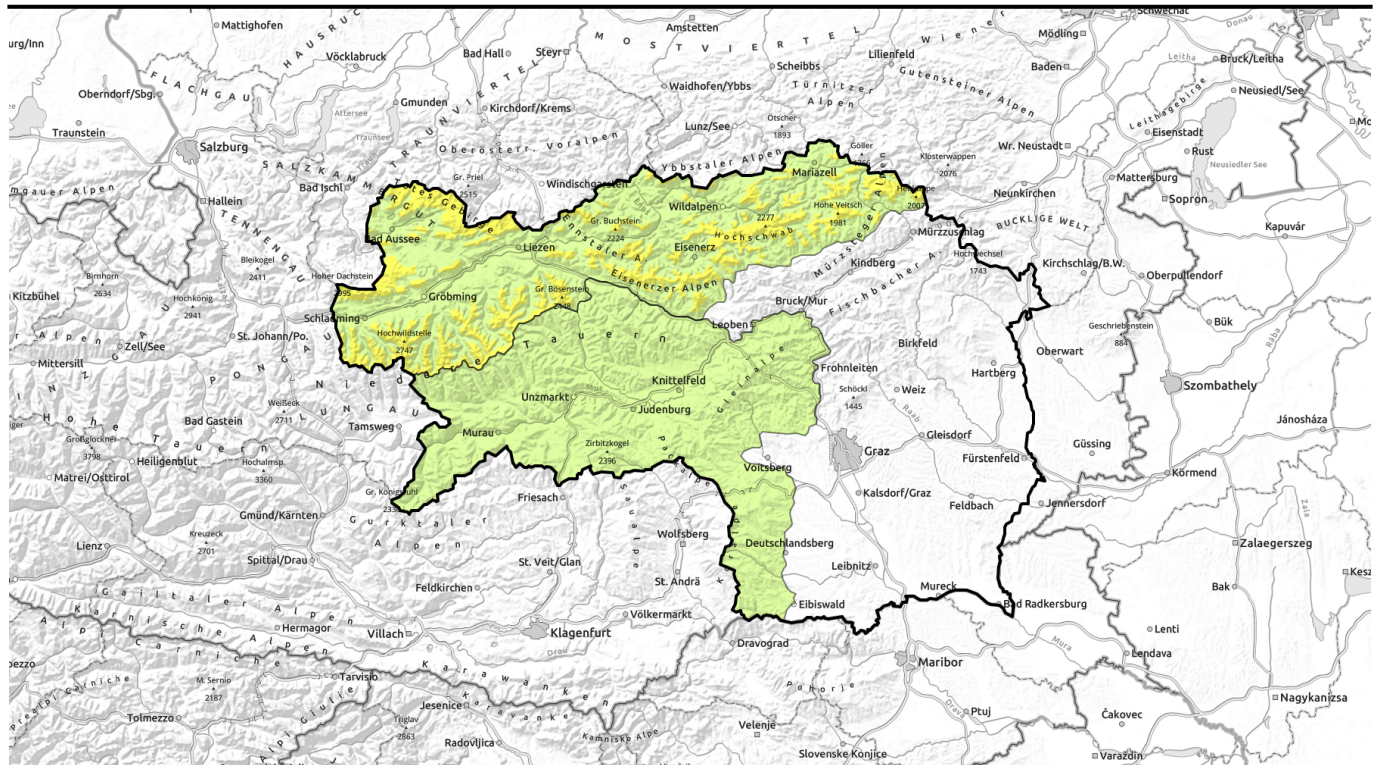




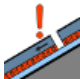






Avalanche report for Sunday, 09.04.2023

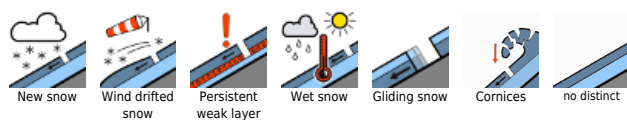


Moderate snowdrift problem /persistent weak layer problem at high altitudes

 2  1	2000 m Totes Gebirge, Dachsteingebiet, Ennstaler Alpen, Rottenmanner Tauern, Nördliche Wölzer Tauern, Schladminger Tauern Nord, Hochschwabgebiet, Eisenerzer Alpen, Mürzsteger Alpen	   
--	---	---

 1	Stub- und Gleinalpe, Koralpe, Seetaler Alpen, Seckauer Tauern, Gurktaler Alpen, Südliche Wölzer Tauern, Schladminger Tauern Süd	 
---	---	---

Avalanche problems



Danger ratings

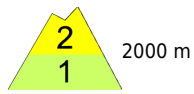


Expositions



Avalanche report for Sunday, 09.04.2023

Totes Gebirge, Dachsteingebiet, Ennstaler Alpen, Rottenmanner Tauern, Nördliche Wölzer Tauern, Schladminger Tauern Nord, Hochschwabgebiet, Eisenerzer Alpen, Mürzsteiger Alpen



2000 m



Moderate snowdrift problem /persistent weak layer problem at high altitudes



above the treeline



Some fresh snow at high altitudes

Avalanche danger above 2000 m is moderate, at lower altitudes danger is low. Main danger stems from fresh and older snowdrifts which are insufficiently bonded with the fundament and where low additional loading by one sole person can trigger a slab avalanche in extremely steep entry zones into gullies and bowls in all aspects., triggerable mostly by large additional loading, sometimes by minimum loading, in isolated cases triggering naturally.

Snowpack structure

Over the last 24 hours there has been 5-10 cm of fresh snow registered. At high altitudes, depending on aspect and landscape, older snowdrift mases or loose snow atop a melt-freeze encrusted snowpack fundament, lie deposited (weak layer: surface hoar and/or loose fresh snow). In between them in many places are weak layers of faceted crystals ("cold on warm"). The snowpack fundament has already been fully moistened up to 2200 m, is currently stable.

Weather

Gray, instable weather conditions will persist on Easter Sunday. Minor snowfall/rainfall showers, clouds will disperse somewhat in the afternoon. Winds will be moderate to brisk from the north. At 2000 m: -5 degrees.

Outlook

Easter Monday will begin in the Northern Aps with clouds and fog. From the west, sunshine will gradually seep through. On the southern flank of the Alps the day will begin with sunshine, in eastern parts some cloud cover will move in during the afternoon. It will be sunniest in the Niedere Tauern and über Turrach as far as the Seetal Alps. It is expected to remain dry. The snowpack is settling. As a result of higher daytime temperatures, small-to-medium sized naturally triggered loose-snow avalanches can be expected.

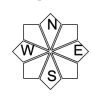
Avalanche problems



Danger ratings



Expositions

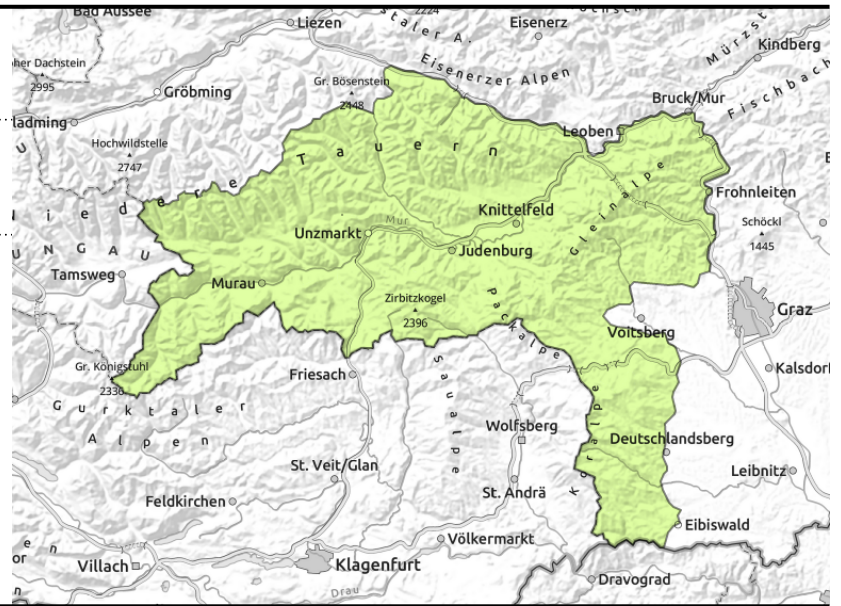


Avalanche report for Sunday, 09.04.2023

Stub- und Gleinalpe, Koralpe, Seetaler Alpen, Seckauer Tauern, Gurktaler Alpen, Südliche Wölzer Tauern, Schladminger Tauern Süd



thin, small snowdrift accumulations



Low avalanche danger, but caution urged towards high-altitude snowdrift patches

Avalanche danger is low. Nevertheless isolated danger zones in the form of freshly generated small snowdrift accumulations occur at high altitudes. Particularly on east and south-facing slopes in extremely steep terrain and entry zones, a slab avalanche cannot be ruled out. Releases will be small, the danger of taking a fall outweighs that of being buried in snow.

Snowpack structure

At high altitudes, depending on aspect and landscape, older snowdrift mases or loose snow atop a melt-freeze encrusted snowpack fundament, lie deposited (weak layer: surface hoar and/or loose fresh snow). The snowpack fundament has already been fully moistened up to 2200 m, is currently stable. East of the Schöckl there is very little snow on the ground.

Weather

Gray, instable weather conditions will persist on Easter Sunday. Minor snowfall/rainfall showers, clouds will disperse somewhat in the afternoon. Winds will be moderate to brisk from the north. At 2000 m: -5 degrees.

Outlook

Easter Monday will begin in the Northern Aps with clouds and fog. From the west, sunshine will gradually seep through. On the southern flank of the Alps the day will begin with sunshine, in eastern parts some cloud cover will move in during the afternoon. It will be sunniest in the Niedere Tauern and über Turrach as far as the Seetal Alps. It is expected to remain dry. Little change in avalanche danger levels is expected.

Translated by Jeffrey McCabe, www.creativtrans.com

Avalanche problems



Danger ratings



Expositions

